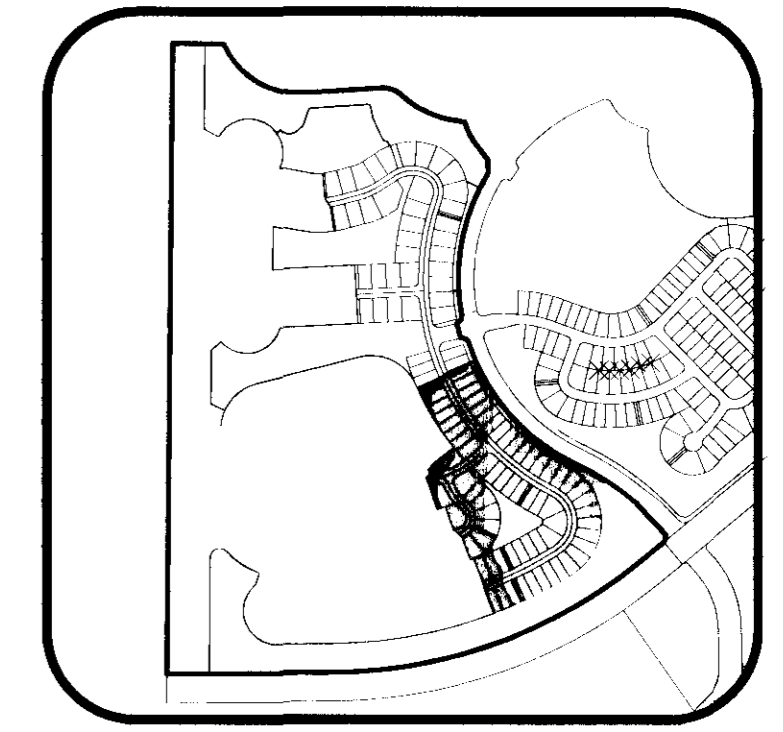


# INDIGO CROSSING - PHASE 1

## VIERA CENTRAL P.U.D. - A PORTION OF PARCEL 4

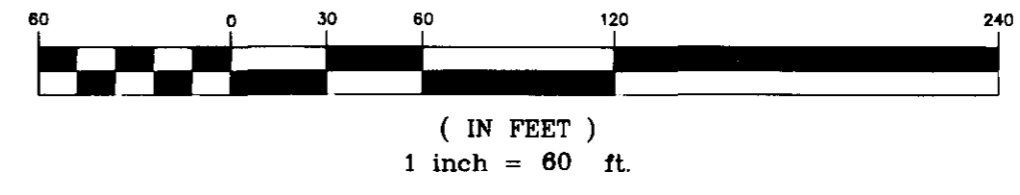
### SECTION 32, TOWNSHIP 25 SOUTH, RANGE 36 EAST

#### VIERA, BREVARD COUNTY, FLORIDA

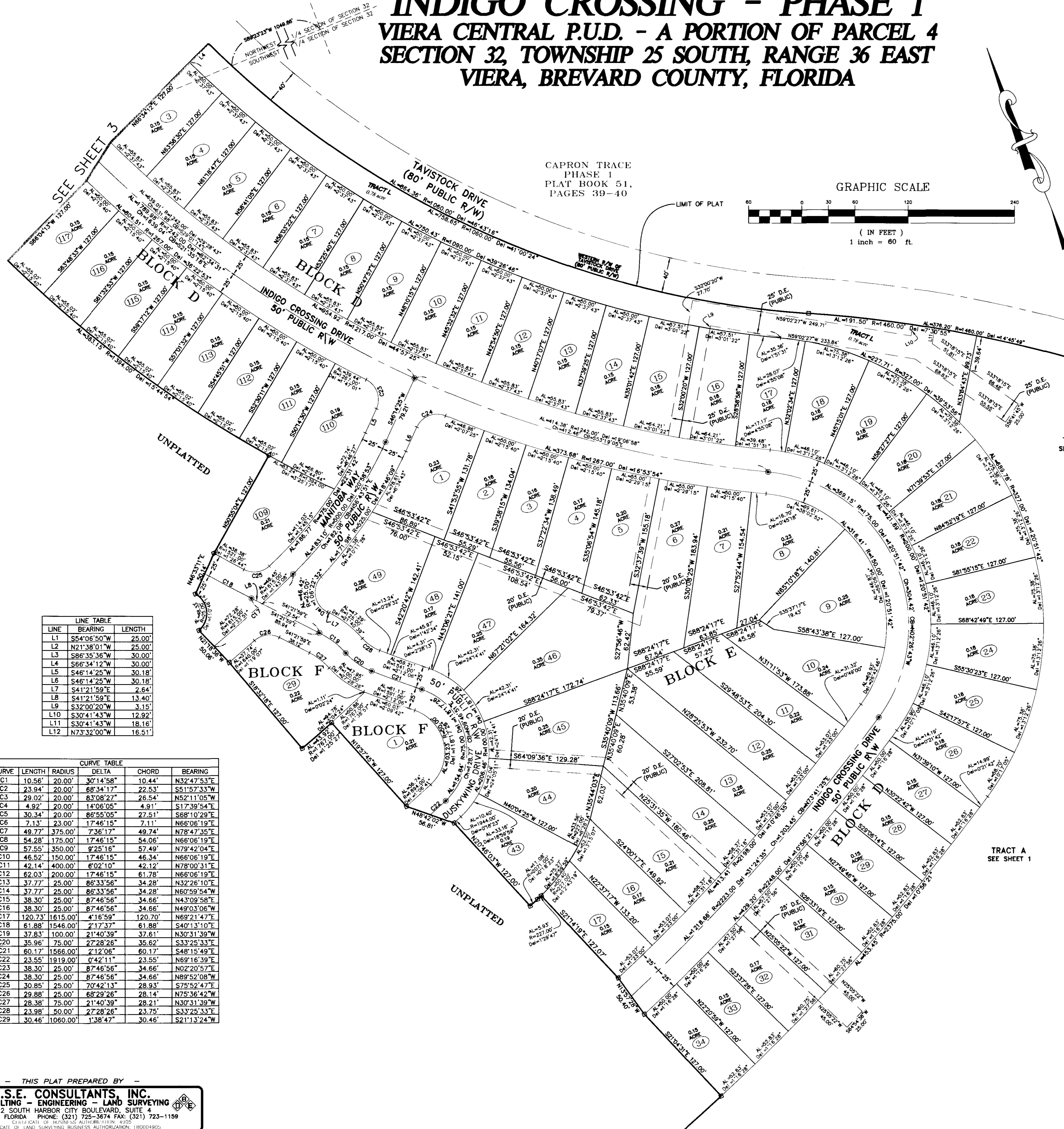


KEY MAP  
 NTS

GRAPHIC SCALE



CAPRON TRACE  
 PHASE 1  
 PLAT BOOK 51,  
 PAGES 39-40



LINE TABLE

LINE	BEARING	LENGTH
L1	S54°06'50"W	25.00'
L2	N21°38'01"W	25.00'
L3	S86°35'36"W	30.00'
L4	S66°34'12"W	30.00'
L5	S46°14'25"W	30.18'
L6	S46°14'25"W	30.18'
L7	S41°21'59"E	2.64'
L8	S41°21'59"E	13.40'
L9	S32°00'20"W	3.15'
L10	S30°41'43"W	12.92'
L11	S30°41'43"W	18.16'
L12	N73°32'00"W	16.51'

CURVE TABLE

CURVE	LENGTH	RADIUS	DELTA	CHORD	BEARING
C1	10.56'	20.00'	30°14'58"	10.44'	N32°47'53"E
C2	23.94'	20.00'	68°34'17"	22.53'	S51°57'33"W
C3	29.02'	20.00'	83°08'27"	26.54'	N52°11'09"W
C4	4.92'	20.00'	14°06'05"	4.91'	S17°39'54"E
C5	30.34'	20.00'	86°55'05"	27.51'	S68°10'29"E
C6	7.13'	23.00'	17°46'15"	7.11'	N66°06'19"E
C7	49.77'	375.00'	7°36'17"	49.74'	N78°47'35"E
C8	54.28'	175.00'	17°46'15"	54.06'	N66°06'19"E
C9	57.55'	350.00'	9°25'16"	57.49'	N79°42'04"E
C10	46.52'	150.00'	17°46'15"	46.34'	N66°06'19"E
C11	42.14'	400.00'	6°02'10"	42.12'	N78°00'31"E
C12	62.03'	200.00'	17°46'15"	61.78'	N66°06'19"E
C13	37.77'	25.00'	86°33'56"	34.28'	N32°26'10"E
C14	37.77'	25.00'	86°33'56"	34.28'	N60°59'54"W
C15	38.30'	25.00'	87°46'56"	34.66'	N43°09'58"E
C16	38.30'	25.00'	87°46'56"	34.66'	N49°03'06"W
C17	120.73'	1615.00'	4°16'59"	120.70'	N69°21'47"E
C18	61.88'	1546.00'	2°17'37"	61.88'	S40°13'10"E
C19	37.83'	100.00'	21°40'39"	37.61'	N30°31'39"W
C20	35.96'	75.00'	27°28'26"	35.62'	S33°25'33"E
C21	60.17'	1566.00'	2°12'06"	60.17'	S48°15'49"E
C22	23.55'	1919.00'	0°42'11"	23.55'	N69°16'39"E
C23	38.30'	25.00'	87°46'56"	34.66'	N02°20'57"E
C24	38.30'	25.00'	87°46'56"	34.66'	N89°52'08"W
C25	30.85'	25.00'	70°42'13"	28.93'	S75°52'47"E
C26	29.88'	25.00'	68°29'26"	28.14'	N75°36'42"W
C27	28.38'	75.00'	21°40'39"	28.21'	N30°31'39"W
C28	23.98'	50.00'	27°28'26"	23.75'	S33°25'33"E
C29	30.46'	1060.00'	1°38'47"	30.46'	S21°13'24"W

THIS PLAT PREPARED BY

**B.S.E. CONSULTANTS, INC.**  
 CONSULTING - ENGINEERING - LAND SURVEYING  
 312 SOUTH HARBOR CITY BOULEVARD, SUITE 4  
 MELBOURNE, FLORIDA PHONE: (321) 725-3874 FAX: (321) 723-1159  
MEMBER OF BUSINESS AUTHORITY AIN 4102  
 CERTIFICATE OF LAND SURVEYING BUSINESS AUTHORIZATION: 110014905