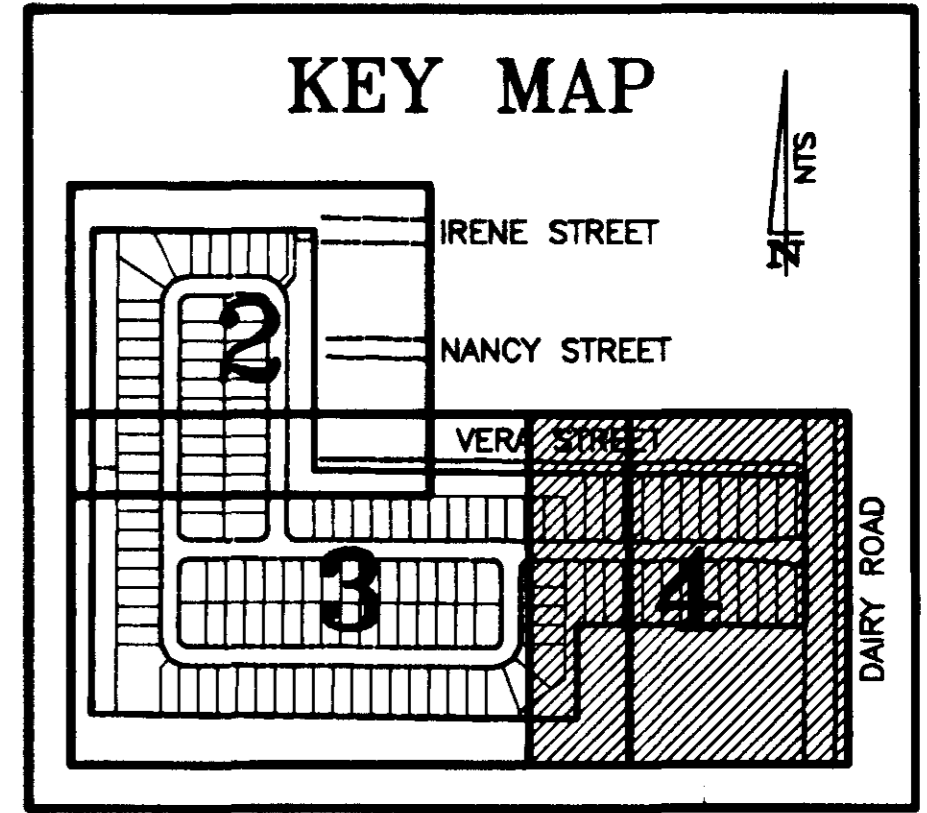
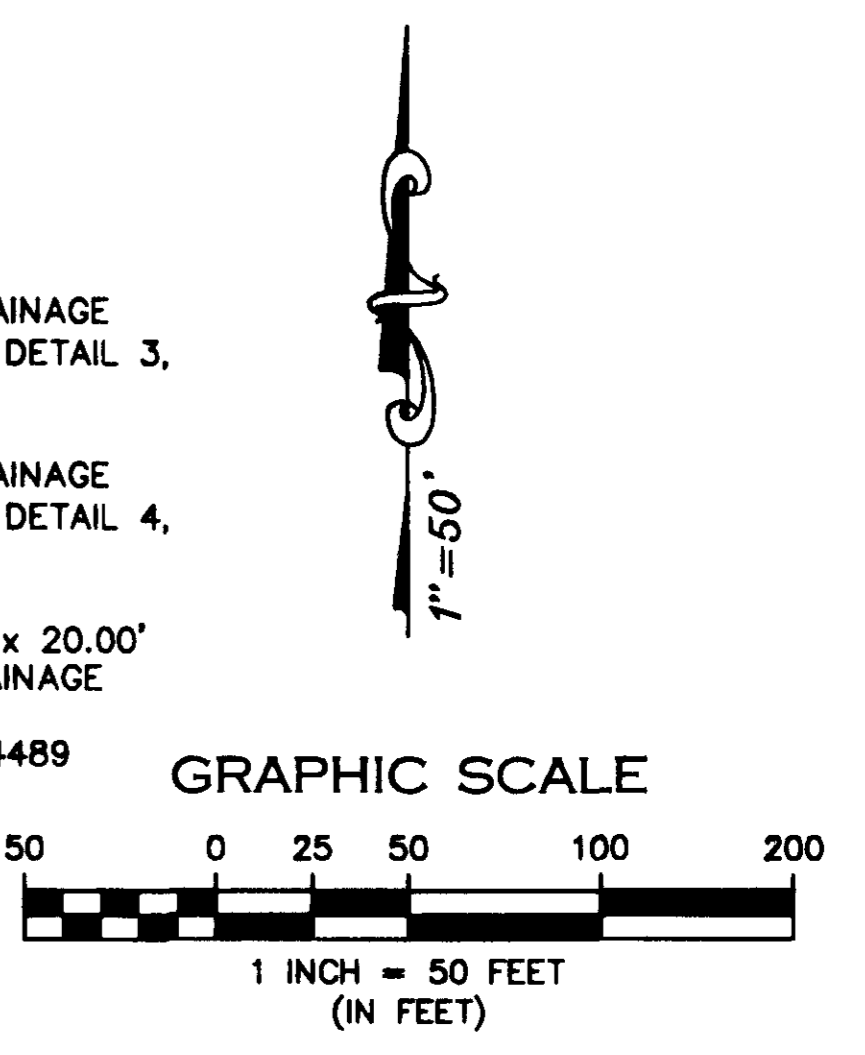
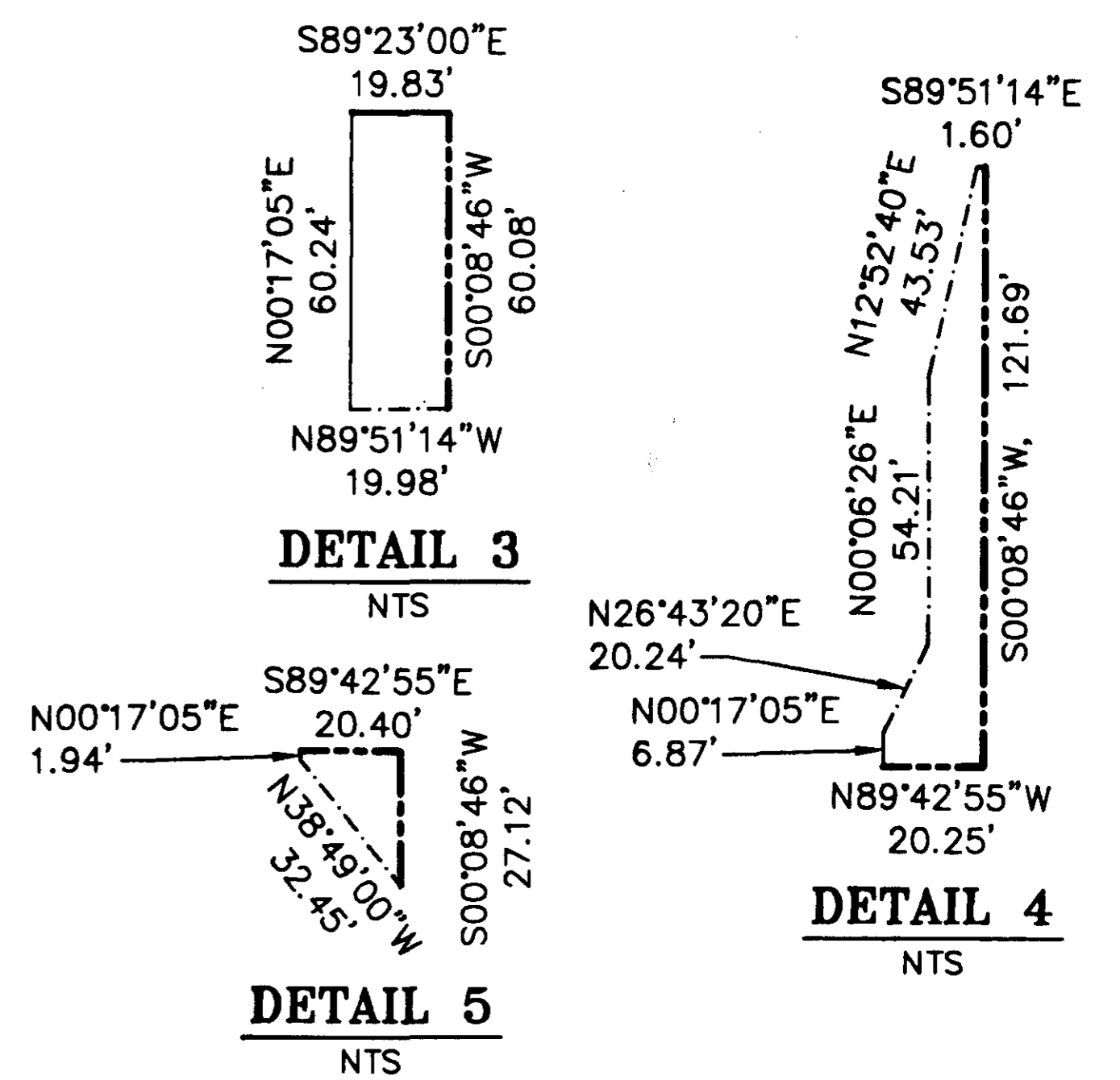


UTILITY AND DRAINAGE EASEMENT (SEE DETAIL 3, THIS SHEET)
 UTILITY AND DRAINAGE EASEMENT (SEE DETAIL 4, THIS SHEET)
 EXISTING 10.00' x 20.00' PERMANENT DRAINAGE EASEMENT ORB 3442, PG 4489
 UTILITY AND DRAINAGE EASEMENT (SEE DETAIL 5, THIS SHEET)



LINE TABLE		
LINE NUMBER	BEARING	LINE LENGTH
L1	S89°23'00"E	19.83
L2	N89°42'55"W	20.25
L3	S89°42'55"E	20.25
L4	N89°22'52"W	20.79
L5	N89°22'52"W	20.00



LEGEND AND ABBREVIATIONS

AC = ACREAGE
 CM = CONCRETE MONUMENT
 D = DEED
 FND = FOUND
 IR = IRON ROD
 IRC = IRON ROD & CAP
 IP = IRON PIPE
 M = FIELD MEASURED
 N&D = NAIL & DISK
 N&T = NAIL & TAB
 ORB = OFFICIAL RECORDS BOOK
 P = PLAT
 PU&D = PUBLIC UTILITY & DRAINAGE
 PB = PLAT BOOK

RRS = RAILROAD SPIKE
 W/- = WITH

□ = SET PRM = 4X4 CONCRETE MONUMENT, "LB 6612"
 ○ = SET PCP = PK NAIL AND DISK "LB 6612"
 △ = SET PRM = PK NAIL AND DISK "LS 941"
 ▲ = FND PK NAIL AND DISK

ALL LOT CORNER MONUMENTATION = SET 5/8" IRC, "LB 6612"

NOTICE

THIS PLAT, AS RECORDED IN ITS GRAPHIC FORM, IS THE OFFICIAL DEPICTION OF THE SUBDIVIDED LANDS DESCRIBED HEREIN AND WILL IN NO CIRCUMSTANCES BE SUPPLANTED IN AUTHORITY BY ANY OTHER GRAPHIC OR DIGITAL FORM OF THE PLAT. THERE MAY BE ADDITIONAL RESTRICTIONS THAT ARE NOT RECORDED ON THIS PLAT THAT MAY BE FOUND IN THE PUBLIC RECORDS OF THIS COUNTY.

FAIRMONT

A REPLAT OF PORTIONS OF LOTS 17, 18 AND 19, FLORIDA INDIAN RIVER LAND COMPANY, PLAT BOOK 1, PAGE 164
 A SUBDIVISION LOCATED WITHIN SECTION 8, TOWNSHIP 28 SOUTH, RANGE 37 EAST
 CITY OF WEST MELBOURNE, BREVARD COUNTY, FLORIDA

OUTLAW & JONES ENGINEERS, INC.
 CONSULTING CIVIL ENGINEERS
 1222 NORTH HARBOR CITY BOULEVARD • MELBOURNE, FL 32935
 TELEPHONE: 321-254-9721 • FAX: 321-242-7854
 EMAIL: ORS1@EARTHLINK.NET • EB NO. 4403 • LB NO. 6612

APRIL 2004
 S723-44 11\723-44\PLAT