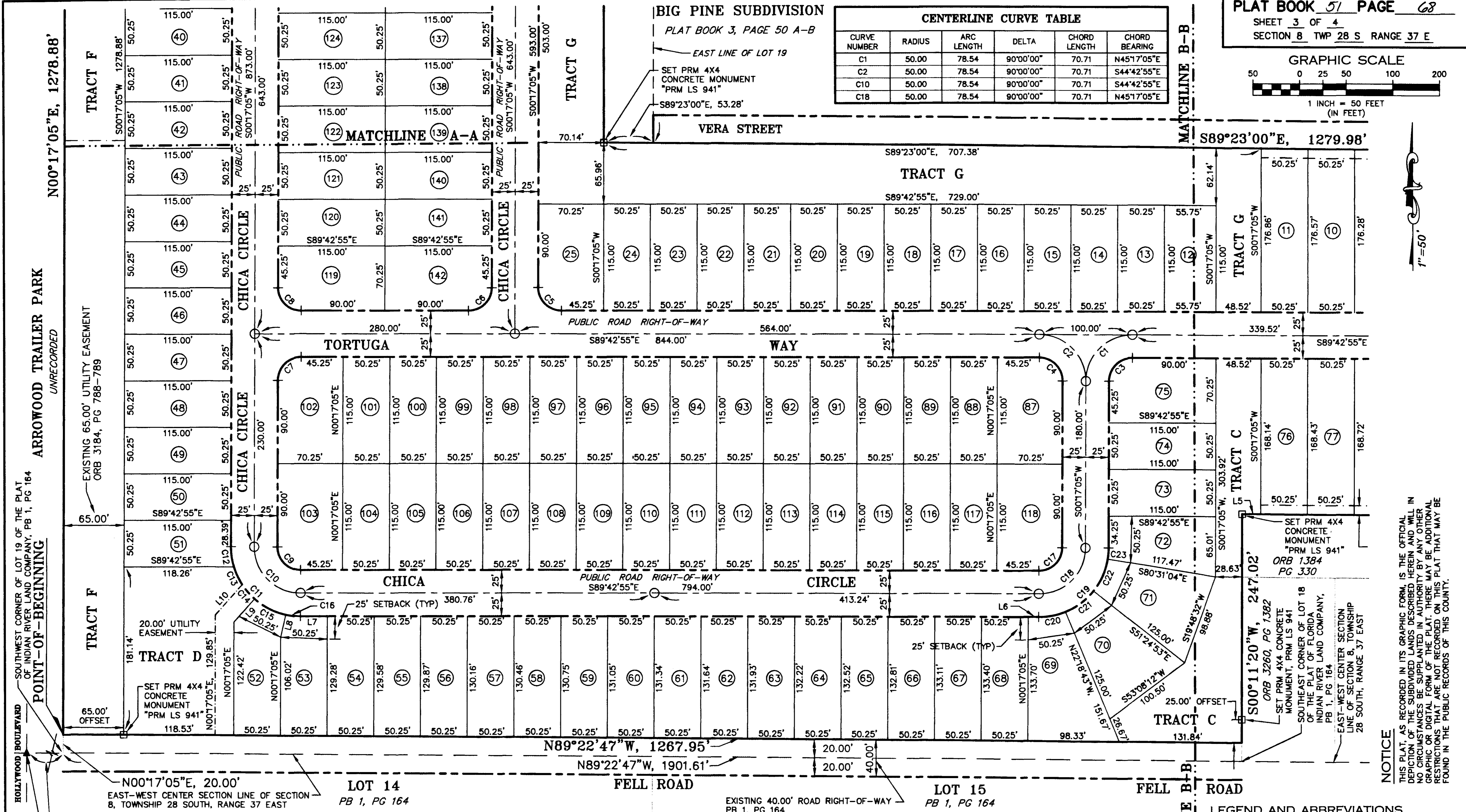


**CENTERLINE CURVE TABLE**

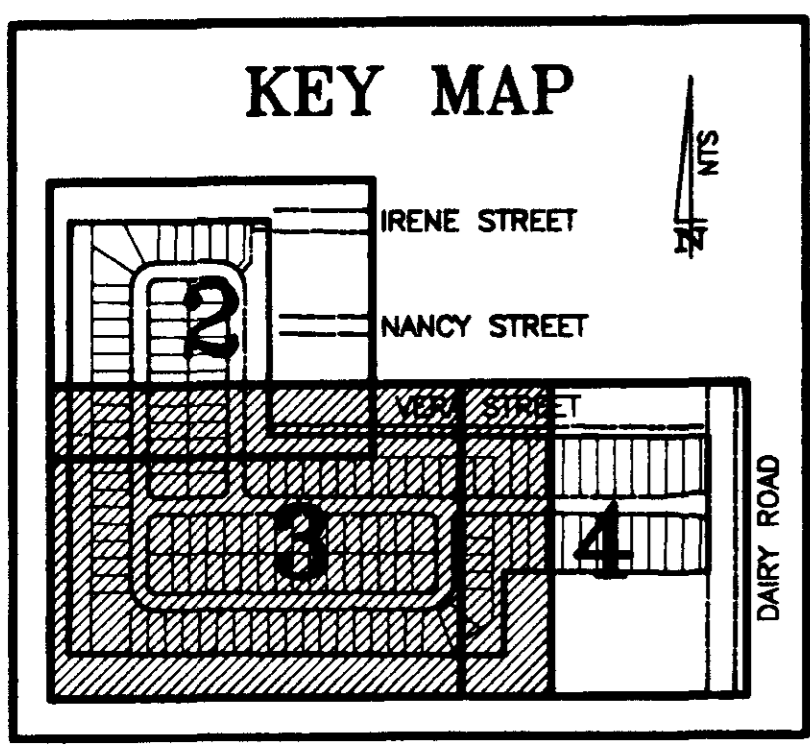
CURVE NUMBER	RADIUS	ARC LENGTH	DELTA	CHORD LENGTH	CHORD BEARING
C1	50.00	78.54	90°00'00"	70.71	N45°17'05"E
C2	50.00	78.54	90°00'00"	70.71	S44°42'55"E
C10	50.00	78.54	90°00'00"	70.71	S44°42'55"E
C18	50.00	78.54	90°00'00"	70.71	N45°17'05"E

**BIG PINE SUBDIVISION**  
 PLAT BOOK 3, PAGE 50 A-B



ARROWOOD TRAILER PARK  
 UNRECORDED  
 EXISTING 65.00' UTILITY EASEMENT  
 ORB 3184, PG 788-789

**NOTICE**  
 THIS PLAT, AS RECORDED IN ITS GRAPHIC FORM, IS THE OFFICIAL DEPICTION OF THE SUBDIVIDED LANDS DESCRIBED HEREIN AND WILL IN NO CIRCUMSTANCES BE SUPPLANTED IN AUTHORITY BY ANY OTHER GRAPHIC OR DIGITAL FORM OF THE PLAT. THERE MAY BE ADDITIONAL RESTRICTIONS THAT ARE NOT RECORDED ON THIS PLAT THAT MAY BE FOUND IN THE PUBLIC RECORDS OF THIS COUNTY.



**LINE TABLE**

LINE NUMBER	BEARING	LINE LENGTH
L5	N89°22'52"W	20.00
L6	S89°42'55"E	11.24
L7	S89°42'55"E	29.01
L8	S12°30'56"W	25.24
L9	N41°37'06"E	33.24
L10	S41°37'06"W	43.50

**CURVE TABLE**

CURVE NUMBER	RADIUS	ARC LENGTH	DELTA
C1	50.00	78.54	90°00'00"
C2	50.00	78.54	90°00'00"
C3	25.00	39.27	90°00'00"
C4	25.00	39.27	90°00'00"
C5	25.00	39.27	90°00'00"
C6	25.00	39.27	90°00'00"
C7	25.00	39.27	90°00'00"
C8	25.00	39.27	90°00'00"
C9	25.00	39.27	90°00'00"
C10	50.00	78.54	90°00'00"
C11	75.00	117.81	90°00'00"

**CURVE TABLE**

CURVE NUMBER	RADIUS	ARC LENGTH	DELTA
C12	75.00	22.18	16°56'33"
C13	75.00	21.28	16°15'28"
C14	75.00	20.24	15°27'58"
C15	75.00	38.10	29°06'11"
C16	75.00	16.01	12°13'50"
C17	25.00	39.27	90°00'00"
C18	50.00	78.54	90°00'00"
C19	75.00	117.81	90°00'00"
C20	75.00	29.58	22°35'48"
C21	75.00	38.10	29°06'11"
C22	75.00	38.10	29°06'11"
C23	75.00	12.04	9°11'50"

**FAIRMONT**  
 A REPLAT OF PORTIONS  
 OF LOTS 17, 18 AND 19,  
 FLORIDA INDIAN RIVER LAND  
 COMPANY, PLAT BOOK 1, PAGE 164  
 A SUBDIVISION LOCATED WITHIN  
 SECTION 8, TOWNSHIP 28 SOUTH,  
 RANGE 37 EAST  
 CITY OF WEST MELBOURNE,  
 BREVARD COUNTY, FLORIDA

**LEGEND AND ABBREVIATIONS**

AC = ACREAGE	RRS = RAILROAD SPIKE
CM = CONCRETE MONUMENT	W/W = WITH
D = DEED	
FND = FOUND	
IR = IRON ROD	
IRC = IRON ROD & CAP	
IP = IRON PIPE	
M = FIELD MEASURED	
N&D = NAIL & DISK	
N&T = NAIL & TAB	
ORB = OFFICIAL RECORDS BOOK	
P = PLAT	
PU&D = PUBLIC UTILITY & DRAINAGE	
PB = PLAT BOOK	
	□ = SET PRM = 4X4 CONCRETE MONUMENT, "LB 6612"
	○ = SET PCP = PK NAIL AND DISK "LB 6612"
	△ = SET PRM = PK NAIL AND DISK "LS 941"
	▲ = FND PK NAIL AND DISK
	ALL LOT CORNER MONUMENTATION = SET 5/8" IRC, "LB 6612"

**OUTLAW & JONES ENGINEERS, INC.**  
 CONSULTING CIVIL ENGINEERS  
 1222 NORTH HARBOR CITY BOULEVARD • MELBOURNE, FL 32935  
 TELEPHONE: 321-254-9721 • FAX: 321-242-7854  
 EMAIL: ORS1@EARTHLINK.NET • EB NO. 4403 • LB NO. 6612  
 APRIL 2004