

**CENTERLINE CURVE TABLE**

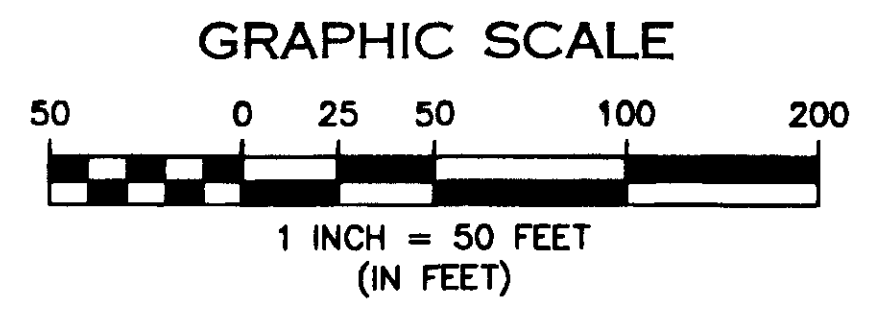
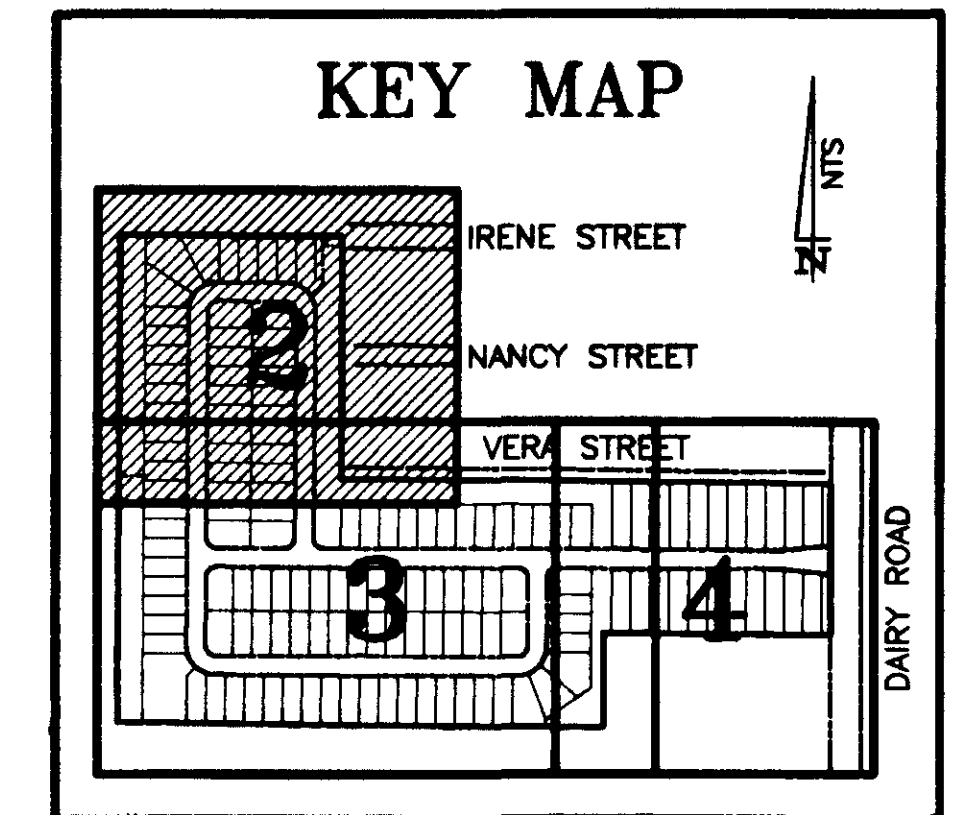
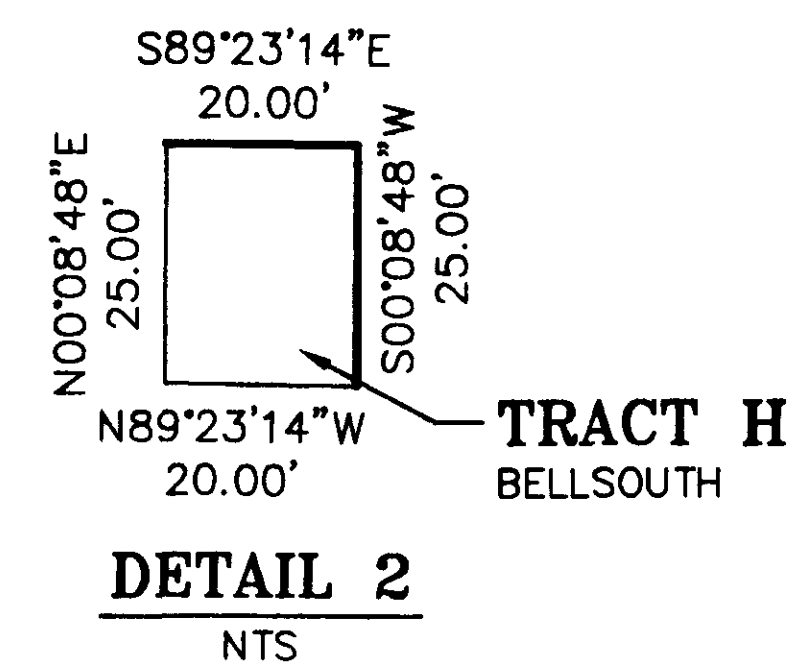
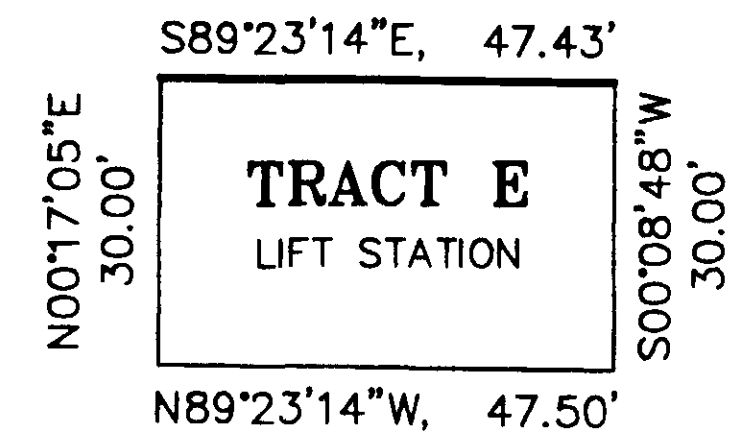
CURVE NUMBER	RADIUS	ARC LENGTH	DELTA	CHORD LENGTH	CHORD BEARING
C25	50.00	78.54	90°00'00"	70.71	N45°17'05"E
C32	50.00	78.54	90°00'00"	70.71	S44°42'55"E

**LINE TABLE**

LINE NUMBER	BEARING	LINE LENGTH
L11	N89°42'55"W	4.93
L12	N89°42'55"W	24.32
L13	S15°14'49"W	25.44
L14	S44°21'00"W	34.54
L15	S44°21'00"W	45.35
L16	N00°17'05"E	26.98
L17	N89°23'14"W	31.13
L18	N89°23'14"W	16.40
L19	S00°08'48"E	5.00
L20	N89°23'14"W	20.00

**CURVE TABLE**

CURVE NUMBER	RADIUS	ARC LENGTH	DELTA
C24	25.00	39.27	90°00'00"
C25	50.00	78.54	90°00'00"
C26	75.00	117.81	90°00'00"
C27	75.00	9.67	7°23'11"
C28	75.00	35.67	27°14'59"
C29	75.00	38.10	29°06'11"
C30	75.00	34.38	26°15'40"
C31	25.00	39.27	90°00'00"
C32	50.00	78.54	90°00'00"
C33	75.00	117.81	90°00'00"
C34	75.00	19.59	14°57'44"
C35	75.00	38.10	29°06'11"
C36	75.00	20.24	15°27'58"
C37	75.00	39.88	30°28'08"



- LEGEND AND ABBREVIATIONS**
- AC = ACREAGE
  - CM = CONCRETE MONUMENT
  - D = DEED
  - FND = FOUND
  - IR = IRON ROD
  - IRC = IRON ROD & CAP
  - IP = IRON PIPE
  - M = FIELD MEASURED
  - N&D = NAIL & DISK
  - N&T = NAIL & TAB
  - ORB = OFFICIAL RECORDS BOOK
  - P = PLAT
  - P&D = PUBLIC UTILITY & DRAINAGE
  - PB = PLAT BOOK
  - RRS = RAILROAD SPIKE
  - W/- WITH
  - = SET PRM = 4X4 CONCRETE MONUMENT, "LB 6612"
  - = SET PCP = PK NAIL AND DISK "LB 6612"
  - △ = SET PRM = PK NAIL AND DISK "LS 941"
  - ▲ = FND PK NAIL AND DISK
  - ALL LOT CORNER MONUMENTATION = SET 5/8" IRC, "LB 6612"

**NOTICE**

THIS PLAT, AS RECORDED IN ITS GRAPHIC FORM, IS THE OFFICIAL DEPICTION OF THE SUBDIVIDED LANDS DESCRIBED HEREIN AND WILL IN NO CIRCUMSTANCES BE SUPPLANTED IN AUTHORITY BY ANY OTHER GRAPHIC OR DIGITAL FORM OF THE PLAT. THERE MAY BE ADDITIONAL RESTRICTIONS THAT ARE NOT RECORDED ON THIS PLAT THAT MAY BE FOUND IN THE PUBLIC RECORDS OF THIS COUNTY.

# FAIRMONT

A REPLAT OF PORTIONS OF LOTS 17, 18 AND 19,  
 FLORIDA INDIAN RIVER LAND COMPANY, PLAT BOOK 1, PAGE 164  
 A SUBDIVISION LOCATED WITHIN  
 SECTION 8, TOWNSHIP 28 SOUTH, RANGE 37 EAST  
 CITY OF WEST MELBOURNE, BREVARD COUNTY, FLORIDA

**OUTLAW & JONES ENGINEERS, INC.**  
 CONSULTING CIVIL ENGINEERS  
 1222 NORTH HARBOR CITY BOULEVARD • MELBOURNE, FL 32935  
 TELEPHONE: 321-254-9721 • FAX: 321-242-7854  
 EMAIL: ORS1@EARTHLINK.NET • EB NO. 4403 • LB NO. 6612  
 APRIL 2004  
 S723-44 11\723-44\PLAT