

WINGATE ESTATES - PHASE SIX

VIERA NORTH P.U.D., PARCELS F2-F3

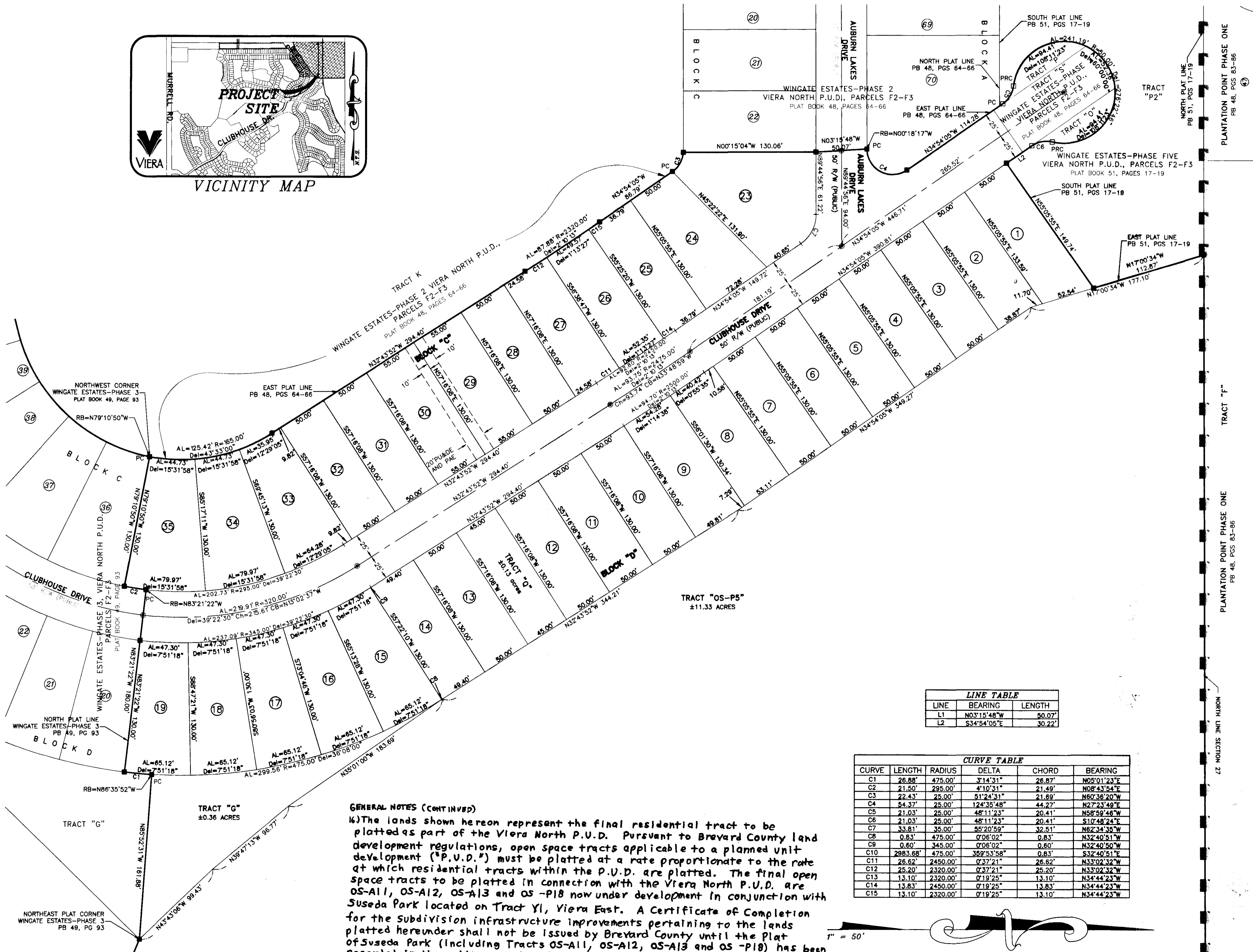
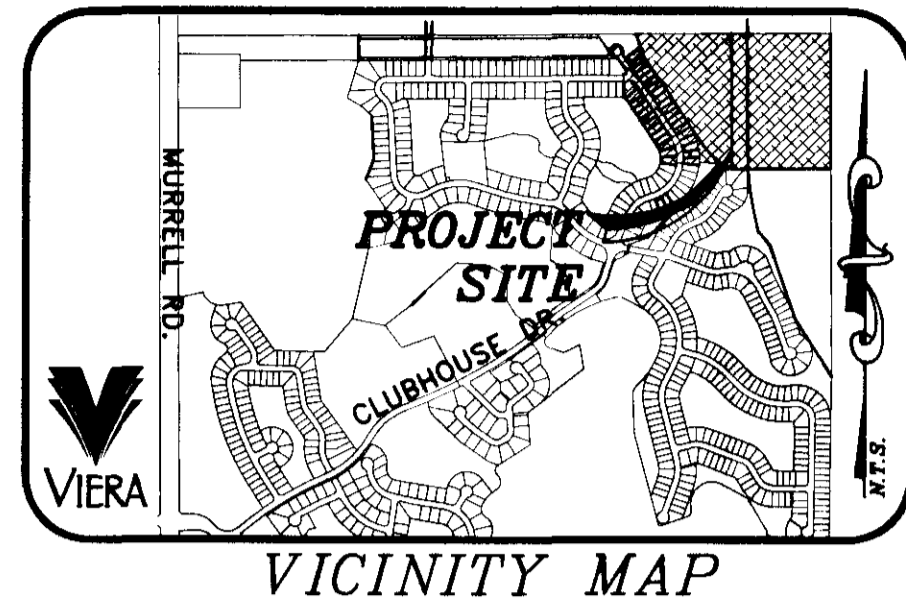
AND A REPLAT OF PORTIONS OF TRACT P, TRACT S AND TRACT O
WINGATE ESTATES - PHASE TWO AS RECORDED IN PLAT BOOK 48, PAGES 64-66

SECTION 27, TOWNSHIP 25 SOUTH, RANGE 36 EAST BREVARD COUNTY, FLORIDA

PLAT BOOK 51, PAGE 61

SHEET 2 OF 2

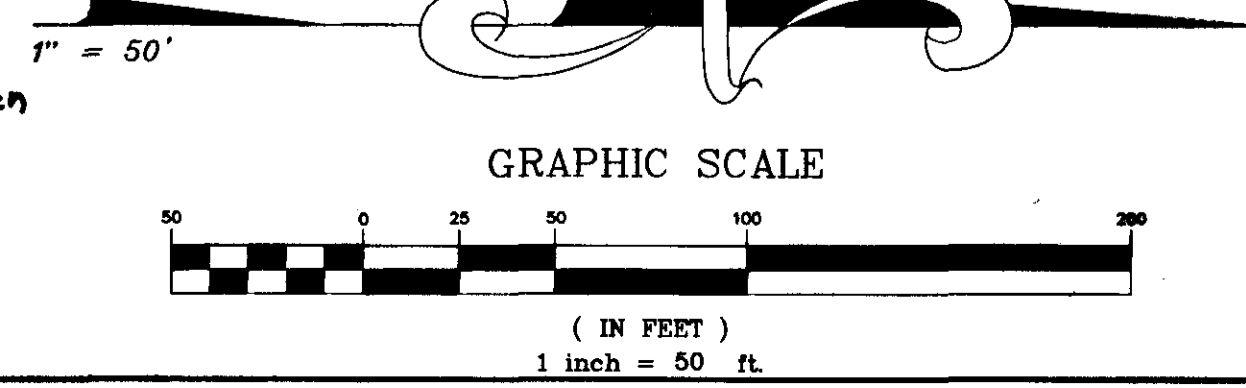
SECTION 27, TWP. 25 S., RANGE 36 E.



LINE	BEARING	LENGTH
L1	N03°15'48"W	50.07'
L2	S34°54'05"E	30.22'

CURVE	LENGTH	RADIUS	DELTA	CHORD	BEARING
C1	26.88'	475.00'	3°14'31"	26.87'	N05°01'23"E
C2	21.50'	295.00'	4°10'31"	21.49'	N08°43'54"E
C3	22.43'	25.00'	51°24'31"	21.69'	N60°36'20"W
C4	54.37'	25.00'	124°35'48"	44.27'	N27°23'49"E
C5	21.03'	25.00'	48°11'23"	20.41'	N58°59'46"W
C6	21.03'	25.00'	48°11'23"	20.41'	S10°48'24"E
C7	33.81'	35.00'	55°20'59"	32.51'	N62°34'35"W
C8	0.83'	475.00'	0°06'02"	0.83'	N32°40'51"W
C9	0.60'	345.00'	0°06'02"	0.60'	N32°40'51"W
C10	2983.68'	475.00'	359°53'58"	0.83'	S32°40'51"E
C11	26.62'	2450.00'	0°37'21"	26.62'	N33°02'32"W
C12	25.20'	2320.00'	0°37'21"	25.20'	N33°02'32"W
C13	13.10'	2320.00'	0°18'25"	13.10'	N34°44'23"W
C14	13.83'	2450.00'	0°18'25"	13.83'	N34°44'23"W
C15	13.10'	2320.00'	0°18'25"	13.10'	N34°44'23"W

GENERAL NOTES (CONTINUED)
 16) The lands shown hereon represent the final residential tract to be platted as part of the Viera North P.U.D. Pursuant to Brevard County land development regulations, open space tracts applicable to a planned unit development ("P.U.D.") must be platted at a rate proportionate to the rate at which residential tracts within the P.U.D. are platted. The final open space tracts to be platted in connection with the Viera North P.U.D. are OS-A11, OS-A12, OS-A13 and OS-P18 now under development in conjunction with Suseda Park located on Tract Y1, Viera East. A Certificate of Completion for the subdivision infrastructure improvements pertaining to the lands platted hereunder shall not be issued by Brevard County until the Plat of Suseda Park (including Tracts OS-A11, OS-A12, OS-A13 and OS-P18) has been recorded in the public records of Brevard County, Florida.



THIS PLAT PREPARED BY
B.S.E. CONSULTANTS, INC.
 CONSULTING - ENGINEERING - LAND SURVEYING
 312 SOUTH HARBOR CITY BOULEVARD, SUITE 4
 MELBOURNE, FLORIDA 32901 PHONE: (321) 725-3674 FAX: (321) 723-1159
 CERTIFICATE OF BUSINESS AUTHORIZATION: 4905
 CERTIFICATE OF LAND SURVEYING BUSINESS AUTHORIZATION: LB0004905