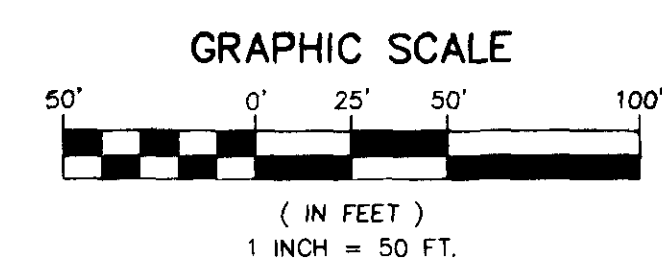
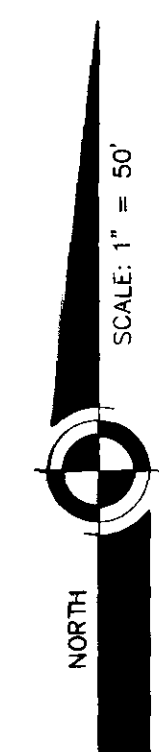
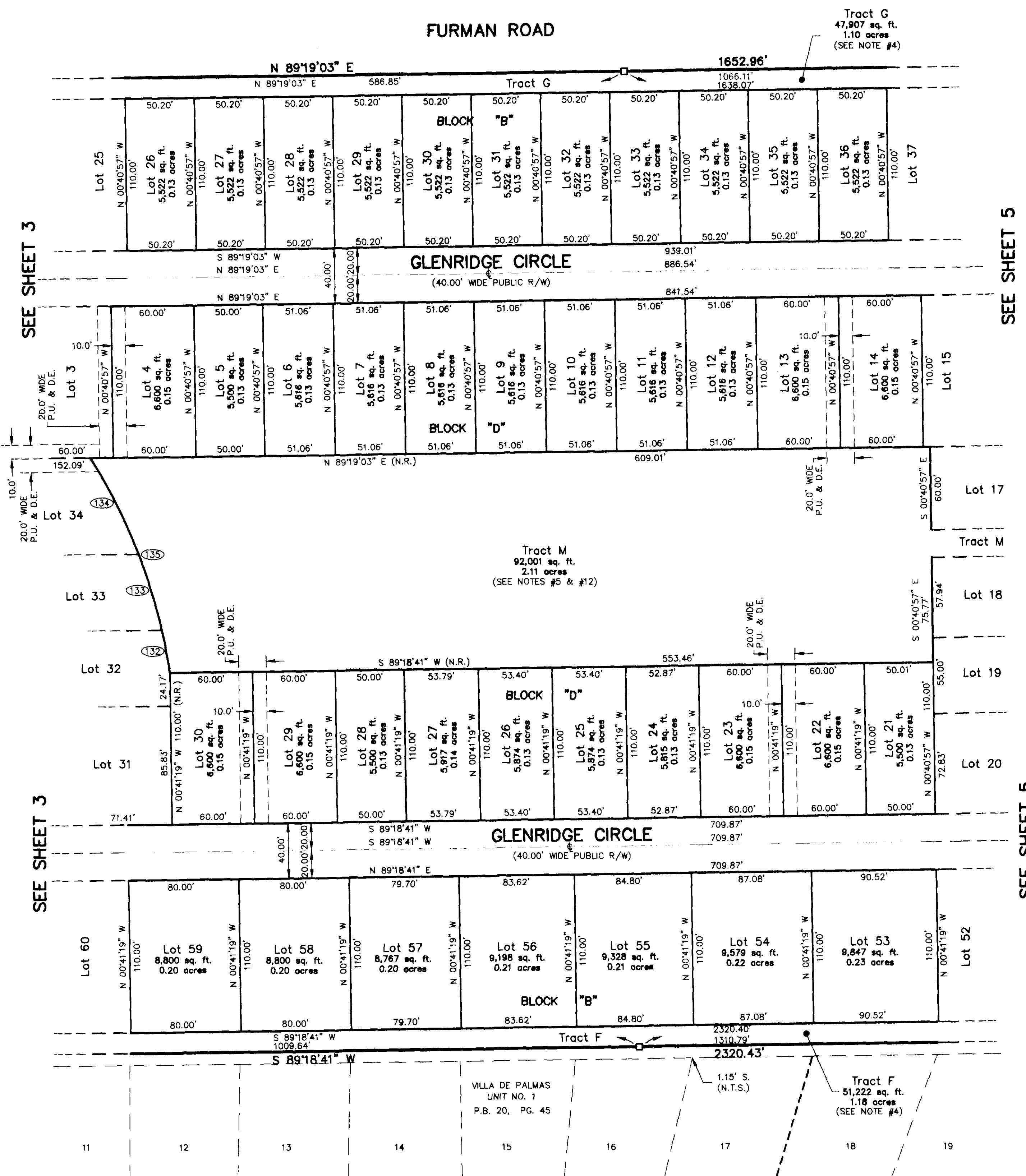


PALMETTO

A SUBDIVISION LYING IN SECTION 14, TOWNSHIP 24 SOUTH, RANGE 36 EAST,
BREVARD COUNTY, FLORIDA.



| CURVE TABLE | | | | | | |
|-------------|--------|-----------|--------|---------|--------|---------------|
| CURVE | RADIUS | DELTA | LENGTH | TANGENT | CHORD | CHORD BEARING |
| 132 | 400.00 | 4°29'02" | 31.30 | 15.66 | 31.30 | N10°36'35"W |
| 133 | 400.00 | 8°12'51" | 57.35 | 28.72 | 57.30 | N16°57'32"W |
| 134 | 400.00 | 11°10'14" | 77.98 | 39.12 | 77.86 | N26°39'04"W |
| 135 | 400.00 | 23°52'07" | 166.63 | 84.54 | 165.43 | N20°18'07"W |



SEE SHEET 3

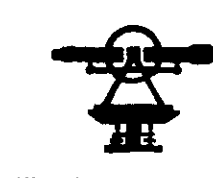
SEE SHEET 3

SEE SHEET 5

SEE SHEET 5

LEGEND:

- B-MEG BUSSEN - MAYER ENGINEERING GROUP
- FND. FOUND
- C.M. CONCRETE MONUMENT
- R.R.S. RAILROAD SPIKE
- RB REINFORCEMENT BAR
- LB LICENSED BUSINESS NUMBER
- P.R.M. PERMANENT REFERENCE MONUMENT
- P.C.P. PERMANENT CONTROL POINT
- P.I. POINT-OF-INTERSECTION
- P.C. POINT-OF-CURVATURE
- P.T. POINT-OF-TANGENCY
- P.R.C. POINT-OF-REVERSE CURVATURE
- P.C.C. POINT-OF-COMPOUND CURVATURE
- R.P. RADIUS POINT
- R.P.B. ROAD PLAT BOOK
- O.R.B. OFFICIAL RECORD BOOK
- P.B. PLAT BOOK
- PG. PAGE
- R. RADIUS
- Δ CENTRAL ANGLE
- L ARC LENGTH
- T TANGENT
- C.B. CHORD BEARING
- CH. CHORD
- (R.) RADIAL LINE
- (N.R.) NON-RADIAL LINE
- P.U. & D.E. PUBLIC UTILITY & PUBLIC DRAINAGE EASEMENT
- P.U.E. PUBLIC UTILITY EASEMENT
- P.D.E. PUBLIC DRAINAGE EASEMENT
- a.k.a. ALSO KNOWN AS
- CL CENTERLINE
- CT CURVE TABLE NUMBER
- LT LINE TABLE NUMBER
- N.T.S. NOT TO SCALE
- T.P. TAX PARCEL



Bussen-Mayer Engineering Group

100 PARNELL STREET • MERRITT ISLAND, FLORIDA 32953
PH. NO.: (321) 463-0010

