

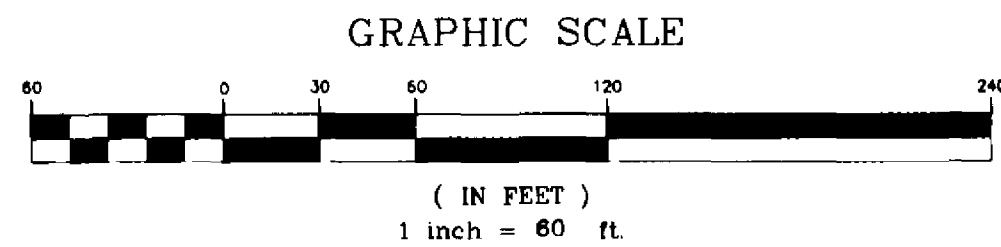
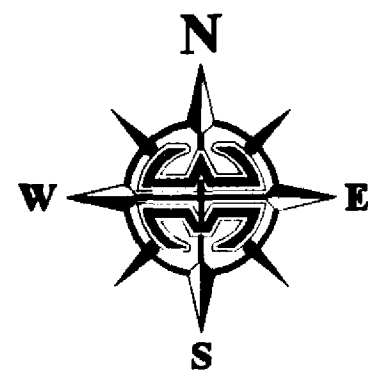
CASABELLA PHASE TWO

A REPLAT OF TRACT "F",
 CASABELLA PHASE ONE, PLAT BOOK 47, PAGES 100-102,
 AND A PORTION OF LANDS LYING IN SECTION 24, TOWNSHIP 26 SOUTH,
 RANGE 36 EAST
 BREVARD COUNTY, FLORIDA

NOTE:
 PRIOR TO THE RELEASE OF THE PERFORMANCE BOND,
 ALL LOT CORNER MONUMENTATION WILL BE SET AS
 1/2" IRON RODS WITH CAPS MARKED "LB 3608".

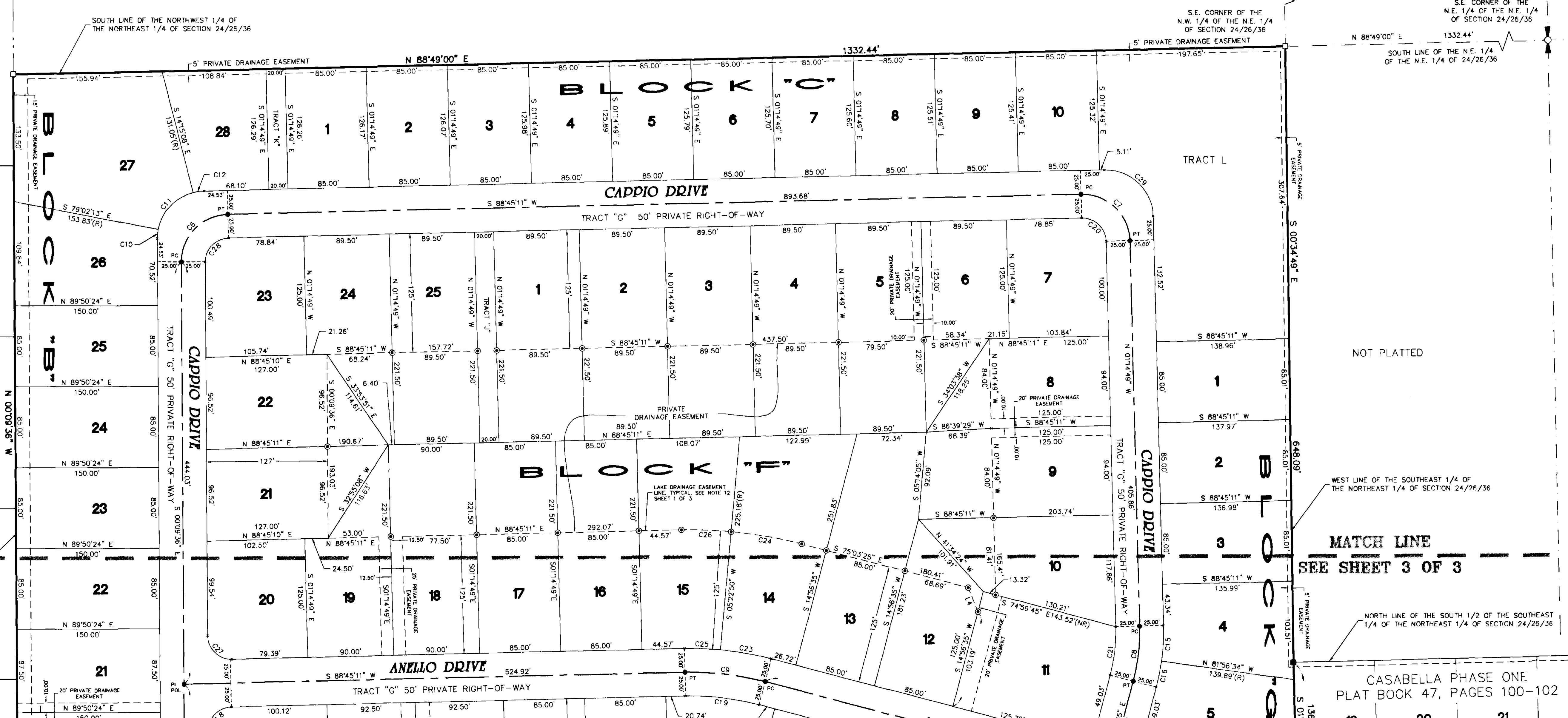
CURVE	RADIUS	DELTA	LENGTH	CHORD	CHORD BEARING
C1	135.00'	16°11'24"	38.15'	38.02'	N 83°09'07" W
C2	185.00'	3°25'20"	11.05'	11.05'	S 76°46'05" E
C3	25.00'	91°05'14"	39.74'	35.69'	N 45°42'12" W
C4	150.00'	16°11'24"	42.39'	42.24'	N 83°09'07" W
C5	310.00'	3°25'20"	18.52'	18.51'	S 76°46'05" E
C6	50.00'	88°54'46"	77.59'	70.04'	S 44°17'48" W
C7	50.00'	90°00'00"	78.54'	70.71'	N 46°14'49" W
C8	207.27'	16°11'24"	58.57'	58.37'	N 06°50'53" E
C9	300.00'	16°11'24"	84.72'	84.49'	N 83°09'07" W
C10	50.00'	11°07'22"	9.71'	9.69'	S 05°24'06" W
C11	50.00'	64°47'05"	56.54'	53.57'	S 43°21'19" W
C12	50.00'	13°00'19"	11.35'	11.32'	S 82°15'01" W
C15	232.27'	9°18'15"	37.72'	37.68'	N 03°24'18" E
C16	232.27'	6°53'09"	27.91'	27.90'	N 11°30'00" E
C17	25.00'	90°00'00"	39.27'	35.36'	S 30°03'25" E
C18	25.00'	88°54'46"	38.80'	35.02'	S 44°17'48" W
C19	225.00'	16°11'24"	72.71'	72.45'	N 83°09'07" W
C20	25.00'	90°00'00"	39.27'	35.36'	N 46°14'49" W
C21	182.27'	16°11'24"	51.50'	51.33'	N 06°50'53" E
C22	25.00'	90°00'00"	39.27'	35.36'	N 59°56'35" E
C23	325.00'	9°33'44"	54.24'	54.18'	N 79°50'18" W
C24	450.00'	9°33'44"	75.10'	75.02'	N 79°50'18" W
C25	325.00'	6°37'39"	37.59'	37.57'	N 87°55'59" W
C26	450.00'	6°37'39"	52.05'	52.02'	N 87°55'59" W
C27	25.00'	91°05'14"	39.74'	35.69'	S 45°42'12" E
C28	25.00'	88°54'46"	38.80'	35.02'	S 44°17'48" W
C29	50.00'	90°00'00"	78.54'	70.71'	N 46°14'49" W

LINE	LENGTH	BEARING
L1(R)	50.00'	S 14°56'35" W
L2(R)	50.00'	S 89°50'24" W
L3	14.83'	N 00°09'36" W
L4	27.25'	N 21°50'36" W



NOTICE: THIS PLAT, AS RECORDED IN ITS GRAPHIC FORM, IS THE OFFICIAL DEPICTION OF THE SUBDIVIDED LANDS DESCRIBED HEREIN AND WILL IN NO CIRCUMSTANCES BE SUPPLANTED IN AUTHORITY BY ANY OTHER GRAPHIC OR DIGITAL FORM OF THE PLAT. THERE MAY BE ADDITIONAL RESTRICTIONS THAT ARE NOT RECORDED ON THIS PLAT THAT MAY BE FOUND IN THE PUBLIC RECORDS OF THIS COUNTY.

- LEGEND:**
- = 4"x4" CONCRETE MONUMENT WITH NAIL AND DISK MARKED "PRM PLS 5060" (SET)
 - = 4"x4" CONCRETE MONUMENT WITH NAIL AND DISK MARKED "PRM PLS 5060" (FOUND)
 - = NAIL AND DISK MARKED "PCP PLS 5060" (SET)
 - = NAIL AND DISK MARKED "PCP PLS 5060" (FOUND)
 - △ = NAIL AND DISK MARKED "PRM PLS 5060" (SET)
 - △ = NAIL AND DISK MARKED "PRM PLS 5060" (FOUND)
 - ▲ = NAIL AND DISK MARKED "PRM PLS 5060" (FOUND)
 - PL&DE = PUBLIC UTILITIES AND DRAINAGE EASEMENT
 - C# = CURVE NUMBER FOR CURVE TABLE
 - L# = LINE NUMBER FOR LINE TABLE
 - R/W = RIGHT-OF-WAY
 - P.B. = PLAT BOOK
 - PC = PAGE
 - RP = RADIUS POINT
 - POL = POINT-ON-LINE
 - POC = POINT-ON-CURVE
 - PI = POINT-OF-INTERSECTION
 - PT = POINT-OF-TANGENCY
 - PC = POINT-OF-CURVATURE
 - PRC = POINT-OF-REVERSE CURVATURE
 - PRC = POINT-OF-COMPOUND CURVATURE
 - P.O.B. = POINT-OF-BEGINNING
 - P.O.C. = POINT-OF-COMMENCEMENT
 - PRM = PERMANENT REFERENCE MONUMENT
 - PCP = PERMANENT CONTROL POINT
 - X = DENOTES CHANGE IN DIRECTION
 - (R) = RADIAL
 - (NR) = NON-RADIAL
 - ESMT = EASEMENT
 - O.R.B./O.R.Book = OFFICIAL RECORDS BOOK
 - H.O.A. = HOME OWNERS ASSOCIATION
 - LB = LICENSED BUSINESS
 - PLS = PROFESSIONAL LAND SURVEYOR
 - PSM = PROFESSIONAL SURVEYOR AND MAPPER
 - R = RADIUS
 - D = DELTA
 - L = LENGTH
 - CD = CHORD DISTANCE
 - CB = CHORD BEARING
 - = 1/2" IRON ROD WITH PLASTIC CAP MARKED "WITNESS LB 3608" SET



CASABELLA PHASE ONE
 PLAT BOOK 47, PAGES 100-102