

CHELSEA PARK UNIT 9

A SUBDIVISION OF A PORTION OF
SECTION 22 TOWNSHIP 25 SOUTH, RANGE 36 EAST

AND

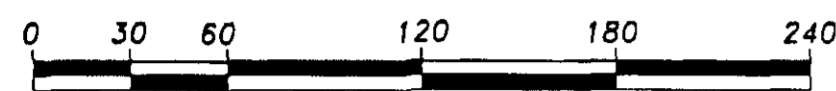
A RESUBDIVISION OF GLENBROOK CIRCLE, TRACT 6,
TRACT 7 LYING SOUTH OF CHELSEA PARK UNIT 4, PLAT BOOK 45, PAGE 58,
OUT-PARCELS "E" & "F"

CHELSEA PARK UNIT 1, PLAT BOOK 41, PAGES 58 THROUGH 60

THE CITY OF ROCKLEDGE
BREVARD COUNTY, FLORIDA

SCALE 1" = 60' DECEMBER 2003

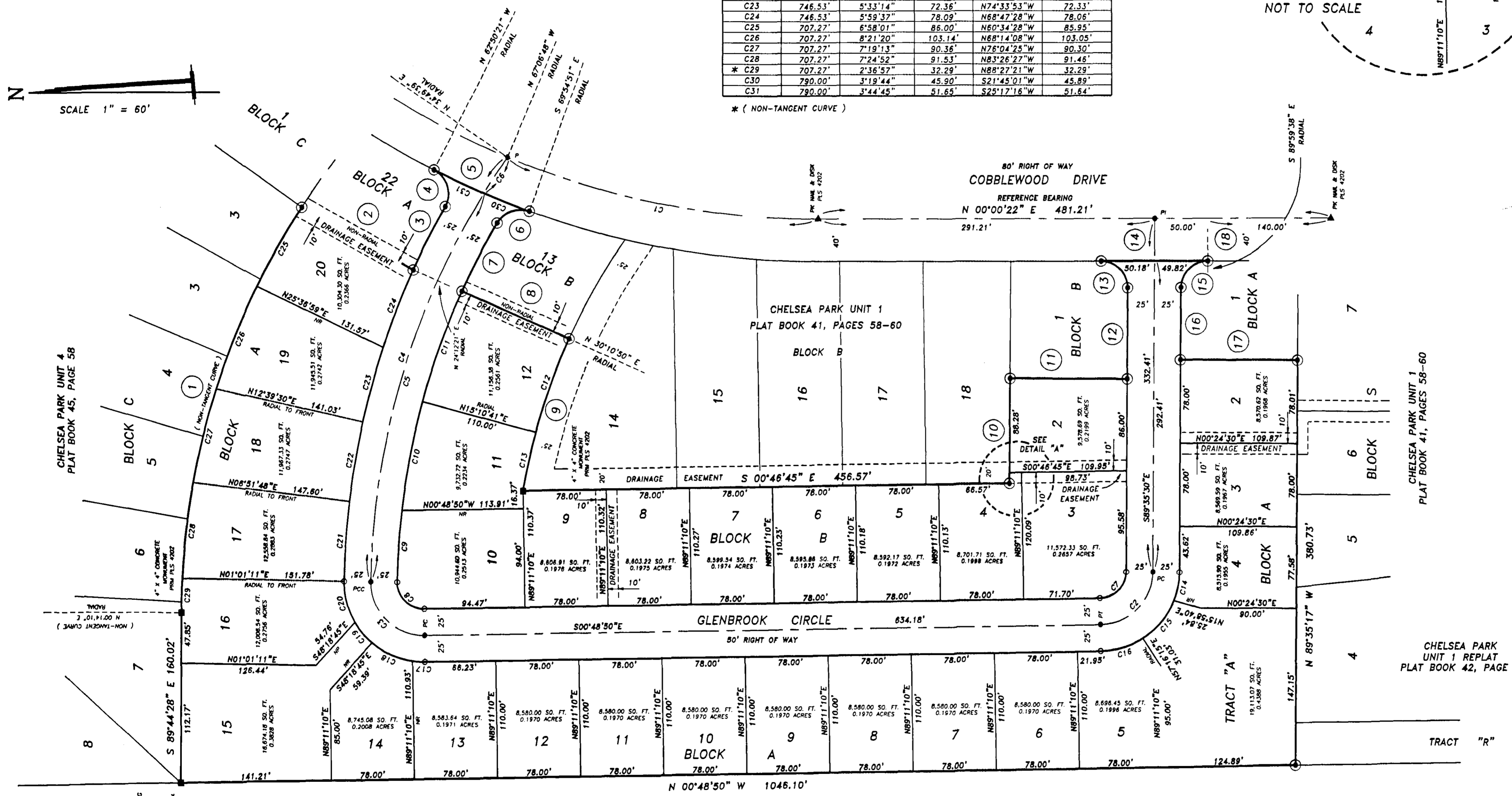
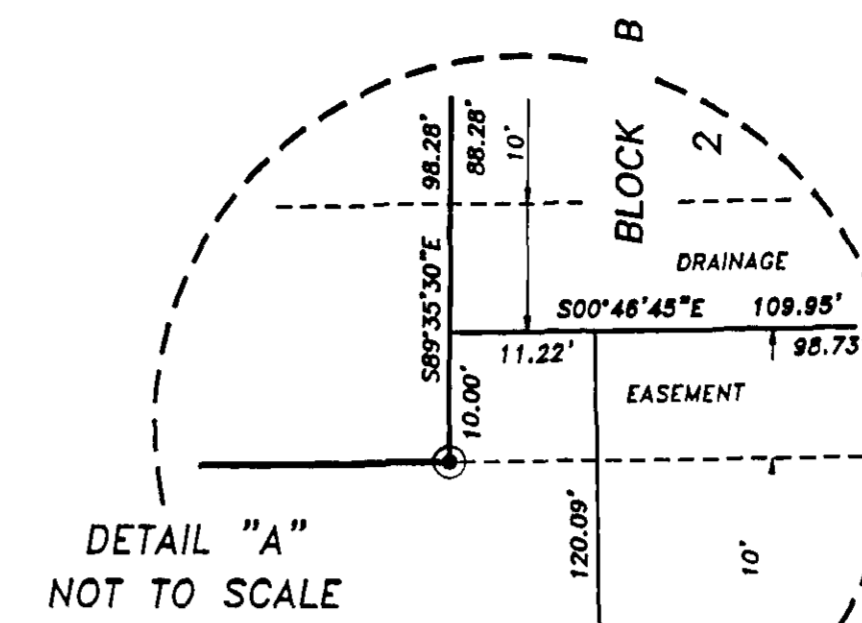
SHEET 2 OF 2



GRAPHIC SCALE IN FEET 1" = 60'

LOT LINE / CENTERLINE CURVE TABLE					
CURVE	RADIUS	DELTA	ARC	CHORD BRG	CHORD
C1	750.00'	22°52'33"	299.45'	S11°26'55"W	297.46'
C2	50.00'	88°46'40"	77.47'	S45°12'10"E	69.95'
C3	50.00'	91°50'01"	80.14'	S45°06'11"W	71.83'
C4	721.53'	33°48'28"	425.74'	N72°04'35"W	419.59'
C5	721.53'	30°34'53"	385.11'	N73°41'33"W	380.86'
C6	721.53'	31°33'55"	40.63'	N56°42'09"W	40.62'
C7	25.00'	88°46'40"	40.07'	S45°12'10"E	34.98'
C8	25.00'	91°50'01"	40.07'	S45°06'11"W	35.92'
C9	696.53'	5°37'51"	68.45'	N86°09'53"W	68.43'
C10	696.53'	8°31'39"	103.67'	N78°05'09"W	103.57'
C11	696.53'	9°02'56"	110.00'	N70°17'51"W	109.89'
C12	586.53'	9°04'09"	92.84'	N70°17'15"W	92.74'
C13	586.53'	5°29'42"	56.25'	N77°34'10"W	56.23'
C14	75.00'	21°06'45"	27.64'	S79°02'07"E	27.48'
C15	75.00'	35°45'00"	46.80'	S50°36'15"E	46.04'
C16	75.00'	31°54'55"	41.78'	S16°46'18"E	41.24'
C17	75.00'	9°01'44"	11.82'	S03°42'02"W	11.81'
C18	75.00'	32°25'14"	42.44'	S24°25'31"W	41.87'
C19	75.00'	19°24'40"	25.41'	S50°20'28"W	25.29'
C20	75.00'	30°58'23"	40.54'	S75°32'00"W	40.05'
C21	746.53'	5°50'37"	76.14'	N86°03'30"W	76.11'
C22	746.53'	5°47'42"	75.50'	N80°14'21"W	75.47'
C23	746.53'	5°33'14"	72.36'	N74°33'53"W	72.33'
C24	746.53'	5°59'37"	78.09'	N68°47'28"W	78.06'
C25	707.27'	6°58'01"	86.00'	N60°34'28"W	85.95'
C26	707.27'	8°21'20"	103.14'	N68°14'08"W	103.05'
C27	707.27'	7°19'13"	90.36'	N78°04'25"W	90.30'
C28	707.27'	7°24'52"	91.53'	N83°26'27"W	91.48'
* C29	707.27'	2°36'57"	32.29'	N88°27'21"W	32.29'
C30	790.00'	3°19'44"	45.90'	S21°45'01"W	45.89'
C31	790.00'	3°44'45"	51.65'	S25°17'16"W	51.64'

*(NON-TANGENT CURVE)



BOUNDARY - LINE & CURVE TABLE

- ① (NON-TANGENT CURVE)
RADIUS = 707.27'
DELTA = 32°42'23"
ARC = 403.32'
CHORD = S 73°25'40" E 397.88'
- ② (NON-RADIAL)
S 29°24'08" W 120.13'
- ③ RADIUS = 746.53'
DELTA = 03°07'19"
ARC = 68.74'
CHORD = S 63°14'00" E 66.71'
- ④ RADIUS = 25.00'
DELTA = 07°04'30"
ARC = 40.22'
CHORD = N 73°14'39" E 36.01'
- ⑤ RADIUS = 790.00'
DELTA = 07°04'30"
ARC = 97.55'
CHORD = S 23°37'24" W 97.49'
- ⑥ RADIUS = 25.00'
DELTA = 79°54'19"
ARC = 34.85'
CHORD = N 19°52'00" W 32.11'
- ⑦ RADIUS = 696.53'
DELTA = 05°57'14"
ARC = 72.38'
CHORD = N 62°47'47" W 72.35'
- ⑧ (NON-RADIAL)
S 24°07'08" W 110.00'
- ⑨ RADIUS = 586.53'
DELTA = 14°33'50"
ARC = 149.09'
CHORD = N 73°02'06" W 148.64'
- ⑩ S 89°35'30" E 98.28'
- ⑪ S 00°24'30" W 109.93'
- ⑫ S 89°35'30" E 85.48'
- ⑬ RADIUS = 25.00'
DELTA = 90°24'18"
ARC = 39.45'
CHORD = N 45°12'26" E 35.48'
- ⑭ S 00°00'22" W 100.00'
- ⑮ RADIUS = 25.00'
DELTA = 89°35'42"
ARC = 39.09'
CHORD = N 44°47'34" W 35.23'
- ⑯ N 89°35'30" W 68.14'
- ⑰ S 00°24'08" W 109.87'
- ⑱ N 89°59'38" W 40.00'

NOTICE: THERE MAY BE ADDITIONAL RESTRICTIONS THAT ARE NOT RECORDED ON THIS PLAT THAT MAY BE FOUND IN THE PUBLIC RECORDS OF THIS COUNTY.

NOTICE: THIS PLAT, AS RECORDED IN ITS GRAPHIC FORM, IS THE OFFICIAL DEPICTION OF THE SUBDIVIDED LANDS DESCRIBED HEREIN AND WILL IN NO CIRCUMSTANCES BE SUPPLANTED IN AUTHORITY BY ANY OTHER GRAPHIC OR DIGITAL FORM OF THE PLAT.

DEITHORN & ASSOCIATES, INC.
476 HIGHWAY A-1-A SUITE 1 B SATELLITE BEACH, FL 32937
(321) 779-8681 FAX (321) 779-8673
LB 8445

ROCKLEDGE AIRPORT
NOT SUBDIVIDED