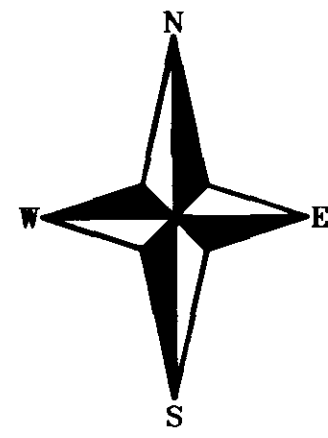
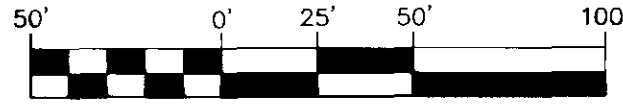


MALABAR LAKES WEST SUBDIVISION PHASE 2

A SUBDIVISION LYING IN SECTION 4, TOWNSHIP 29 SOUTH, RANGE 36 EAST,
BREVARD COUNTY, FLORIDA.



GRAPHIC SCALE



(IN FEET)
1 INCH = 50 FT.

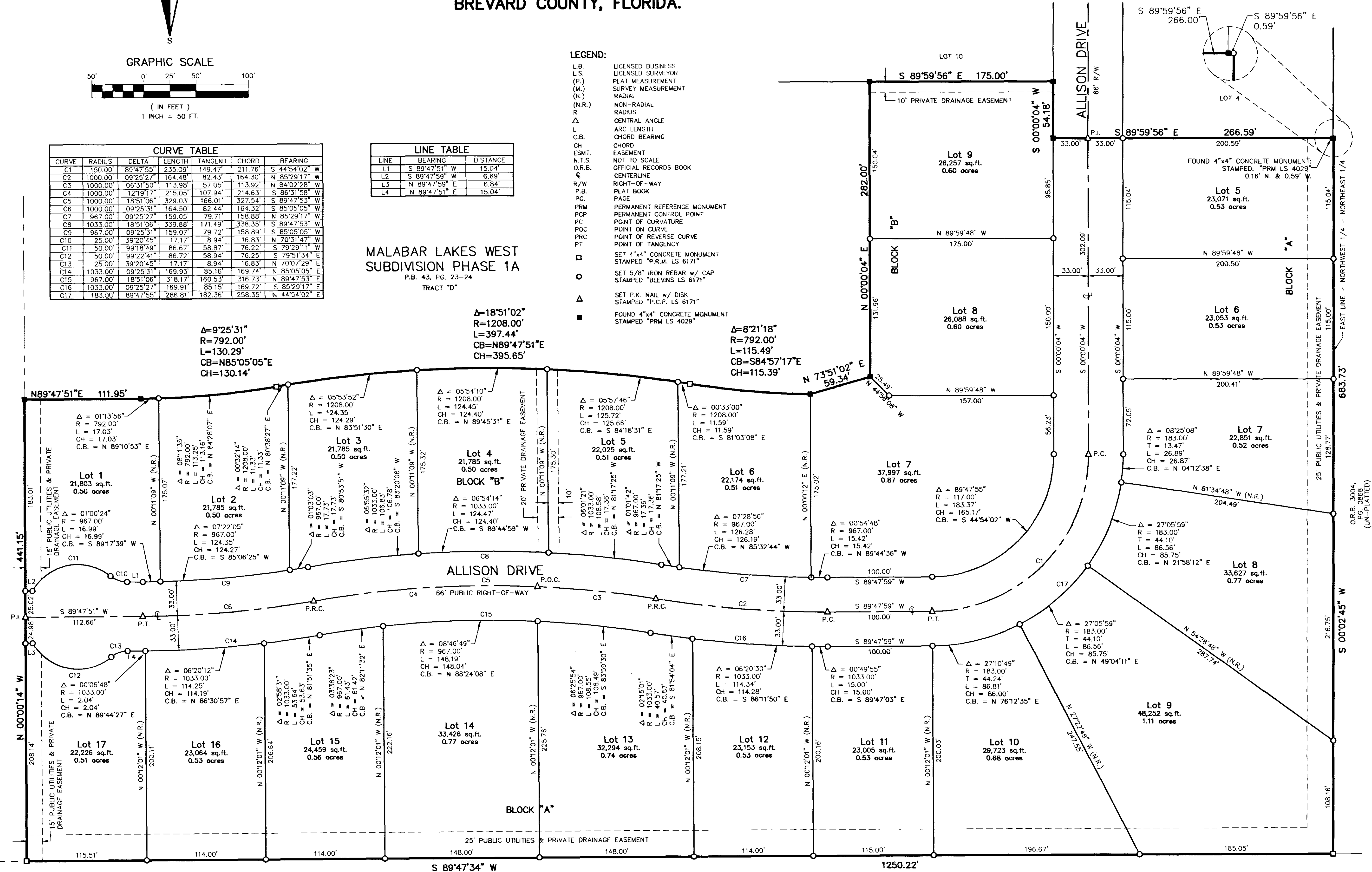
CURVE	RADIUS	DELTA	LENGTH	TANGENT	CHORD	BEARING
C1	150.00'	89°47'55"	235.09'	149.47'	211.76'	S 44°54'02" W
C2	1000.00'	09°25'27"	164.48'	82.43'	164.30'	N 85°29'17" W
C3	1000.00'	06°31'50"	113.98'	57.05'	113.92'	S 84°02'28" W
C4	1000.00'	12°19'17"	215.05'	107.94'	214.63'	S 86°31'58" W
C5	1000.00'	18°51'06"	329.03'	166.01'	327.54'	S 89°47'53" W
C6	1000.00'	09°25'31"	164.50'	82.44'	164.32'	S 85°05'05" W
C7	967.00'	09°25'27"	159.05'	79.71'	158.88'	N 85°29'17" W
C8	1033.00'	18°51'06"	339.88'	171.49'	338.35'	S 89°47'53" W
C9	967.00'	09°25'31"	159.07'	79.72'	158.89'	S 85°05'05" W
C10	25.00'	39°20'45"	17.17'	8.94'	16.83'	N 70°31'47" W
C11	50.00'	99°18'49"	86.67'	58.87'	76.22'	S 79°29'11" W
C12	50.00'	99°22'41"	86.72'	58.94'	76.25'	S 79°51'34" E
C13	25.00'	39°20'45"	17.17'	8.94'	16.83'	N 70°07'29" E
C14	1033.00'	09°25'31"	169.93'	85.16'	169.74'	N 85°05'05" E
C15	967.00'	18°51'06"	318.17'	160.53'	316.73'	N 89°47'53" E
C16	1033.00'	09°25'27"	169.91'	85.15'	169.72'	S 85°29'17" E
C17	183.00'	89°47'55"	286.81'	182.36'	258.35'	N 44°54'02" E

LINE	BEARING	DISTANCE
L1	S 89°47'51" W	15.04'
L2	S 89°47'59" W	6.69'
L3	N 89°47'59" E	15.04'
L4	N 89°47'51" E	15.04'

MALABAR LAKES WEST
SUBDIVISION PHASE 1A
P.B. 43, PG. 23-24
TRACT "D"

LEGEND:

- L.B. LICENSED BUSINESS
- L.S. LICENSED SURVEYOR
- (P.) PLAT MEASUREMENT
- (M.) SURVEY MEASUREMENT
- (R.) RADIAL
- (N.R.) NON-RADIAL
- R RADIUS
- Δ CENTRAL ANGLE
- L ARC LENGTH
- C.B. CHORD BEARING
- CH CHORD
- ESMT. EASEMENT
- N.T.S. NOT TO SCALE
- O.R.B. OFFICIAL RECORDS BOOK
- CENTERLINE
- R/W RIGHT-OF-WAY
- P.B. PLAT BOOK
- PG. PAGE
- PRM PERMANENT REFERENCE MONUMENT
- PCP PERMANENT CONTROL POINT
- PC POINT OF CURVATURE
- POC POINT ON CURVE
- PRC POINT OF REVERSE CURVE
- PT POINT OF TANGENCY
- SET 4"x4" CONCRETE MONUMENT STAMPED "P.R.M. LS 6171"
- SET 5/8" IRON REBAR w/ CAP STAMPED "BLEVINS LS 6171"
- ▲ SET P.K. NAIL w/ DISK STAMPED "P.C.P. LS 6171"
- FOUND 4"x4" CONCRETE MONUMENT STAMPED "PRM LS 4029"



O.R.B. 1806,
P.C. 0840
(UN-PLATTED)

SURVEY PREPARED BY:

Donald E. Blevins
Land Surveying, Inc.

145 CARRIGAN BLVD.
MERRITT ISLAND, FLORIDA 32952
Office: (321) 452-3339
Fax: (321) 452-2398
e-mail: blevins@blevinssurveying.com