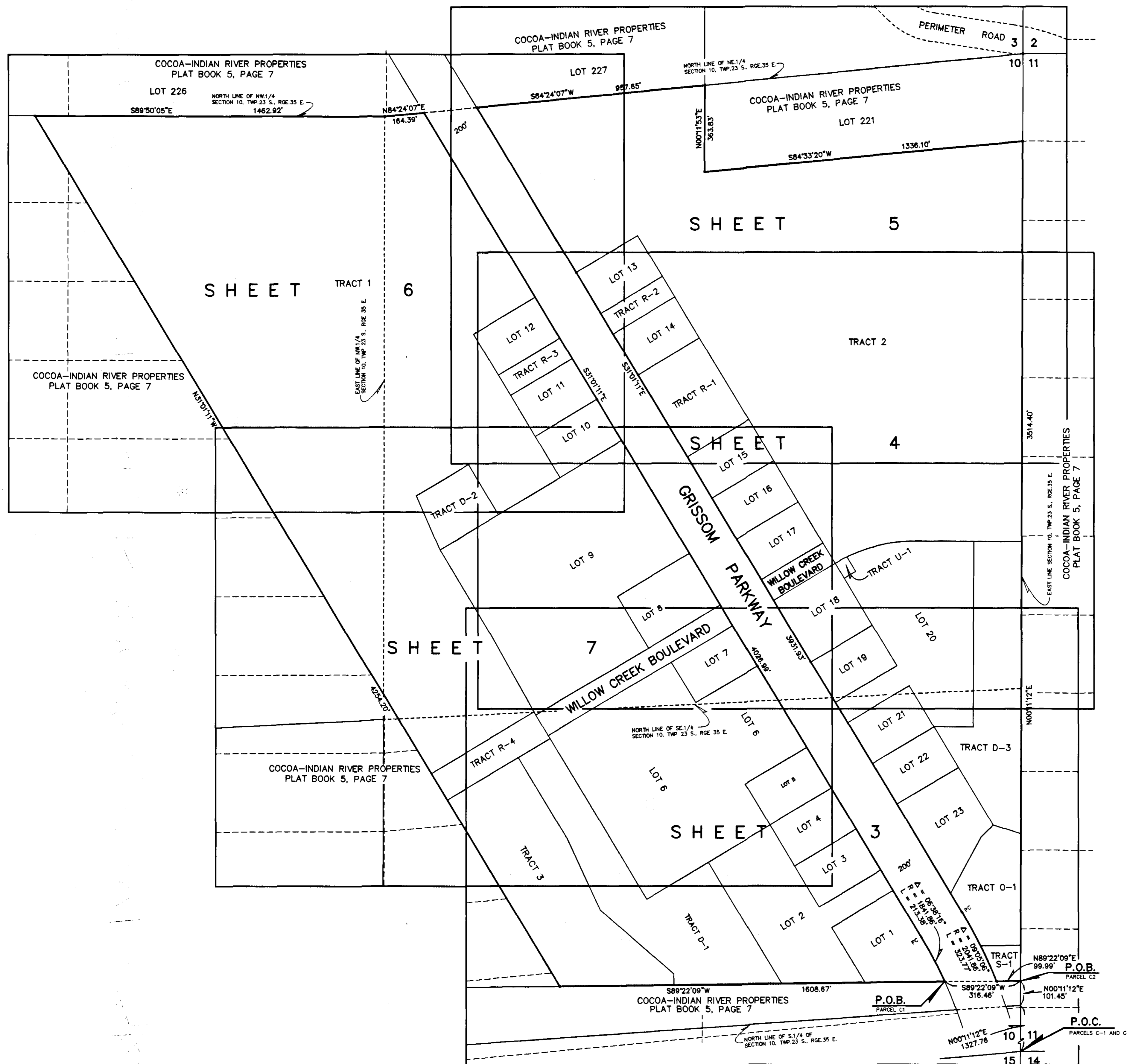
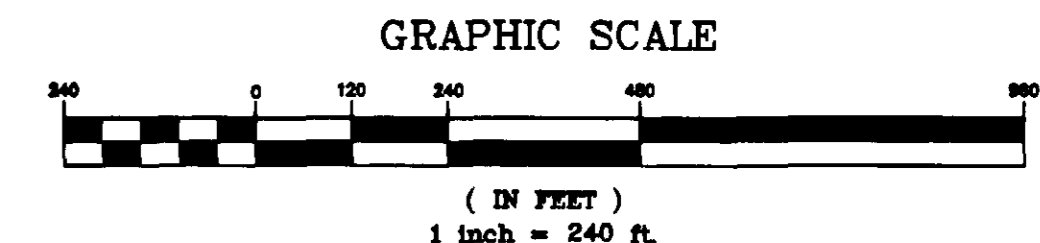


WILLOW CREEK COMMERCIAL CENTER - PHASE I

A REPLAT OF LOTS 198, 212, 213 AND 220, TOGETHER WITH A PART OF LOTS 179, 180, 181, 182, 187, 188, 189, 190, 194, 195, 196, 197, 199, 202, 203, 204, 205, 206, 207, 210, 211, 214, 215, 218, 219, 222, 223 AND 224 AS SHOWN ON THE PLAT OF COCOA - INDIAN RIVER PROPERTIES AS RECORDED IN PLAT BOOK 5, PAGE 7 OF THE PUBLIC RECORDS OF BREVARD COUNTY, FLORIDA AND LYING IN SECTION 10, TOWNSHIP 23 SOUTH, RANGE 35 EAST, THE CITY OF TITUSVILLE, BREVARD COUNTY, FLORIDA.



KEY MAP



PREPARED BY:
Honeycutt & Associates, Inc.
ENGINEERS • SURVEYORS • PLANNERS
5195 South Washington Avenue • Titusville, FL 32780
(407) 287-6233 Fax (407) 289-7847
CERTIFICATE OF AUTHORIZATION NO. LB 6762