

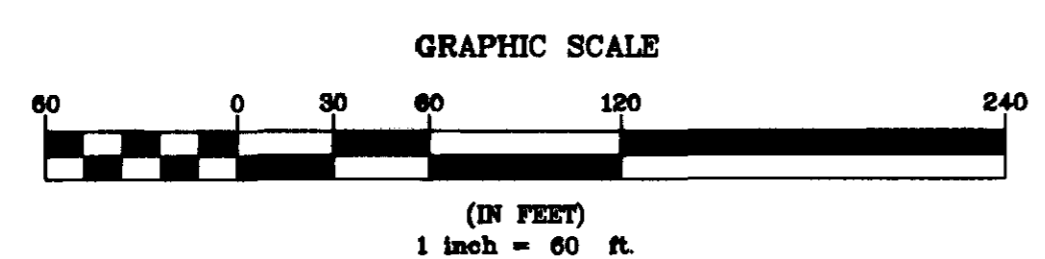
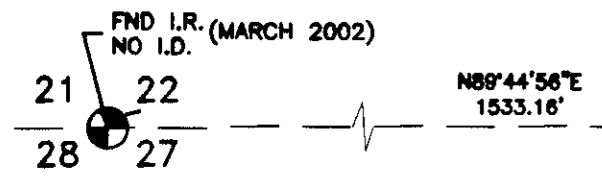
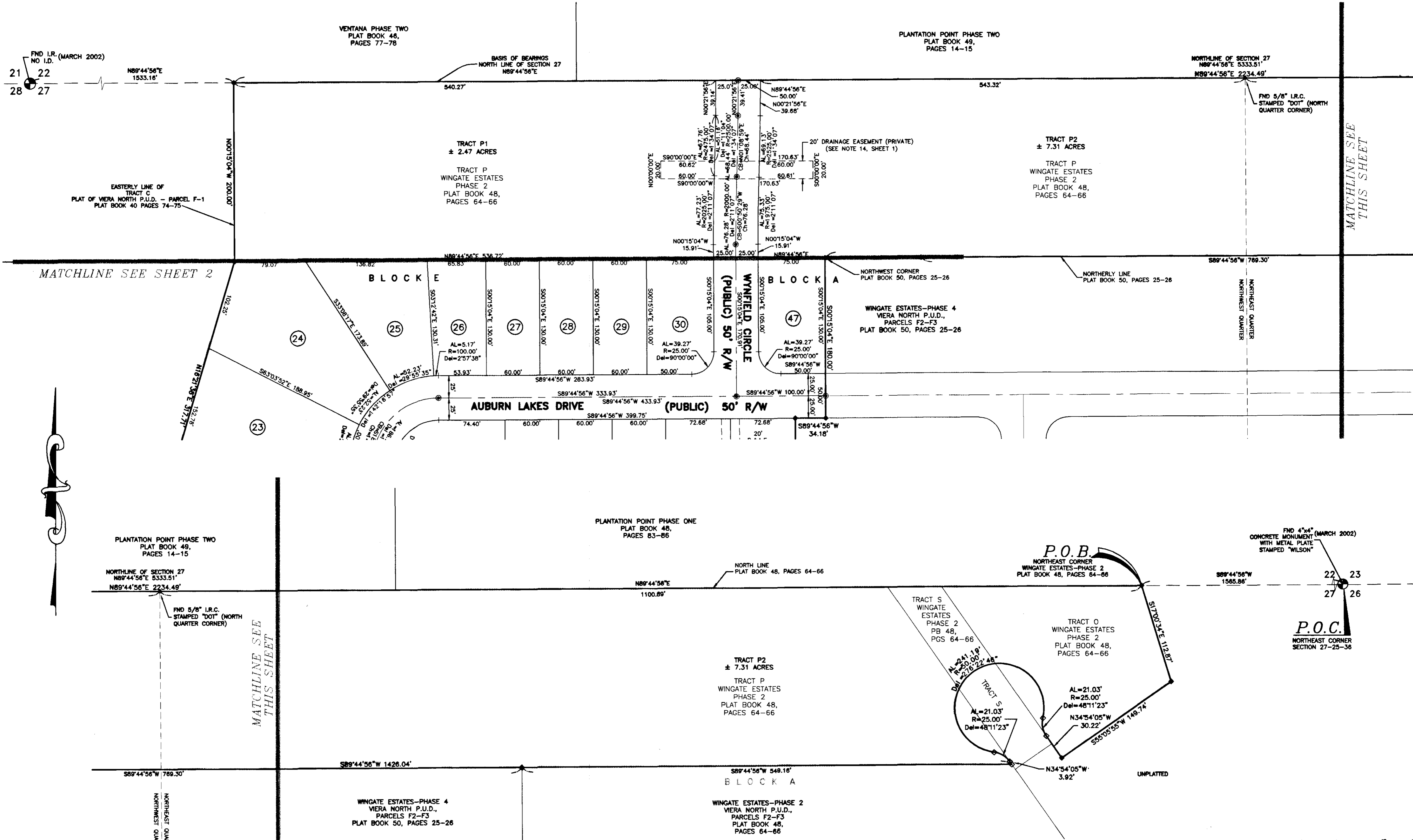
# WINGATE ESTATES – PHASE FIVE

## VIERA NORTH P.U.D., PARCELS F2-F3

### SECTION 27, TOWNSHIP 25 SOUTH, RANGE 36 EAST

#### BREVARD COUNTY, FLORIDA

AND A REPLAT OF PORTIONS TRACT P, TRACT S AND TRACT O  
WINGATE ESTATES – PHASE TWO AS RECORDED IN  
PLAT BOOK 48, PAGES 64-66 PUBLIC RECORDS  
OF BREVARD COUNTY, FLORIDA



- LEGEND**
- PERMANENT REFERENCE MONUMENT-SET (4"x4" CONCRETE MARKER WITH METAL DISK STAMPED P.R.M. - LS3913)
  - PERMANENT REFERENCE MONUMENT-FOUND (4"x4" CONCRETE MARKER WITH METAL DISK STAMPED P.R.M. - LS3913)
  - PERMANENT CONTROL POINT (METAL MARKER AND METAL DISK STAMPED P.C.P. - LS3913)
  - 1/2" IRON ROD (3913)
  - ⊙ ALL LOT AND TRACT CORNERS
  - AL = ARC LENGTH OF CURVE
  - Tan = TANGENT
  - R = RADIUS OF CURVE
  - Del = CENTRAL ANGLE OF CURVE (DELTA)
  - Ch = CHORD LENGTH OF CURVE
  - ChB = CHORD BEARING OF CURVE
  - RB = RADIAL BEARING
  - (NR) = NON RADIAL LINE
  - I.R. = IRON ROD
  - I.R.C. = IRON ROD AND CAP
- P.U. & D.E. = PUBLIC UTILITY & DRAINAGE EASEMENT (WAL 2-2-04)**
- P.U.D. = PLANNED UNIT DEVELOPMENT
  - P.O.B. = POINT OF BEGINNING
  - P.O.C. = POINT OF COMMENCEMENT
  - P.C. = POINT OF CURVATURE
  - PRC = POINT OF REVERSE CURVATURE
  - PI = POINT OF INTERSECTION
  - PT = POINT OF TANGENCY
  - CL = CURVE TABLE LABEL
  - LL = LINE TABLE LABEL
  - FL = FOUND
  - (TYP) = TYPICAL
  - R/W = RIGHT OF WAY
  - US&AE = UTILITY, SIDEWALK & UTILITY EASEMENT
  - DE = DRAINAGE EASEMENT
  - UE = UTILITY EASEMENT
  - ESMT. = EASEMENT
  - D.&A.E. = DRAINAGE AND ACCESS EASEMENT (PRIVATE)
  - ORB = OFFICIAL RECORD BOOK
  - PB = PLAT BOOK
  - PGS = PAGES
  - ⊕ = CENTERLINE

- THIS PLAT PREPARED BY -

**B.S.E. CONSULTANTS, INC.**  
CONSULTING - ENGINEERING - LAND SURVEYING  
312 SOUTH HARBOR CITY BOULEVARD, SUITE 4  
MELBOURNE, FLORIDA PHONE: (321) 725-3674 FAX: (321) 723-1156  
CERTIFICATE OF BUSINESS AUTHORIZATION: 4895  
CERTIFICATE OF LAND SURVEYING BUSINESS AUTHORIZATION: LB0004805

NOTICE: THIS PLAT, AS RECORDED IN ITS GRAPHIC FORM, IS THE OFFICIAL DEPICTION OF THE SUBDIVIDED LANDS DESCRIBED HEREIN AND WILL IN NO CIRCUMSTANCES BE SUPPLANTED IN AUTHORITY BY ANY OTHER GRAPHIC OR DIGITAL FORM OF THE PLAT. THERE MAY BE ADDITIONAL RESTRICTIONS THAT ARE NOT RECORDED ON THIS PLAT THAT MAY BE FOUND IN THE PUBLIC RECORDS OF THIS COUNTY.