

Auburn Lakes Subdivision Phase Four

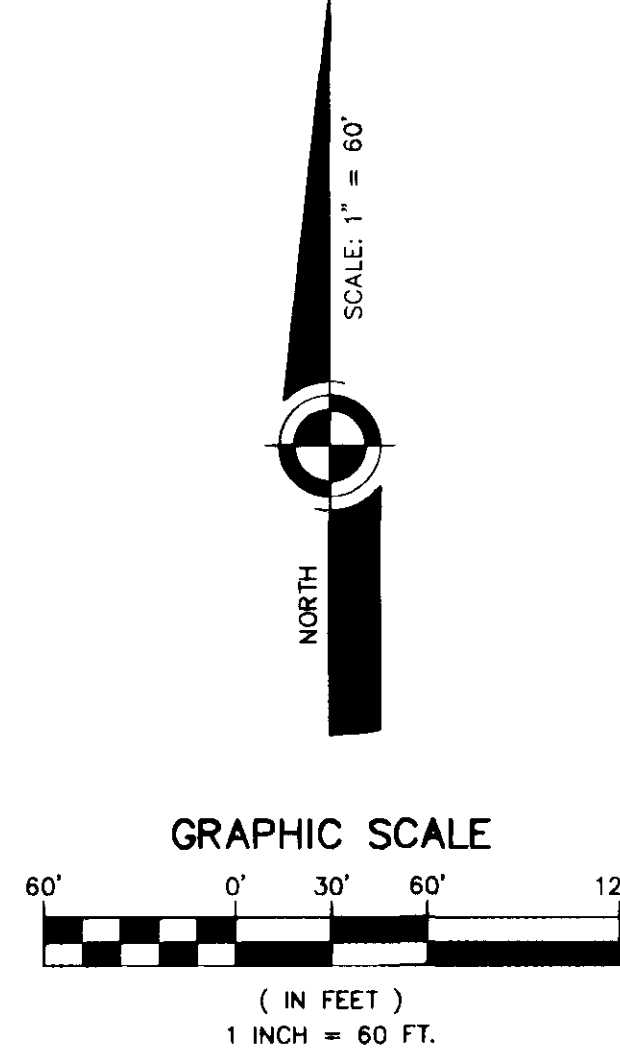
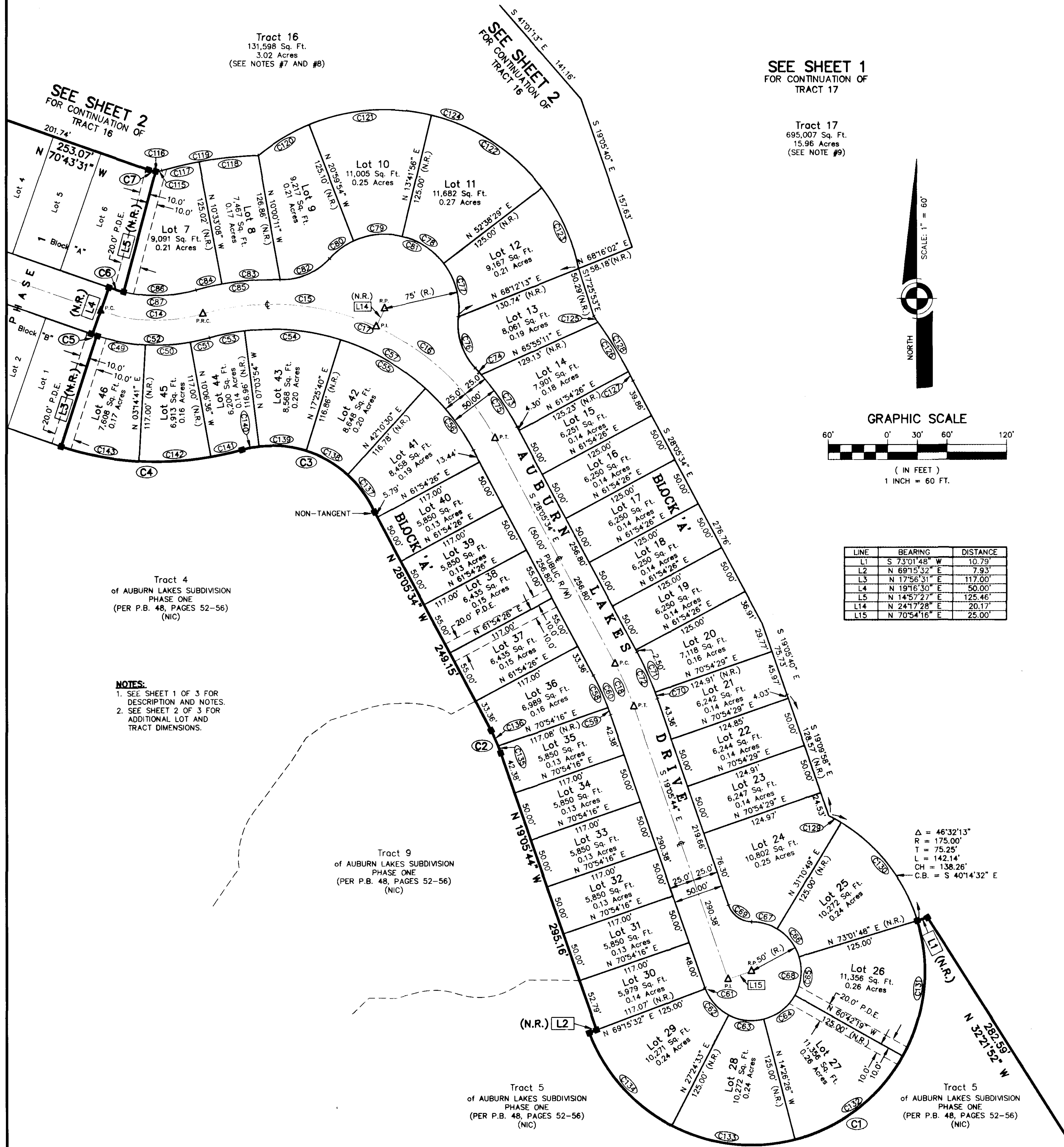
Viera North P.U.D. Tracts F4 and F5

A SUBDIVISION LYING IN SECTION 27, TOWNSHIP 25 SOUTH, RANGE 36 EAST OF BREVARD COUNTY, FLORIDA.

Tract 16
131,598 Sq. Ft.
3.02 Acres
(SEE NOTES #7 AND #8)

SEE SHEET 1
FOR CONTINUATION OF
TRACT 17

Tract 17
695,007 Sq. Ft.
15.96 Acres
(SEE NOTE #9)



LINE	BEARING	DISTANCE
L1	S 73°01'48" W	10.79'
L2	N 69°15'32" E	7.93'
L3	N 17°56'31" E	117.00'
L4	N 19°16'30" E	50.00'
L5	N 14°57'21" E	125.46'
L14	N 24°17'28" E	20.17'
L15	N 70°54'16" E	25.00'

CURVE	RADIUS	DELTA	LENGTH	TANGENT	CHORD	BEARING
C1	175.00	176°14'12"	538.28	5326.62	349.81	S 71°08'40" W
C2	158.00	08°59'49"	24.81	12.43	24.79	N 23°35'39" W
C3	113.00	81°47'18"	161.30	97.86	147.95	N 65°07'57" W
C4	312.00	33°58'17"	184.99	95.30	182.29	N 89°02'28" W
C5	195.00	01°19'43"	4.52	2.26	4.52	N 71°23'23" W
C6	145.00	06°08'05"	15.53	7.77	15.52	S 73°47'34" E
C7	20.00	17°36'40"	6.15	3.10	6.12	N 79°31'51" W
C14	170.00	35°15'58"	104.64	54.04	102.99	S 88°21'30" E
C15	255.00	40°19'38"	179.48	93.64	175.80	S 85°49'40" E
C16	255.00	37°34'18"	167.22	86.74	164.24	S 46°52'42" E
C17	255.00	77°53'56"	346.70	206.12	320.60	S 67°02'31" E
C18	300.00	08°59'49"	47.11	23.60	47.06	S 23°35'39" E
C49	195.00	14°41'52"	50.02	25.15	49.89	S 79°24'10" E
C50	195.00	13°21'20"	45.45	22.83	45.35	N 86°34'14" E
C51	195.00	05°53'04"	20.03	10.02	20.02	N 76°57'02" E
C52	195.00	35°15'58"	120.02	61.98	118.14	S 88°21'30" E
C53	230.00	08°59'17"	36.08	18.08	36.04	N 78°30'09" E
C54	230.00	24°28'56"	98.28	49.90	97.53	S 84°45'45" E
C55	230.00	24°43'38"	99.26	50.42	98.49	S 60°09'28" E
C56	230.00	19°42'06"	79.09	39.94	78.70	S 37°56'36" E
C57	230.00	77°53'56"	312.71	185.91	289.17	S 67°02'31" E
C58	275.00	07°24'31"	35.56	17.80	35.53	S 24°23'18" E
C59	275.00	01°35'18"	7.62	3.81	7.62	S 19°53'23" E
C60	275.00	08°59'49"	43.18	21.64	43.14	S 23°35'39" E
C61	50.00	01°33'55"	1.42	0.71	1.42	S 19°54'41" E
C62	50.00	41°50'49"	36.52	19.12	35.71	S 41°59'03" E
C63	50.00	41°51'19"	36.53	19.12	35.72	S 83°30'08" E
C64	50.00	46°16'38"	40.38	21.37	39.30	N 52°25'53" E
C65	50.00	46°16'34"	40.38	21.37	39.29	N 06°09'18" E
C66	50.00	41°51'11"	36.52	19.12	35.72	N 37°54'35" W
C67	50.00	30°47'18"	26.87	13.77	26.55	N 74°13'49" W
C68	50.00	250°31'44"	218.63	-170.71	81.65	N 35°38'24" E
C69	25.00	70°31'44"	30.77	17.68	28.87	N 54°21'36" W
C70	325.00	01°10'12"	6.64	3.32	6.64	N 19°40'50" W
C71	325.00	07°49'37"	44.40	22.23	44.36	N 24°10'45" W
C72	325.00	08°59'49"	51.03	25.57	50.98	N 23°35'39" W
C73	280.00	13°00'18"	63.55	31.91	63.42	N 34°35'42" W
C74	280.00	01°51'26"	9.08	4.54	9.08	N 42°01'34" W
C75	280.00	14°51'44"	72.63	36.52	72.43	N 35°31'25" W
C76	65.00	49°22'01"	56.01	29.87	54.29	N 18°16'17" W
C77	75.00	43°46'53"	57.31	30.14	55.93	N 15°28'43" W
C78	75.00	38°56'52"	60.98	26.52	50.00	N 65°50'25" W
C79	75.00	38°20'50"	50.20	26.08	49.26	N 84°30'54" W
C80	75.00	23°05'19"	30.22	15.32	30.02	S 53°47'49" W
C81	75.00	144°09'34"	188.70	231.92	142.72	N 65°40'03" W
C82	65.00	49°22'01"	56.01	29.87	54.29	S 66°56'11" W
C83	280.00	12°07'15"	59.23	29.73	59.12	S 85°33'34" W
C84	280.00	05°29'26"	26.83	13.43	26.82	S 76°45'14" W
C85	280.00	17°36'41"	86.07	43.37	85.73	S 82°48'51" W
C86	145.00	29°07'53"	73.72	37.68	72.93	S 88°34'27" W
C87	145.00	35°15'58"	89.25	46.09	87.85	N 88°21'31" W
C115	20.00	17°41'25"	6.18	3.11	6.15	N 82°49'06" E
C116	20.00	35°18'05"	12.32	6.36	12.13	S 88°22'34" E
C117	405.00	05°28'23"	38.69	19.36	38.67	N 76°42'35" E
C118	405.00	08°31'12"	60.22	30.17	60.17	N 83°42'23" E
C119	405.00	13°59'35"	98.91	49.70	98.67	N 80°58'11" E
C120	200.00	17°14'06"	60.18	30.31	59.93	N 59°00'44" E
C121	200.00	36°03'55"	125.89	65.11	123.82	N 85°39'45" E
C122	200.00	38°56'52"	135.93	70.71	133.33	S 66°50'02" E
C123	200.00	25°46'35"	89.98	45.76	89.22	S 24°28'28" W
C124	200.00	118°01'07"	411.96	332.98	342.90	S 70°35'45" E
C125	405.00	01°05'01"	7.66	3.83	7.66	S 36°18'03" E
C126	405.00	08°16'00"	58.43	29.27	58.38	S 31°37'33" E
C127	405.00	01°26'07"	10.15	5.07	10.15	S 26°46'29" E
C128	405.00	10°47'08"	76.24	38.23	76.13	S 31°26'59" E
C129	175.00	04°41'11"	14.31	7.16	14.31	S 61°10'04" E
C130	175.00	41°51'02"	127.83	66.91	125.00	S 37°53'57" E
C131	175.00	46°16'05"	141.32	74.77	137.51	S 06°09'37" W
C132	175.00	46°16'06"	141.32	74.77	137.51	S 52°25'42" W
C133	175.00	41°51'05"	127.83	66.92	125.00	N 83°30'43" W
C134	175.00	41°50'56"	127.82	66.91	125.00	N 41°39'42" W
C135	158.00	02°45'55"	7.63	3.81	7.63	N 20°28'42" W
C136	158.00	06°13'54"	17.18	8.60	17.18	N 24°58'37" W
C137	113.00	23°16'58"	46.53	23.60	46.20	N 36°02'07" W
C138	113.00	24°44'49"	48.81	24.79	48.43	N 60°12'20" W
C139	113.00	24°29'29"	48.30	24.53	47.94	N 84°49'29" W
C140	113.00	08°57'22"	17.66	8.85	17.65	S 78°27'05" W
C141	312.00	05°55'07"	32.23	16.13	32.21	S 76°55'57" W
C142	312.00	13°21'19"	72.72	36.53	72.56	S 86°34'10" W
C143	312.00	14°41'51"	80.03	40.24	79.82	N 79°24'15" W

NOTES:
1. SEE SHEET 1 OF 3 FOR DESCRIPTION AND NOTES.
2. SEE SHEET 2 OF 3 FOR ADDITIONAL LOT AND TRACT DIMENSIONS.

Tract 9
of AUBURN LAKES SUBDIVISION
PHASE ONE
(PER P.B. 48, PAGES 52-56)
(NIC)

Tract 5
of AUBURN LAKES SUBDIVISION
PHASE ONE
(PER P.B. 48, PAGES 52-56)
(NIC)

Δ = 46°32'13"
R = 175.00'
T = 75.25'
L = 142.14'
CH = 138.26'
C.B. = S 40°14'32" E

LEGEND:

R	RADIUS	(NIC)	NOT INCLUDED
Δ	CENTRAL ANGLE	(R.)	RADIAL
T	TANGENT	(N.R.)	NON-RADIAL
L	ARC LENGTH	¢	CENTERLINE
CH	CHORD	P.C.	POINT-OF-CURVATURE
C.B.	CHORD BEARING	P.I.	POINT-OF-INTERSECTION
CXX	CURVE NUMBER	P.T.	POINT-OF-TANGENCY
LXX	LINE NUMBER	R.P.	RADIUS POINT
P.D.E.	PUBLIC DRAINAGE EASEMENT	P.R.C.	POINT-OF-REVERSE CURVATURE
P.B.	PLAT BOOK		
R/W	RIGHT-OF-WAY		

Bussen-Mayer Engineering Group

100 PARNELL STREET • MERRITT ISLAND, FLORIDA 32953
PH. NO.: (321) 453-0010