

SONOMA SOUTH - PHASE 4

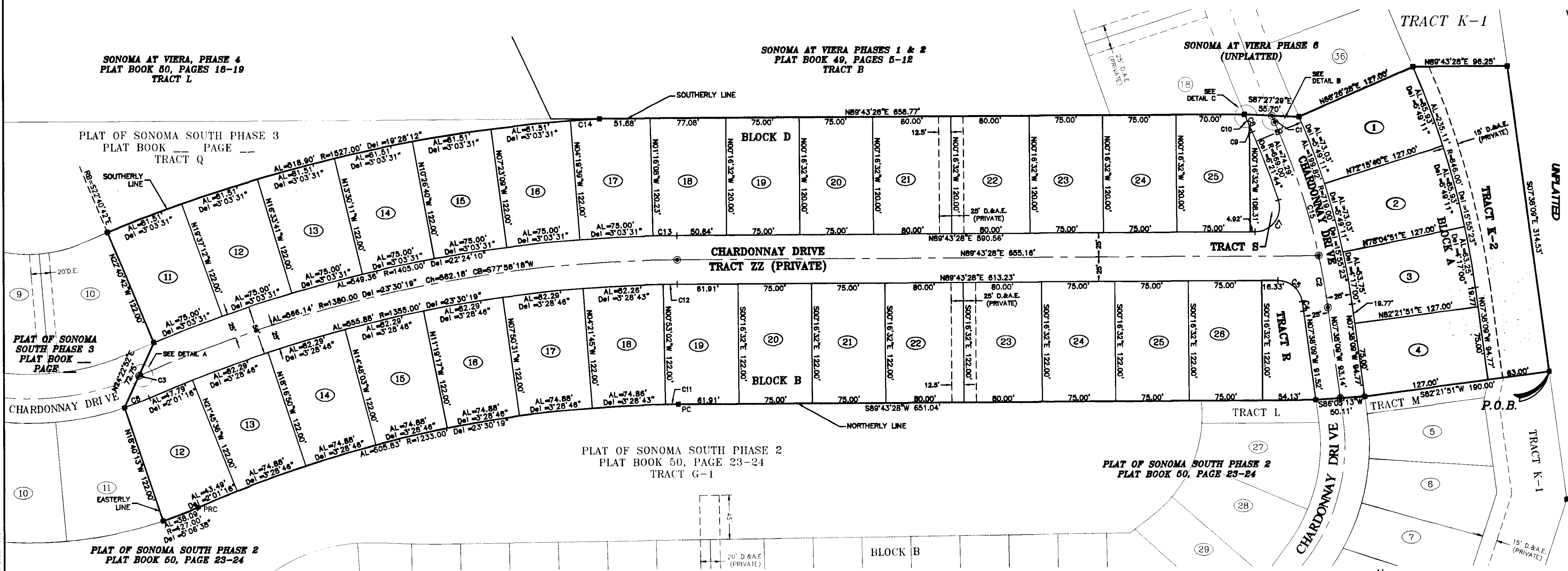
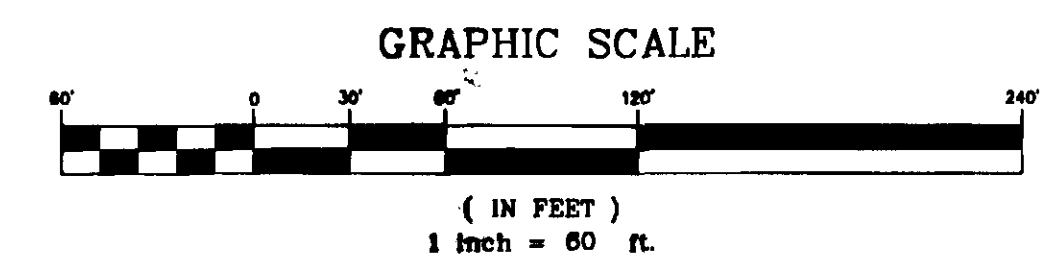
VIERA CENTRAL P.U.D. - A PORTION OF PARCEL 1

SECTION 33, TOWNSHIP 25 SOUTH, RANGE 36 EAST

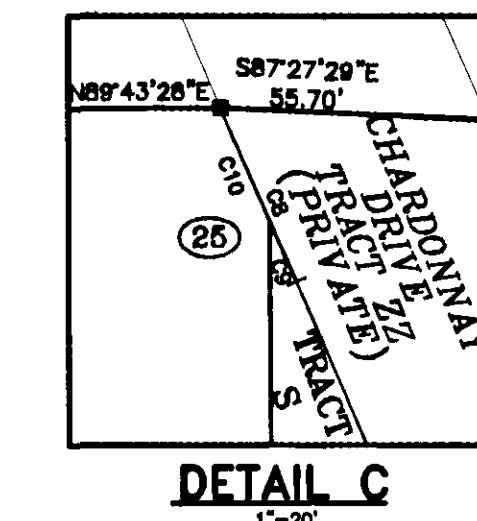
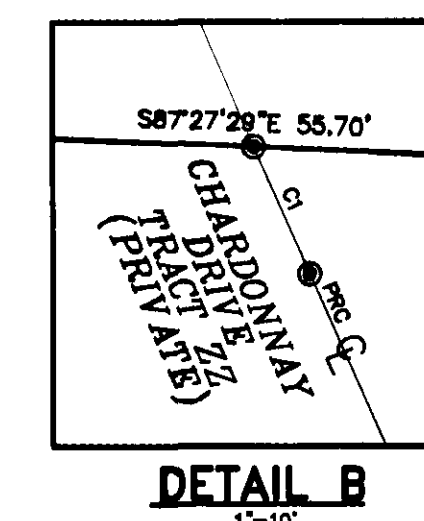
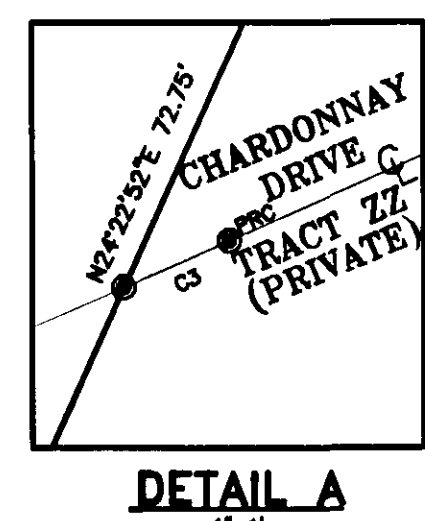
VIERA, BREVARD COUNTY, FLORIDA

PLAT BOOK 21, PAGE 2
SHEET 2 OF 2
SECTION 33, TWP. 25 South, RANGE 36 E.

| CURVE TABLE | | | | | |
|-------------|----------|---------|------------|---------------|---------|
| CURVE | RADIUS | LENGTH | DELTA | CHORD BEARING | CHORD |
| C1 | 1377.00' | 7.19' | 0°17'58" | S23°49'42"E | 7.19' |
| C2 | 694.00' | 53.80' | 4°26'30" | N09°51'24"W | 53.78' |
| C3 | 280.00' | 0.60' | 0°07'21" | N68°16'49"E | 0.60' |
| C4 | 689.00' | 9.90' | 0°50'52" | N08°03'35"W | 9.90' |
| C5 | 25.00' | 35.69' | 81°47'31" | N49°22'46"W | 32.73' |
| C6 | 305.00' | 27.21' | 5°06'39" | N68°46'28"E | 27.20' |
| C7 | 25.00' | 46.84' | 107°20'25" | N38°03'15"E | 40.28' |
| C8 | 1402.00' | 8.90' | 0°18'55" | S23°50'14"E | 8.90' |
| C9 | 1402.00' | 12.71' | 0°31'10" | S23°26'11"E | 12.71' |
| C10 | 1233.00' | 13.09' | 0°36'30" | S89°25'13"W | 13.09' |
| C11 | 1355.00' | 14.39' | 0°36'30" | S89°25'13"W | 14.39' |
| C12 | 1405.00' | 24.39' | 0°59'36" | S89°13'40"W | 24.36' |
| C13 | 1527.00' | 28.83' | 1°07'09" | S88°13'58"W | 28.83' |
| C14 | 694.00' | 197.95' | 18°20'32" | N15°48'25"W | 197.28' |



- LEGEND**
- - PERMANENT CONTROL POINT - SET (METAL MARKER WITH A METAL DISK STAMPED "P.C.P.-LS3913")
 - - PERMANENT REFERENCE MONUMENT - SET (4"x4" CONCRETE MARKER WITH METAL DISK STAMPED "P.R.M.-L.S. 3913")
 - - PERMANENT REFERENCE MONUMENT - FOUND (4"x4" CONCRETE MARKER MARKED "P.R.M.-LS3913")
 - AC - ACRES
 - AL - ARC LENGTH OF CURVE
 - R - RADIUS OF CURVE
 - DEL - CENTRAL ANGLE OF CURVE
 - CL - CHORD LENGTH OF CURVE
 - CB - CHORD BEARING OF CURVE
 - RB - RADIAL BEARING
 - (NR) - NON RADIAL LINE
 - P.O.B. - POINT OF BEGINNING
 - P.O.C. - POINT OF COMMENCEMENT
 - PC - POINT OF CURVATURE
 - PRC - POINT OF REVERSE CURVE
 - CT - CURVE TABLE LABEL
 - LT - LINE TABLE LABEL
 - R/W - RIGHT OF WAY
 - D.E. - DRAINAGE EASEMENT
 - U.E. - UTILITY EASEMENT
 - O.R.B. - OFFICIAL RECORD BOOK
 - D.&A.E. - DRAINAGE AND ACCESS EASEMENT



- THIS PLAT PREPARED BY -
B.S.E. CONSULTANTS, INC.
CONSULTING, ENGINEERING, LAND SURVEYING
312 S. Harbor City Blvd., Suite 4, Melbourne, Florida (321) 725-3674