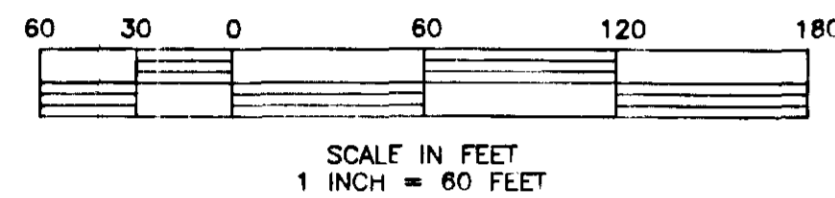
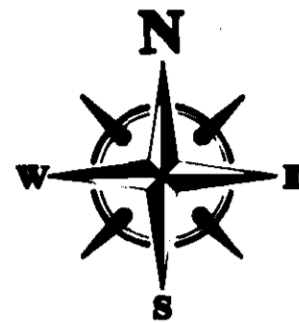


BROOKHAVEN

A PARCEL OF LAND LYING IN SECTION 27, TOWNSHIP 28 SOUTH, RANGE 37 EAST
 CITY OF PALM BAY, BREVARD COUNTY, FLORIDA
 BEING A REPLAT OF FLORIDA INDIAN RIVER LAND COMPANY SUBDIVISION
 PLAT BOOK 1, PAGE 164

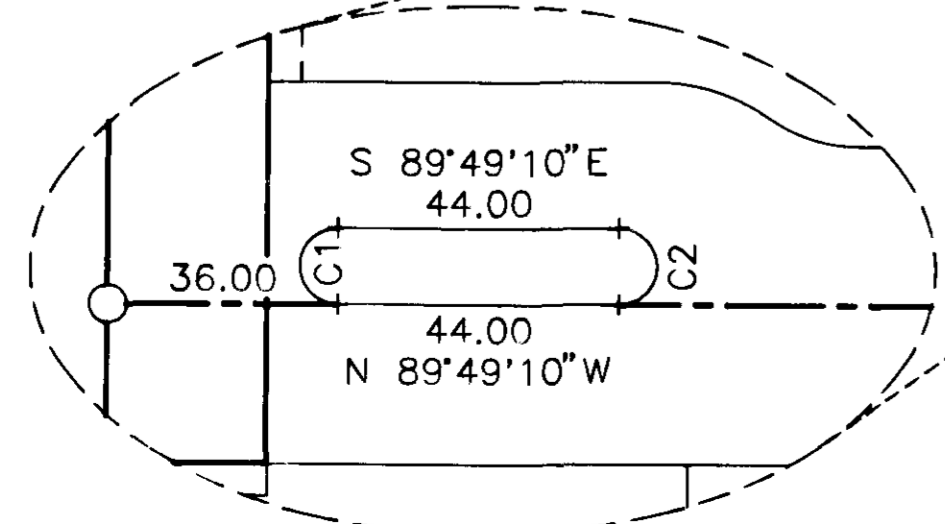


LEGEND:
 □ = 4" x 4" CONCRETE MONUMENT SET MARKED "PRM LB 642F"
 ○ = 1/2" IRON ROD SET MARKED "LR 642F"
 △ = NAIL & DISK SET MARKED "PCP LB 642F"
 L = LINE
 C = CURVE

CURVE DATA				
CURVE	DELTA	RADIUS	ARC	DISTANCE
1	180°00'00"	6.00'	18.85'	12.00'
2	180°00'00"	6.00'	18.85'	12.00'
3	35°05'48"	30.00'	18.38'	18.09'
4	35°05'48"	25.00'	15.31'	15.08'
5	89°44'40"	25.00'	39.16'	35.28'
6	90°15'20"	25.00'	39.38'	35.43'
7	11°55'32"	75.00'	15.61'	15.58'
8	45°50'04"	75.00'	60.00'	58.41'
9	32°17'05"	75.00'	42.26'	41.70'
10	90°02'40"	50.00'	78.58'	70.74'
11	90°02'40"	25.00'	39.29'	35.37'
12	11°40'19"	75.00'	15.28'	15.25'
13	42°02'55"	75.00'	57.66'	56.25'
14	34°12'25"	75.00'	44.78'	44.11'
15	89°55'39"	50.00'	78.48'	70.67'
16	89°55'39"	25.00'	39.24'	35.33'
17	89°48'21"	25.00'	39.17'	35.29'
18	89°48'21"	50.00'	78.34'	70.57'
19	07°21'12"	75.00'	9.63'	9.62'
20	45°57'24"	75.00'	60.18'	58.56'
21	36°27'45"	75.00'	47.73'	46.92'

LINE DATA		
LINE	BEARING	DISTANCE
1	N 89°49'10"W	21.54'
2	N 89°49'10"W	15.04'
3	S 89°31'10"E	19.98'
4	S 00°24'29"W	16.76'
5	S 00°24'29"W	12.97'
6	S 89°40'10"E	21.48'

DETAIL OF TRACT A
 SCALE: 1" = 30'



SMITH SURVEYING & MAPPING, INC.

4960 UPSCOMB STREET N.E. SUITE 9 PALM BAY, FLORIDA 32916
 Brevard(321)724-2940 Indian River(888)589-5228 Fax(321)951-4979
 DRAWING NUMBER: FA-PG2.UWG
 DRAWN BY: R. TODD KELSEE

