

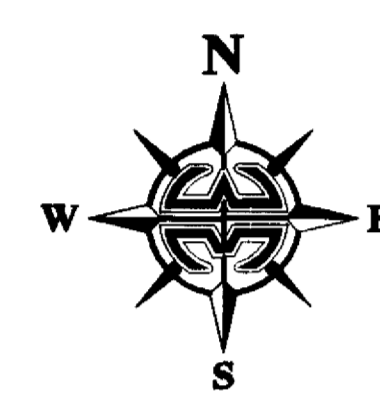
PREPARED BY:  
**WM WILLIAM MOTT LAND SURVEYING INC.**  
 SATELLITE BEACH PROFESSIONAL CENTER  
 1275 SOUTH PATRICK DRIVE, SUITE H  
 SATELLITE BEACH, FLORIDA, 32937-3955  
 PHONE (321) 773-4323  
 PROJECT NUMBER: 2010568  
 DRAWING NAME: GRAND-HAVEN-PH7.DWG  
 DRAWN BY: EDWARD A. WHITE  
 CHECKED BY: DANIEL D. GARNER P.S.M. 6189

# GRAND HAVEN PHASE SEVEN

A REPLAT OF A PORTION OF TRACT 3 OF GRAND HAVEN PHASE ONE PLAT BOOK 46, PAGES 55-67  
 SECTION 26, TOWNSHIP 26 SOUTH, RANGE 36 EAST, BREVARD COUNTY, FLORIDA

NOTICE: THIS PLAT, AS RECORDED IN ITS GRAPHIC FORM, IS THE OFFICIAL DEPICTION OF THE SUBDIVIDED LANDS DESCRIBED HEREIN AND WILL IN NO CIRCUMSTANCES BE SUPPLANTED IN AUTHORITY BY ANY OTHER GRAPHIC OR DIGITAL FORM OF THE PLAT. THERE MAY BE ADDITIONAL RESTRICTIONS THAT ARE NOT RECORDED ON THIS PLAT THAT MAY BE FOUND IN THE PUBLIC RECORDS OF THIS COUNTY.

NOTE:  
 PRIOR TO THE RELEASE OF THE PERFORMANCE BOND,  
 ALL LOT CORNER MONUMENTATION WILL BE SET AS  
 1/2" IRON RODS WITH CAPS MARKED "LB 3608".



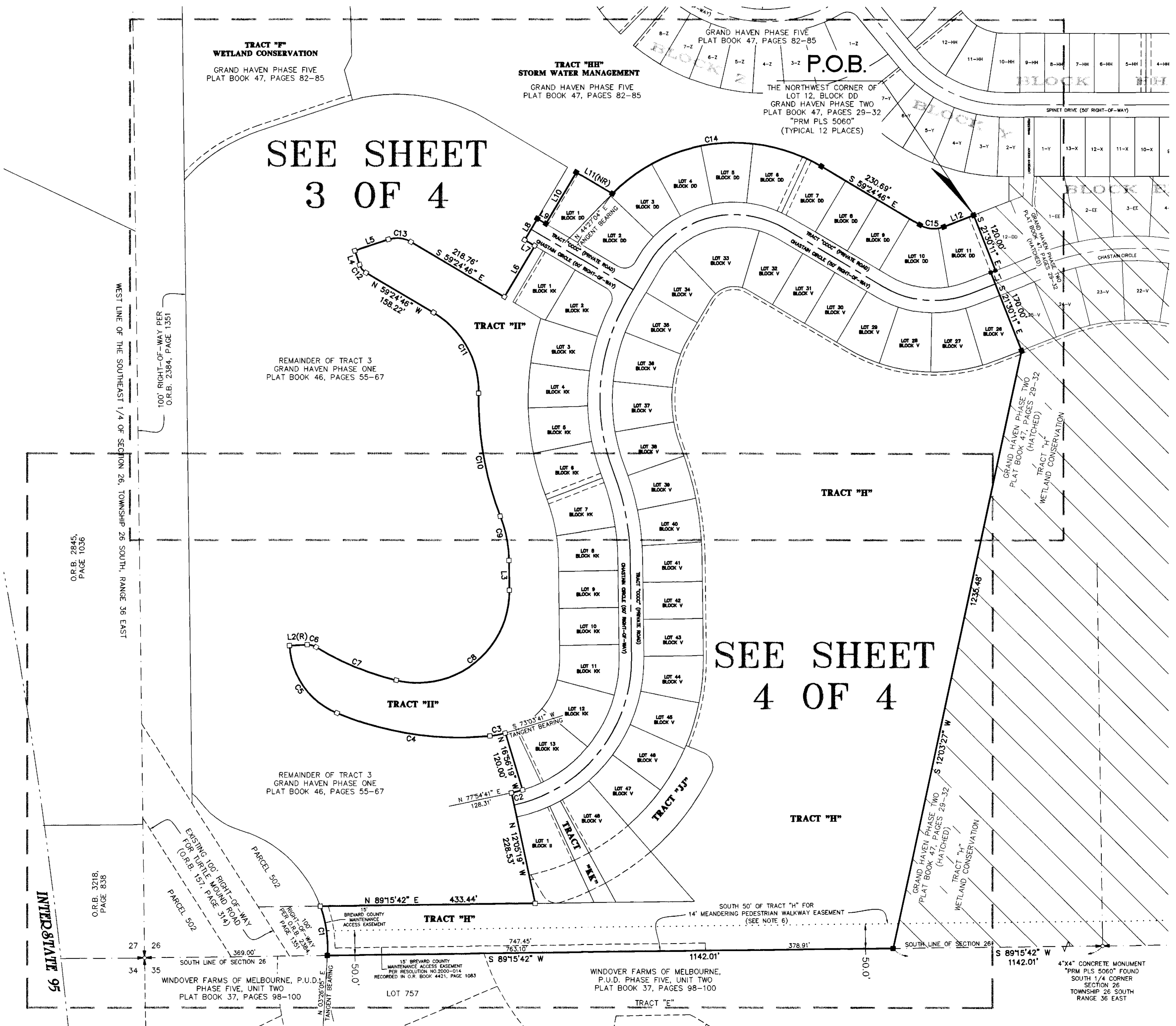
GRAPHIC SCALE

( IN FEET )  
 1 inch = 100 ft.

LINE	LENGTH	BEARING
L1	10.52'	S 68°29'49" W
L2(R)	35.82'	N 87°21'57" E
L3	60.29'	N 00°43'25" W
L4	30.00'	N 18°30'24" W
L5	71.51'	N 71°29'36" E
L6	120.00'	N 30°35'14" E
L7	23.27'	N 59°24'46" W
L8	50.00'	N 30°35'14" E
L9	20.00'	S 59°24'46" E
L10	120.00'	N 30°35'14" E
L11(NR)	85.05'	S 59°24'46" E
L12	64.80'	N 68°29'49" E

CURVE	RADIUS	DELTA	LENGTH	CHORD	CHORD BEARING
C1	250.00'	23°16'26"	101.55'	100.85'	N 08°12'07" W
C2	275.00'	4°51'00"	23.28'	23.27'	N 75°29'11" E
C3	155.00'	11°41'19"	31.62'	31.57'	S 78°54'20" W
C4	655.00'	27°33'32"	315.05'	312.02'	N 81°28'15" W
C5	155.00'	65°03'25"	176.00'	166.69'	N 35°09'46" W
C6	31.68'	34°13'57"	18.93'	18.65'	S 75°31'05" E
C7	555.00'	18°09'28"	175.89'	175.15'	S 67°28'50" E
C8	185.00'	104°09'51"	336.33'	291.89'	N 51°21'30" E
C9	255.00'	20°33'31"	91.50'	91.01'	N 11°00'10" W
C10	645.00'	22°30'09"	253.32'	251.89'	N 10°01'51" W
C11	185.00'	60°37'59"	195.78'	186.77'	N 29°05'46" W
C12	30.00'	40°54'22"	21.42'	20.97'	N 38°57'35" W
C13	55.00'	49°05'38"	47.13'	45.70'	S 83°57'35" E
C14	345.00'	76°08'10"	458.45'	425.45'	N 82°31'09" E
C15	55.00'	52°05'25"	50.00'	48.30'	N 85°27'28" W

- LEGEND:**
- = 4"x4" CONCRETE MONUMENT WITH NAIL AND DISK MARKED "PRM PLS 5060" (SET)
  - = 4"x4" CONCRETE MONUMENT WITH NAIL AND DISK MARKED "PRM PLS 5060" (FOUND)
  - = NAIL AND DISK MARKED "PCP PLS 5060" (SET)
  - = NAIL AND DISK MARKED "PCP PLS 5060" (FOUND)
  - C## = CURVE NUMBER FOR CURVE TABLE
  - L## = LINE NUMBER FOR LINE TABLE
  - ESMT. = EASEMENT
  - PUADE = PUBLIC UTILITIES AND DRAINAGE EASEMENT
  - R/W = RIGHT-OF-WAY
  - (R) = RADIAL
  - (NR) = NON-RADIAL
  - P.B. = PLAT BOOK
  - P.C. = PAGE
  - POL = POINT-ON-LINE
  - P.O.C. = POINT-ON-CURVE
  - PI = POINT-OF-INTERSECTION
  - PT = POINT-OF-TANGENCY
  - PC = POINT-OF-CURVATURE
  - PRC = POINT-OF-REVERSE CURVATURE
  - PCC = POINT-OF-COMPOUND CURVATURE
  - P.O.B. = POINT-OF-BEGINNING
  - P.O.C. = POINT-OF-COMMENCEMENT
  - PRM = PERMANENT REFERENCE MONUMENT
  - PCP = PERMANENT CONTROL POINT
  - OR = OFFICIAL RECORDS
  - H.O.A. = HOME OWNERS ASSOCIATION
  - LB = LICENSED BUSINESS
  - PLS = PROFESSIONAL LAND SURVEYOR
  - PSM = PROFESSIONAL SURVEYOR AND MAPPER
  - R = RADIUS
  - D = DELTA
  - L = LENGTH
  - CD = CHORD DISTANCE
  - CB = CHORD BEARING
  - 00-A = LOT AND BLOCK DESIGNATION
  - O.R.B. = OFFICIAL RECORD BOOK



SEE SHEET  
3 OF 4

SEE SHEET  
4 OF 4

INTERSTATE 95

WEST LINE OF THE SOUTHEAST 1/4 OF SECTION 26, TOWNSHIP 26 SOUTH, RANGE 36 EAST

100' RIGHT-OF-WAY PER O.R.B. 2384, PAGE 1351

O.R.B. 2845, PAGE 1036

O.R.B. 3218, PAGE 838

WINDOVER FARMS OF MELBOURNE, P.U.D. PHASE FIVE, UNIT TWO PLAT BOOK 37, PAGES 98-100

LOT 757

WINDOVER FARMS OF MELBOURNE, P.U.D. PHASE FIVE, UNIT TWO PLAT BOOK 37, PAGES 98-100

4"x4" CONCRETE MONUMENT "PRM PLS 5060" FOUND SOUTH 1/4 CORNER SECTION 26 TOWNSHIP 26 SOUTH RANGE 36 EAST