

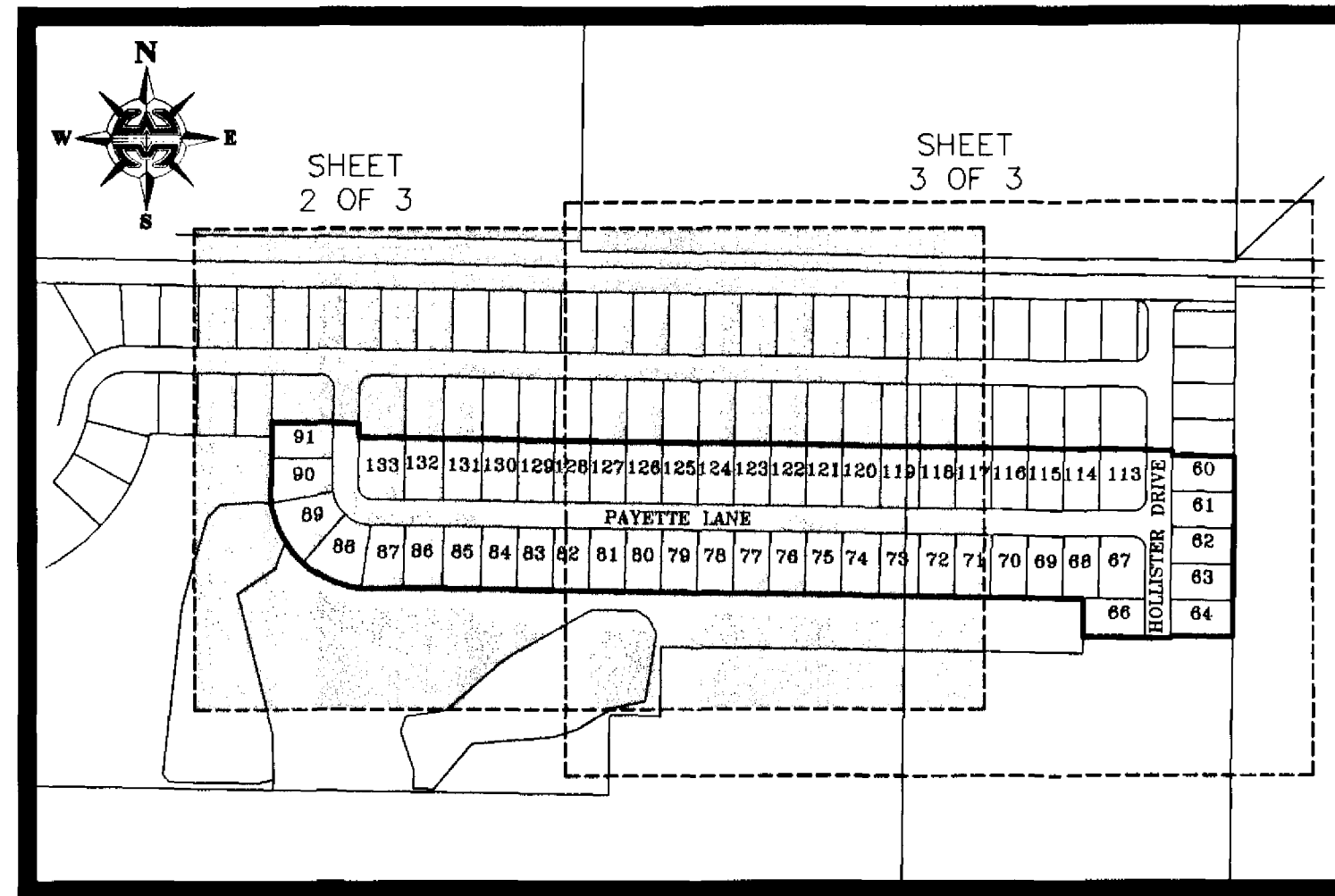
OAK GROVE AT WEST MELBOURNE PHASE TWO

PREPARED BY:
WILLIAM MOTT LAND SURVEYING INC.

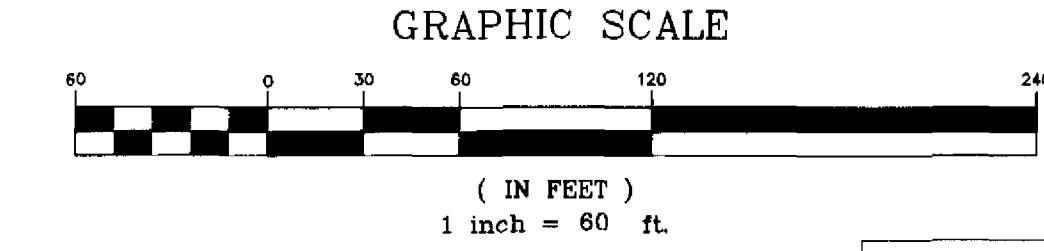
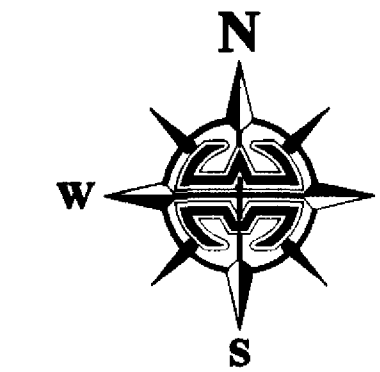
SATELLITE BEACH PROFESSIONAL CENTER
 1275 SOUTH PATRICK DRIVE, SUITE H
 SATELLITE BEACH, FLORIDA, 32937-3955
 PHONE (321) 773-4323
 PROJECT NUMBER: 2020461
 DRAWING NAME: OAK GROVE-PH2.DWG
 DRAWN BY: DANIEL D. GARNER P.S.M. 6189

A REPLAT OF PORTIONS OF LOTS 27, 28 AND 29, FLORIDA INDIAN RIVER LAND COMPANY, PLAT BOOK 1, PAGE 164
 SECTION 17, TOWNSHIP 28 SOUTH, RANGE 37 EAST, CITY OF WEST MELBOURNE, COUNTY OF BREVARD, FLORIDA

KEY MAP
 (NOT TO SCALE)



- LEGEND:**
- 4"x4" CONCRETE MONUMENT WITH NAIL AND DISK MARKED "PRM PLS 5060" (SET)
 - 4"x4" CONCRETE MONUMENT WITH NAIL AND DISK MARKED "PRM PLS 5060" (FOUND)
 - NAIL AND DISK MARKED "PCP PLS 5060" (SET)
 - △ NAIL AND DISK MARKED "PCP PLS 5060" (FOUND)
 - ▲ NAIL AND DISK MARKED "PRM PLS 5060" (FOUND)
 - P.U./D.E. PUBLIC UTILITIES AND DRAINAGE EASEMENT
 - C# CURVE NUMBER FOR CURVE TABLE
 - L# LINE NUMBER FOR LINE TABLE
 - R/W RIGHT-OF-WAY
 - P.B. PLAT BOOK
 - P.C. PAGE
 - RP RADIUS POINT
 - POL POINT-ON-LINE
 - POC POINT-ON-CURVE
 - PI POINT-OF-INTERSECTION
 - PT POINT-OF-TANGENCY
 - PC POINT-OF-CURVATURE
 - PRC POINT-OF-REVERSE CURVATURE
 - POC POINT-OF-COMPOUND CURVATURE
 - P.O.B. POINT-OF-BEGINNING
 - P.O.C. POINT-OF-COMMENCEMENT
 - PRM PERMANENT REFERENCE MONUMENT
 - PCP PERMANENT CONTROL POINT
 - X DENOTES LINE BREAK
 - (R) RADIAL
 - (NR) NON-RADIAL
 - E EASEMENT
 - O.R.B./O.R.Book OFFICIAL RECORDS BOOK
 - H.O.A. HOME OWNERS ASSOCIATION
 - LB LICENSED BUSINESS
 - PLS PROFESSIONAL LAND SURVEYOR
 - PSM PROFESSIONAL SURVEYOR AND MAPPER
 - R RADIUS
 - D DELTA
 - L LENGTH
 - CD CHORD DISTANCE
 - CB CHORD BEARING

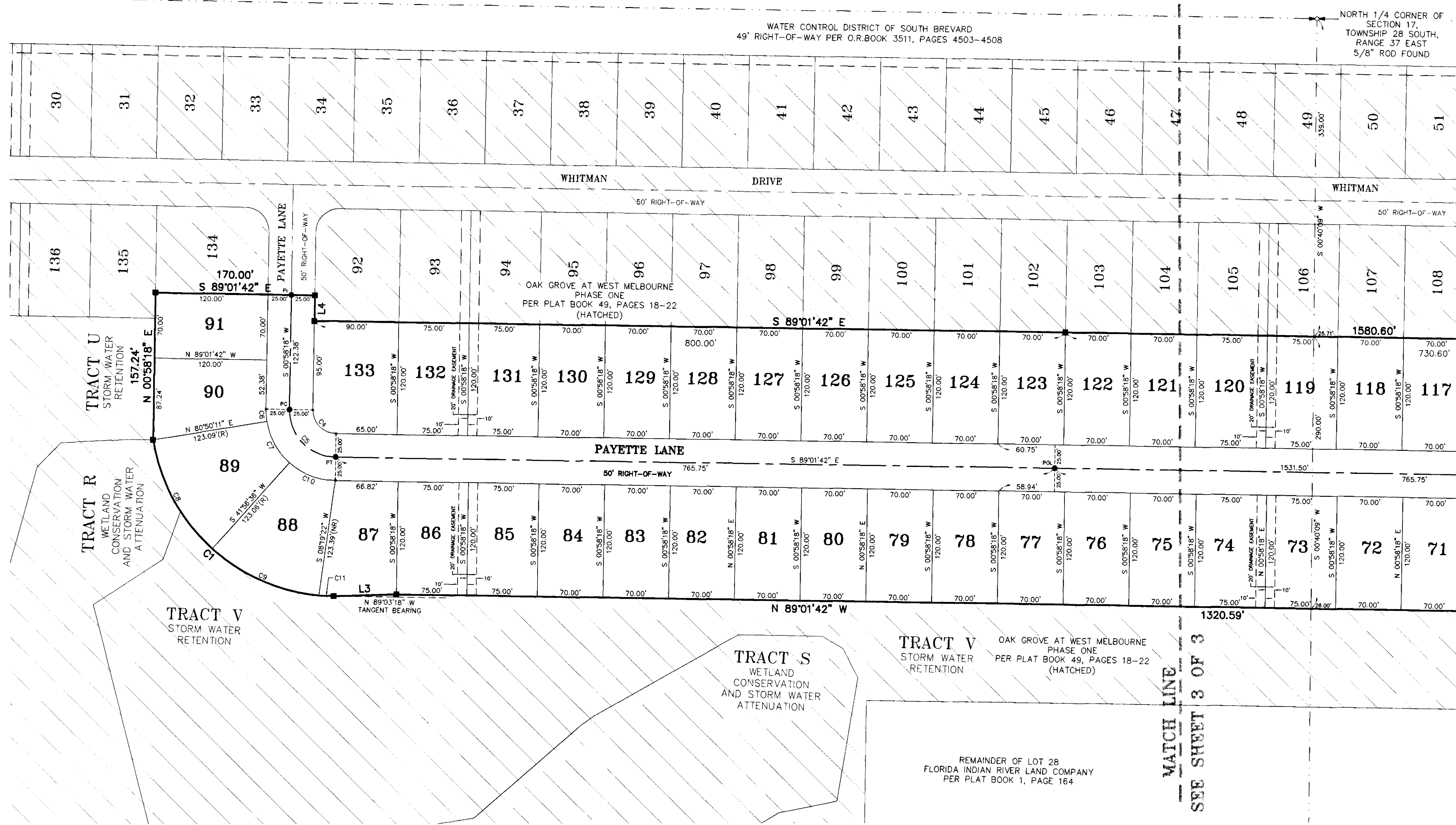


LINE	LENGTH	BEARING
L1	4.42'	S 00°36'46" W
L2	75.00'	N 00°36'46" E
L3	66.88'	S 89°24'03" E
L4	27.38'	S 00°58'18" W
L5	10.35'	S 00°36'46" W

NOTICE: THIS PLAT, AS RECORDED IN ITS GRAPHIC FORM, IS THE OFFICIAL DEPICTION OF THE SUBDIVIDED LANDS DESCRIBED HEREIN AND WILL IN NO CIRCUMSTANCES BE SUPPLANTED IN AUTHORITY BY ANY OTHER GRAPHIC OR DIGITAL FORM OF THE PLAT. THERE MAY BE ADDITIONAL RESTRICTIONS THAT ARE NOT RECORDED ON THIS PLAT THAT MAY BE FOUND IN THE PUBLIC RECORDS OF THIS COUNTY.

NOTE:
 PRIOR TO THE RELEASE OF THE PERFORMANCE BOND,
 ALL LOT CORNER MONUMENTATION WILL BE SET AS
 1/2" IRON RODS WITH CAPS MARKED "LB 3608".

CURVE	RADIUS	DELTA	CURVE TABLE	
			LENGTH	CHORD
C1	198.00'	79°53'12"	276.07'	254.24'
C2	25.00'	89°38'28"	39.11'	35.24'
C3	25.00'	90°21'32"	39.43'	35.47'
C4	25.00'	90°00'00"	39.27'	35.36'
C5	50.00'	90°00'00"	78.54'	70.71'
C6	75.00'	100°08'07"	13.27'	13.25'
C7	75.00'	38°53'34"	50.91'	49.94'
C8	198.00'	38°54'30"	134.46'	131.89'
C9	198.00'	36°24'17"	125.81'	123.70'
C10	75.00'	40°58'17"	53.63'	52.50'
C11	198.00'	4°34'24"	15.80'	15.80'



WATER CONTROL DISTRICT OF SOUTH BREVARD
 49' RIGHT-OF-WAY PER O.R.BOOK 3511, PAGES 4503-4508

NORTH 1/4 CORNER OF SECTION 17,
 TOWNSHIP 28 SOUTH,
 RANGE 37 EAST
 5/8" ROD FOUND

MATCH LINE
 SEE SHEET 3 OF 3

REMAINDER OF LOT 28
 FLORIDA INDIAN RIVER LAND COMPANY
 PER PLAT BOOK 1, PAGE 164