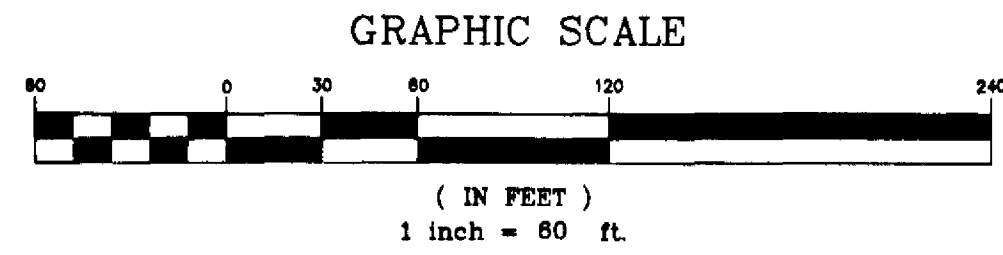


SHERIDAN LAKES

PHASE 1

A SUBDIVISION LYING WITHIN, THE CITY OF WEST MELBOURNE, BREVARD COUNTY, FLORIDA, SECTION 35, TOWNSHIP 27 SOUTH, RANGE 36 EAST AND A REPLAT OF LOTS 15 THROUGH 19 AND LOTS 40 THROUGH 47, INDIAN RIVER GROVES AND GARDENS AS RECORDED IN PLAT BOOK 6 AT PAGE 88 OF THE PUBLIC RECORDS OF BREVARD COUNTY, FLORIDA.



LINE	LENGTH	BEARING
L1	35.36	S89°08'27"W
L2	35.36	N59°34'40"W
L3	35.36	N59°34'40"W
L4	36.43	S61°09'27"W

CURVE	RADIUS	DELTA	ARC	CHORD	BEARING
C4	750.00'	42°46'	58.42'	58.40'	S12°49'20"E
C5	750.00'	14°50'06"	184.19'	193.65'	N07°38'10"W
C6	50.00'	90°00'00"	78.54'	70.71'	N44°46'53"E
C10	250.00'	10°22'20"	45.26'	45.20'	N84°35'43"E
C20	725.00'	5°37'08"	71.10'	71.07'	S08°55'54"E
C21	725.00'	3°18'45"	41.82'	41.91'	S13°23'50"E
C22	725.00'	2°14'52"	30.31'	30.31'	N13°56'00"W
C23	725.00'	5°38'51"	76.39'	76.36'	N09°58'21"W
C24	725.00'	5°34'48"	75.48'	75.45'	N04°22'31"W
C25	725.00'	1°22'00"	18.48'	18.49'	N00°54'02"W
C26	50.00'	17°59'59"	15.71'	15.64'	N08°46'53"E
C27	50.00'	56°14'36"	50.83'	48.67'	N46°54'11"E
C28	50.00'	13°45'24"	12.00'	11.98'	N82°54'11"E
C52	25.00'	86°25'00"	37.71'	34.23'	N57°22'57"W
C53	725.00'	0°52'46"	11.90'	11.90'	S14°36'50"E
C54	725.00'	6°34'29"	83.19'	83.15'	N11°45'58"W
C55	725.00'	5°58'30"	75.80'	75.57'	N05°29'29"W
C56	725.00'	2°17'08"	28.92'	28.92'	N01°21'40"W
C57	25.00'	90°00'00"	39.27'	35.36'	N44°46'53"E
C62	225.00'	4°44'44"	22.78'	22.77'	N87°24'31"E
C63	225.00'	5°37'36"	22.01'	22.00'	N82°13'21"E
C64	25.00'	86°25'00"	37.71'	34.23'	N57°22'57"E
C65	225.00'	6°00'01"	23.56'	23.55'	N82°24'34"E
C66	225.00'	4°22'19"	17.17'	17.16'	N87°35'44"E
C69	50.00'	241°16'54"	210.56'	86.04'	S00°13'07"E
C95	50.00'	239°15'55"	208.80'	86.92'	S00°47'23"W

N 00°31'11" W 2039.27'

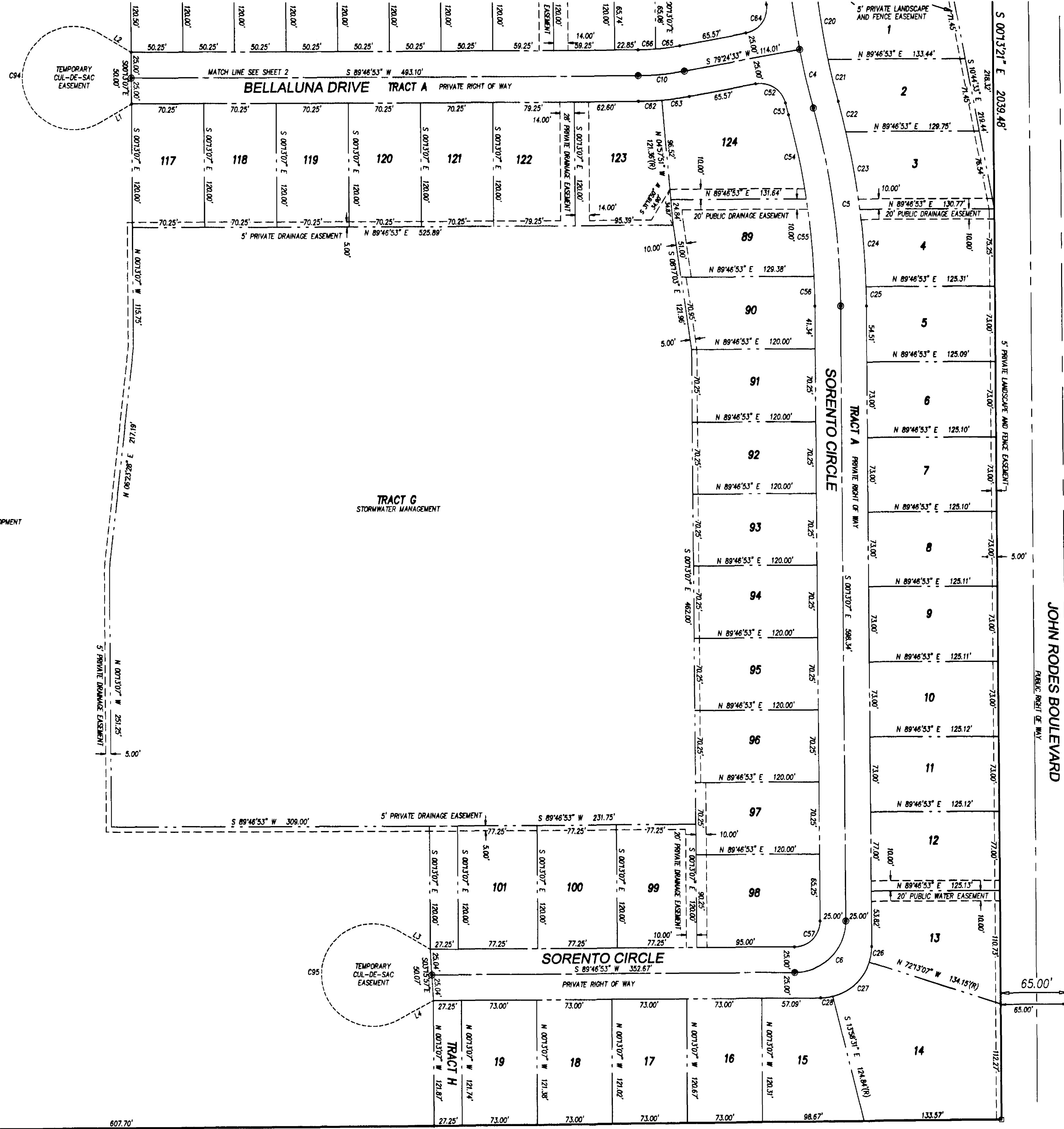
CRANE CREEK DRAINAGE DISTRICT CANAL
89 CANAL FRONT - 141' PER PAR. 7.5 & 7.6, 88

10' PUBLIC DRAINAGE EASEMENT

10' PUBLIC DRAINAGE EASEMENT

10' PUBLIC DRAINAGE EASEMENT

10' PUBLIC DRAINAGE EASEMENT



TRACT No. 1
RESERVED FOR FUTURE DEVELOPMENT

TRACT G
STORMWATER MANAGEMENT

TRACT H

NOTICE: This plat, as recorded in its graphic form, is the official depiction of the subdivided lands described herein and will in no circumstances be supplanting in authority by any other graphic or digital form of the plat. There may be additional restrictions that are not recorded on this plat that may be found in the public records of this county.

FOR DEED RESTRICTIONS SEE
ORB: 7819 PAGE 222L
ORB: PAGE
ORB: PAGE
FOR JOINER IN DEDICATION SEE
ORB: 4819 PAGE 222L
ORB: 4819 PAGE 222L
ORB: 4819 PAGE 222L

PREPARED BY
GORDON & ASSOCIATES
SURVEYORS & MAPPERS, INC.
218 FORREST AVENUE
COCOA, FLORIDA 32922
(321)639-8171