

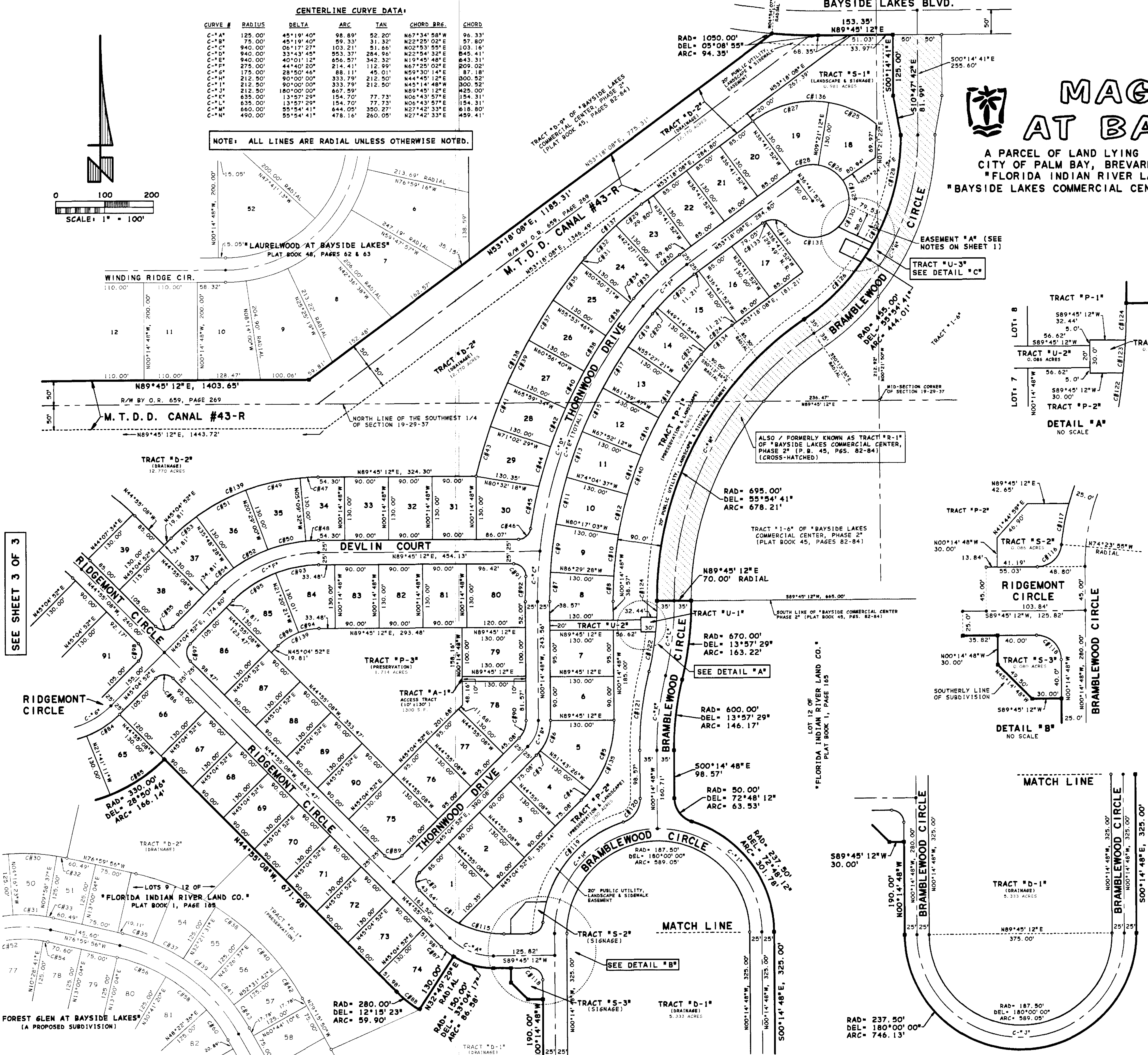
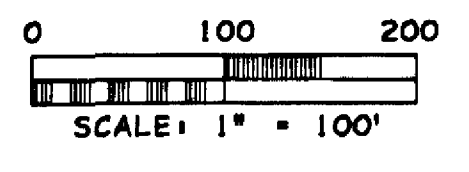
MAGNOLIA PARK AT BAYSIDE LAKES

A PARCEL OF LAND LYING IN SECTION 19, TOWNSHIP 29 SOUTH, RANGE 37 EAST CITY OF PALM BAY, BREVARD COUNTY, FLORIDA BEING "REPLATS" OF PORTIONS OF "FLORIDA INDIAN RIVER LAND CO.", RECORDED IN PLAT BOOK 1, PAGE 165 AND "BAYSIDE LAKES COMMERCIAL CENTER, PHASE TWO", RECORDED IN PLAT BOOK 45, PAGES 82-84

CENTERLINE CURVE DATA

CURVE #	RADIUS	DELTA	ARC	TAN	CHORD BRG.	CHORD
C-1-A	125.00'	45°19'40"	98.89'	52.20'	N67°34'58"W	96.33'
C-1-B	75.00'	45°19'40"	59.33'	31.32'	N22°25'02"E	57.60'
C-1-C	940.00'	06°17'57"	103.21'	51.86'	N02°53'55"E	103.16'
C-1-D	940.00'	33°43'45"	253.37'	284.96'	N22°54'32"E	845.41'
C-1-E	940.00'	40°01'12"	256.57'	342.32'	N19°45'48"E	843.31'
C-1-F	275.00'	44°40'20"	214.41'	112.99'	N67°25'02"E	209.02'
C-1-G	175.00'	28°50'46"	88.11'	45.01'	N59°30'14"E	87.18'
C-1-H	212.50'	90°00'00"	333.79'	212.50'	N44°45'12"E	300.52'
C-1-I	212.50'	90°00'00"	333.79'	212.50'	N45°14'48"W	300.52'
C-1-J	212.50'	180°00'00"	667.59'	0	N89°45'12"E	623.00'
C-1-K	635.00'	13°57'29"	154.70'	77.73'	N06°43'57"E	154.31'
C-1-L	635.00'	13°57'29"	154.70'	77.73'	N06°43'57"E	154.31'
C-1-M	860.00'	55°54'41"	844.05'	350.27'	N27°42'33"E	818.80'
C-1-N	490.00'	55°54'41"	478.16'	260.05'	N27°42'33"E	459.41'

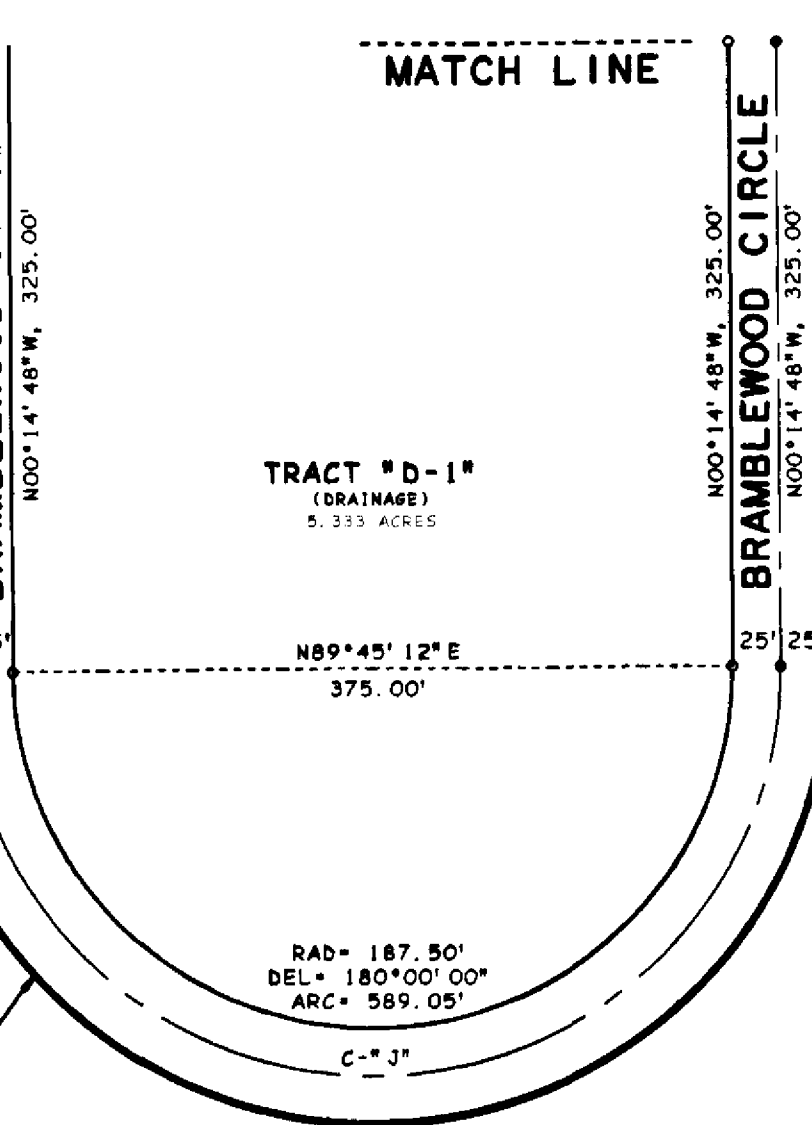
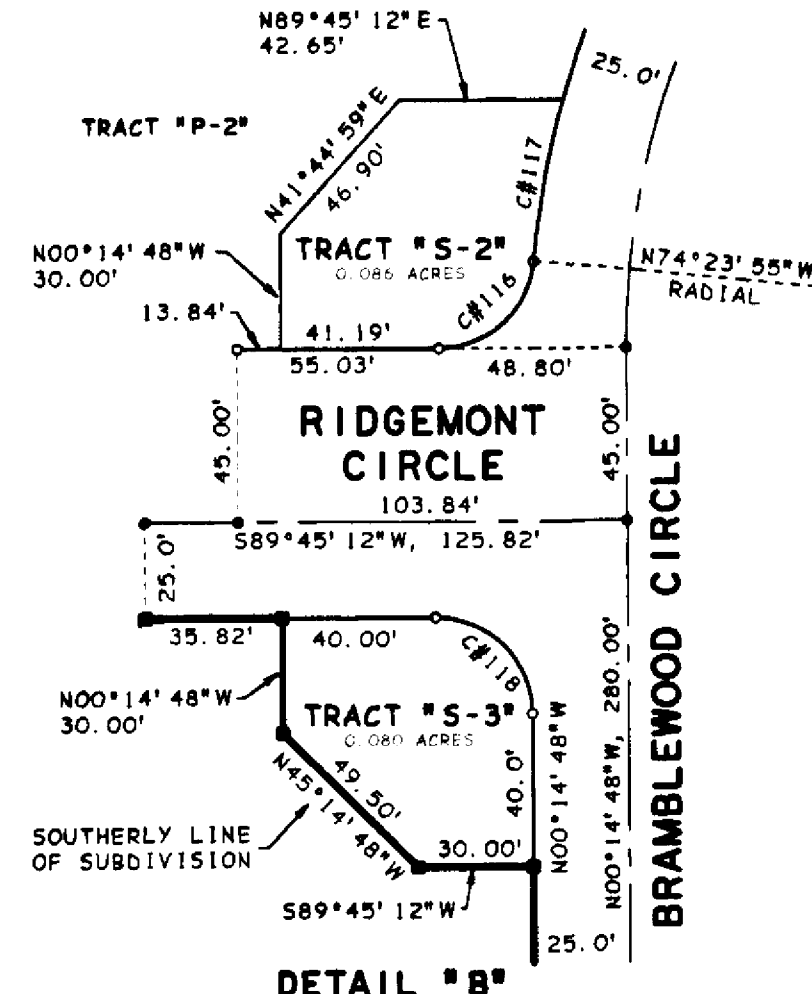
NOTE: ALL LINES ARE RADIAL UNLESS OTHERWISE NOTED.



CURVE DATA

CURVE #	RADIUS	DELTA	ARC	TAN	CHORD BRG.	CHORD
C #1	200.00'	17°52'03"	62.37'	31.44'	N53°51'10"W	62.12'
C #2	25.00'	90°00'00"	39.27'	25.00'	N00°04'52"E	35.36'
C #3	100.00'	06°48'17"	11.88'	5.95'	N41°40'43"E	11.87'
C #4	230.00'	06°48'17"	27.32'	13.67'	N41°40'43"E	27.30'
C #5	230.00'	38°31'22"	154.64'	80.37'	N19°00'53"E	151.74'
C #6	100.00'	38°31'22"	67.24'	34.99'	N19°00'53"E	65.98'
C #7	915.00'	03°45'20"	59.98'	30.00'	N01°37'52"E	59.96'
C #8	785.00'	03°45'20"	51.45'	25.74'	N01°37'52"E	51.45'
C #9	915.00'	06°12'25"	99.12'	49.61'	N06°36'45"E	99.08'
C #10	785.00'	06°12'25"	85.04'	42.56'	N06°36'45"E	85.00'
C #11	915.00'	08°12'25"	99.12'	49.61'	N12°49'10"E	99.08'
C #12	785.00'	08°12'25"	85.04'	42.56'	N12°49'10"E	85.00'
C #13	915.00'	06°12'25"	99.12'	49.61'	N19°01'35"E	99.08'
C #14	785.00'	06°12'25"	85.04'	42.56'	N19°01'35"E	85.00'
C #15	915.00'	06°12'25"	99.12'	49.61'	N25°14'01"E	99.08'
C #16	785.00'	06°12'25"	85.04'	42.56'	N25°14'01"E	85.00'
C #17	915.00'	06°12'25"	99.12'	49.61'	N31°26'26"E	99.08'
C #18	785.00'	06°12'25"	85.04'	42.56'	N31°26'26"E	85.00'
C #19	915.00'	05°13'46"	83.51'	41.78'	N37°09'31"E	83.48'
C #20	500.00'	01°47'24"	15.62'	7.81'	N40°40'06"E	15.62'
C #21	370.00'	02°04'31"	13.40'	6.70'	N40°48'40"E	13.40'
C #22	885.00'	05°13'46"	71.85'	35.85'	N37°09'31"E	71.62'
C #23	500.00'	11°44'19"	102.44'	51.40'	N47°25'58"E	102.26'
C #24	370.00'	11°27'12"	73.96'	37.11'	N47°34'32"E	73.84'
C #25	205.00'	30°00'42"	107.38'	54.95'	N65°38'27"W	106.16'
C #26	75.00'	46°03'04"	60.28'	31.88'	N57°31'17"W	58.67'
C #27	205.00'	46°03'04"	164.73'	87.14'	N74°19'40"E	160.37'
C #28	75.00'	46°03'04"	60.28'	31.87'	N76°19'40"E	58.67'
C #29	680.00'	05°45'18"	68.30'	34.18'	N50°25'29"E	68.27'
C #30	550.00'	05°45'18"	55.25'	27.65'	N50°25'29"E	55.22'
C #31	1095.00'	00°37'16"	11.87'	5.93'	N39°27'46"E	11.87'
C #32	680.00'	02°46'22"	85.73'	42.87'	N43°39'37"E	85.00'
C #33	550.00'	07°46'22"	74.62'	37.37'	N43°39'37"E	74.56'
C #34	965.00'	00°37'16"	10.46'	5.23'	N39°27'46"E	10.46'
C #35	1095.00'	05°02'54"	96.48'	48.27'	N36°37'41"E	96.45'
C #36	965.00'	05°02'54"	85.03'	42.54'	N36°37'41"E	85.00'
C #37	1095.00'	05°02'54"	96.48'	48.27'	N31°34'47"E	96.45'
C #38	965.00'	05°02'54"	85.03'	42.54'	N31°34'47"E	85.00'
C #39	1095.00'	05°02'54"	96.48'	48.27'	N26°31'53"E	96.45'
C #40	965.00'	05°02'54"	85.03'	42.54'	N26°31'53"E	85.00'
C #41	1095.00'	05°02'54"	96.48'	48.27'	N21°28'59"E	96.45'
C #42	965.00'	05°02'54"	85.73'	42.87'	N21°28'59"E	85.00'
C #43	1095.00'	05°34'39"	106.59'	53.34'	N16°10'12"E	106.55'
C #44	965.00'	05°02'54"	85.03'	42.54'	N16°26'04"E	85.00'
C #45	965.00'	05°16'00"	88.70'	44.38'	N11°16'37"E	88.67'
C #46	25.00'	81°06'34"	35.39'	21.39'	N49°11'55"E	32.51'
C #47	430.00'	04°54'44"	36.64'	18.44'	N31°14'50"E	36.85'
C #48	300.00'	04°54'44"	25.75'	12.87'	N87°17'50"E	25.71'
C #49	430.00'	15°19'28"	115.01'	57.85'	N77°10'44"E	114.67'
C #50	300.00'	15°19'28"	80.24'	40.36'	N77°10'44"E	80.00'
C #51	430.00'	15°19'28"	115.01'	57.85'	N61°51'16"E	114.67'
C #52	300.00'	15°19'28"	80.24'	40.36'	N61°51'16"E	80.00'
C #53	430.00'	09°06'40"	68.38'	34.66'	N49°38'12"E	68.31'
C #54	300.00'	09°06'40"	47.71'	23.90'	N49°38'12"E	47.66'
C #55	25.00'	90°00'00"	39.27'	25.00'	N89°55'08"W	35.36'
C #56	300.00'	00°57'18"	5.00'	2.50'	N44°55'08"W	5.00'
C #57	430.00'	00°39'58"	5.00'	2.50'	N44°55'08"W	5.00'
C #58	200.00'	23°13'58"	81.10'	41.11'	N56°41'50"E	80.24'
C #59	330.00'	23°13'58"	133.81'	67.84'	N56°41'50"E	132.90'
C #60	25.00'	90°00'00"	39.27'	25.00'	N89°55'09"W	35.36'
C #61	150.00'	12°15'23"	32.09'	16.11'	N51°02'50"W	32.03'
C #62	280.00'	12°15'23"	59.90'	30.06'	N51°02'50"W	59.78'
C #63	200.00'	27°27'37"	95.85'	48.89'	N76°13'13"E	94.94'
C #64	90.00'	45°19'40"	39.56'	20.88'	N22°25'02"E	38.53'
C #65	25.00'	93°04'08"	40.61'	26.38'	N43°42'44"W	36.29'
C #66	965.00'	03°04'08"	51.69'	25.85'	N01°17'16"E	51.68'
C #67	250.00'	20°44'38"	90.51'	45.76'	N79°22'53"E	90.02'
C #68	250.00'	20°44'38"	90.51'	45.76'	N79°22'53"E	90.02'
C #69	250.00'	23°55'43"	104.41'	52.98'	N57°02'43"E	103.85'
C #70	120.00'	24°18'23"	50.91'	25.84'	N57°14'03"E	50.53'
C #71	25.00'	90°00'00"	39.27'	25.00'	N00°04'52"E	35.36'
C #72	25.00'	90°00'00"	39.27'	25.00'	N00°04'52"E	35.36'
C #73	200.00'	27°27'37"	95.85'	48.89'	N76°13'13"E	94.94'
C #74	25.00'	84°32'06"	36.89'	22.72'	N47°29'09"E	33.63'
C #75	237.50'	10°22'59"	43.04'	21.58'	N10°24'35"E	42.98'
C #76	25.00'	90°00'00"	39.27'	25.00'	N45°14'48"W	35.36'
C #77	25.00'	90°00'00"	39.27'	25.00'	N45°14'48"W	35.36'
C #78	237.50'	10°22'59"	43.04'	21.58'	N36°09'18"E	42.98'
C #79	25.00'	90°00'00"	39.27'	25.00'	N06°43'57"E	59.34'
C #80	25.00'	90°00'00"	39.27'	25.00'	N06°43'57"E	59.34'
C #81	237.50'	10°22'59"	43.04'	21.58'	N27°42'33"E	42.98'
C #82	25.00'	90°00'00"	39.27'	25.00'	N04°23'51"E	30.10'
C #83	25.00'	90°00'00"	39.27'	25.00'	N04°23'51"E	30.10'
C #84	600.00'	03°12'25"	33.58'	16.80'	N01°21'24"E	33.58'
C #85	695.00'	05°54'41"	678.21'	368.85'	N27°42'33"E	691.62'
C #86	455.00'	20°59'38"	166.18'	84.03'	N48°12'06"E	165.26'
C #87	455.00'	06°17'58"	50.03'	25.04'	N25°53'19"E	50.00'
C #88	455.00'	22°59'08"	182.53'	92.51'	N11°14'46"E	181.31'
C #89	75.00'	41°00'46"	53.66'	28.05'	N14°08'22"W	52.55'
C #90	75.00'	41°00'46"	53.66'	28.05'	N25°53'18"E	50.00'
C #91	75.00'	92°43'37"	121.38'	78.66'	N88°16'38"W	108.56'
C #92	375.00'	74°59'42"	45.81'	26.85'	N79°24'40"W	42.61'
C #93	375.00'	74°59'42"	45.81'	26.85'	N58°11'48"W	42.61'
C #94	375.00'	13°31'44"	87.37'	43.89'	N46°32'16"E	87.16'
C #95	230.00'	45°19'40"	181.96'	96.04'	N22°25'02"E	177.25'
C #96	205.00'	76°03'46"	172.15'	160.35'	N88°39'59"E	252.60'
C #97	150.00'	131°31'44"	160.50'	160.50'	N25°53'18"E	150.00'
C #98	1095.00'	26°23'32"	504.39'	256.75'	N26°34'38"E	499.94'
C #99	120.00'	44°40'20"	93.56'	49.30'	N67°25'02"E	91.21'
C #100	785.00'	40°01'12"	548.31'	285.87'	N19°45'48"E	537.23'
C #101	455.00'	03°48'23"	15.00'	7.50'	N32°50'07"E	30.22'

SEE SHEET 3 OF 3



r.m. packard
 surveying & mapping, Inc.
 1013 Rockledge Drive
 Rockledge, FL 32955
 Tel.: (321) 632-3335