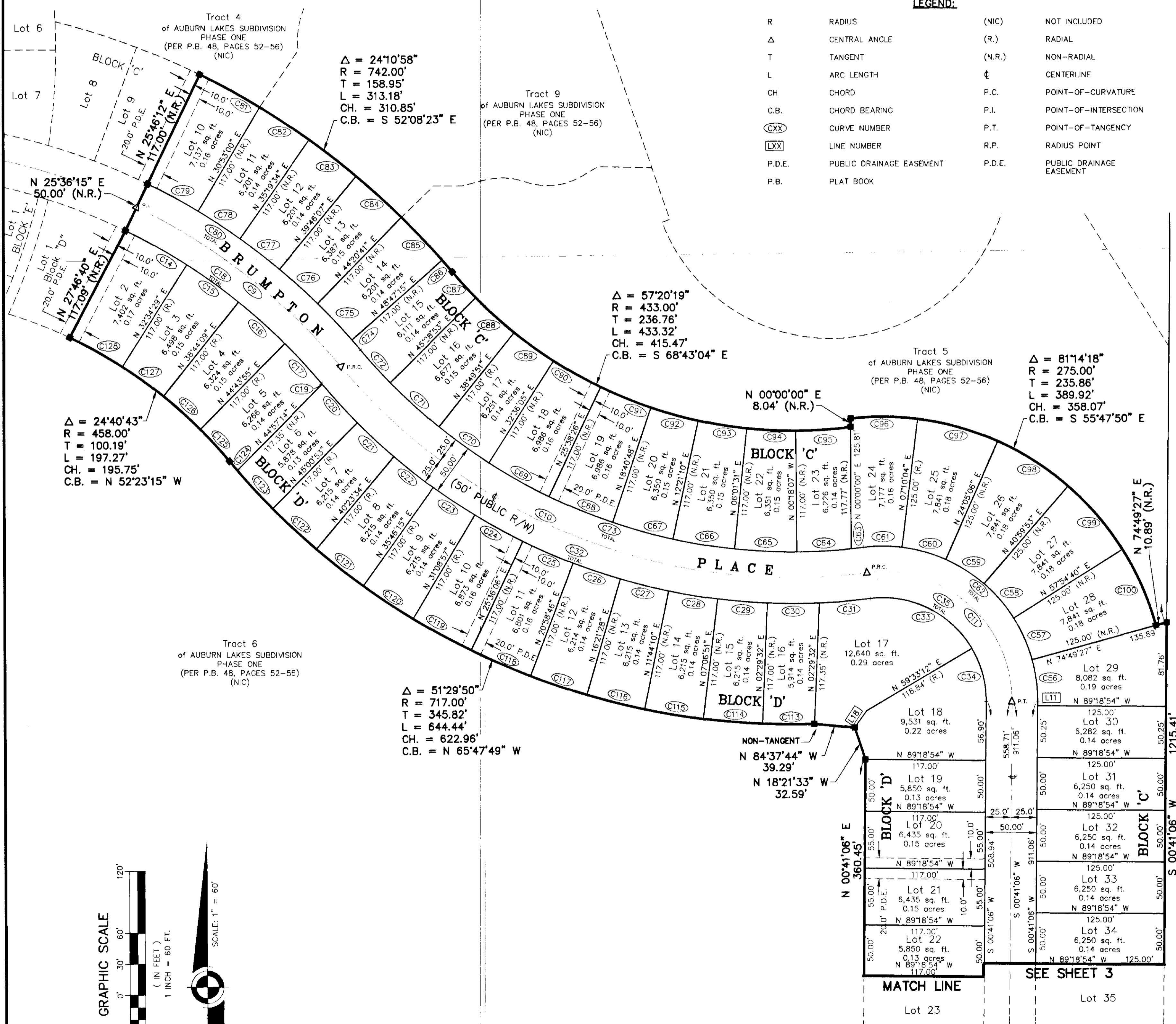


# Auburn Lakes Subdivision Phase Three

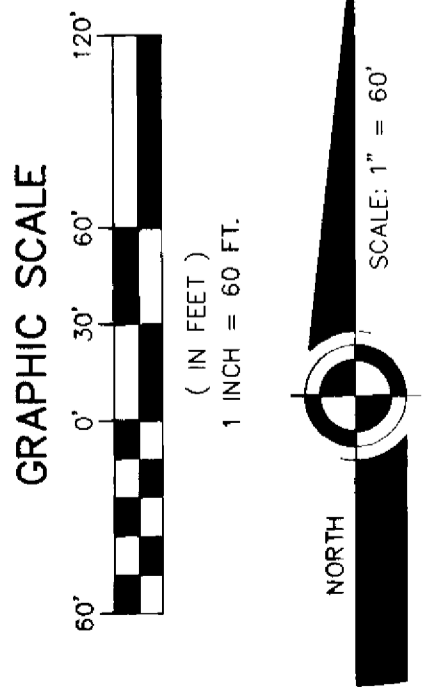
Viera North P.U.D. Tracts F4 and F5

A SUBDIVISION LYING IN SECTION 27, TOWNSHIP 25 SOUTH, RANGE 36 EAST OF BREVARD COUNTY, FLORIDA.



LINE	BEARING	DISTANCE
L11	N 00°41'06" E	3.61'
L18	N 35°47'48" E	20.00'

CURVE	RADIUS	DELTA	LENGTH	TANGENT	CHORD	BEARING
C9	600.00'	24°10'34"	253.17'	128.50'	251.30'	S 52°08'11" E
C10	575.00'	57°02'31"	572.45'	312.47'	549.10'	S 68°34'10" E
C11	125.00'	07°48'31"	213.31'	143.23'	188.36'	S 48°12'09" E
C14	575.00'	06°47'30"	68.16'	34.22'	68.12'	S 60°49'16" E
C15	575.00'	06°09'40"	61.83'	30.95'	61.80'	S 54°20'41" E
C16	575.00'	05°59'46"	60.17'	30.11'	60.15'	S 48°15'58" E
C17	575.00'	05°13'11"	52.38'	26.21'	52.36'	S 42°39'30" E
C18	575.00'	24°10'07"	242.55'	123.10'	240.75'	N 52°07'58" W
C19	600.00'	00°07'58"	1.39'	0.70'	1.39'	S 40°06'53" E
C20	600.00'	04°48'15"	50.31'	25.17'	50.29'	S 42°35'00" E
C21	600.00'	04°37'19"	48.40'	24.21'	48.39'	S 47°17'47" E
C22	600.00'	04°37'19"	48.40'	24.21'	48.39'	S 51°55'05" E
C23	600.00'	04°37'19"	48.40'	24.21'	48.39'	S 56°32'24" E
C24	600.00'	05°04'07"	53.08'	26.56'	53.06'	S 61°23'07" E
C25	600.00'	05°05'59"	53.40'	26.72'	53.39'	S 66°28'10" E
C26	600.00'	04°37'17"	48.40'	24.21'	48.38'	S 71°19'48" E
C27	600.00'	04°37'19"	48.40'	24.21'	48.39'	S 75°7'06" E
C28	600.00'	04°37'19"	48.40'	24.21'	48.39'	S 80°34'25" E
C29	600.00'	04°37'19"	48.40'	24.21'	48.39'	S 85°11'44" E
C30	600.00'	04°49'41"	50.56'	25.29'	50.54'	S 89°55'14" E
C31	600.00'	04°45'20"	49.80'	24.91'	49.79'	S 85°17'15" E
C32	600.00'	57°02'31"	597.34'	326.08'	572.98'	S 68°34'10" E
C33	100.00'	66°38'37"	116.32'	65.74'	109.87'	S 63°46'06" E
C34	100.00'	31°07'54"	54.33'	27.86'	53.67'	S 14°52'51" E
C35	100.00'	97°46'31"	170.65'	114.58'	150.68'	S 48°12'09" E
C56	150.00'	15°51'54"	41.53'	20.90'	41.40'	N 07°14'51" W
C57	150.00'	16°54'50"	44.28'	22.30'	44.12'	N 23°38'13" W
C58	150.00'	16°54'48"	44.28'	22.30'	44.12'	N 40°33'02" W
C59	150.00'	16°54'47"	44.28'	22.30'	44.12'	N 57°27'50" W
C60	150.00'	16°54'43"	44.28'	22.30'	44.11'	N 74°22'34" W
C61	150.00'	14°15'29"	37.33'	18.76'	37.23'	N 89°57'40" W
C62	150.00'	97°46'31"	255.98'	171.87'	226.03'	N 48°12'09" W
C63	550.00'	01°18'51"	12.30'	6.15'	12.29'	S 83°33'01" W
C64	550.00'	05°30'32"	52.88'	26.46'	52.86'	S 86°56'42" W
C65	550.00'	06°19'38"	60.74'	30.40'	60.71'	N 87°08'13" W
C66	550.00'	06°19'38"	60.74'	30.40'	60.71'	N 80°48'35" W
C67	550.00'	06°19'38"	60.74'	30.40'	60.71'	N 74°28'56" W
C68	550.00'	06°57'39"	66.82'	33.45'	66.78'	N 67°50'18" W
C69	550.00'	06°57'39"	66.82'	33.45'	66.78'	N 60°52'39" W
C70	550.00'	06°13'34"	59.78'	29.92'	59.75'	N 54°16'59" W
C71	550.00'	06°39'08"	63.86'	31.96'	63.82'	N 47°50'35" W
C72	550.00'	04°28'07"	42.90'	21.46'	42.89'	N 42°16'58" W
C73	550.00'	57°02'31"	547.56'	298.89'	525.23'	N 68°34'10" W
C74	625.00'	01°09'56"	12.71'	6.36'	12.71'	N 40°37'52" W
C75	625.00'	04°26'34"	48.46'	24.24'	48.45'	N 43°26'07" W
C76	625.00'	04°34'34"	49.92'	24.97'	49.90'	N 47°56'41" W
C77	625.00'	04°26'34"	48.46'	24.24'	48.45'	N 52°27'14" W
C78	625.00'	04°26'34"	48.46'	24.24'	48.45'	N 56°53'48" W
C79	625.00'	05°06'48"	55.78'	27.91'	55.76'	N 61°40'28" W
C80	625.00'	24°10'58"	263.79'	133.89'	261.84'	S 52°08'23" E
C81	742.00'	05°06'48"	66.22'	33.13'	66.20'	S 61°40'28" E
C82	742.00'	04°26'34"	57.53'	28.78'	57.52'	S 65°53'47" E
C83	742.00'	04°26'34"	57.53'	28.78'	57.52'	S 52°27'13" E
C84	742.00'	04°34'34"	59.26'	29.65'	59.25'	S 47°56'40" E
C85	742.00'	04°26'34"	57.53'	28.78'	57.52'	S 43°26'06" E
C86	742.00'	01°09'55"	15.09'	7.55'	15.09'	S 40°37'52" E
C87	433.00'	04°28'06"	33.77'	16.89'	33.76'	S 42°16'57" E
C88	433.00'	06°39'09"	50.28'	25.17'	50.25'	S 47°50'35" E
C89	433.00'	06°13'39"	47.06'	23.55'	47.04'	S 54°16'59" E
C90	433.00'	06°57'39"	52.60'	26.33'	52.57'	S 60°52'38" E
C91	433.00'	06°57'39"	52.60'	26.33'	52.57'	S 67°50'16" E
C92	433.00'	06°19'38"	47.82'	23.93'	47.79'	S 74°28'55" E
C93	433.00'	06°19'38"	47.82'	23.93'	47.79'	S 80°48'33" E
C94	433.00'	06°19'38"	47.82'	23.93'	47.79'	S 87°08'12" E
C95	433.00'	07°05'12"	53.56'	26.81'	53.52'	S 86°09'23" E
C96	275.00'	13°35'03"	65.20'	32.75'	65.05'	S 89°37'27" E
C97	275.00'	16°54'52"	81.18'	40.89'	80.89'	S 74°22'30" E
C98	275.00'	16°54'47"	81.18'	40.89'	80.88'	S 57°27'41" E
C99	275.00'	16°54'48"	81.18'	40.89'	80.88'	S 40°32'54" E
C100	275.00'	16°54'49"	81.18'	40.89'	80.88'	S 23°38'05" E
C113	717.00'	04°02'20"	50.54'	25.28'	50.53'	N 89°31'34" W
C114	717.00'	04°37'19"	57.84'	28.94'	57.82'	N 85°11'45" W
C115	717.00'	04°37'19"	57.84'	28.94'	57.82'	N 80°34'26" W
C116	717.00'	04°37'19"	57.84'	28.94'	57.82'	N 75°57'07" W
C117	717.00'	04°37'17"	57.83'	28.93'	57.82'	N 71°19'49" W
C118	717.00'	05°01'19"	62.84'	31.44'	62.82'	N 66°30'31" W
C119	717.00'	05°08'48"	64.41'	32.22'	64.38'	N 61°25'28" W
C120	717.00'	04°37'19"	57.84'	28.93'	57.82'	N 56°32'24" W
C121	717.00'	04°37'19"	57.84'	28.93'	57.82'	N 51°55'05" W
C122	717.00'	04°37'19"	57.84'	28.93'	57.82'	N 47°17'47" W
C123	717.00'	04°00'32"	50.17'	25.09'	50.16'	N 42°58'51" W
C124	717.00'	00°55'41"	11.61'	5.81'	11.61'	N 40°30'45" W
C125	458.00'	05°13'11"	41.72'	20.88'	41.71'	N 42°39'30" W
C126	458.00'	05°59'46"	47.93'	23.99'	47.91'	N 48°15'58" W
C127	458.00'	06°09'40"	49.25'	24.63'	49.23'	N 54°20'41" W
C128	458.00'	07°18'05"	58.37'	29.22'	58.33'	N 61°04'34" W



**NOTES:**  
 1. SEE SHEET 1 OF 3 FOR DESCRIPTION AND NOTES.  
 2. SEE SHEET 3 OF 3 FOR ADDITIONAL LOT AND TRACT DIMENSIONS.