

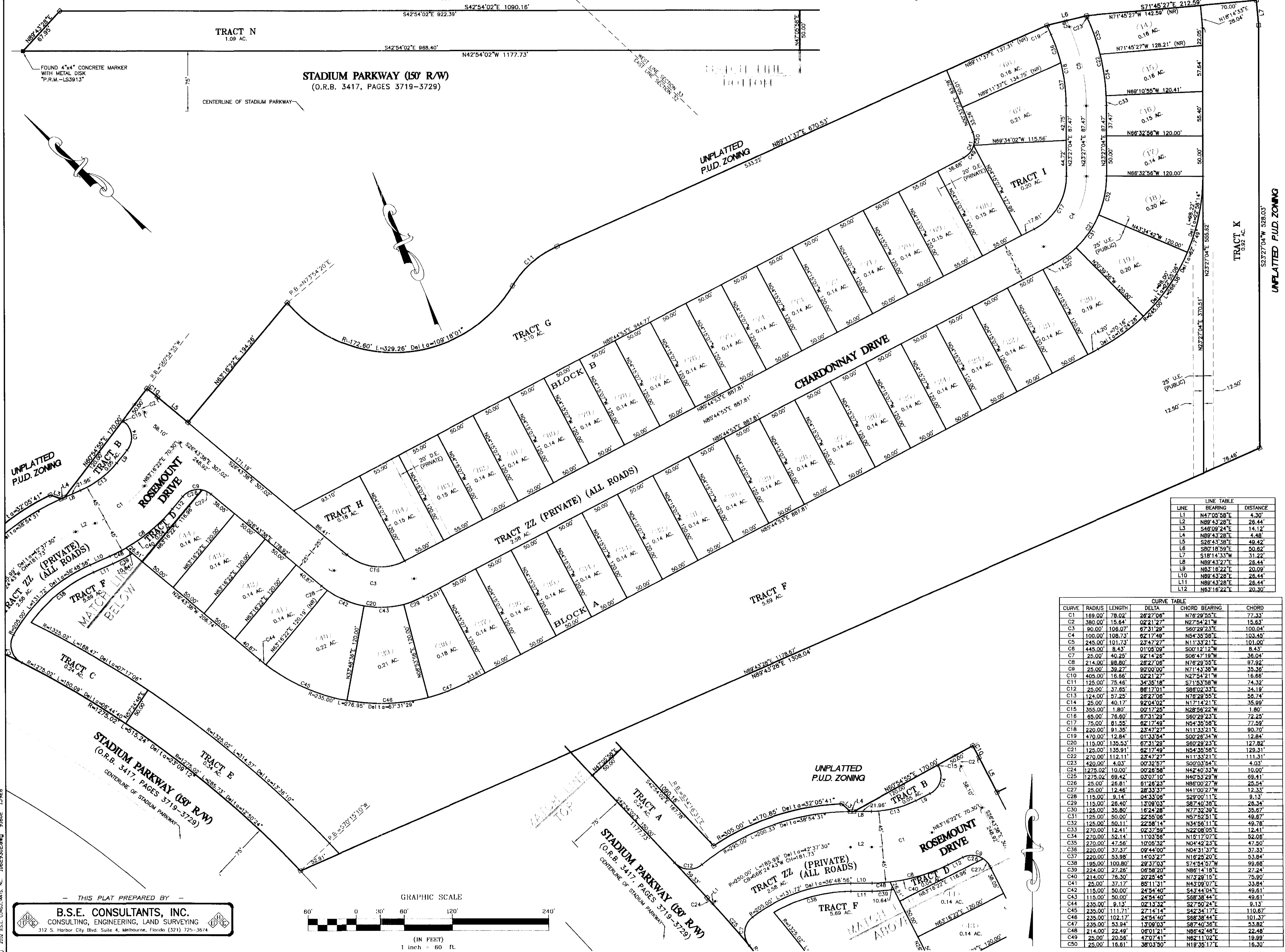
SONOMA SOUTH - PHASE 1

VIERA CENTRAL P.U.D. - A PORTION OF PARCEL 1

SECTIONS 32 AND 33, TOWNSHIP 25 SOUTH, RANGE 36 EAST

VIERA, BREVARD COUNTY, FLORIDA

UNPLATTED P.U.D. ZONING



LINE	BEARING	DISTANCE
L1	N47°05'58"E	4.30'
L2	N89°43'28"E	26.44'
L3	S48°08'24"E	14.12'
L4	N89°43'28"E	4.48'
L5	S26°43'38"E	49.42'
L6	S80°18'59"E	50.62'
L7	S18°14'33"W	31.22'
L8	N89°43'28"E	26.44'
L9	N83°16'22"E	20.09'
L10	N89°43'28"E	26.44'
L11	N89°43'28"E	26.44'
L12	N83°16'22"E	20.30'

CURVE	RADIUS	LENGTH	DELTA	CHORD BEARING	CHORD
C1	169.00'	78.02'	26°27'06"	N76°29'55"E	77.33'
C2	380.00'	15.84'	02°21'27"	N27°54'21"W	15.63'
C3	90.00'	106.07'	67°31'29"	S60°28'23"E	100.04'
C4	100.00'	108.73'	62°17'49"	N54°35'58"E	103.45'
C5	245.00'	101.73'	23°47'27"	N11°33'21"E	101.00'
C6	445.00'	8.43'	02°05'00"	S00°12'12"E	8.43'
C7	245.00'	40.25'	92°14'26"	S06°47'18"W	36.04'
C8	214.00'	98.80'	26°27'06"	N76°29'55"E	97.92'
C9	25.00'	39.27'	90°00'00"	N71°43'38"W	35.38'
C10	405.00'	16.66'	02°21'27"	N27°54'21"W	16.66'
C11	125.00'	75.46'	34°35'18"	S71°53'58"W	74.32'
C12	25.00'	37.65'	86°17'01"	S86°02'33"E	34.19'
C13	124.00'	57.45'	26°27'06"	N76°29'55"E	58.74'
C14	25.00'	40.17'	92°14'26"	N17°14'21"E	35.99'
C15	355.00'	1.80'	00°17'25"	N28°56'22"W	1.80'
C16	65.00'	76.80'	67°31'29"	S60°28'23"E	72.25'
C17	75.00'	81.35'	62°17'49"	N54°35'58"E	77.59'
C18	220.00'	91.35'	23°47'27"	N11°33'21"E	90.70'
C19	470.00'	12.84'	01°33'54"	S00°28'34"W	12.84'
C20	270.00'	155.53'	67°31'29"	S60°28'23"E	127.82'
C21	125.00'	135.91'	62°17'49"	N54°35'58"E	129.31'
C22	270.00'	112.11'	23°47'27"	N11°33'21"E	111.31'
C23	420.00'	4.03'	00°32'57"	S00°03'54"E	4.03'
C24	1275.02'	10.00'	00°28'58"	N42°40'33"W	10.00'
C25	1275.02'	69.42'	03°07'10"	N40°53'29"W	69.41'
C26	25.00'	26.81'	61°26'23"	N86°00'27"W	25.54'
C27	270.00'	12.41'	02°21'27"	N27°54'21"W	12.34'
C28	115.00'	9.14'	113°33'58"	N43°09'07"E	9.13'
C29	115.00'	26.40'	17°09'03"	S87°40'36"E	26.34'
C30	125.00'	35.80'	16°24'28"	N77°32'39"E	35.67'
C31	125.00'	50.00'	22°58'06"	N57°52'51"E	49.87'
C32	125.00'	50.11'	22°58'14"	N34°56'11"E	49.78'
C33	270.00'	12.41'	02°21'27"	N27°54'21"W	12.41'
C34	270.00'	37.17'	85°11'51"	N43°09'07"E	35.84'
C35	270.00'	47.56'	10°06'32"	N04°45'23"E	47.50'
C36	220.00'	37.37'	09°44'00"	N04°31'37"E	37.33'
C37	220.00'	33.98'	14°03'27"	N16°25'20"E	33.84'
C38	195.00'	100.80'	29°37'03"	S74°54'57"W	99.68'
C39	224.00'	27.26'	06°58'20"	N86°14'18"E	27.24'
C40	214.00'	79.30'	20°28'45"	N73°28'15"E	75.90'
C41	115.00'	37.17'	85°11'51"	N43°09'07"E	35.84'
C42	115.00'	50.00'	24°54'40"	S44°04'04"E	49.11'
C43	115.00'	50.00'	24°54'40"	S68°38'44"E	49.61'
C44	235.00'	9.13'	02°13'32"	S27°50'24"E	9.13'
C45	235.00'	111.71'	27°14'14"	S42°34'17"E	110.67'
C46	235.00'	102.17'	24°54'40"	S68°38'44"E	101.37'
C47	235.00'	53.94'	13°09'03"	S87°40'36"E	53.82'
C48	214.00'	24.49'	06°02'45"	N86°42'48"E	23.48'
C49	28.00'	20.09'	12°07'41"	N82°11'02"E	19.89'
C50	25.00'	16.61'	38°03'50"	N18°35'17"E	16.30'

THIS PLAT PREPARED BY
B.S.E. CONSULTANTS, INC.
CONSULTING, ENGINEERING, LAND SURVEYING
312 S. Harbor City Blvd., Suite 4, Melbourne, Florida (321) 721-3574

