

# HAMMOCK LAKES EAST PHASE ONE

## A REPLAT OF A PORTION OF LOTS 19, 20, 21 AND 28

### FLORIDA INDIAN RIVER LAND COMPANY, PLAT BOOK 1, PAGE 164

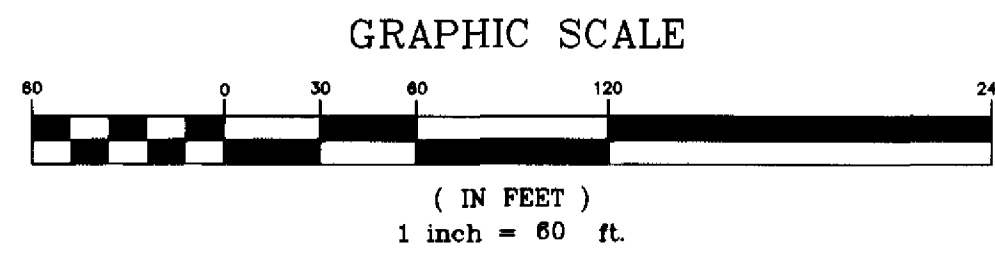
#### SECTION 18, TOWNSHIP 28 SOUTH, RANGE 37 EAST

#### CITY OF WEST MELBOURNE, COUNTY OF BREVARD, FLORIDA.

PREPARED BY:  
**WILLIAM MOTT LAND SURVEYING INC.**

SATELLITE BEACH PROFESSIONAL CENTER  
1275 SOUTH PATRICK DRIVE, SUITE H  
SATELLITE BEACH, FLORIDA, 32937-3955  
PHONE (321) 773-4323  
PROJECT NUMBER: 2020125  
DRAWING NAME: HAMMOCK EAST PH1.DWG  
DRAWN BY: EDWARD A. WHYTE  
CHECKED BY: DANIEL D. GARNER P.S.M. 6189

PLAT BOOK 164 PAGE 45  
SHEET 2 OF 3  
SECTION 18 TWP. 28 S., RANGE 37 E.

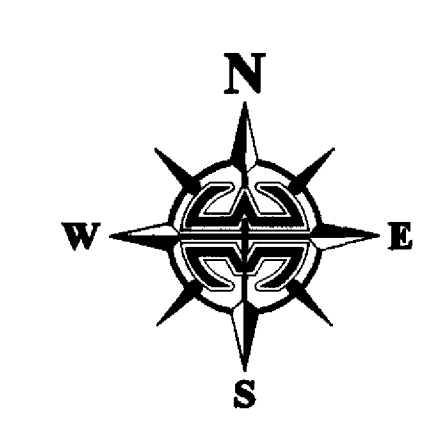
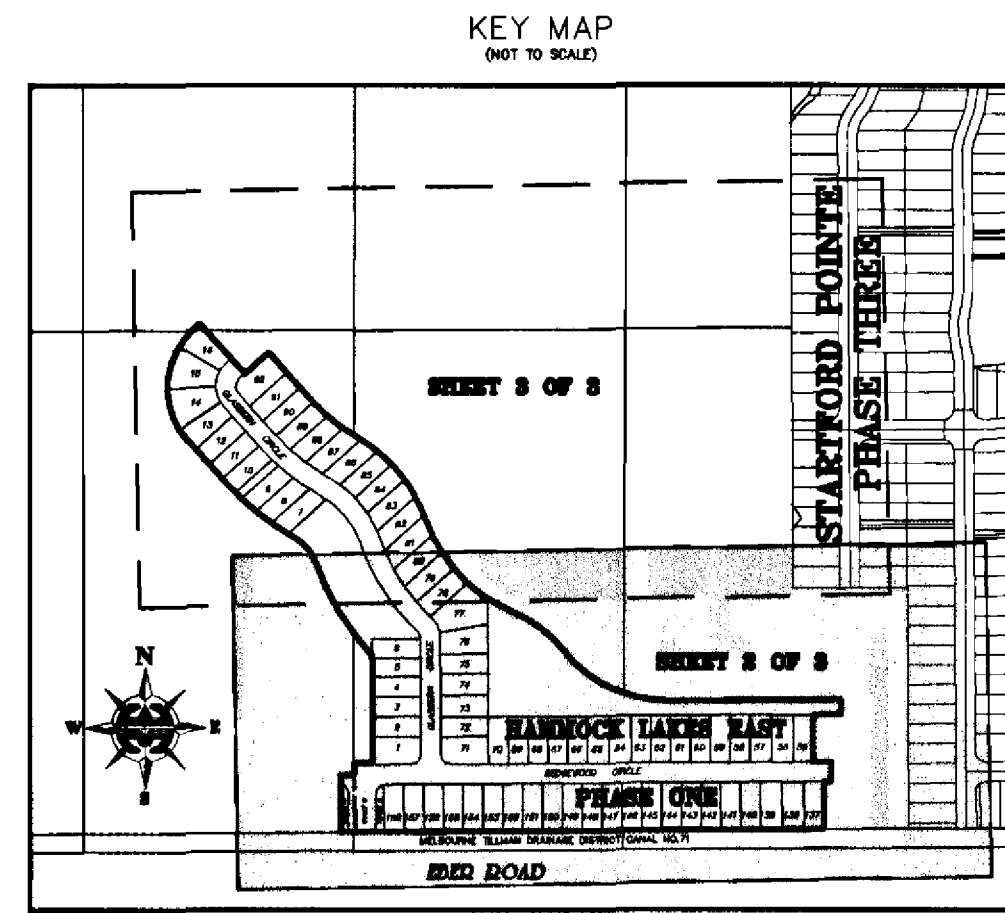


CURVE	RADIUS	DELTA	LENGTH	CHORD	CHORD BEARING
C1	695.00	23°43'01"	287.69	285.64	N 30°15'28" W
C2	95.00	41°26'42"	68.72	67.23	N 39°07'18" W
C3	695.00	18°54'25"	229.34	228.30	N 50°23'27" E
C4	197.50	90°00'00"	310.23	279.31	N 04°03'46" E
C5	395.00	18°54'25"	130.35	129.76	S 50°23'27" E
C6	395.00	41°22'34"	285.25	279.09	S 39°09'23" E
C7	395.00	47°46'25"	329.35	319.89	S 42°21'18" E
C8	310.00	29°19'56"	158.70	156.98	S 51°34'32" E
C9	340.00	52°24'24"	310.99	300.26	S 63°06'46" E
C10	50.00	45°58'43"	40.12	39.06	N 22°18'19" W
C11	545.00	28°53'44"	255.83	253.49	S 31°50'49" E
C12	245.00	41°26'42"	177.22	173.38	N 39°07'18" W
C13	545.00	18°54'25"	179.84	179.03	S 50°23'27" E
C14	50.00	90°00'00"	78.54	70.71	S 04°03'46" W
C15	25.00	45°58'43"	39.27	35.36	N 45°41'02" E
C16	25.00	45°58'43"	20.06	19.53	N 22°18'19" W
C17	20.00	78°27'47"	27.39	25.30	N 38°32'51" W
C18	20.00	78°27'47"	27.39	25.30	S 39°34'56" W
C19	695.00	11°7'21"	15.64	15.64	S 41°28'17" E
C20	570.00	26°53'44"	267.57	265.12	S 31°50'49" E
C21	695.00	10°59'54"	13.93	13.93	S 54°37'20" E
C22	695.00	0°36'06"	7.30	7.30	S 59°32'37" E
C30	220.00	35°13'47"	135.27	133.15	N 36°00'51" W
C32	220.00	6°12'55"	23.86	23.85	S 58°44'12" W
C33	695.00	47°18'24"	51.84	51.82	S 56°11'05" E
C34	570.00	2°51'03"	28.36	28.36	S 58°25'08" E
C35	695.00	0°55'17"	11.18	11.18	S 58°46'56" E

CURVE	RADIUS	DELTA	LENGTH	CHORD	CHORD BEARING
C36	570.00	5°10'12"	51.43	51.41	S 54°24'31" E
C37	695.00	4°12'01"	50.95	50.94	S 51°58'53" E
C38	570.00	5°04'53"	50.55	50.54	S 49°16'58" E
C39	695.00	4°09'09"	50.37	50.36	S 47°46'18" E
C40	570.00	2°01'03"	20.07	20.07	S 45°44'00" E
C41	695.00	1°39'10"	20.05	20.05	S 44°52'09" E
C42	570.00	3°47'15"	37.68	37.67	S 42°49'51" E
C43	695.00	3°06'20"	37.67	37.67	S 42°29'24" E
C44	75.00	8°20'06"	10.91	10.90	S 36°46'11" E
C45	197.50	9°09'28"	31.57	31.53	S 36°21'30" E
C46	75.00	3°55'27"	41.79	41.25	S 16°38'24" E
C47	197.50	32°07'25"	110.73	109.29	S 15°43'03" E
C48	75.00	31°55'27"	41.79	41.25	S 15°17'02" E
C49	197.50	31°48'51"	109.66	108.26	S 16°15'05" W
C50	75.00	17°49'01"	23.32	23.23	S 40°09'16" W
C51	197.50	16°54'16"	58.27	58.06	S 40°36'38" W
C52	25.00	90°00'00"	39.27	35.36	S 04°03'46" W
C53	520.00	5°12'12"	47.22	47.21	S 43°32'20" E
C54	395.00	6°51'25"	47.27	47.24	S 44°21'56" E
C55	520.00	5°33'55"	50.51	50.49	S 48°55'23" E
C56	395.00	7°22'57"	50.89	50.86	S 51°29'07" E
C57	520.00	5°40'14"	51.46	51.44	S 54°32'28" E
C58	395.00	44°00'04"	32.18	32.17	S 57°30'37" E
C59	395.00	2°54'52"	20.09	20.09	S 58°23'13" W
C60	520.00	2°28'04"	22.40	22.40	S 58°36'37" E
C61	270.00	6°19'21"	29.79	29.78	N 56°40'59" W
C62	395.00	7°25'39"	51.21	51.17	N 53°12'58" W

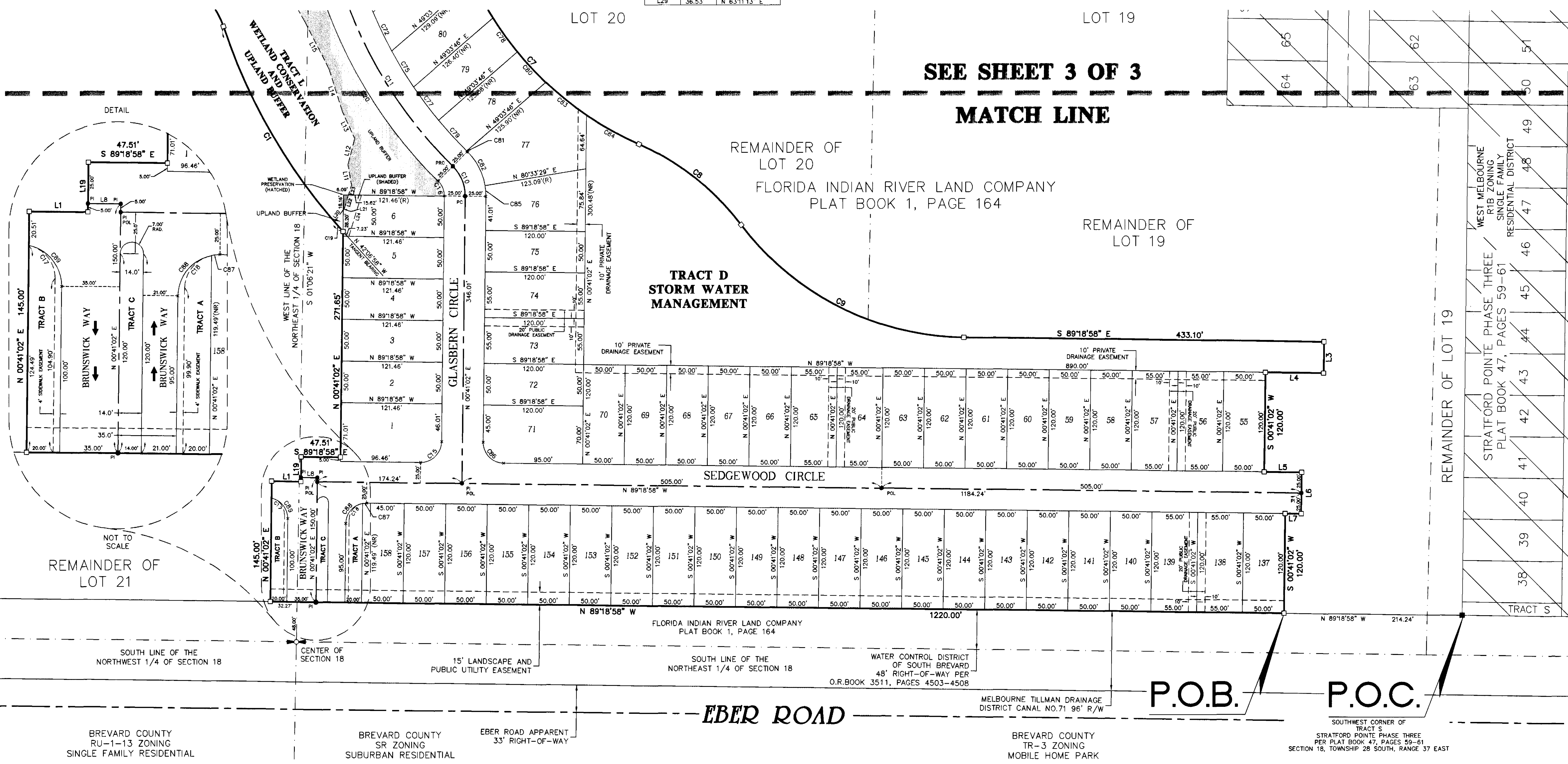
CURVE	RADIUS	DELTA	LENGTH	CHORD	CHORD BEARING
C63	270.00	10°42'39"	50.47	50.40	N 48°09'59" W
C64	395.00	7°17'04"	50.22	50.19	N 45°51'36" W
C65	270.00	10°38'42"	50.16	50.09	N 37°29'18" W
C66	395.00	7°15'49"	50.08	50.04	N 38°35'10" W
C67	270.00	10°57'51"	51.67	51.59	N 26°41'02" W
C68	395.00	7°21'44"	50.75	50.72	N 31°16'23" W
C69	270.00	2°48'10"	13.21	13.21	N 19°48'02" W
C70	520.00	4°25'43"	40.19	40.18	S 20°36'49" E
C71	395.00	7°35'44"	52.36	52.32	N 23°47'40" W
C72	520.00	5°42'46"	51.85	51.83	S 25°41'03" E
C73	395.00	1°31'43"	10.54	10.54	N 19°13'57" W
C74	395.00	6°11'09"	42.64	42.62	S 21°33'40" E
C75	520.00	5°35'23"	50.73	50.71	S 31°20'08" E
C76	395.00	7°26'09"	51.26	51.23	S 28°22'19" E
C77	520.00	5°31'30"	50.14	50.12	S 36°53'34" E
C78	395.00	7°17'15"	50.24	50.21	S 35°44'01" E
C79	520.00	5°30'47"	50.04	50.02	S 42°24'43" E
C80	395.00	7°15'44"	50.07	50.03	S 43°00'31" E
C81	520.00	0°07'34"	1.14	1.14	S 45°13'54" E
C82	75.00	35°51'10"	46.93	46.17	N 27°22'06" W
C83	395.00	9°08'59"	63.08	63.01	S 51°12'52" E
C84	395.00	10°27'09"	72.06	71.96	S 61°00'56" E
C85	75.00	10°27'09"	13.25	13.24	N 04°22'45" W
C86	25.00	90°00'00"	39.27	35.36	S 44°18'58" E
C87	25.00	11°32'13"	5.03	5.03	S 84°54'56" W
C88	25.00	78°27'47"	34.24	31.62	S 39°54'56" W
C89	25.00	78°27'47"	34.24	31.62	N 38°32'51" E

LINE	LENGTH	BEARING
L1	35.27	S 89°18'58" E
L2	21.67	N 49°03'46" E
L3	37.70	S 00°41'02" W
L4	70.00	N 89°18'58" W
L5	45.00	S 89°18'58" E
L6	50.00	S 00°41'02" W
L7	19.24	N 89°18'58" W
L8	19.73	S 89°18'58" E
L9	19.17	S 49°03'46" W
L10	19.17	N 49°03'46" E
L11	24.65	S 09°55'01" E
L12	32.86	S 14°21'25" W
L13	35.73	S 24°40'23" E
L14	53.29	S 17°16'16" E
L15	64.63	S 27°12'12" E
L16	52.61	S 29°52'21" E
L17	32.56	N 74°36'18" E
L18	46.20	S 77°00'21" E
L19	30.00	N 00°41'02" E
L20	17.99	S 36°22'37" W
L21	2.39	S 36°22'37" W
L22	18.88	S 16°49'55" W
L23	12.52	S 16°49'55" W
L24	52.05	S 16°49'55" W
L25	20.95	S 63°11'31" W
L26	32.25	N 56°29'33" W
L27	3.99	S 53°06'07" W
L28	21.66	S 31°25'34" E
L29	36.53	N 63°11'13" E



**LEGEND:**

- = 4"x4" CONCRETE MONUMENT WITH NAIL AND DISK MARKED "PRM PLS 5060" (SET)
- = 4"x4" CONCRETE MONUMENT WITH NAIL AND DISK MARKED "PRM PLS 5060" (FOUND)
- = NAIL AND DISK MARKED "PCP PLS 5060" (SET)
- = NAIL AND DISK MARKED "PCP PLS 5060" (FOUND)
- ▲ = NAIL AND DISK MARKED "PRM PLS 5060" (SET)
- △ = NAIL AND DISK MARKED "PRM PLS 5060" (FOUND)
- P/U&E = PUBLIC UTILITIES AND DRAINAGE EASEMENT
- CL# = CURVE NUMBER FOR CURVE TABLE
- L# = LINE NUMBER FOR LINE TABLE
- R/W = RIGHT-OF-WAY
- P.B. = PLAT BOOK
- P.S. = PAGE
- RP = RADIUS POINT
- POL = POINT-ON-LINE
- PT = POINT-ON-CURVE
- PI = POINT-OF-INTERSECTION
- PC = POINT-OF-TANGENCY
- PC = POINT-OF-CURVATURE
- PRC = POINT-OF-REVERSE CURVATURE
- POC = POINT-OF-COMPOUND CURVATURE
- P.O.B. = POINT-OF-BEGINNING
- P.O.C. = POINT-OF-COMMENCEMENT
- PRM = PERMANENT REFERENCE MONUMENT
- PCP = PERMANENT CONTROL POINT
- (R) = RADIAL
- (NR) = NON-RADIAL
- ESMT = EASEMENT
- O.R.B./O.R.Book = OFFICIAL RECORDS BOOK
- H.O.A. = HOME OWNERS ASSOCIATION
- LB = LICENSED BUSINESS
- PLS = PROFESSIONAL LAND SURVEYOR
- PSM = PROFESSIONAL SURVEYOR AND MAPPER
- R = RADIUS
- D = DELTA
- L = LENGTH
- CD = CHORD DISTANCE
- CB = CHORD BEARING



BREVARD COUNTY  
RU-1-13 ZONING  
SINGLE FAMILY RESIDENTIAL

BREVARD COUNTY  
SR ZONING  
SUBURBAN RESIDENTIAL

BREVARD COUNTY  
TR-3 ZONING  
MOBILE HOME PARK