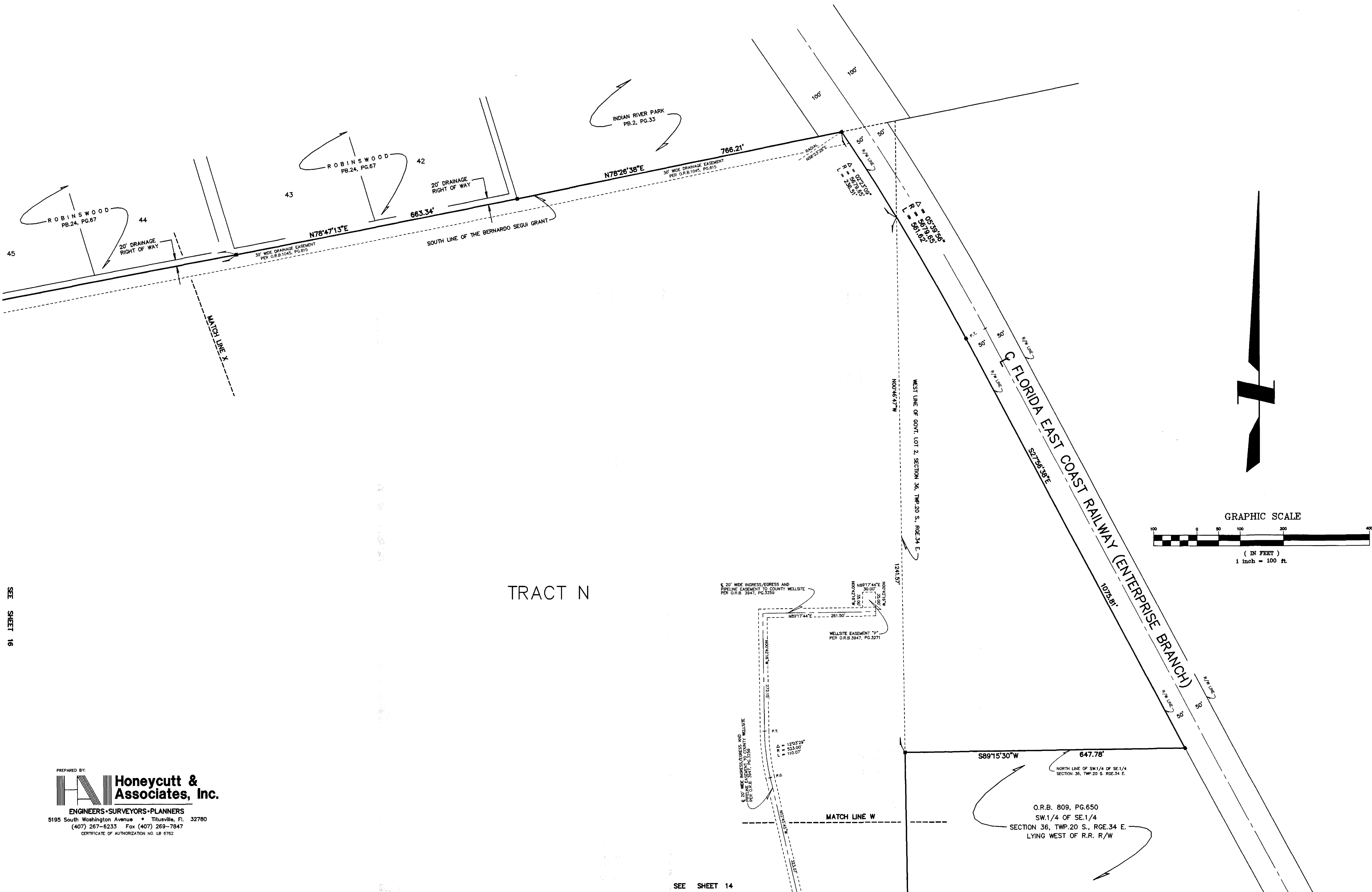


WALKABOUT P.U.D.

A SUBDIVISION OF A PART OF SECTIONS 1, 2, 12 AND 13, TOWNSHIP 21 SOUTH, RANGE 34 EAST, TOGETHER WITH A PART OF SECTION 6, TOWNSHIP 21 SOUTH, RANGE 35 EAST, ALSO TOGETHER WITH A PART OF SECTIONS 35 AND 36, TOWNSHIP 20 SOUTH, RANGE 34 EAST, BREVARD COUNTY, FLORIDA AND A PORTION THEREOF BEING A REPLAT OF LOT 1, BLOCK 2 AND A PORTION OF LOTS 8 THROUGH 15, BLOCK 1 AS SHOWN ON THE PLAT OF SPRUCE HILLS AS RECORDED IN PLAT BOOK 11, PAGE 45 OF THE PUBLIC RECORDS OF BREVARD COUNTY, FLORIDA

PLAT BOOK 49, PAGE 43
SHEET 17 OF 17 SHEETS



SEE SHEET 16

SEE SHEET 14

PREPARED BY:
Honeycutt & Associates, Inc.
ENGINEERS • SURVEYORS • PLANNERS
5195 South Washington Avenue • Titusville, FL 32780
(407) 267-6233 Fax (407) 269-7847
CERTIFICATE OF AUTHORIZATION NO. LB 6762