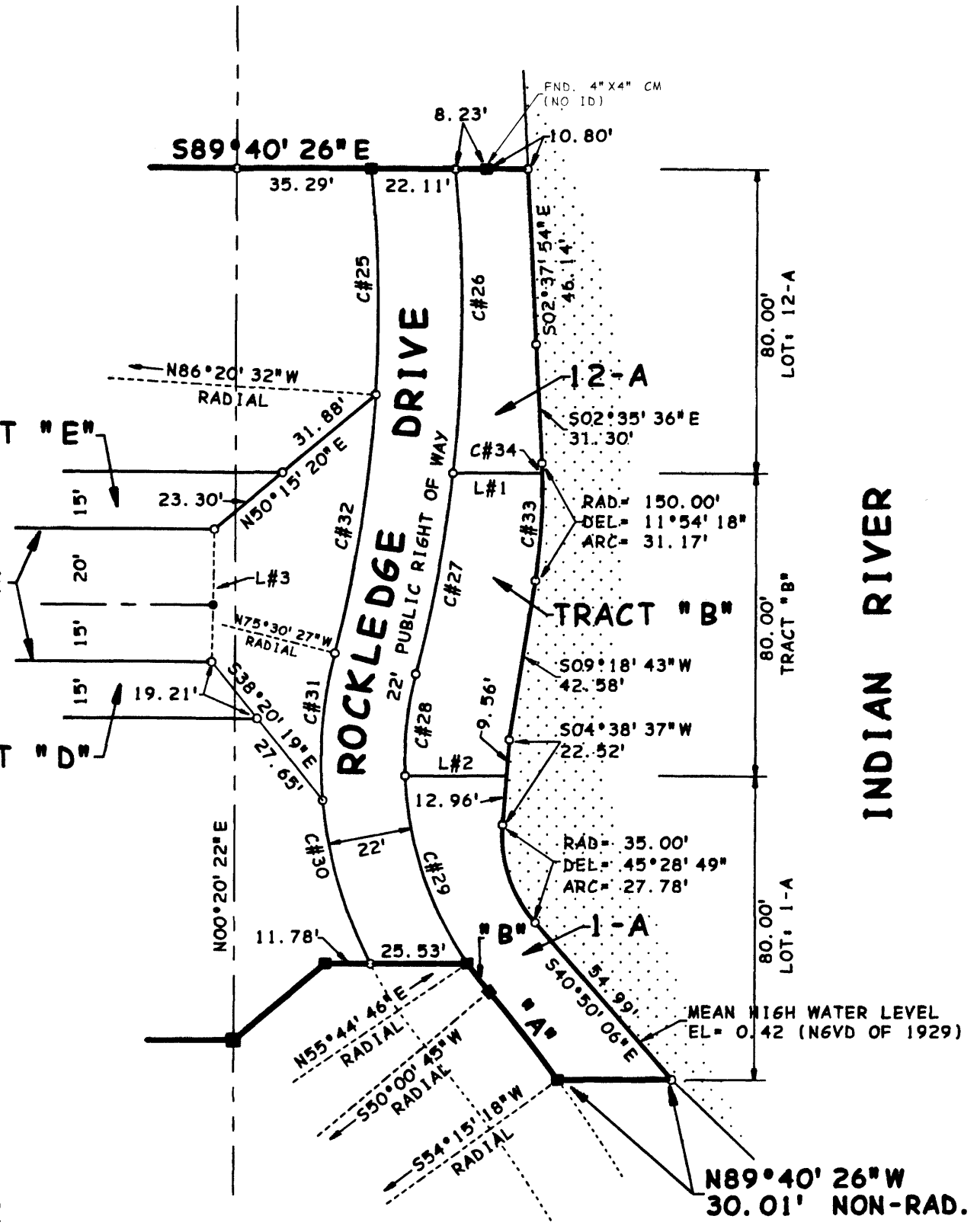
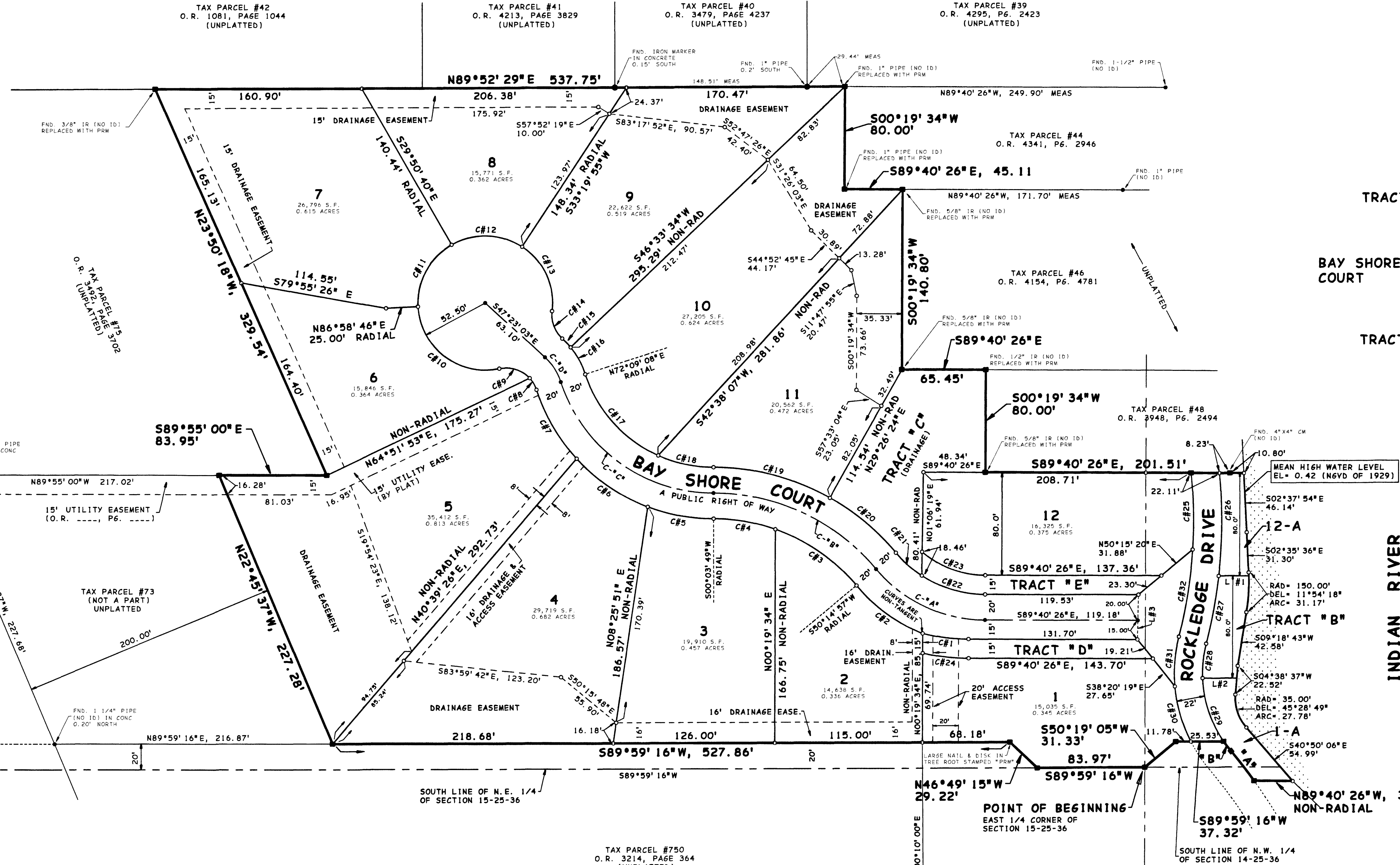
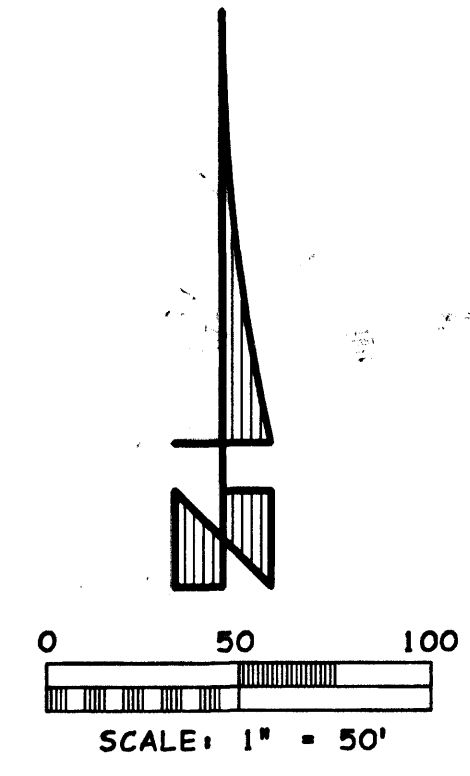


# COQUINA BAY

A SUBDIVISION LYING IN SECTIONS 14 AND 15, TOWNSHIP 25 SOUTH, RANGE 36 EAST, CITY OF ROCKLEDGE, BREVARD COUNTY, FLORIDA.



**CURVE DATA:**

CURVE	RADIUS	DELTA	ARC	TAN	BEARING	CHORD
C #1	150.00'	13°47'51"	36.12'	18.15'	N82°46'30"W	36.04'
C #2	131.00'	28°10'13"	64.41'	32.87'	N53°50'10"W	63.76'
C #3	145.00'	30°44'28"	77.80'	39.86'	N55°07'17"W	76.87'
C #4	145.00'	19°26'40"	49.21'	24.84'	N80°12'51"W	48.97'
C #5	145.00'	20°44'17"	52.48'	26.53'	N79°34'02"W	52.20'
C #6	145.00'	26°38'16"	67.41'	34.33'	N55°52'46"W	66.81'
C #7	145.00'	24°42'46"	62.54'	31.77'	N30°12'15"W	62.06'
C #8	25.00'	24°18'54"	10.61'	5.39'	N30°00'19"W	10.53'
C #9	25.00'	59°43'31"	26.06'	14.35'	N72°01'32"W	24.90'
C #10	52.50'	98°52'04"	90.59'	61.33'	N52°27'16"W	79.76'
C #11	52.50'	63°10'35"	57.89'	32.28'	N88°15'22"W	55.00'
C #12	52.50'	63°47'17"	58.45'	32.67'	N24°46'27"W	55.48'
C #13	25.00'	54°30'15"	23.78'	12.88'	N20°07'56"W	22.90'
C #14	65.00'	08°18'33"	9.43'	4.72'	N43°13'46"W	9.42'
C #15	65.00'	21°13'38"	24.08'	12.18'	N28°27'41"W	23.94'
C #17	105.00'	47°51'17"	87.70'	46.59'	N41°46'31"W	85.17'
C #18	105.00'	24°14'02"	44.41'	22.54'	N77°49'10"W	44.08'
C #19	185.00'	29°22'35"	94.85'	48.49'	N75°14'53"W	93.82'
C #20	185.00'	20°48'33"	67.19'	33.97'	N50°09'20"W	66.82'
C #21	91.00'	17°01'00"	27.03'	13.61'	N48°15'33"W	26.93'
C #22	91.00'	32°54'23"	52.26'	26.88'	N73°13'14"W	51.55'
C #23	76.00'	40°19'48"	53.50'	27.91'	N69°30'32"W	52.40'
C #24	165.00'	12°31'18"	36.06'	18.10'	N83°24'47"W	35.99'
C #25	365.50'	09°20'13"	59.56'	29.85'	N01°00'38"W	59.50'
C #26	387.50'	11°51'00"	80.14'	40.22'	N00°35'17"W	80.00'
C #27	387.50'	07°58'47"	53.97'	27.03'	N10°30'10"E	53.92'
C #28	94.00'	16°33'21"	27.16'	13.68'	N06°12'53"E	27.07'
C #29	94.00'	32°11'26"	52.81'	27.12'	N18°09'31"W	52.12'
C #30	116.00'	22°15'58"	45.08'	22.83'	N16°00'23"W	44.80'
C #31	116.00'	19°21'57"	39.21'	19.79'	N04°48'35"E	39.02'
C #32	365.50'	10°50'05"	69.12'	34.66'	N09°04'31"E	69.10'
C #33	150.00'	10°53'12"	28.50'	14.29'	N03°52'07"E	28.46'
C #34	150.00'	01°01'06"	2.67'	1.33'	N02°05'02"W	2.67'

**CENTERLINE CURVE DATA:**

CURVE	RADIUS	DELTA	ARC	TAN	BEARING	CHORD
C-A*	111.00'	49°55'23"	96.72'	51.67'	N64°42'44"W	93.69'
C-B*	165.00'	50°11'07"	144.52'	77.27'	N64°50'37"W	139.95'
C-C*	125.00'	72°05'19"	157.27'	90.97'	N53°53'31"W	147.10'
C-D*	45.00'	29°32'11"	23.20'	11.86'	N32°36'57"W	22.94'

**LINE TABLE:**

LINE #1	=	S89°40'26"E,	23.48'
LINE #2	=	S89°40'26"E,	26.66'
LINE #3	=	S01°18'44"W,	35.01'

**CURVE "A":**

RAD= 397.10'  
DEL= 04°14'33"  
ARC= 29.40'  
TAN= 14.71'  
BR6= N37°51'58"W  
CHD= 29.40'

**CURVE "B":**

RAD= 94.00'  
DEL= 05°44'01"  
ARC= 9.41'  
TAN= 4.71'  
BR6= N37°07'14"W  
CHD= 9.40'

SECTION 15 SECTION 14

FND. 1-1/2" PIPE (NO ID)

