

# PLANTATION POINT PHASE TWO

A SUBDIVISION LYING IN SECTION 22, TOWNSHIP 25 SOUTH, RANGE 36 EAST, CITY OF ROCKLEDGE, COUNTY OF BREVARD, FLORIDA AND A REPLAT OF TRACT II OF VENTANA PHASE TWO AS RECORDED IN PLAT BOOK 46, PAGES 77-78

**NOTE:**  
PRIOR TO THE RELEASE OF THE PERFORMANCE BOND, ALL LOT CORNER MONUMENTATION WILL BE SET AS 1/2" IRON RODS WITH CAPS MARKED "LB 3608".

**NOTICE:** THIS PLAT, AS RECORDED IN ITS GRAPHIC FORM, IS THE OFFICIAL DEPICTION OF THE SUBDIVIDED LANDS DESCRIBED HEREIN AND WILL IN NO CIRCUMSTANCES BE SUPPLANTED IN AUTHORITY BY ANY OTHER GRAPHIC OR DIGITAL FORM OF THE PLAT. THERE MAY BE ADDITIONAL RESTRICTIONS THAT ARE NOT RECORDED ON THIS PLAT THAT MAY BE FOUND IN THE PUBLIC RECORDS OF THIS COUNTY.

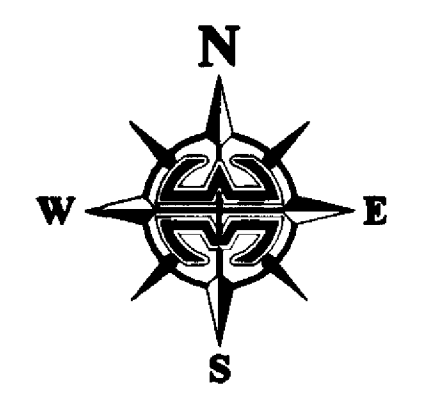
**PREPARED BY:**  
**WILLIAM MOTT LAND SURVEYING INC.**

SATELLITE BEACH PROFESSIONAL CENTER  
1275 SOUTH PATRICK DRIVE, SUITE H  
SATELLITE BEACH, FLORIDA, 32937-3955  
PHONE (321) 773-4333  
PROJECT NUMBER: 2010465  
DRAWING NAME: PLANTATION PH2.DWG  
DRAWN BY: EDWARD A. WHITE  
CHECKED BY: DANIEL D. GARNER, P.S.M. 6189

CURVE	RADIUS	DELTA	LENGTH	CHORD	CHORD BEARING
C1	175.00'	310°38'	9.70'	9.70'	N 88°46'37" E
C2	150.00'	16°08'08"	42.24'	42.10'	S 82°17'52" W
C3	150.00'	16°08'08"	42.24'	42.10'	S 82°17'52" W
C4	50.00'	90°00'00"	78.54'	70.71'	S 45°21'56" W
C5	50.00'	90°00'00"	78.54'	70.71'	S 45°21'56" W
C6	125.00'	16°08'08"	35.20'	35.09'	S 82°17'52" W
C7	175.00'	23°05'57"	7.68'	7.68'	N 75°29'17" E
C8	175.00'	13°37'11"	41.60'	41.50'	N 83°33'20" E
C9	125.00'	16°08'08"	35.20'	35.09'	S 82°17'52" W
C10	175.00'	16°08'08"	49.28'	49.12'	S 82°17'52" W
C11	25.00'	90°00'00"	39.27'	35.36'	S 44°38'04" E
C12	75.00'	28°15'42"	36.99'	36.62'	S 14°28'47" W
C13	75.00'	45°49'31"	59.99'	58.40'	S 51°32'24" W
C14	75.00'	15°54'47"	20.83'	20.78'	S 82°24'33" W
C15	25.00'	90°00'00"	39.27'	35.36'	S 44°38'04" E
C16	25.00'	90°00'00"	39.27'	35.36'	S 44°38'04" E
C17	75.00'	20°55'44"	27.40'	27.24'	N 78°10'13" W
C18	75.00'	45°49'31"	60.09'	58.50'	N 45°45'05" W
C19	75.00'	23°09'45"	30.32'	30.11'	N 11°12'56" W
C20	25.00'	90°23'56"	39.44'	35.48'	S 44°50'02" E
C21	25.00'	90°00'00"	39.27'	35.36'	S 44°38'04" E
C22	25.00'	90°00'00"	39.27'	35.36'	S 44°38'04" E
C23	25.00'	90°00'00"	39.27'	35.36'	S 44°38'04" E
C24	25.00'	90°00'00"	39.27'	35.36'	S 44°38'04" E
C25	25.00'	90°00'00"	39.27'	35.36'	S 44°38'04" E
C26	25.00'	90°00'00"	39.27'	35.36'	S 44°38'04" E
C27	25.00'	90°00'00"	39.27'	35.36'	S 44°38'04" E
C28	25.00'	90°00'00"	39.27'	35.36'	S 44°38'04" E

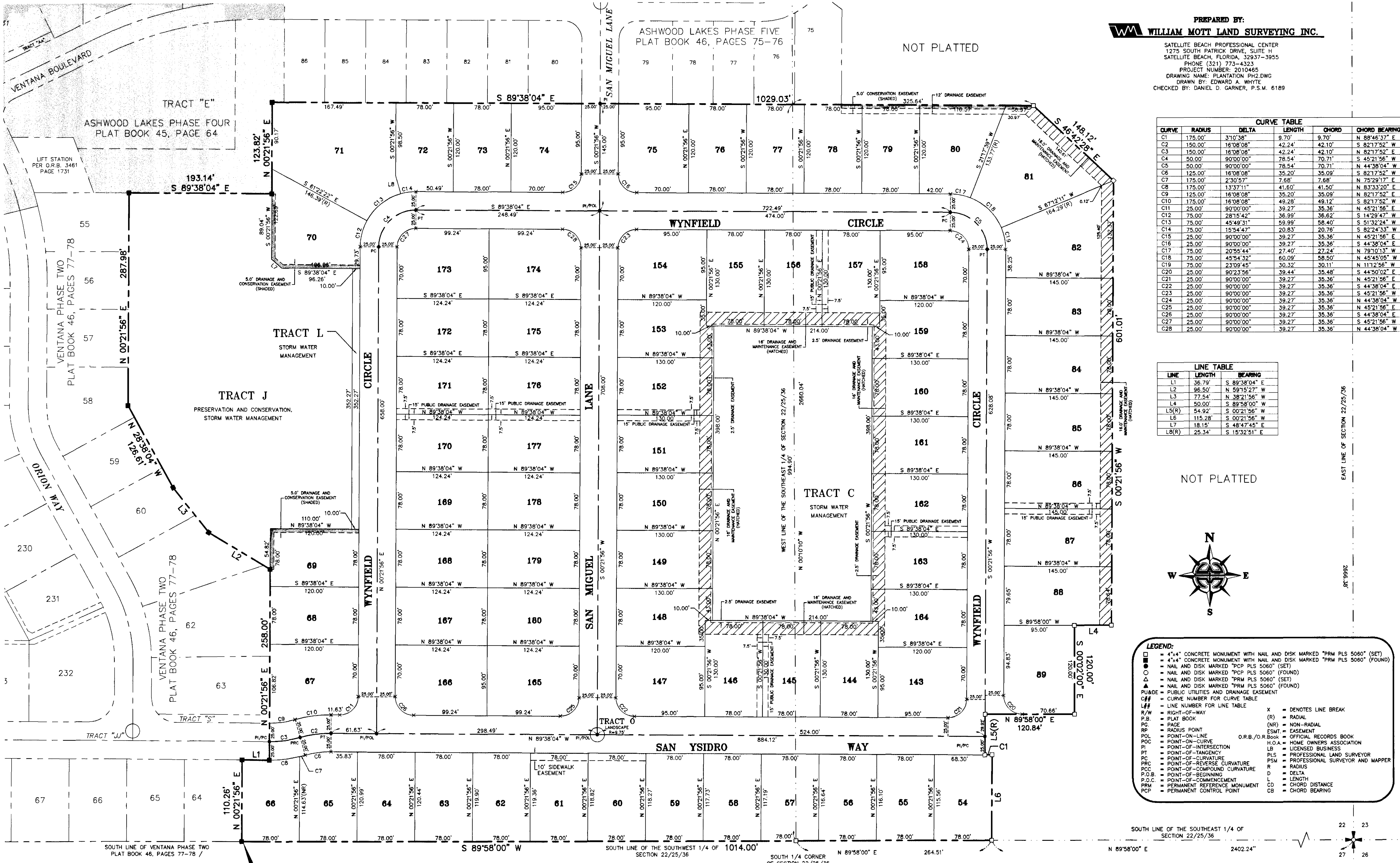
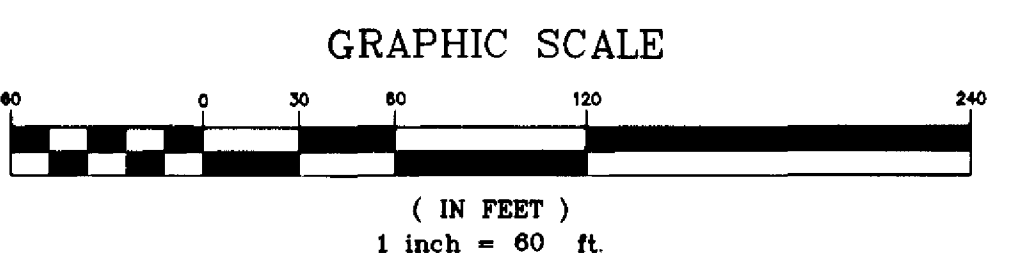
LINE	LENGTH	BEARING
L1	36.79'	S 89°38'04" E
L2	96.50'	N 59°15'27" W
L3	77.54'	N 38°21'56" W
L4	50.00'	S 89°58'00" W
L5(R)	54.92'	S 00°21'56" W
L6	115.28'	S 00°21'56" W
L7	18.15'	S 48°47'45" E
L8(R)	25.34'	S 15°32'51" E

NOT PLATTED



- LEGEND:**
- = 4"x4" CONCRETE MONUMENT WITH NAIL AND DISK MARKED "PRM PLS 5060" (SET)
  - = 4"x4" CONCRETE MONUMENT WITH NAIL AND DISK MARKED "PRM PLS 5060" (FOUND)
  - = NAIL AND DISK MARKED "PCP PLS 5060" (SET)
  - = NAIL AND DISK MARKED "PCP PLS 5060" (FOUND)
  - ▲ = NAIL AND DISK MARKED "PRM PLS 5060" (SET)
  - △ = NAIL AND DISK MARKED "PRM PLS 5060" (FOUND)
  - PUB&DE = PUBLIC UTILITIES AND DRAINAGE EASEMENT
  - C# = CURVE NUMBER FOR CURVE TABLE
  - L# = LINE NUMBER FOR LINE TABLE
  - R/W = RIGHT-OF-WAY
  - P.B. = PLAT BOOK
  - PC = PAGE
  - RP = RADIUS POINT
  - POC = POINT-ON-CURVE
  - PT = POINT-OF-TANGENCY
  - PC = POINT-OF-CURVATURE
  - PRC = POINT-OF-REVERSE CURVATURE
  - POC = POINT-OF-COMPOUND CURVATURE
  - P.O.B. = POINT-OF-BEGINNING
  - P.O.C. = POINT-OF-COMMENCEMENT
  - PRM = PERMANENT REFERENCE MONUMENT
  - PCP = PERMANENT CONTROL POINT
  - X = DENOTES LINE BREAK
  - (R) = RADIAL
  - (NR) = NON-RADIAL
  - ESMT = EASEMENT
  - O.R.B./O.R.Book = OFFICIAL RECORDS BOOK
  - H.O.A. = HOME OWNERS ASSOCIATION
  - LB = LICENSED BUSINESS
  - PLS = PROFESSIONAL LAND SURVEYOR
  - PSM = PROFESSIONAL SURVEYOR AND MAPPER
  - R = RADIUS
  - D = DELTA
  - L = LENGTH
  - CD = CHORD DISTANCE
  - CB = CHORD BEARING

SOUTH LINE OF THE SOUTHEAST 1/4 OF SECTION 22/25/36



**P.O.B.**  
SOUTHEAST CORNER OF LOT 64  
VENTANA PHASE TWO  
PLAT BOOK 46, PAGES 77-78  
SECTION 22, TOWNSHIP 25 SOUTH,  
RANGE 36 EAST

NOT PLATTED