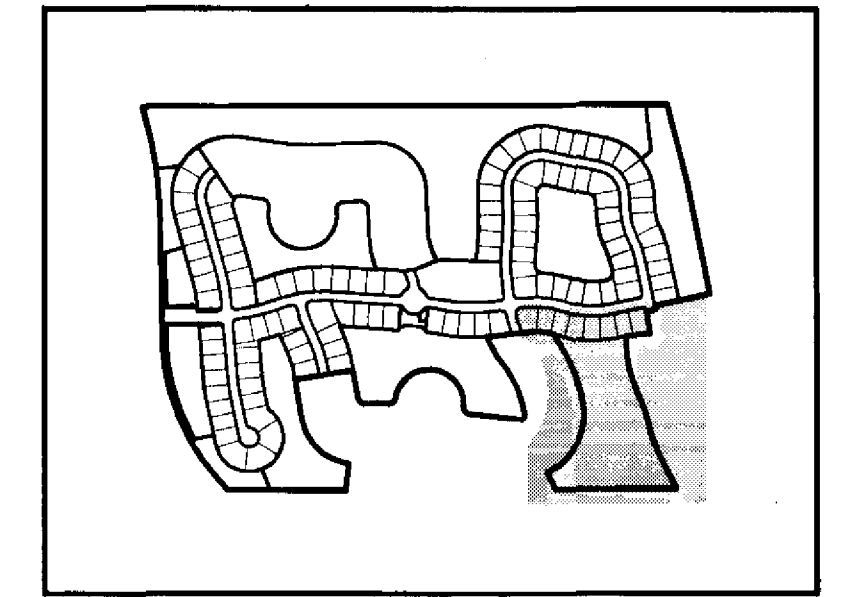
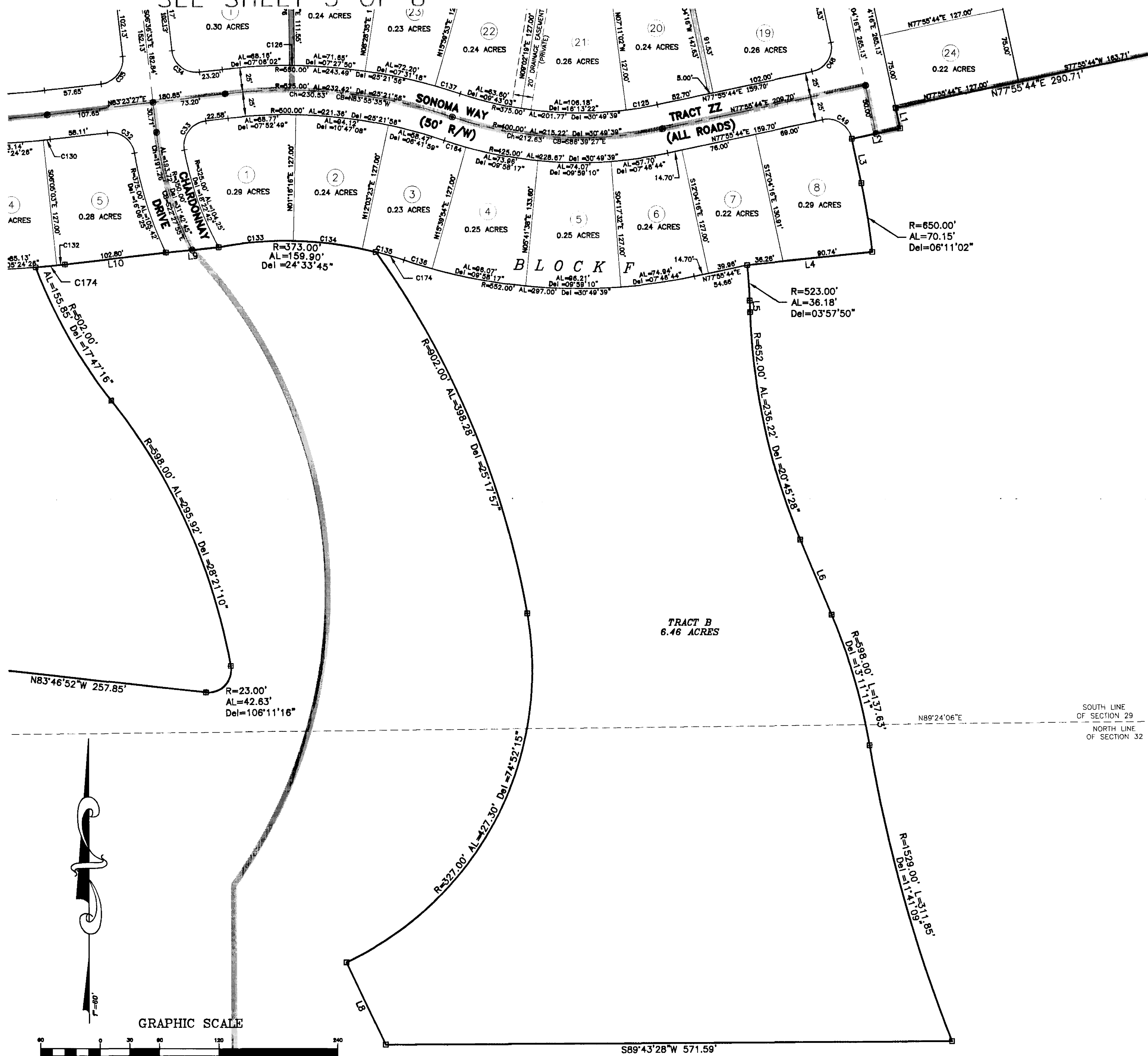


SONOMA AT VIERA - PHASES 1 & 2
VIERA CENTRAL P.U.D. - A PORTION PARCEL 1
SECTIONS 28,29,32 AND 33, TOWNSHIP 25 SOUTH, RANGE 36 EAST
VIERA, BREVARD COUNTY, FLORIDA

PLAT BOOK 49, PAGE 12
 SHEET 8 OF 8
 SECTIONS 28,29,32,33, TWP. 25., RANGE 36 E.

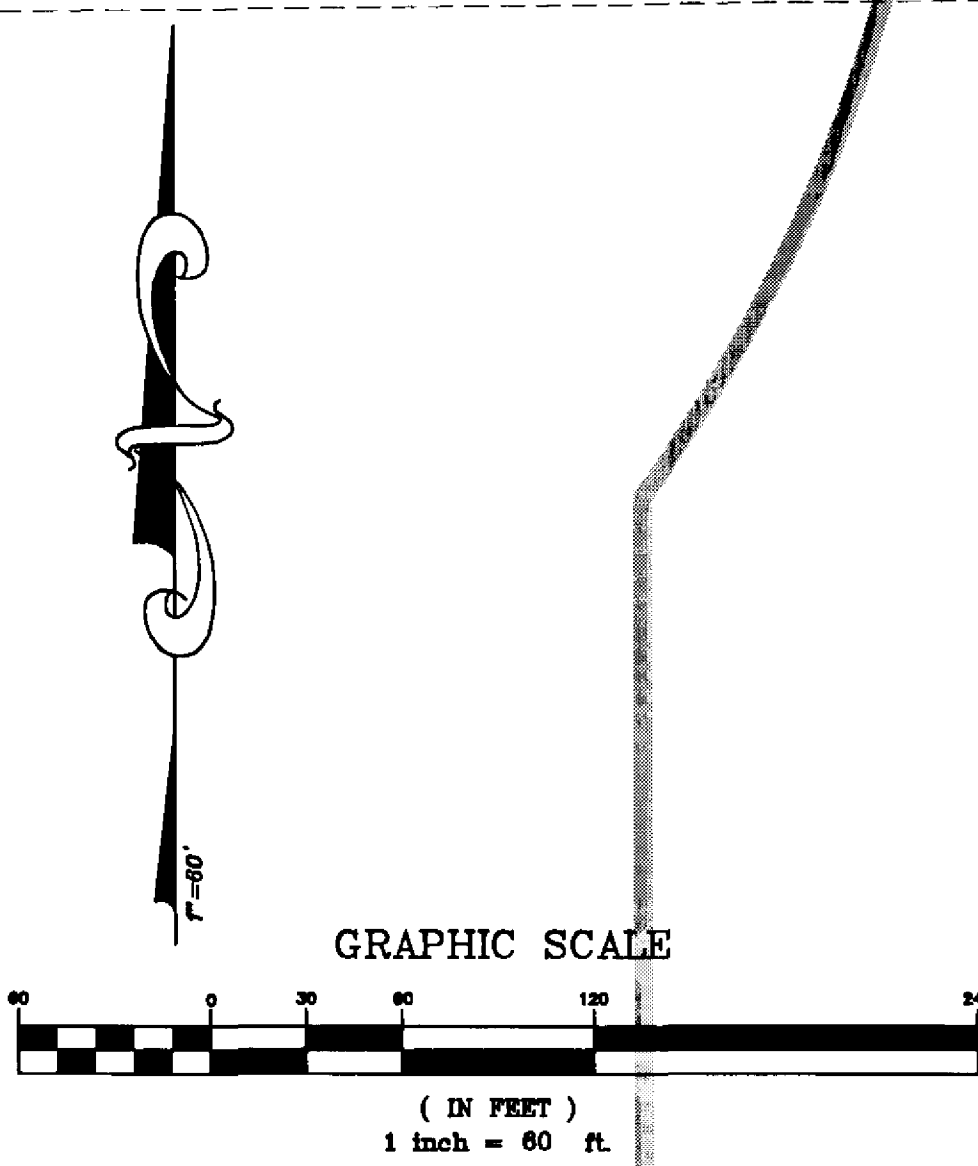
SEE SHEET 5 OF 8



SEE SHEET 7 OF 8

CURVE TABLE					
CURVE	LENGTH	RADIUS	CENTRAL ANGLE	CHORD	BEARING
C32	38.06'	25.00'	87°14'09"	34.48'	N62°58'28"W
C33	40.88'	25.00'	93°41'12"	36.47'	S36°32'51"W
C34	39.27'	25.00'	90°00'00"	35.36'	S51°38'33"E
C35	39.27'	25.00'	90°00'00"	35.36'	N36°23'27"E
C48	39.27'	25.00'	90°00'00"	35.36'	N32°55'44"E
C49	39.27'	25.00'	90°00'00"	35.36'	N57°04'18"W
C125	31.98'	375.00'	04°53'14"	31.98'	N80°22'21"E
C126	5.00'	850.00'	00°31'18"	5.00'	N89°14'53"W
C130	7.10'	775.00'	00°31'30"	7.10'	N83°39'12"E
C132	8.47'	802.00'	00°31'30"	8.47'	N83°38'12"E
C133	78.72'	373.00'	11°37'50"	75.59'	S88°27'21"W
C134	70.21'	373.00'	10°47'08"	70.11'	N83°20'10"W
C135	43.62'	373.00'	06°41'58"	43.59'	N74°38'37"W
C136	28.78'	852.00'	03°08'28"	28.78'	S72°47'22"E
C137	26.48'	850.00'	02°45'28"	26.47'	N72°37'22"W
C164	22.83'	428.00'	03°08'28"	22.83'	S72°47'22"E
C174	28.81'	902.00'	01°52'50"	28.80'	N84°19'52"E
C175	28.84'	823.00'	04°33'12"	28.84'	S73°31'13"E

LINE TABLE		
LINE	BEARING	LENGTH
L1	N12°04'18"W	21.36'
L2	N77°55'44"E	50.00'
L3	S12°04'18"E	48.68'
L4	S84°08'48"W	127.00'
L5	S01°58'24"E	11.87'
L6	S27°40'52"E	81.41'
L8	N25°05'53"W	82.70'
L9	N84°14'38"E	53.68'
L10	N83°23'27"E	102.80'
L83	S12°04'18"E	148.76'
L84	S07°11'02"E	127.00'



UNPLATTED (P.U.D.)

THIS PLAT PREPARED BY
B.S.E. CONSULTANTS, INC.
 CONSULTING, ENGINEERING, LAND SURVEYING
 312 S. Harbor City Blvd., Suite 4, Melbourne, Florida (321) 725-3674

2002 B.S.E. CONSULTANTS, INC. 10582308 8/26/02 43333

DATE: 8/26/02
 B.S.E. DWG. 10582308

SHEET 8 OF 8