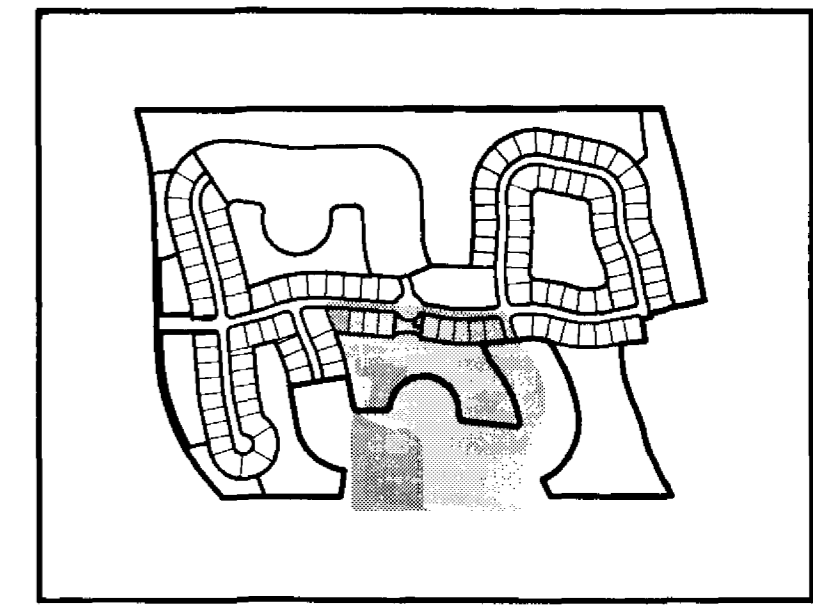
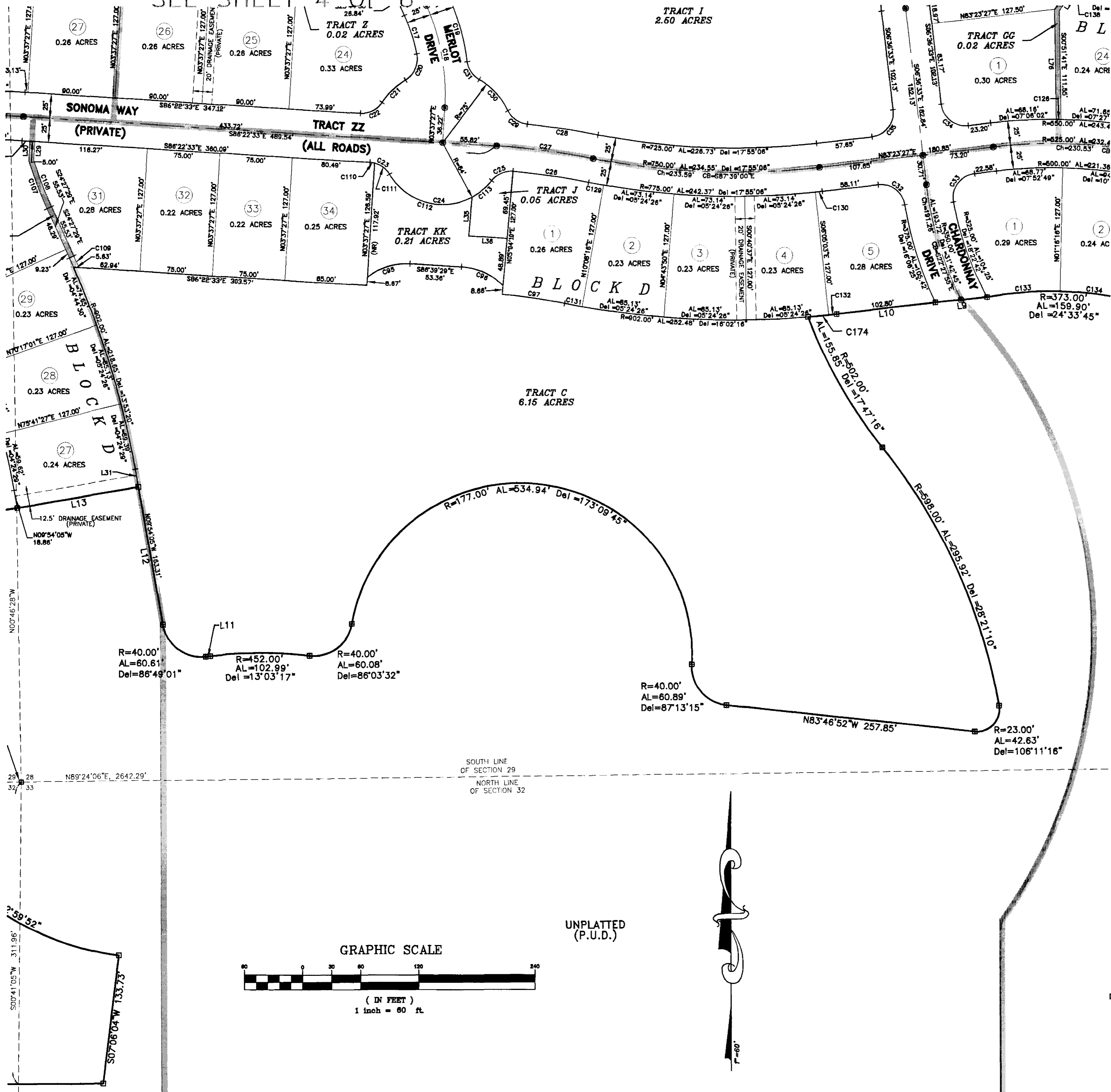


**SONOMA AT VIERA - PHASES 1 & 2**  
**VIERA CENTRAL P.U.D. - A PORTION PARCEL 1**  
**SECTIONS 28,29,32 AND 33, TOWNSHIP 25 SOUTH, RANGE 36 EAST**  
**VIERA, BREVARD COUNTY, FLORIDA**

SEE SHEET 4 OF 8



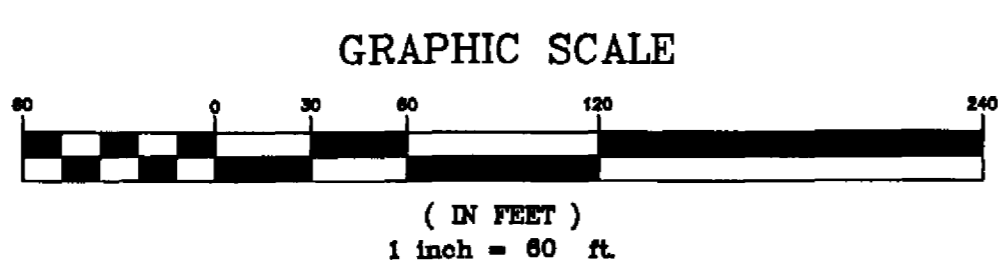
KEY MAP  
N.T.S.

SEE SHEET 8 OF 8

SEE SHEET 6 OF 8

CURVE TABLE					
CURVE	LENGTH	RADIUS	CENTRAL ANGLE	CHORD	BEARING
C17	41.81'	200.00'	11°58'41"	41.74'	N17°45'17"W
C18	107.47'	225.00'	27°22'05"	106.46'	N10°03'36"W
C19	70.76'	250.00'	16°13'05"	70.53'	N15°38'05"W
C20	31.04'	25.00'	71°08'37"	29.09'	N23°48'22"E
C21	33.71'	75.00'	25°45'13"	33.43'	S46°30'04"W
C22	26.18'	25.00'	60°00'00"	25.00'	N63°37'27"E
C23	24.36'	25.00'	55°49'11"	23.40'	N58°27'57"W
C24	124.51'	64.00'	111°27'58"	105.78'	S86°17'21"E
C25	24.51'	25.00'	57°03'30"	23.89'	S88°31'25"W
C26	78.95'	725.00'	06°14'22"	78.91'	N81°48'39"W
C27	100.60'	750.00'	07°41'08"	100.52'	N82°32'00"W
C28	73.78'	775.00'	06°27'17"	73.78'	N81°25'06"W
C29	25.38'	25.00'	58°10'12"	24.31'	S55°03'39"E
C30	44.22'	75.00'	33°46'43"	43.58'	N42°51'55"W
C31	22.79'	25.00'	52°13'43"	22.01'	S33°36'25"E
C32	38.08'	25.00'	87°14'09"	34.48'	N52°58'28"W
C33	40.88'	25.00'	83°41'12"	36.47'	S36°32'51"W
C34	39.27'	25.00'	80°00'00"	35.36'	S51°36'33"E
C35	39.27'	25.00'	80°00'00"	35.36'	N38°23'27"E
C36	44.91'	65.00'	41°20'45"	45.89'	S72°40'08"W
C37	48.25'	65.00'	42°31'58"	47.15'	N85°23'31"W
C38	65.12'	588.00'	06°14'22"	65.09'	N81°48'39"W
C39	53.35'	373.00'	08°11'42"	53.30'	S20°21'38"E
C40	51.76'	368.00'	08°03'32"	51.72'	S20°25'43"E
C41	13.17'	907.00'	07°49'54"	13.17'	N24°02'32"W
C42	4.53'	25.00'	102°03'01"	4.52'	N81°11'03"W
C43	19.63'	25.00'	45°28'11"	19.31'	N52°18'27"W
C44	87.78'	84.00'	87°32'54"	88.55'	S74°19'40"E
C45	26.72'	64.00'	23°58'04"	26.52'	N48°56'12"E
C46	5.00'	550.00'	00°31'18"	5.00'	N88°14'53"W
C47	15.84'	775.00'	01°10'17"	15.84'	S78°16'36"E
C48	7.10'	775.00'	00°31'30"	7.10'	N83°39'12"E
C49	18.44'	902.00'	01°10'17"	18.44'	S78°16'36"E
C50	8.27'	902.00'	00°31'30"	8.27'	N83°39'12"E
C51	75.72'	373.00'	11°37'50"	75.59'	S85°27'21"W
C52	28.61'	902.00'	01°52'50"	28.60'	N84°19'52"E

LINE TABLE		
LINE	BEARING	LENGTH
L8	N84°14'38"E	53.65'
L10	N83°23'27"E	102.80'
L11	N83°18'55"E	4.65'
L12	S09°54'05"E	144.44'
L13	N80°05'55"E	127.00'
L28	N03°37'27"E	18.12'
L30	N03°37'27"E	20.00'
L31	S09°54'05"E	18.86'
L35	S05°05'48"W	40.00'
L36	S88°02'00"E	38.73'
L76	S00°51'41"E	112.65'



UNPLATTED (P.U.D.)



THIS PLAT PREPARED BY

**B.S.E. CONSULTANTS, INC.**  
 CONSULTING, ENGINEERING, LAND SURVEYING  
 312 S. Harbor City Blvd., Suite 4, Melbourne, Florida (321) 725-3874