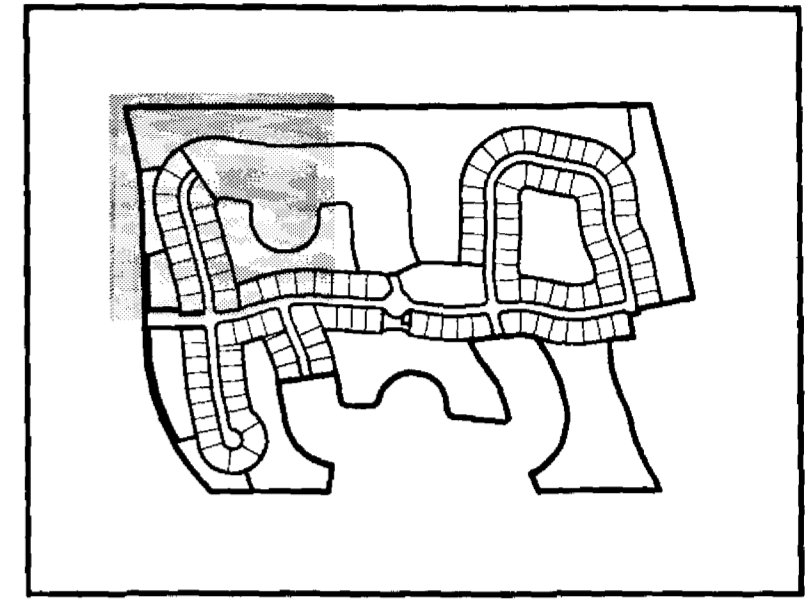
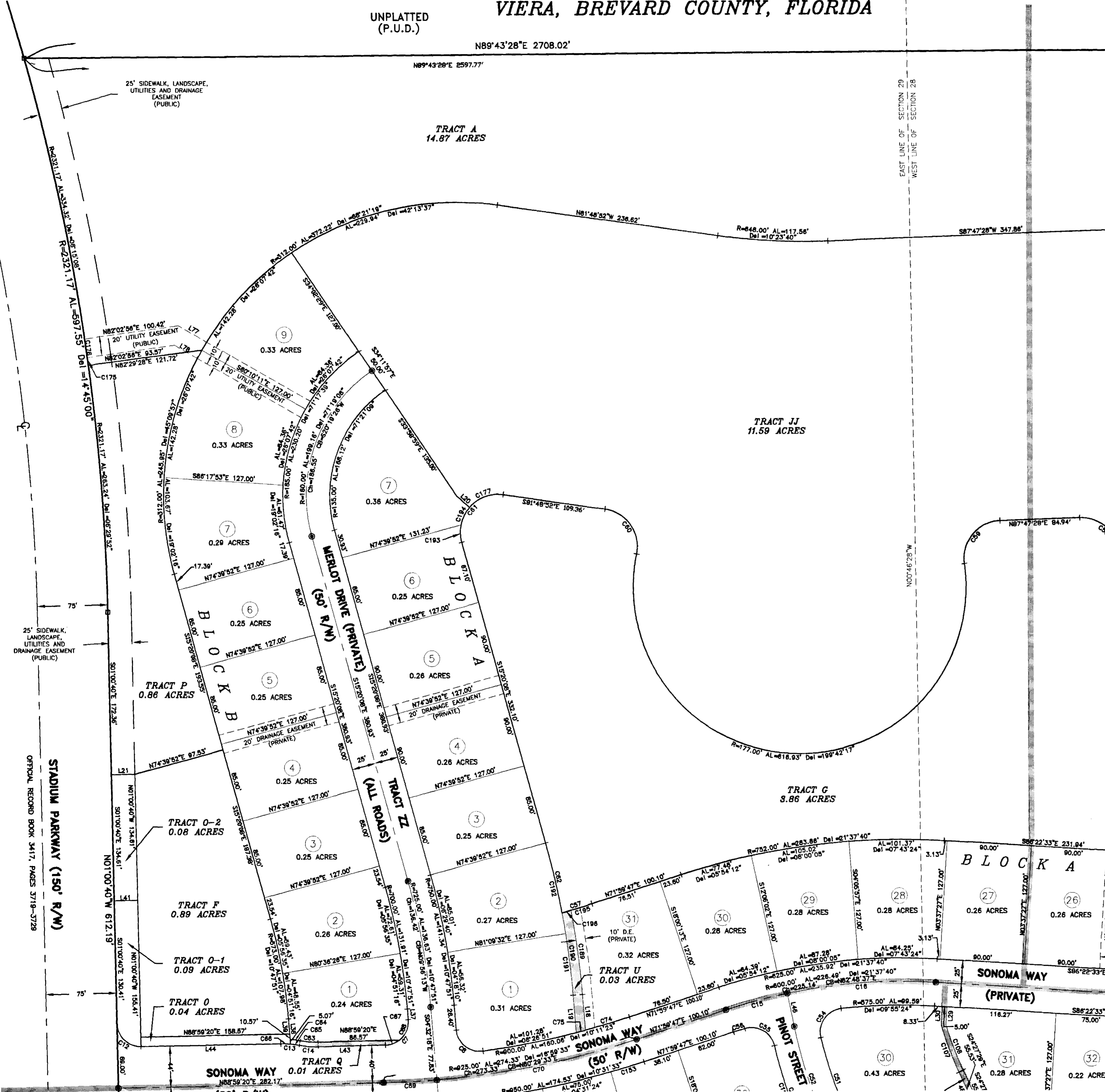


SONOMA AT VIERA - PHASES 1 & 2
VIERA CENTRAL P.U.D. - A PORTION PARCEL 1
SECTIONS 28,29,32 AND 33, TOWNSHIP 25 SOUTH, RANGE 36 EAST
VIERA, BREVARD COUNTY, FLORIDA

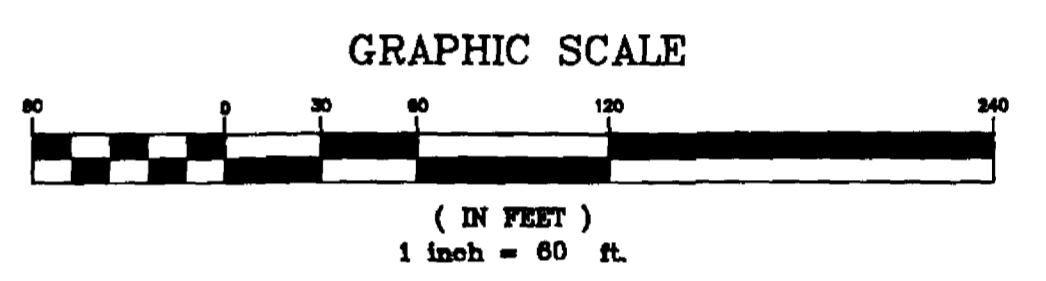
UNPLATTED
 (P.U.D.)

N89°43'28"E 2708.02'



KEY MAP
 N.T.S.

SEE SHEET 4 OF 8



CURVE TABLE					
CURVE	LENGTH	RADIUS	CENTRAL ANGLE	CHORD	BEARING
C07	40.81'	25.00'	85°31'38"	38.43'	N42°13'31"E
C08	40.70'	25.00'	83°18'33"	38.35'	S5°10'34"E
C12	38.27'	25.00'	80°00'50"	35.38'	S45°00'40"E
C13	20.03'	100.00'	11°28'42"	20.00'	N85°16'19"W
C14	20.03'	100.00'	11°28'42"	20.00'	S85°16'19"E
C15	67.64'	600.00'	06°27'32"	67.60'	S75°13'32"W
C16	158.85'	600.00'	15°10'08"	158.39'	S86°02'23"W
C51	85.35'	500.00'	10°55'35"	85.21'	S18°59'42"E
C52	118.32'	525.00'	12°54'48"	118.07'	S18°00'05"E
C54	42.43'	25.00'	87°13'57"	37.51'	S35°05'04"W
C55	40.82'	25.00'	83°33'18"	38.43'	N89°37'32"W
C56	12.72'	75.00'	01°18'03"	12.72'	S72°37'48"W
C57	33.25'	73.00'	02°27'45"	33.22'	N73°13'36"E
C59	88.88'	40.00'	95°46'17"	59.34'	S38°54'18"W
C60	85.30'	40.00'	83°32'20"	58.29'	N35°02'43"W
C61	79.25'	40.00'	113°31'18"	68.81'	S41°25'30"W
C62	76.74'	877.00'	05°00'49"	76.72'	N12°49'44"W
C63	19.03'	85.00'	11°28'42"	19.00'	S85°16'19"E
C64	10.82'	105.00'	05°54'23"	10.82'	N82°28'09"W
C65	9.51'	100.00'	05°28'50"	9.52'	N82°15'23"W
C66	10.53'	100.00'	05°18'32"	10.52'	N87°59'44"W
C67	16.08'	25.00'	36°52'12"	15.81'	N70°33'14"E
C68	24.72'	25.00'	56°39'26"	23.73'	N23°47'25"E
C69	56.84'	925.00'	03°31'38"	56.83'	N87°13'31"E
C70	217.39'	925.00'	13°27'56"	216.89'	N78°43'44"E
C74	48.63'	900.00'	03°05'45"	48.62'	N73°32'39"E
C75	10.16'	900.00'	00°38'48"	10.16'	N75°24'55"E
C84	53.35'	375.00'	08°11'42"	53.30'	S40°21'38"E
C108	51.76'	368.00'	08°03'32"	51.72'	S30°25'43"E
C153	36.80'	850.00'	02°13'32"	36.80'	N73°08'32"E
C175	8.19'	2321.17'	00°12'07"	8.19'	N07°36'58"W
C176	20.00'	2321.17'	00°29'37"	20.00'	N07°57'28"W
C177	39.63'	40.00'	56°45'38"	38.03'	S89°48'19"W
C189	90.52'	887.00'	05°50'49"	90.48'	N07°27'43"W
C190	88.53'	877.00'	05°47'02"	88.49'	N07°25'49"W
C191	85.85'	877.00'	04°18'10"	85.85'	N08°41'23"W
C192	89.41'	877.00'	08°02'40"	89.38'	N12°05'18"W
C193	18.56'	40.00'	28°34'48"	18.39'	S02°02'44"E
C194	21.07'	40.00'	30°10'49"	20.83'	S28°20'05"W
C195	23.17'	773.00'	01°43'04"	23.17'	N12°51'18"E
C196	10.05'	773.00'	00°44'41"	10.05'	N74°08'11"E

LINE TABLE		
LINE	BEARING	LENGTH
L18	S04°32'18"E	38.13'
L19	S04°32'18"E	39.80'
L20	S48°34'30"E	18.38'
L21	S88°59'20"W	25.00'
L29	N03°37'27"E	18.12'
L30	N03°37'27"E	20.00'
L37	S04°32'18"E	11.38'
L38	S04°32'18"E	21.62'
L39	S04°32'18"E	18.11'
L43	N88°58'20"E	71.57'
L44	N88°58'20"E	148.72'
L77	S80°10'11"E	34.80'
L78	N80°10'11"W	27.96'

OFFICIAL RECORD BOOK 3417, PAGES 3718-3728

THIS PLAT PREPARED BY
B.S.E. CONSULTANTS, INC.
 CONSULTING, ENGINEERING, LAND SURVEYING
 312 S. Harbor City Blvd, Suite 4, Melbourne, Florida (321) 725-3874

SEE SHEET 6 OF 8