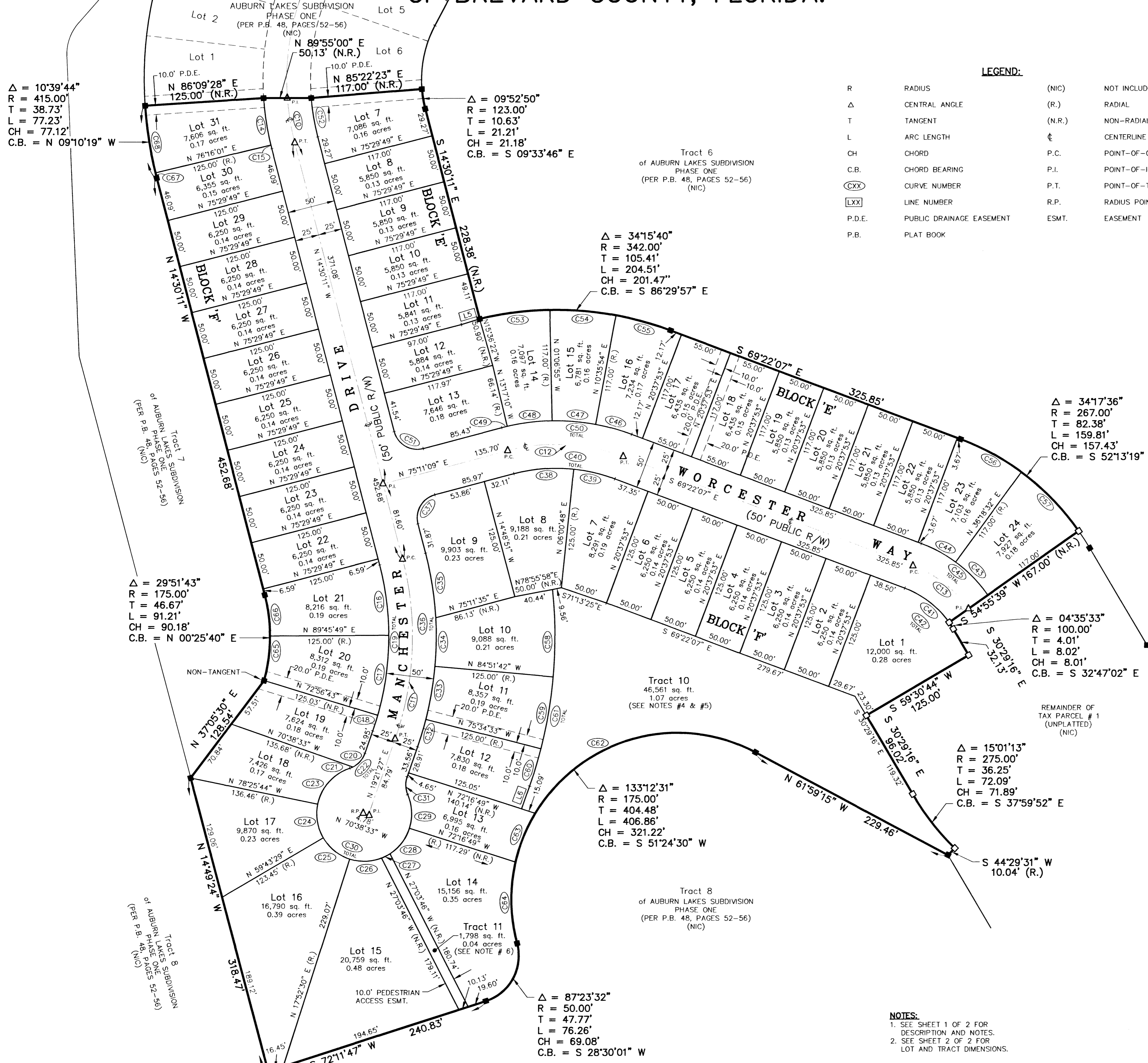


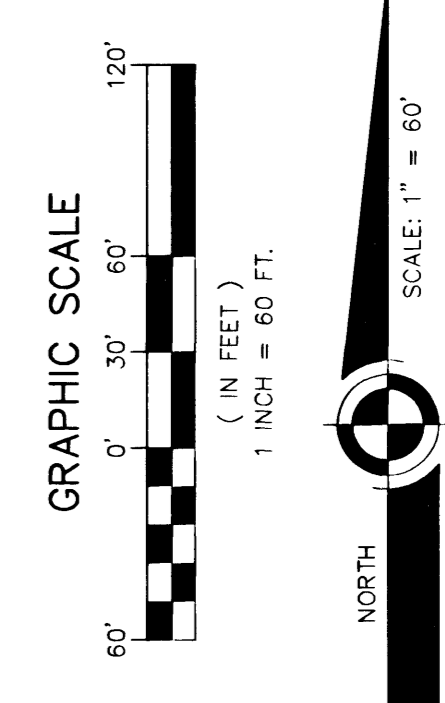
Auburn Lakes Subdivision Phase Two

Viera North P.U.D. Tracts F4 and F5

A SUBDIVISION LYING IN SECTION 27, TOWNSHIP 25 SOUTH, RANGE 36 EAST OF BREVARD COUNTY, FLORIDA.



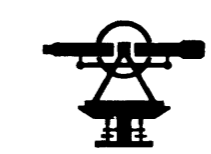
- LEGEND:**
- R RADIUS
 - Δ CENTRAL ANGLE
 - T TANGENT
 - L ARC LENGTH
 - CH CHORD
 - C.B. CHORD BEARING
 - CXX CURVE NUMBER
 - LXX LINE NUMBER
 - P.D.E. PUBLIC DRAINAGE EASEMENT
 - P.B. PLAT BOOK
 - (NIC) NOT INCLUDED
 - (R.) RADIAL
 - (N.R.) NON-RADIAL
 - ☉ CENTERLINE
 - P.C. POINT-OF-CURVATURE
 - P.I. POINT-OF-INTERSECTION
 - P.T. POINT-OF-TANGENCY
 - R.P. RADIUS POINT
 - ESMT. EASEMENT



LINE	BEARING	DISTANCE
L5	N 72°57'00" E	20.02'
L6	S 19°21'11" W	25.34'

CURVE	RADIUS	DELTA	LENGTH	TANGENT	CHORD	BEARING
C10	265.00'	10°18'28"	47.68'	23.90'	47.61'	S 09°20'57" E
C11	325.00'	33°51'38"	192.07'	98.93'	189.28'	N 02°25'38" E
C12	200.00'	35°26'44"	123.73'	63.92'	121.77'	S 87°05'29" E
C13	125.00'	34°17'27"	74.81'	38.56'	73.70'	S 02°13'23" E
C14	290.00'	09°53'28"	50.06'	25.09'	50.00'	S 08°47'08" E
C15	290.00'	00°46'20"	3.91'	1.95'	3.91'	S 14°07'01" E
C16	300.00'	14°16'00"	74.70'	37.54'	74.51'	S 07°22'11" W
C17	300.00'	16°18'07"	85.36'	42.97'	85.07'	S 07°54'52" W
C18	300.00'	03°17'31"	17.24'	8.62'	17.23'	S 17°42'41" W
C19	300.00'	33°51'38"	177.29'	91.32'	174.72'	S 02°25'38" W
C20	25.00'	44°49'16"	19.56'	10.31'	19.06'	S 41°46'05" W
C21	25.00'	08°05'50"	3.53'	1.77'	3.53'	S 68°13'38" W
C22	25.00'	52°55'06"	23.09'	12.44'	22.28'	S 45°49'00" W
C23	50.00'	60°42'05"	52.97'	29.28'	50.53'	S 41°55'30" W
C24	50.00'	41°50'47"	36.52'	19.12'	35.71'	S 09°21'08" E
C25	50.00'	41°50'59"	36.52'	19.12'	35.71'	S 51°12'01" E
C26	50.00'	39°11'55"	34.21'	17.80'	33.54'	S 88°13'38" E
C27	50.00'	11°28'42"	10.02'	5.03'	10.00'	N 62°56'14" E
C28	50.00'	39°28'42"	34.45'	17.94'	33.77'	S 37°27'32" E
C29	50.00'	41°26'38"	36.17'	18.92'	35.38'	N 03°00'08" W
C30	50.00'	276°00'00"	240.86'	45.02'	66.91'	S 65°43'27" E
C31	25.00'	43°04'54"	18.80'	9.81'	18.36'	N 02°11'00" W
C32	350.00'	04°56'02"	30.14'	15.08'	30.13'	N 16°53'27" E
C33	350.00'	09°17'09"	56.72'	28.42'	56.66'	N 09°46'52" E
C34	350.00'	08°23'25"	51.25'	25.67'	51.21'	N 00°56'36" E
C35	350.00'	11°15'04"	68.73'	34.48'	68.62'	N 08°52'39" W
C36	350.00'	33°51'38"	206.84'	106.54'	203.84'	N 02°25'38" E
C37	25.00'	89°41'20"	39.13'	24.86'	35.26'	N 30°20'29" E
C38	175.00'	20°49'40"	63.61'	32.16'	63.26'	N 85°35'59" E
C39	175.00'	14°37'05"	44.65'	22.45'	44.53'	S 76°40'39" E
C40	175.00'	35°26'44"	108.26'	55.93'	106.54'	S 87°05'29" E
C41	100.00'	34°17'18"	59.85'	30.85'	58.96'	S 52°13'28" E
C42	100.00'	38°52'51"	67.86'	35.29'	66.57'	S 49°55'41" E
C43	150.00'	18°37'08"	48.74'	24.59'	48.53'	N 44°23'14" W
C44	150.00'	15°40'19"	41.03'	20.64'	40.90'	N 61°31'57" W
C45	150.00'	38°52'51"	101.79'	52.94'	99.85'	N 49°55'41" W
C46	225.00'	10°02'11"	39.41'	19.76'	39.36'	N 74°23'13" W
C47	225.00'	11°42'47"	46.00'	23.08'	45.92'	N 85°15'42" W
C48	225.00'	12°10'05"	47.78'	23.98'	47.69'	S 82°47'53" W
C49	225.00'	01°31'41"	6.00'	3.00'	6.00'	S 75°57'00" W
C50	225.00'	35°26'44"	139.19'	71.91'	136.99'	N 87°05'29" W
C51	25.00'	00°18'40"	39.41'	25.14'	35.45'	N 59°39'51" W
C52	240.00'	09°52'42"	41.38'	20.74'	41.33'	N 09°33'50" W
C53	342.00'	12°30'45"	74.69'	37.49'	74.54'	N 82°37'36" E
C54	342.00'	11°42'47"	69.92'	35.08'	69.79'	S 85°15'38" E
C55	342.00'	10°02'07"	59.90'	30.03'	59.82'	S 74°23'11" E
C56	267.00'	15°40'28"	73.04'	36.75'	72.82'	S 61°31'53" E
C57	267.00'	18°37'08"	86.76'	43.77'	86.38'	S 44°23'05" E
C58	475.00'	11°08'09"	92.32'	46.31'	92.17'	S 00°25'46" E
C59	475.00'	09°17'09"	76.98'	38.58'	76.90'	S 09°46'52" W
C60	475.00'	04°56'00"	40.90'	20.46'	40.89'	S 16°53'27" W
C61	475.00'	25°21'18"	210.20'	106.85'	208.49'	S 06°40'48" W
C62	175.00'	86°50'02"	265.22'	165.59'	240.56'	S 74°35'45" W
C63	175.00'	18°08'09"	55.39'	27.93'	55.16'	S 22°06'39" W
C64	175.00'	28°14'20"	86.25'	44.02'	85.38'	S 01°04'35" E
C65	175.00'	15°35'43"	47.63'	23.96'	47.49'	N 07°33'40" E
C66	175.00'	14°16'00"	43.57'	21.90'	43.46'	N 07°22'11" W
C67	415.00'	00°46'17"	5.59'	2.79'	5.59'	N 14°07'02" W
C68	415.00'	09°53'26"	71.64'	35.91'	71.55'	N 08°47'11" W

NOTES:
 1. SEE SHEET 1 OF 2 FOR DESCRIPTION AND NOTES.
 2. SEE SHEET 2 OF 2 FOR LOT AND TRACT DIMENSIONS.



Bussen-Mayer Engineering Group
 100 PARNELL STREET • MERRITT ISLAND, FLORIDA 32953
 PH. NO.: (321) 453-0010