

STRATFORD POINTE PHASE FOUR

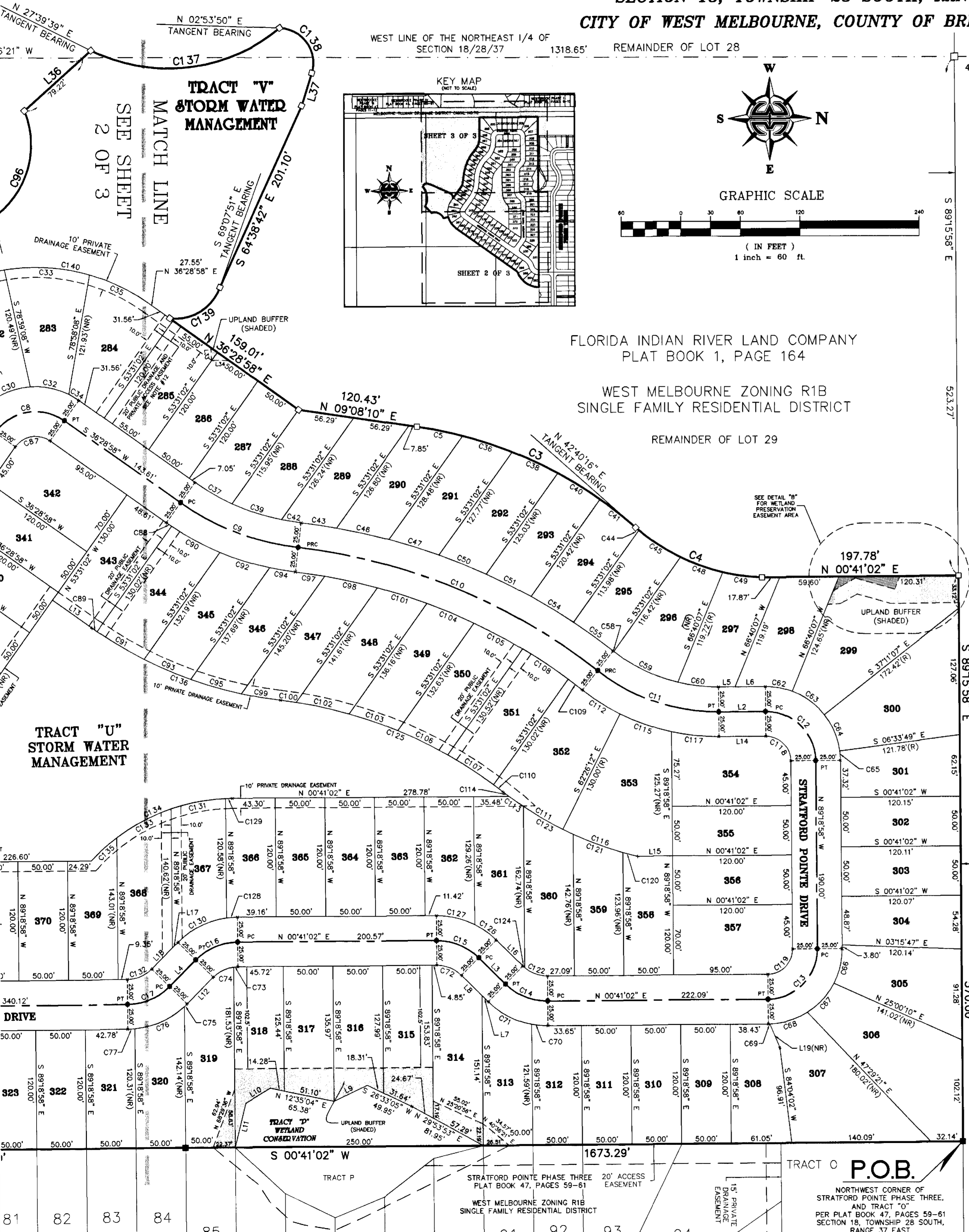
A REPLAT OF A PORTION OF LOTS 19, 20, 28, 29 AND 30

FLORIDA INDIAN RIVER LAND COMPANY, PLAT BOOK 1, PAGE 164

SECTION 18, TOWNSHIP 28 SOUTH, RANGE 37 EAST

CITY OF WEST MELBOURNE, COUNTY OF BREVARD, FLORIDA.

NOTICE: THIS PLAT, AS RECORDED IN ITS GRAPHIC FORM, IS THE OFFICIAL DEPICTION OF THE SUBDIVIDED LANDS DESCRIBED HEREIN AND WILL IN NO CIRCUMSTANCES BE SUPPLANTED IN AUTHORITY BY ANY OTHER GRAPHIC OR DIGITAL FORM OF THE PLAT. THERE MAY BE ADDITIONAL RESTRICTIONS THAT ARE NOT RECORDED ON THIS PLAT THAT MAY BE FOUND IN THE PUBLIC RECORDS OF THIS COUNTY.



CURVE	RADIUS	DELTA	LENGTH	CHORD	CHORD BEARING
C1	220.00'	73°10'09"	280.95'	262.24'	N 52°43'55" W
C2	195.00'	40°10'18"	136.72'	133.94'	N 33°25'53" W
C3	420.00'	33°35'37"	246.25'	242.74'	S 25°55'58" W
C4	201.11'	39°47'21"	139.66'	136.87'	S 22°46'35" W
C5	420.00'	62°06'07"	471.77'	471.15'	S 12°21'13" W
C6	75.00'	75°03'57"	98.26'	91.38'	S 51°47'01" E
C7	125.00'	39°16'00"	85.67'	84.00'	N 33°53'02" W
C8	50.00'	90°00'00"	78.54'	70.71'	S 08°31'02" E
C9	255.00'	28°46'58"	128.10'	126.76'	N 22°05'29" E
C10	600.00'	31°33'28"	330.47'	326.31'	S 23°28'44" W
C11	195.00'	38°34'26"	131.28'	128.82'	N 19°58'15" E
C12	50.00'	90°00'00"	78.54'	70.71'	S 45°41'02" W
C13	50.00'	90°00'00"	78.54'	70.71'	N 44°18'58" W
C14	60.00'	45°00'00"	47.12'	45.92'	N 23°11'02" E
C15	60.00'	45°00'00"	47.12'	45.92'	S 23°11'02" W
C16	60.00'	45°00'00"	47.12'	45.92'	S 21°48'58" E
C17	60.00'	45°00'00"	47.12'	45.92'	N 21°48'58" W
C18	50.00'	35°47'56"	31.24'	30.73'	N 18°35'00" E
C19	100.00'	23°04'24"	40.27'	40.00'	S 77°46'47" E
C20	220.00'	23°04'24"	88.60'	88.00'	S 77°46'47" E
C21	100.00'	23°04'26"	40.27'	40.00'	S 54°42'22" E
C22	220.00'	23°04'26"	88.60'	88.00'	S 54°42'22" E
C23	100.00'	23°04'26"	40.27'	40.00'	S 31°37'56" E
C24	220.00'	23°04'26"	88.60'	88.00'	S 31°37'56" E
C25	100.00'	5°50'41"	10.20'	10.20'	S 17°10'22" E
C26	220.00'	3°56'52"	15.16'	15.16'	S 18°07'17" E
C27	100.00'	39°16'00"	68.53'	67.20'	N 33°53'02" W
C28	75.00'	19°54'50"	26.07'	25.94'	S 43°33'37" E
C29	195.00'	19°54'50"	67.78'	67.43'	S 43°33'37" E
C30	75.00'	30°34'32"	40.02'	39.55'	S 18°19'56" E
C31	195.00'	25°26'45"	86.60'	85.89'	S 20°52'49" E
C32	75.00'	30°34'32"	40.02'	39.55'	S 12°15'36" W
C33	195.00'	25°27'58"	86.67'	85.96'	S 04°34'32" W
C34	75.00'	8°56'06"	11.70'	11.68'	S 32°00'55" W
C35	195.00'	19°10'27"	65.26'	64.95'	S 26°53'44" W
C36	420.00'	7°09'01"	52.41'	52.38'	S 19°08'47" W
C37	230.00'	10°45'46"	43.20'	43.14'	N 31°06'05" E
C38	420.00'	6°56'12"	50.85'	50.82'	S 26°11'24" W
C39	230.00'	13°04'27"	52.48'	52.37'	N 19°10'58" E
C40	420.00'	6°50'13"	50.12'	50.09'	S 33°04'37" W
C41	420.00'	6°14'03"	45.70'	45.68'	S 39°36'45" W
C42	230.00'	4°56'46"	19.85'	19.85'	N 10°10'22" E
C43	625.00'	31°04'32"	36.19'	36.19'	S 09°21'32" W
C44	201.11'	11°52'25"	4.41'	4.41'	N 42°02'33" E
C45	201.11'	14°17'33"	5.07'	5.04'	N 34°16'04" E
C46	625.00'	4°58'49"	54.33'	54.31'	S 13°30'28" W
C47	625.00'	4°49'23"	52.61'	52.60'	S 18°24'34" W
C48	201.11'	12°52'33"	45.20'	45.10'	N 20°41'01" E
C49	201.11'	11°21'49"	39.89'	39.82'	N 08°33'49" E
C50	625.00'	4°42'41"	51.39'	51.38'	S 23°10'36" W
C51	625.00'	4°38'15"	50.59'	50.57'	S 27°51'04" W
C52	220.00'	6°19'45"	24.30'	24.29'	S 63°04'43" E
C53	195.00'	9°18'39"	31.58'	31.54'	S 48°52'43" E
C54	625.00'	4°35'48"	50.14'	50.12'	S 32°28'04" W
C55	625.00'	4°29'31"	49.00'	48.99'	S 37°00'43" W
C56	220.00'	0°57'53"	3.70'	3.70'	S 20°34'39" E
C57	205.00'	21°34'48"	7.98'	7.98'	S 18°58'49" E
C58	170.00'	10°20'34"	1.02'	1.02'	N 39°05'11" E
C59	170.00'	24°20'12"	72.21'	71.67'	N 26°44'48" E
C60	170.00'	13°53'39"	41.23'	41.12'	N 07°37'52" E
C61	205.00'	3°06'48"	11.14'	11.14'	S 16°18'30" E
C62	75.00'	21°07'47"	27.66'	27.50'	S 11°14'56" W
C63	75.00'	31°00'04"	40.58'	40.09'	S 37°18'51" W
C64	75.00'	30°37'18"	40.08'	39.61'	S 68°07'32" W
C65	75.00'	7°14'51"	9.49'	9.48'	S 87°03'27" W
C66	75.00'	27°39'09"	36.20'	36.85'	N 72°29'24" W
C67	75.00'	30°34'32"	40.02'	39.55'	N 46°22'33" W
C68	75.00'	30°34'32"	40.02'	39.55'	N 15°48'02" W
C69	75.00'	11°14'48"	1.57'	1.57'	N 00°05'08" E
C70	85.00'	11°05'18"	16.45'	16.42'	N 06°13'41" E

CURVE	RADIUS	DELTA	LENGTH	CHORD	CHORD BEARING
C71	85.00'	33°54'42"	50.31'	49.58'	N 28°43'41" E
C72	35.00'	45°00'00"	27.49'	26.79'	S 23°11'02" W
C73	35.00'	70°11'31"	4.29'	4.29'	S 02°49'34" E
C74	35.00'	37°58'47"	23.20'	22.78'	S 25°19'34" E
C75	85.00'	2°41'16"	3.99'	3.99'	N 42°58'20" W
C76	85.00'	37°28'24"	55.54'	54.56'	N 22°54'30" W
C77	85.00'	4°52'20"	7.23'	7.23'	N 01°45'08" W
C78	75.00'	30°34'32"	40.02'	39.55'	N 15°58'18" E
C79	75.00'	51°3'24"	6.84'	6.83'	N 33°52'16" E
C80	25.00'	90°00'00"	39.27'	35.36'	S 08°31'02" E
C81	150.00'	1°30'18"	3.94'	3.94'	N 52°45'54" W
C82	150.00'	37°45'43"	98.86'	97.08'	N 33°07'53" W
C83	50.00'	75°03'57"	65.51'	60.92'	S 51°47'01" E
C84	25.00'	16°57'20"	7.40'	7.37'	N 09°09'42" E
C85	25.00'	18°50'36"	8.22'	8.16'	N 27°33'40" E
C86	25.00'	90°00'00"	39.27'	35.36'	N 81°28'58" E
C87	25.00'	90°00'00"	39.27'	35.36'	S 08°31'02" E
C88	280.00'	11°8'30"	6.39'	6.39'	S 35°49'43" E
C89	410.00'	0°53'37"	6.39'	6.39'	N 36°02'09" E
C90	280.00'	11°21'26"	55.50'	55.41'	N 29°29'44" E
C91	410.00'	7°43'06"	55.23'	55.19'	N 31°43'48" E
C92	280.00'	10°46'38"	52.67'	52.59'	N 18°25'42" E
C93	410.00'	7°09'11"	51.19'	51.15'	N 24°17'39" E
C94	280.00'	5°20'24"	26.10'	26.09'	N 10°22'11" E
C95	410.00'	7°24'59"	53.07'	53.03'	N 17°00'34" E
C96	90.00'	90°26'10"	142.06'	127.76'	N 66°00'21" W
C97	575.00'	2°58'49"	29.91'	29.91'	S 09°11'24" W
C98	575.00'	5°25'06"	54.36'	54.36'	S 13°23'11" W
C99	410.00'	5°36'05"	40.00'	40.07'	N 10°30'02" E
C100	445.00'	2°02'05"	15.80'	15.80'	S 08°43'02" W
C101	575.00'	5°14'01"	52.52'	52.50'	S 18°42'55" W
C102	445.00'	7°00'39"	54.45'	54.42'	S 13°14'23" W
C103	445.00'	6°42'50"	52.15'	52.12'	S 20°06'08" W
C104	575.00'	5°06'25"	51.25'	51.23'	S 23°53'07" W
C105	575.00'	5°31'38"	55.47'	55.45'	S 29°12'09" W
C106	445.00'	7°11'00"	55.79'	55.75'	S 27°03'03" W
C107	445.00'	7°05'30"	55.08'	55.04'	S 34°11'18" W
C108	575.00'	5°29'07"	55.05'	55.03'	S 34°42'31" W
C109	575.00'	1°48'24"	18.13'	18.13'	S 38°21'16" W
C110	445.00'	11°31'25"	11.83'	11.83'	S 38°04'45" W
C111	350.00'	11°41'39"	71.44'	71.51'	N 33°24'38" E
C112	220.00'	11°41'39"	44.90'	44.82'	N 33°24'38" E
C113	350.00'	2°56'04"	17.93'	17.92'	N 36°34'22" E
C114	350.00'	11°3'04"	7.44'	7.44'	N 38°38'56" E
C115	220.00'	14°19'05"	54.98'	54.83'	N 20°24'16" E
C116	350.00'	13°09'01"	80.33'	80.15'	N 20°59'18" E
C117	220.00'	12°33'41"	48.23'	48.14'	N 06°57'37" E
C118	25.00'	90°00'00"	39.27'	35.36'	S 45°41'02" W
C119	25.00'	90°00'00"	39.27'	35.36'	N 44°18'58" W
C120	350.00'	2°30'18"	15.30'	15.30'	N 15°39'56" E
C121	350.00'	8°45'12"	53.47'	53.42'	N 21°17'41" E
C122	35.00'	40°53'42"	24.98'	24.45'	N 21°07'53" E
C123	350.00'	9°26'03"	57.63'	57.56'	N 30°23'18" E
C124	35.00'	4°06'18"	2.51'	2.51'	N 43°37'53" E
C125	445.00'	31°33'28"	245.10'	242.01'	S 23°28'44" W
C126	85.00'	18°00'15"	26.71'	26.60'	S 36°40'54" W
C127	85.00'	26°59'45"	40.05'	39.68'	S 14°10'54" W
C128	85.00'	7°19'46"	10.87'	10.87'	S 02°58'51" E
C129	195.00'	1°58'10"	6.70'	6.70'	S 00°18'03" E
C130	85.00'	37°40'14"	55.89'	54.88'	S 25°28'51" E
C131	195.00'	16°28'37"	56.08'	55.88'	S 09°31'27" E
C132	35.00'	45°00'00"	27.49'	26.79'	N 21°48'58" W
C133	195.00'	18°18'50"	62.33'	62.06'	S 26°55'10" E
C134	195.00'	46°54'43"	159.66'	155.24'	S 22°48'19" E
C135	195.00'	10°09'06"	34.65'	34.60'	S 41°09'08" E
C136	410.00'	28°46'58"	205.97'	203.81'	N 22°05'29" E
C137	175.00'	68°23'37"	202.78'	191.63'	N 05°32'08" W
C138	35.00'	105°27'18"	64.42'	55.70'	S 55°37'29" W
C139	47.88'	76°46'57"	64.16'	59.47'	S 30°44'23" E
C140	195.00'	49°49'42"	169.59'	164.29'	S 11°30'47" W

LINE	LENGTH	BEARING
L1	63.64'	S 38°03'22" E
L2	47.15'	N 00°41'02" E
L3	37.68'	S 45°41'02" W
L4	37.68'	N 44°18'58" W
L5	16.70'	S 00°41'02" W
L6	30.46'	S 00°41'02" W
L7	8.83'	S 44°18'58" W
L8	28.85'	N 45°41'02" E
L9	37.14'	S 24°47'22" E
L10	29.03'	S 30°00'43" E
L11	45.84'	S 75°20'36" E
L12	37.68'	N 44°18'58" W
L13	48.61'	S 36°28'58" W
L14	47.15'	S 00°41'02" W
L15	35.22'	N 00°41'02" E
L16	37.68'	N 45°41'02" E
L17	8.12'	S 44°18'58" W
L18	29.56'	N 44°18'58" W
L19(NR)	25.73'	S 68°05'03" W
L20(NR)	25.11'	S 83°14'20" E
L21	12.77'	S 06°36'34" E
L22	18.14'	S 06°36'34" E
L23	38.84'	S 67°57'40" E
L24	51.63'	S 67°57'40" E
L25	51.49'	S 39°41'03" E
L26	50.03'	S 55°24'52" E
L27	23.97'	S 55°24'52" E
L28	27.85'	S 74°15'35" E
L29	21.56'	S 22°58'13" E
L30	8.64'	S 58°07'5