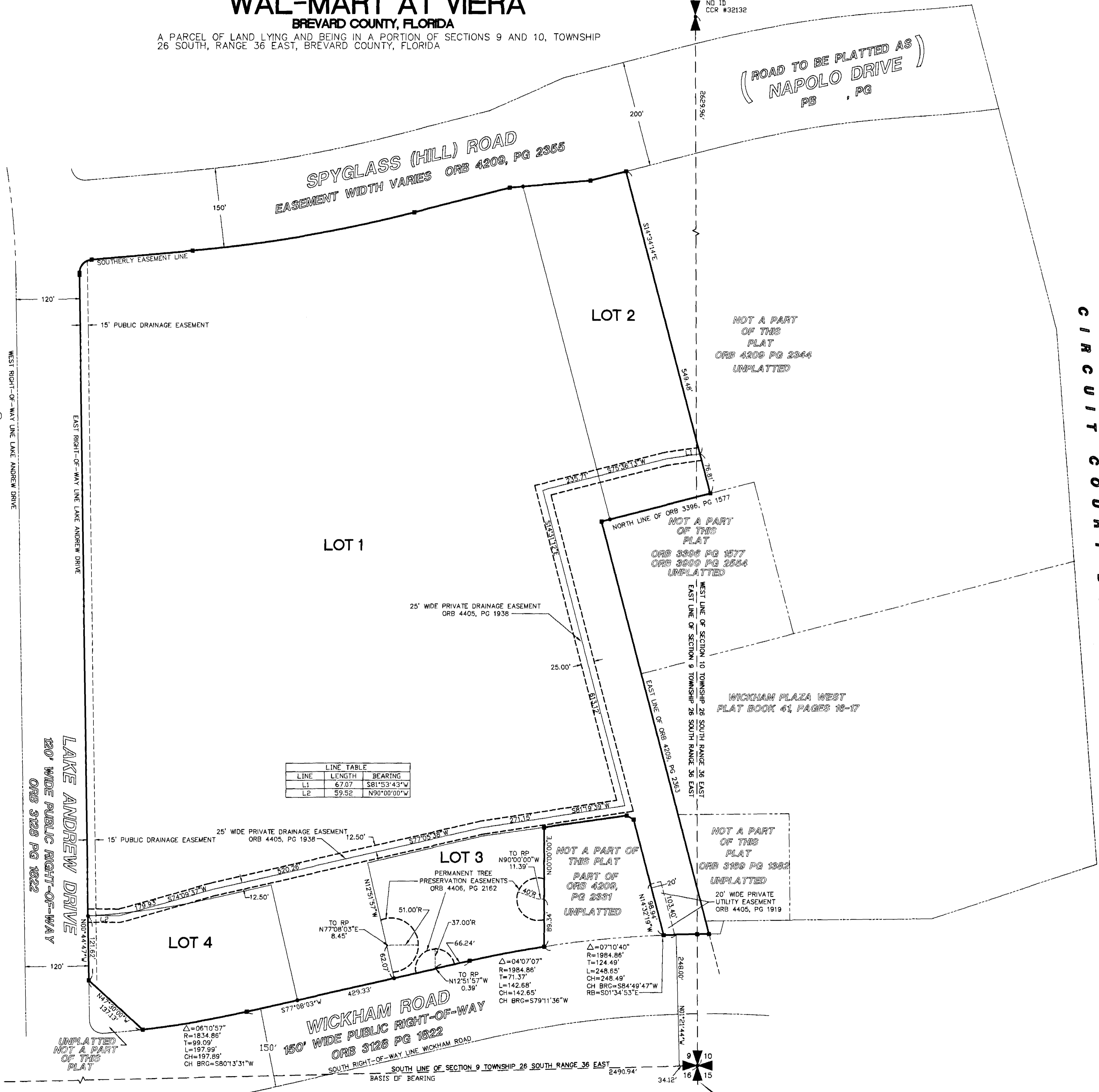


# WAL-MART AT VIERA

BREVARD COUNTY, FLORIDA

A PARCEL OF LAND LYING AND BEING IN A PORTION OF SECTIONS 9 AND 10, TOWNSHIP 26 SOUTH, RANGE 36 EAST, BREVARD COUNTY, FLORIDA

NORTHEAST CORNER OF THE SOUTHEAST 1/4 SECTION 9-26-36 FOUND 4"x4" CONCRETE MONUMENT NO. ID CCR #32132



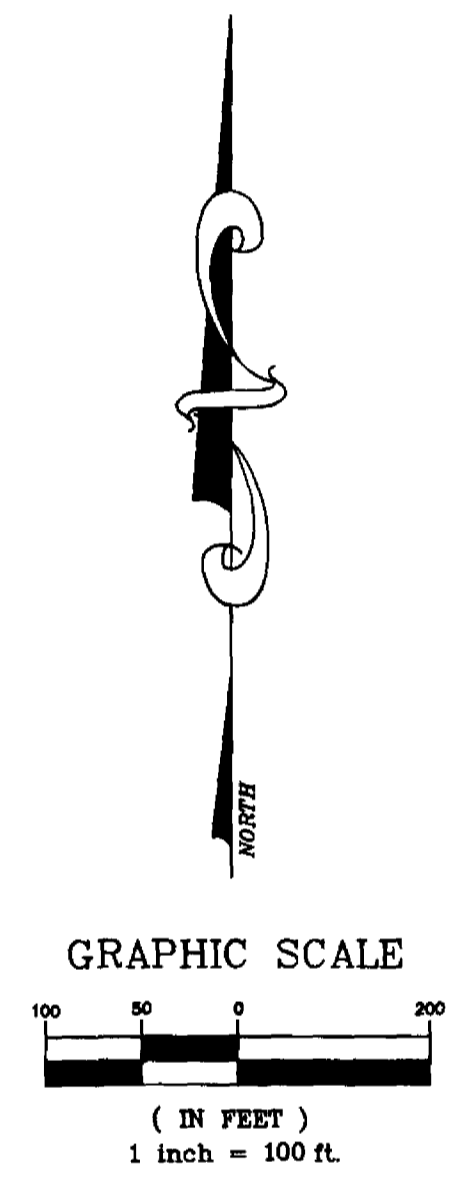
### LEGEND OF SYMBOLS

- = DENOTES PERMANENT REFERENCE MONUMENT 4"x4" CONCRETE MONUMENT STAMPED "PRM ECD PSM 5179" (UNLESS OTHERWISE SHOWN)
- = DENOTES 5/8" IRC STAMPED "LB 696"
- = PROPERTY LINE
- - - = RIGHT-OF-WAY LINE
- - - = ADJACENT PROPERTY LINE
- - - = CENTERLINE

### ABBREVIATIONS

- CH CHORD
- CH BRG CHORD BEARING
- Δ DELTA ANGLE
- DWG DRAWING
- E EAST
- ECD E.C. DEMETER
- INC INCORPORATED
- IRC IRON ROD WITH CAP
- L LENGTH
- LB LICENSED BUSINESS
- N NORTH
- ORB OFFICIAL RECORD BOOK
- PB PLAT BOOK
- PCP PERMANENT CONTROL POINT
- PG PAGE
- PK PARKER KALON
- PRM PERMANENT REFERENCE MONUMENT 4"x4" CONCRETE MONUMENT STAMPED "PRM ECD PSM 5179"
- POB POINT OF BEGINNING
- PC POINT OF CURVATURE
- PCC POINT OF COMPOUND CURVATURE
- POC POINT OF COMMENCEMENT
- PSM PROFESSIONAL SURVEYOR AND MAPPER
- R RADIUS
- RB RADIAL BEARING
- RNG RANGE
- RP RADIUS POINT
- S SOUTH
- SEC SECTION
- SR STATE ROAD
- T TANGENT
- TWP TOWNSHIP
- US UNITED STATES
- W WEST

LINE	LENGTH	BEARING
L1	67.07	S81°53'43"W
L2	59.52	N90°00'00"W



CIRCUIT COURT BOOK 53 PAGE 359-363

SOUTHWEST CORNER OF THE SOUTHEAST 1/4 SECTION 9-26-36 FOUND 4"x4" CONCRETE MONUMENT NO. ID CCR #34588

**Kimley-Horn and Associates, Inc**  
 E.C. DEMETER PSM #5179  
 601 21st Street, Suite 400, Vero Beach, FL 32960  
 Phone (561)562-7981 LB 696 Fax (561)562-9689

P.O.C.  
 SOUTHEAST CORNER OF SECTION 9-26-36 FOUND 4"x4" CONCRETE MONUMENT NO. ID CCR #27032

**NOTICE:**  
 THIS PLAT, AS RECORDED IN ITS GRAPHIC FORM, IS THE OFFICIAL DEPICTION OF THE SUBDIVIDED LANDS DESCRIBED HEREIN AND WILL IN NO CIRCUMSTANCES BE SUPPLANTED IN AUTHORITY BY ANY OTHER GRAPHIC OR DIGITAL FORM OF THE PLAT. THERE MAY BE ADDITIONAL RESTRICTIONS THAT ARE NOT RECORDED ON THIS PLAT THAT MAY BE FOUND IN THE PUBLIC RECORDS OF THIS COUNTY.