

OCEANSIDE VILLAGE PHASE THREE-A

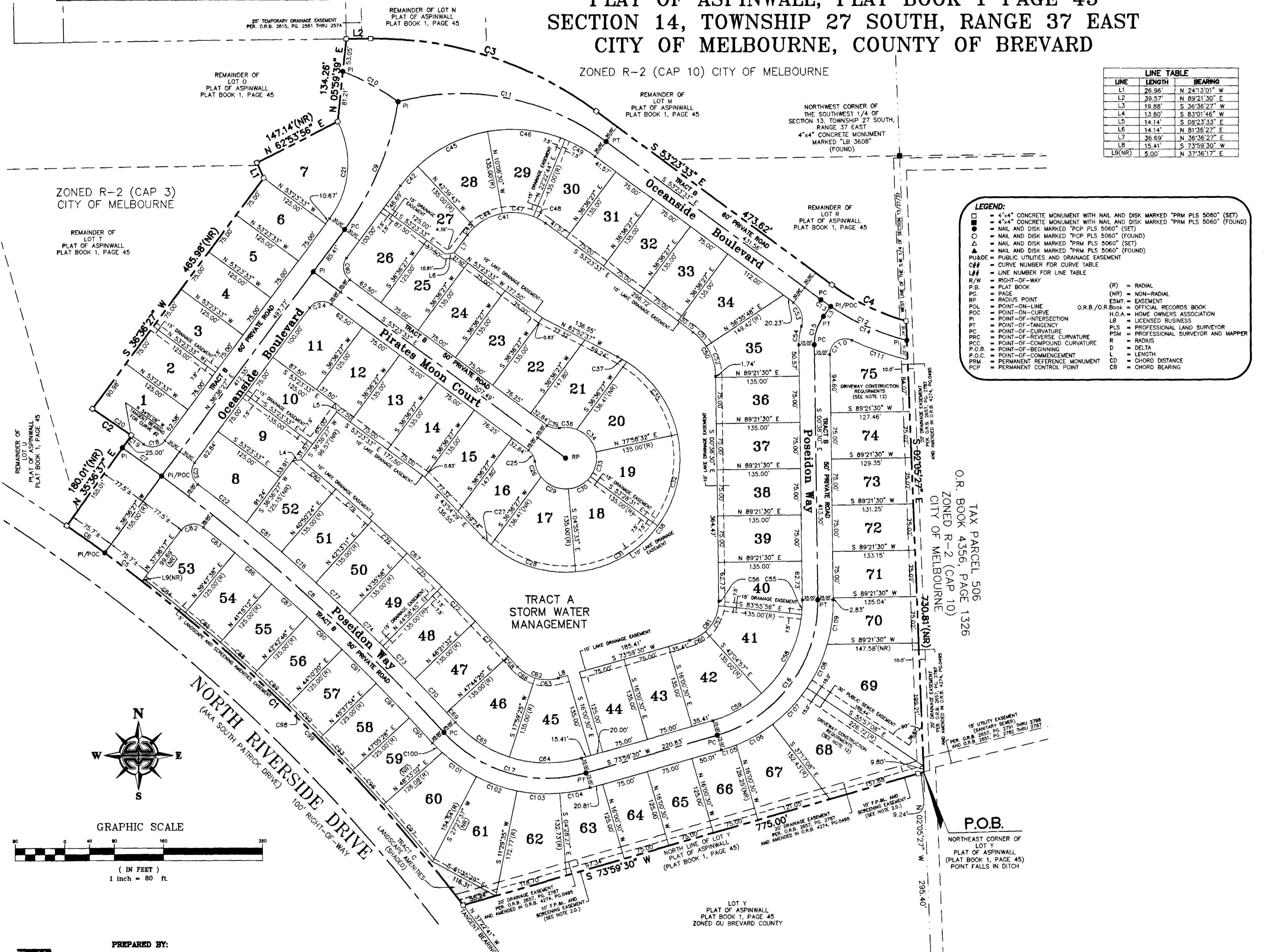
A REPLAT OF LOTS S & W AND A PORTION OF LOTS M, N, O, R, T, U & X

PLAT OF ASPINWALL, PLAT BOOK 1 PAGE 45

SECTION 14, TOWNSHIP 27 SOUTH, RANGE 37 EAST

CITY OF MELBOURNE, COUNTY OF BREVARD

NOTICE: THIS PLAT, AS RECORDED IN ITS GRAPHIC FORM, IS THE OFFICIAL DEPICTION OF THE SUBDIVIDED LANDS DESCRIBED HEREIN AND WILL IN NO CIRCUMSTANCES BE SUPPLANTED IN AUTHORITY BY ANY OTHER GRAPHIC OR DIGITAL FORM OF THE PLAT. THERE MAY BE ADDITIONAL RESTRICTIONS THAT ARE NOT RECORDED ON THIS PLAT THAT MAY BE FOUND IN THE PUBLIC RECORDS OF THIS COUNTY.

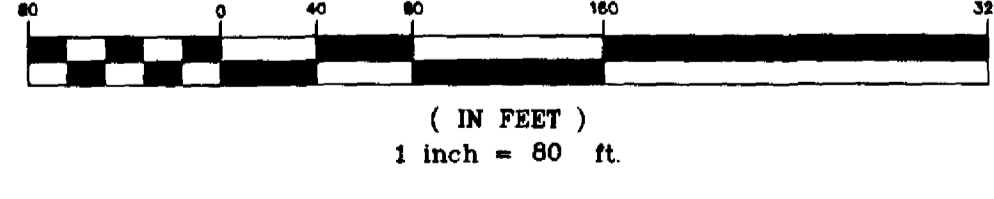


LINE	LENGTH	BEARING
L1	26.96'	N 24°13'01" W
L2	39.57'	N 89°21'30" E
L3	19.88'	S 36°36'27" W
L4	13.80'	S 83°01'46" W
L5	14.14'	S 08°23'33" E
L6	14.14'	N 81°36'27" E
L7	36.69'	N 36°36'27" E
L8	15.41'	S 73°59'30" W
LB(NR)	5.00'	N 37°36'17" E

CURVE	RADIUS	DELTA	LENGTH	CHORD	CHORD BEARING
C1	2914.49'	17°30'11"	890.34'	886.88'	N 46°07'47" W
C2	3094.49'	17°44'00"	76.21'	76.20'	N 55°33'29" W
C3	600.00'	37°14'57"	390.07'	383.24'	S 72°01'02" E
C4	370.00'	20°45'19"	134.03'	133.30'	S 63°46'12" E
C5	2914.49'	17°29'19"	75.73'	75.72'	N 52°38'53" W
C6	2914.49'	17°29'19"	75.73'	75.72'	N 54°08'33" W
C7	3069.49'	17°29'19"	78.42'	78.42'	N 54°07'28" W
C8	3069.49'	11°31'25"	617.36'	616.32'	N 47°37'50" W
C9	467.95'	27°48'00"	227.05'	224.83'	N 22°42'27" E
C10	387.03'	15°05'43"	101.97'	101.67'	N 61°17'15" W
C11	396.53'	51°11'40"	354.31'	342.64'	N 78°59'23" W
C12	400.00'	22°08'29"	154.58'	153.62'	S 64°27'48" E
C13	400.00'	2°43'20"	19.01'	19.00'	S 54°47'54" E
C14	400.00'	19°22'28"	135.26'	134.61'	S 65°50'48" E
C15	75.00'	37°14'57"	48.76'	47.90'	S 17°58'58" W
C16	225.00'	74°38'00"	293.08'	272.80'	N 36°40'30" E
C17	225.00'	64°08'22"	251.88'	238.93'	S 73°56'19" E
C18	25.00'	88°59'23"	38.83'	35.04'	N 81°06'09" E
C19	3094.49'	0°26'58"	24.30'	24.30'	N 54°37'00" W
C20	3094.49'	1°51'59"	100.50'	100.50'	N 55°19'59" W
C21	150.00'	63°37'28"	166.57'	158.14'	N 04°47'43" E
C22	3094.49'	1°51'39"	100.50'	100.50'	N 51°27'07" E
C23	25.00'	88°59'23"	38.83'	35.04'	S 07°53'15" E
C24	25.00'	90°00'00"	39.27'	35.36'	S 81°36'27" W
C25	25.00'	48°11'23"	21.03'	20.41'	N 29°17'52" E
C26	50.00'	32°14'17"	28.13'	27.76'	S 21°19'19" E
C27	175.00'	4°56'27"	15.04'	15.04'	S 46°25'37" E
C28	175.00'	46°02'13"	140.61'	136.86'	S 71°54'27" E
C29	50.00'	57°29'06"	50.17'	48.09'	S 66°11'01" E
C30	50.00'	48°32'57"	42.37'	41.11'	N 60°47'58" E
C31	175.00'	48°32'57"	148.29'	143.89'	N 60°47'58" E
C32	175.00'	48°32'57"	148.29'	143.89'	N 60°47'58" E
C33	42.37'	41°11'23"	41.11'	41.11'	N 12°15'00" E
C34	50.00'	57°19'10"	50.02'	47.96'	N 04°41'04" W
C35	175.00'	45°52'17"	140.11'	136.39'	N 34°57'37" W
C36	50.00'	32°14'17"	28.13'	27.76'	N 85°27'47" E
C37	175.00'	4°56'27"	15.04'	15.04'	N 60°21'29" W
C38	175.00'	198°51'20"	607.37'	545.27'	N 36°36'27" E
C39	25.00'	48°11'23"	21.03'	20.41'	S 77°29'15" E
C40	25.00'	90°00'00"	39.27'	35.36'	S 08°23'33" E
C41	100.00'	90°00'00"	157.08'	141.42'	S 81°36'27" W
C42	225.00'	10°43'50"	42.14'	42.08'	S 41°58'22" W
C43	100.00'	10°43'50"	18.73'	18.70'	S 41°58'22" W
C44	100.00'	32°31'13"	56.76'	56.00'	S 63°35'53" W
C45	225.00'	32°31'13"	127.71'	126.00'	S 63°35'53" W
C46	225.00'	32°31'13"	127.71'	126.00'	S 63°35'53" W
C47	100.00'	32°31'13"	56.76'	56.00'	S 63°35'53" W
C48	100.00'	141°34'33"	24.83'	24.77'	N 60°30'25" W
C49	225.00'	141°34'33"	55.88'	55.73'	N 60°30'25" W
C50	100.00'	52°45'03"	92.07'	88.85'	N 27°01'02" W
C51	100.00'	19°59'21"	34.89'	34.71'	N 43°23'53" W
C52	100.00'	32°45'42"	57.18'	56.40'	N 17°01'21" W
C53	35.00'	70°15'59"	42.92'	40.28'	N 18°15'34" W
C54	100.00'	17°30'56"	30.57'	30.45'	S 08°06'58" W
C55	200.00'	6°42'34"	23.42'	23.41'	N 02°42'47" E
C56	75.00'	6°42'34"	8.78'	8.78'	N 02°42'47" E
C57	75.00'	41°50'59"	54.78'	53.57'	N 28°59'33" E
C58	200.00'	41°50'59"	146.08'	142.86'	N 28°59'33" E
C59	200.00'	26°04'27"	91.02'	90.62'	N 42°57'04" W
C60	75.00'	26°04'27"	54.13'	53.52'	N 42°57'04" W
C61	75.00'	74°38'00"	97.69'	90.83'	N 36°40'30" E
C62	75.00'	64°08'22"	83.96'	79.64'	S 73°56'19" E
C63	75.00'	33°59'55"	44.50'	43.85'	S 89°00'33" E
C64	200.00'	33°59'55"	118.68'	116.94'	S 89°00'33" E
C65	200.00'	30°08'27"	105.21'	104.00'	S 56°56'21" E
C66	75.00'	30°08'27"	39.45'	39.00'	S 56°56'21" E
C67	3219.49'	8°45'51"	492.46'	491.98'	N 46°15'03" W
C68	3219.49'	0°23'33"	22.05'	22.05'	N 42°03'54" W
C69	3094.49'	0°23'33"	21.19'	21.19'	N 42°03'54" W
C70	3094.49'	1°22'47"	74.52'	74.52'	N 42°57'04" W
C71	3219.49'	1°22'47"	77.53'	77.53'	N 42°57'04" W
C72	3219.49'	1°22'47"	77.53'	77.53'	N 42°57'04" W
C73	3094.49'	1°22'47"	74.52'	74.52'	N 44°19'51" W
C74	3094.49'	1°22'47"	74.52'	74.52'	N 45°42'38" W
C75	3219.49'	1°22'47"	77.53'	77.53'	N 45°42'38" W
C76	3219.49'	1°22'47"	77.53'	77.53'	N 47°05'26" W
C77	3094.49'	1°22'47"	74.52'	74.52'	N 47°05'26" W
C78	3094.49'	1°22'47"	74.52'	74.52'	N 48°28'13" W
C79	3219.49'	1°22'47"	77.53'	77.53'	N 48°28'13" W
C80	3219.49'	1°28'22"	82.76'	82.76'	N 49°53'48" W
C81	3094.49'	1°21'41"	73.52'	73.52'	N 49°50'27" W
C82	25.00'	90°56'56"	39.68'	35.65'	S 83°04'45" W
C83	3044.49'	11°42'25"	65.91'	65.91'	N 50°49'35" W
C84	2919.49'	11°42'25"	66.55'	66.54'	N 51°03'19" W
C85	2919.49'	1°27'34"	74.37'	74.36'	N 49°28'35" W
C86	3044.49'	1°27'34"	77.55'	77.55'	N 49°28'35" W
C87	3044.49'	1°27'34"	77.55'	77.55'	N 48°01'01" W
C88	2919.49'	1°27'34"	74.37'	74.36'	N 48°01'01" W
C89	2919.49'	1°27'34"	74.37'	74.36'	N 46°33'27" W
C90	3044.49'	1°27'34"	77.55'	77.55'	N 45°05'53" W
C91	3044.49'	1°27'34"	77.55'	77.55'	N 45°05'53" W
C92	2919.49'	1°27'34"	74.37'	74.36'	N 45°05'53" W
C93	2919.49'	1°27'34"	74.37'	74.36'	N 43°38'19" W
C94	3044.49'	1°27'34"	77.55'	77.55'	N 43°38'19" W
C95	3044.49'	1°02'24"	55.27'	55.27'	N 42°23'20" W
C96	2919.49'	1°27'34"	74.37'	74.36'	N 42°10'45" W
C97	2919.49'	2°23'04"	121.49'	121.48'	N 40°15'26" W
C98	2919.49'	1°25'22"	65.42'	65.06'	N 45°29'06" W
C99	2914.49'	1°41'33"	738.89'	736.91'	N 44°38'27" W
C100	250.00'	5°36'54"	22.32'	22.31'	S 44°25'35" E
C101	250.00'	15°33'22"	62.88'	62.67'	S 54°45'42" E
C102	250.00'	15°58'02"	69.67'	69.44'	S 70°31'24" E
C103	250.00'	15°58'02"	69.67'	69.44'	S 86°29'26" E
C104	250.00'	11°21'03"	50.33'	50.24'	N 79°45'32" E
C105	250.00'	5°44'11"	25.03'	25.02'	N 71°07'24" E
C106	250.00'	15°32'27"	67.81'	67.60'	N 60°29'05" E
C107	250.00'	18°39'59"	81.45'	81.09'	N 60°29'05" E
C108	250.00'	17°54'41"	78.15'	77.83'	N 25°05'32" E
C109	250.00'	16°46'42"	73.21'	72.95'	N 07°44'51" E
C110	430.00'	116°36'32"	50.88'	42.54'	S 57°39'46" E
C111	430.00'	12°41'10"	95.21'	95.01'	S 70°22'33" E

LEGEND:

- 4"x4" CONCRETE MONUMENT WITH NAIL AND DISK MARKED "PRM PLS 5060" (SET)
- 4"x4" CONCRETE MONUMENT WITH NAIL AND DISK MARKED "PRM PLS 5060" (SET)
- NAIL AND DISK MARKED "PCP PLS 5060" (SET)
- △ NAIL AND DISK MARKED "PCP PLS 5060" (FOUND)
- ▲ NAIL AND DISK MARKED "PRM PLS 5060" (SET)
- ◆ NAIL AND DISK MARKED "PRM PLS 5060" (FOUND)
- ▲ PUBLIC UTILITIES AND DRAINAGE EASEMENT
- ## CURVE NUMBER FOR CURVE TABLE
- ## LINE NUMBER FOR LINE TABLE
- R/W RIGHT-OF-WAY
- P.B. PLAT BOOK
- PC PAGE
- RP RADIUS POINT
- POL POINT-ON-LINE
- POC POINT-ON-CURVE
- PI POINT-OF-INTERSECTION
- PT POINT-OF-TANGENCY
- PRC POINT-OF-CURVATURE
- PRC POINT-OF-REVERSE CURVATURE
- PCC POINT-OF-COMPOUND CURVATURE
- P.O.B. POINT-OF-BEGINNING
- P.O.C. POINT-OF-COMMENCEMENT
- PRM PERMANENT REFERENCE MONUMENT
- PCP PERMANENT CONTROL POINT
- (R) RADIAL
- (NR) NON-RADIAL
- ESMT. EASEMENT
- H.O.A. HOME OWNERS ASSOCIATION
- LB LICENSED BUSINESS
- PLS PROFESSIONAL LAND SURVEYOR
- PSM PROFESSIONAL SURVEYOR AND MAPPER
- R RADIUS
- D DELTA
- L LENGTH
- CD CHORD DISTANCE
- CB CHORD BEARING



PREPARED BY:
WILLIAM MOIT LAND SURVEYING INC.
 SATELLITE BEACH PROFESSIONAL CENTER
 1275 SOUTH PATRICK DRIVE, SUITE H
 SATELLITE BEACH, FLORIDA, 32937-3955
 PHONE (321) 773-4323
 PROJECT NUMBER: 2020128
 DRAWING NAME: OCEANSIDE-3A.DWG
 DRAWN BY: DANIEL D. GARNER P.S.M. 6189

NOTE:
 PRIOR TO THE RELEASE OF THE PERFORMANCE BOND,
 ALL LOT CORNER MONUMENTATION WILL BE SET AS
 1/2" IRON RODS WITH CAPS MARKED "LB 3608".

P.O.C.
 NORTHWEST CORNER OF
 CANOVA BEACH
 VACATION HOME SITES
 (PLAT BOOK 10, PAGE 13)
 4"x4"
 CONCRETE MONUMENT
 (FOUND)

