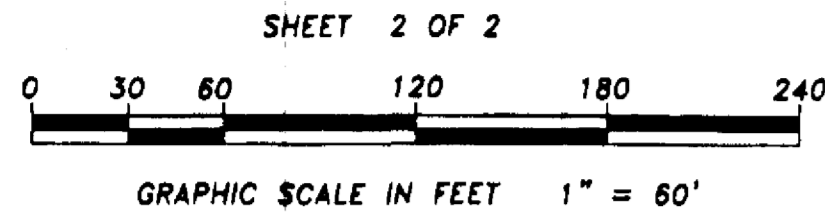
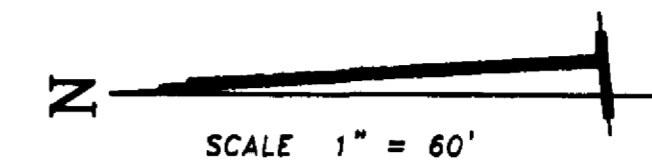


CHELSEA PARK UNIT 8

A SUBDIVISION OF A PORTION OF
SECTION 22, TOWNSHIP 25 SOUTH, RANGE 36 EAST
THE CITY OF ROCKLEDGE
BREVARD COUNTY, FLORIDA

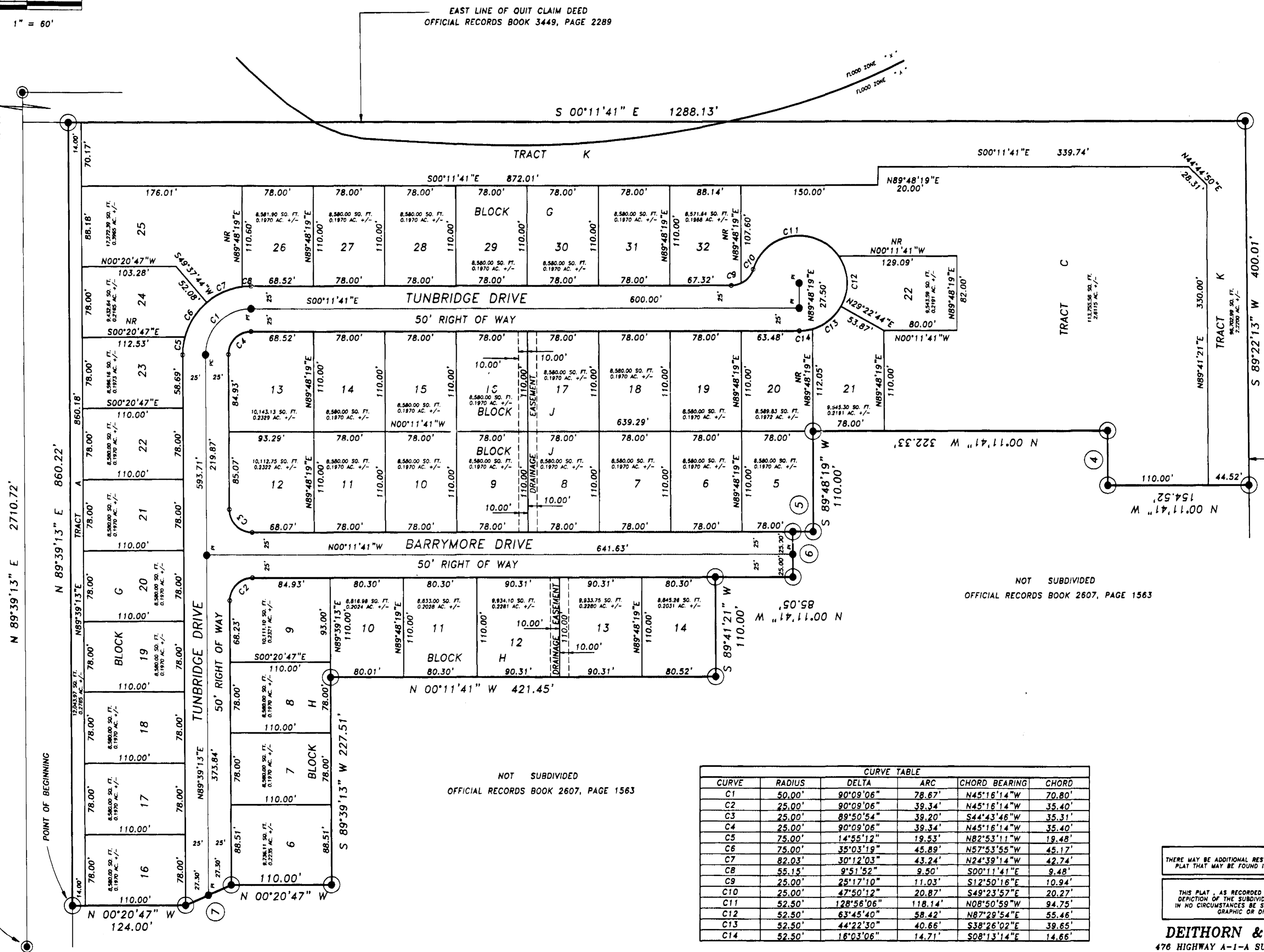
SCALE 1" = 60' AUGUST 2002

NOT SUBDIVIDED
OFFICIAL RECORDS BOOK 2991, PAGE 1077



FOUND
2" IRON PIPE
NE CORNER
SECTION 22-25-36

POINT OF COMMENCEMENT
FOUND 2" IRON PIPE
N 1/4 CORNER
SECTION 22-25-36



NOT SUBDIVIDED
OFFICIAL RECORDS BOOK 2607, PAGE 1563

CURVE	RADIUS	DELTA	ARC	CHORD BEARING	CHORD
C1	50.00'	90°09'06"	78.67'	N45°16'14"W	70.80'
C2	25.00'	90°09'06"	39.34'	N45°16'14"W	35.40'
C3	25.00'	89°50'54"	39.20'	S44°43'46"W	35.31'
C4	25.00'	90°09'06"	39.34'	N45°16'14"W	35.40'
C5	75.00'	14°55'12"	19.53'	N82°53'11"W	19.48'
C6	75.00'	35°03'19"	45.89'	N57°53'55"W	45.17'
C7	82.03'	30°12'03"	43.24'	N24°39'14"W	42.74'
C8	55.15'	9°51'52"	9.50'	S00°11'41"E	9.48'
C9	25.00'	25°17'10"	11.03'	S12°50'16"E	10.94'
C10	25.00'	47°50'12"	20.87'	S49°23'57"E	20.27'
C11	52.50'	128°56'06"	118.14'	N08°50'59"W	94.75'
C12	52.50'	63°45'40"	58.42'	N87°29'54"E	55.46'
C13	52.50'	44°22'30"	40.66'	S38°26'02"E	39.65'
C14	52.50'	18°03'06"	14.71'	S08°13'14"E	14.66'

NOT SUBDIVIDED
OFFICIAL RECORDS BOOK 2607, PAGE 1563

NORTH LINE OF THE SW 1/4 OF THE NE 1/4
OF SECTION 22-25-36
PER BOUNDARY LINE AGREEMENT
OFFICIAL RECORDS BOOK 3454, PAGE 2472

NOTICE:
THERE MAY BE ADDITIONAL RESTRICTIONS THAT ARE NOT RECORDED ON THIS
PLAT THAT MAY BE FOUND IN THE PUBLIC RECORDS OF THIS COUNTY.

NOTICE:
THIS PLAT, AS RECORDED IN ITS GRAPHIC FORM, IS THE OFFICIAL
DEPICTION OF THE SUBDIVIDED LANDS DESCRIBED HEREIN AND WILL
IN NO CIRCUMSTANCES BE SUPPLANTED IN AUTHORITY BY ANY OTHER
GRAPHIC OR DIGITAL FORM OF THE PLAT.

DEITHORN & ASSOCIATES, INC.
476 HIGHWAY A-1-A SUITE 4B SATELLITE BEACH, FL 32937
(321) 779-8661 FAX (321) 779-8673