

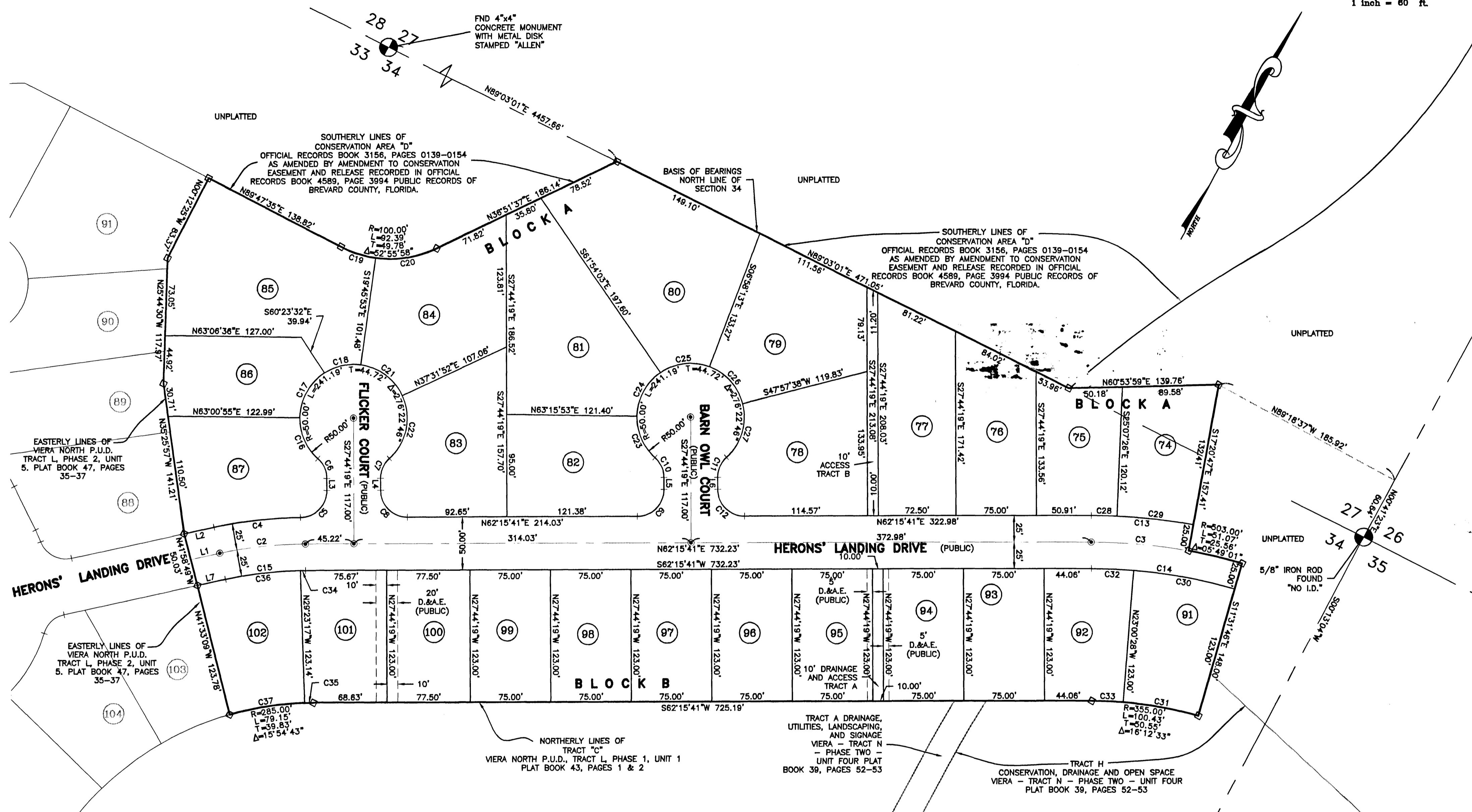
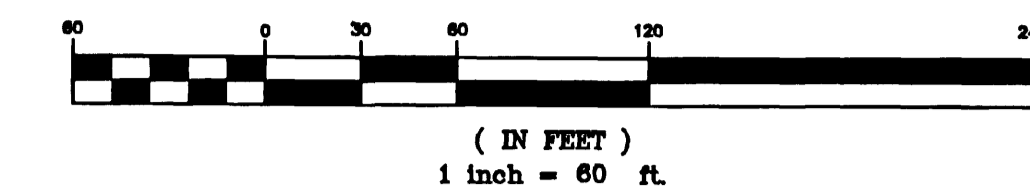
HERONS' LANDING - PHASE 2, UNIT 6

VIERA NORTH P.U.D., TRACT L

AND A REPLAT OF A PORTION OF TRACTS A AND H, OF VIERA, TRACT N, PHASE TWO, UNIT FOUR,
AS RECORDED IN PLAT BOOK 39, PAGES 52-53
SECTIONS 27 & 34 TOWNSHIP 25 SOUTH, RANGE 36 EAST
BREVARD COUNTY, FLORIDA

PLAT BOOK 48, PAGE 61
SHEET 2 OF 2
SECTIONS 27 & 34 TWP. 25 S., RANGE 36 E.

GRAPHIC SCALE

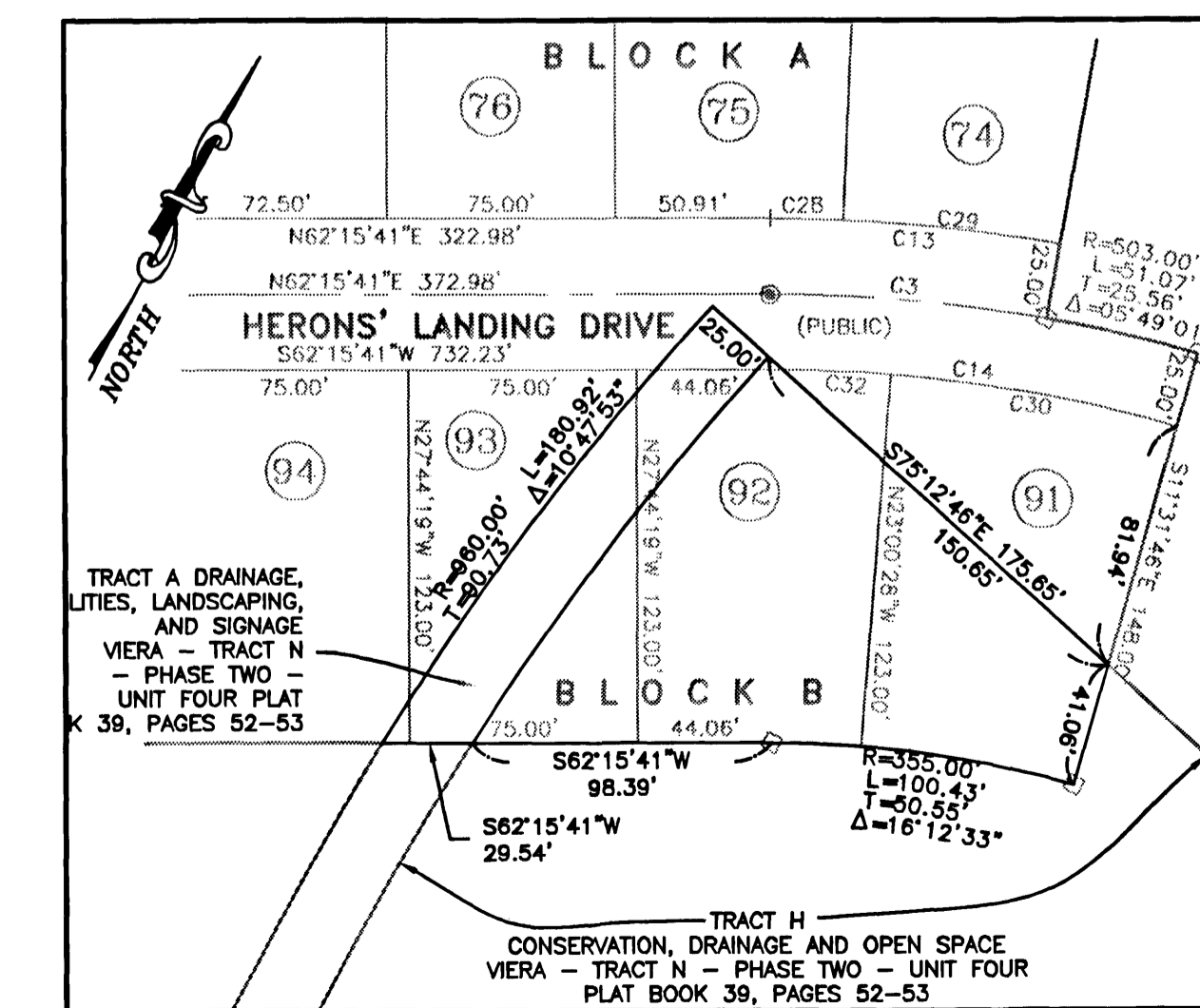


LEGEND

- PERMANENT REFERENCE MONUMENT-SET (4"x4" CONCRETE MARKER WITH METAL DISK STAMPED P.R.M.-LS3913)
- PERMANENT REFERENCE MONUMENT-FOUND (4"x4" CONCRETE MARKER WITH METAL DISK STAMPED P.R.M.-LS3913)
- PERMANENT CONTROL POINT (METAL MARKER AND METAL DISK STAMPED P.C.P.-LS3913)
- R RADIUS OF CURVE
- L ARC LENGTH OF CURVE
- T TANGENT
- Δ CENTRAL ANGLE OF CURVE (DELTA)
- Ch CHORD LENGTH OF CURVE
- ChB CHORD BEARING OF CURVE
- RB RADIAL BEARING
- (NR) NON RADIAL LINE
- P.O.B. POINT OF BEGINNING
- P.O.C. POINT OF COMMENCEMENT
- PC POINT OF CURVATURE
- PRC POINT OF REVERSE CURVATURE
- PI POINT OF INTERSECTION
- PT POINT OF TANGENCY
- CA CURVE TABLE LABEL
- L LINE TABLE LABEL
- FND FOUND
- (TYP) TYPICAL
- R/W RIGHT OF WAY
- US&AE UTILITY, SIDEWALK & UTILITY EASEMENT
- DE DRAINAGE EASEMENT
- UE UTILITY EASEMENT
- ESMT EASEMENT
- D.&A.E. DRAINAGE AND ACCESS EASEMENT
- ORB OFFICIAL RECORD BOOK
- PB PLAT BOOK
- PGS PAGES
- CL CENTERLINE

LINE TABLE		
LINE	LENGTH	BEARING
L1	27.60	N49°58'09"E
L2	28.45	N49°58'09"E
L3	11.12	N27°44'19"W
L4	11.10	S27°44'19"E
L5	11.10	N27°44'19"W
L6	11.10	S27°44'19"E
L7	26.75	S49°58'09"W

CURVE TABLE					
CURVE	RADIUS	CENTRAL ANGLE	LENGTH	CHORD LENGTH	CHORD BEARING
C2	375.00'	12°17'32"	80.45'	80.30'	S56°06'55"W
C3	503.00'	10°23'31"	91.23'	91.11'	S67°27'27"W
C4	400.00'	11°38'50"	81.31'	81.17'	S55°47'34"W
C5	25.00'	89°21'18"	38.99'	35.16'	N16°56'20"E
C6	25.00'	48°11'23"	21.03'	20.41'	N51°50'00"W
C7	25.00'	48°11'23"	21.03'	20.41'	S03°38'38"E
C8	25.00'	90°00'00"	39.27'	35.36'	S72°44'19"E
C9	25.00'	90°00'00"	39.27'	35.36'	N17°15'41"E
C10	25.00'	48°11'23"	21.03'	20.41'	N51°50'00"W
C11	25.00'	48°11'23"	21.03'	20.41'	S03°38'38"E
C12	25.00'	90°00'00"	39.27'	35.36'	S72°44'19"E
C13	528.00'	10°23'31"	95.77'	95.64'	S67°27'27"W
C14	478.00'	16°12'33"	135.23'	134.78'	S70°21'58"W
C15	350.00'	12°17'32"	75.09'	74.95'	S56°06'55"W
C16	50.00'	48°56'37"	42.71'	41.42'	S51°27'23"E
C17	50.00'	56°35'33"	49.39'	47.40'	S01°18'42"W
C18	50.00'	40°37'39"	35.45'	34.72'	S49°55'18"W
C19	100.00'	19°33'28"	34.13'	33.97'	N80°00'51"E
C20	100.00'	33°22'30"	58.25'	57.43'	N53°32'52"E
C21	50.00'	57°17'45"	50.00'	47.94'	N81°07'01"W
C22	50.00'	72°55'12"	63.63'	59.43'	N16°00'32"W
C23	50.00'	49°11'35"	42.93'	41.62'	S51°19'54"E
C24	50.00'	54°50'04"	47.85'	46.05'	S00°40'55"W
C25	50.00'	54°55'50"	47.94'	46.12'	S55°33'52"W
C26	50.00'	54°55'50"	47.94'	46.12'	N69°30'18"W
C27	50.00'	62°28'26"	54.53'	51.87'	N10°47'39"W
C28	528.00'	02°36'53"	24.10'	24.09'	S63°34'08"W
C29	528.00'	07°46'39"	71.67'	71.62'	S68°45'53"W
C30	478.00'	11°28'42"	95.76'	95.60'	S72°43'53"W
C31	355.00'	11°28'42"	71.12'	71.00'	S72°43'53"W
C32	478.00'	04°43'51"	39.47'	39.46'	S64°37'36"W
C33	355.00'	04°43'51"	29.31'	29.30'	S64°37'36"W
C34	350.00'	00°48'16"	4.71'	4.71'	S81°52'33"W
C35	285.00'	01°38'58"	8.20'	8.20'	S81°26'12"W
C36	350.00'	11°31'16"	70.36'	70.26'	S55°43'47"W
C37	285.00'	14°15'45"	70.94'	70.76'	S53°28'51"W



DETAIL OF A PORTION OF TRACT A AND TRACT H
REPLATED HEREUNDER
SCALE: 1" = 60'

NOTICE: THIS PLAT, AS RECORDED IN ITS GRAPHIC FORM, IS THE OFFICIAL DEPICTION OF THE SUBDIVIDED LANDS DESCRIBED HEREIN AND WILL IN NO CIRCUMSTANCES BE SUPPLANTED IN AUTHORITY BY ANY OTHER GRAPHIC OR DIGITAL FORM OF THE PLAT. THERE MAY BE ADDITIONAL RESTRICTIONS THAT ARE NOT RECORDED ON THIS PLAT THAT MAY BE FOUND IN THE PUBLIC RECORDS OF THIS COUNTY.

THIS PLAT PREPARED BY

B.S.E. CONSULTANTS, INC.
CONSULTING, ENGINEERING, LAND SURVEYING
312 S. Harbor City Blvd., Suite 4, Melbourne, Florida (321) 725-3674