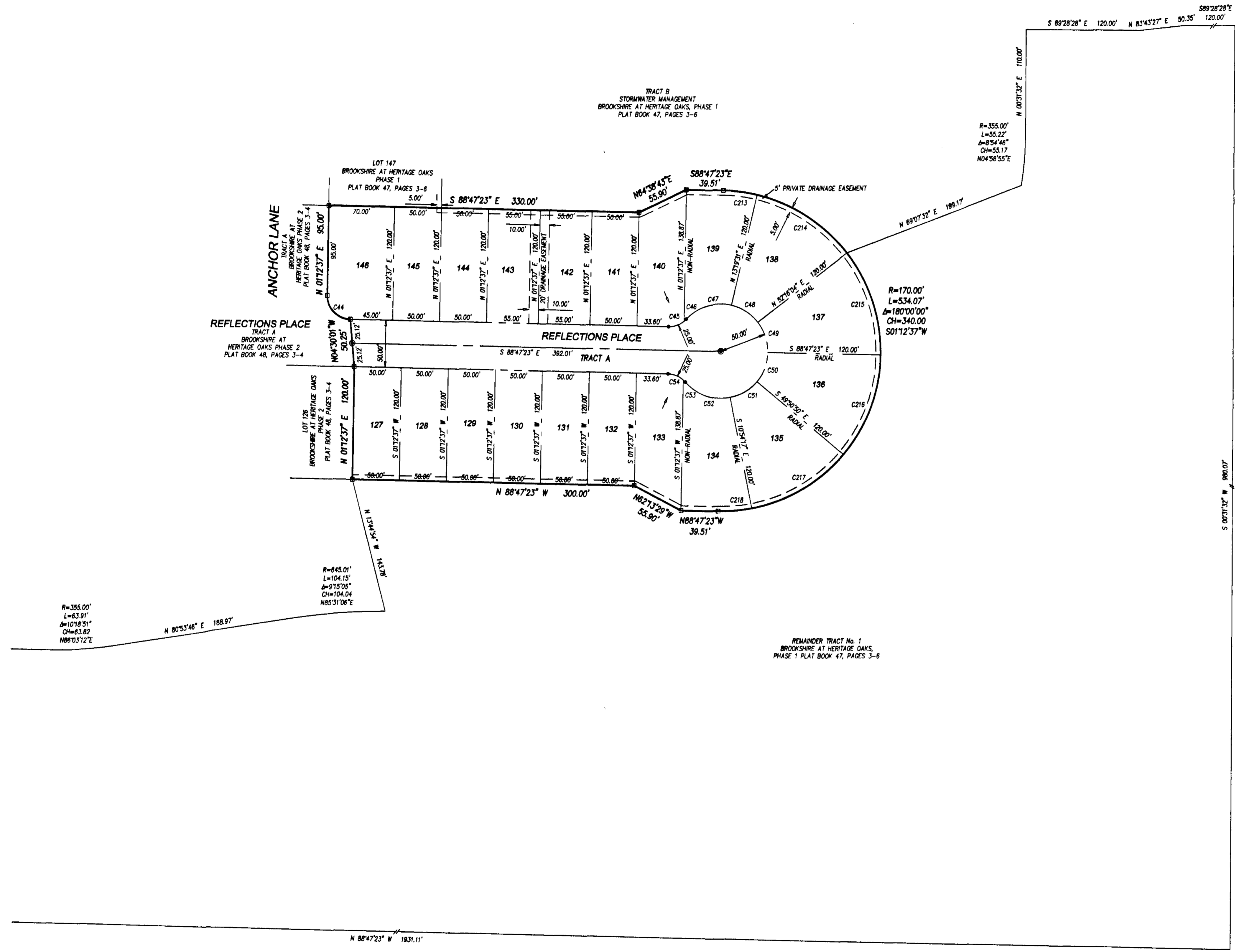
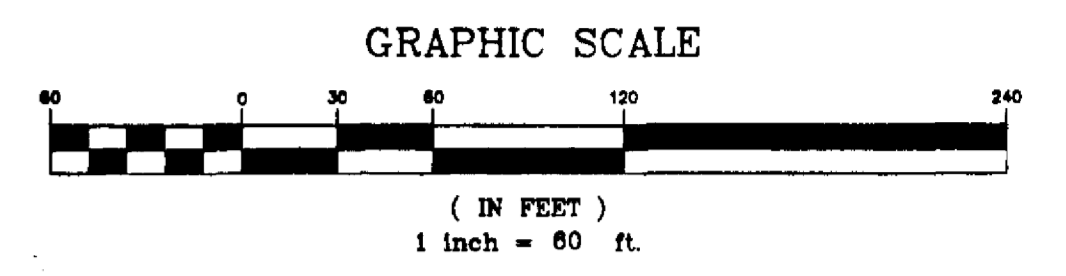


# BROOKSHIRE AT HERITAGE OAKS PHASE 3

A SUBDIVISION LYING IN SECTION 7, TOWNSHIP 28 SOUTH, RANGE 37 EAST  
BEING A REPLAT OF A PORTION OF TRACT NO. 1, BROOKSHIRE AT HERITAGE OAKS, PHASE 1  
PLAT BOOK 47, PAGES 3 THROUGH 6  
IN THE CITY OF WEST MELBOURNE, BREVARD COUNTY, FLORIDA

NORTH



CURVE TABLE					
CURVE	RADIUS	DELTA	ARC	CHORD	BEARING
C44	25.00'	90°00'00"	39.27'	35.36'	S43°47'23"E
C45	25.00'	40°58'55"	17.88'	17.50'	N70°43'10"E
C46	25.00'	71°2'28"	3.14'	3.14'	N46°37'28"E
C47	50.00'	60°18'17"	52.63'	50.23'	S73°02'23"W
C48	50.00'	38°56'33"	33.98'	33.33'	N57°12'12"W
C49	50.00'	38°56'33"	33.98'	33.33'	N18°15'39"W
C50	50.00'	38°56'33"	33.98'	33.33'	N20°40'53"E
C51	50.00'	38°56'33"	33.98'	33.33'	N59°37'28"E
C52	50.00'	60°18'17"	52.63'	50.23'	S70°45'09"E
C53	25.00'	71°2'28"	3.14'	3.14'	N44°12'14"W
C54	25.00'	40°58'55"	17.88'	17.50'	N68°17'36"W
C213	170.00'	12°06'54"	35.95'	35.88'	N82°43'58"W
C214	170.00'	38°56'33"	115.54'	113.33'	N92°12'12"W
C215	170.00'	38°56'33"	115.54'	113.33'	N18°15'39"W
C216	170.00'	38°56'33"	115.54'	113.33'	N20°40'53"E
C217	170.00'	38°56'33"	115.54'	113.33'	N59°37'28"E
C218	170.00'	12°06'54"	35.95'	35.88'	N85°09'10"E

- LEGEND**
- = FOUND P.R.M. (PERMANENT REFERENCE MONUMENT)
  - = 4"x4" CONCRETE MONUMENT STAMPED PERM PLS 5363
  - = SET P.R.M. (PERMANENT REFERENCE MONUMENT)
  - = 4"x4" CONCRETE MONUMENT STAMPED PERM PLS 5363
  - = P.C.P. (PERMANENT CONTROL POINT)
  - = NAIL & DISK STAMPED PERM PLS 5363
  - ORB = OFFICIAL RECORDS BOOK
  - = DENOTES CHANGE IN DIRECTION
  - (FOR CLARITY PURPOSES ONLY)

PREPARED BY  
**GORDON & ASSOCIATES  
SURVEYORS & MAPPERS, INC.**  
219 FORREST AVENUE  
COCOA, FLORIDA 32922  
(321)839-8171

"NOTICE: This plat, as recorded in its graphic form, is the official depiction of the subdivided lands described herein and will in no circumstances be supplemented in authority by any other graphic or digital form of the plat. There may be additional restrictions that are not recorded on this plat that may be found in the public records of this county."