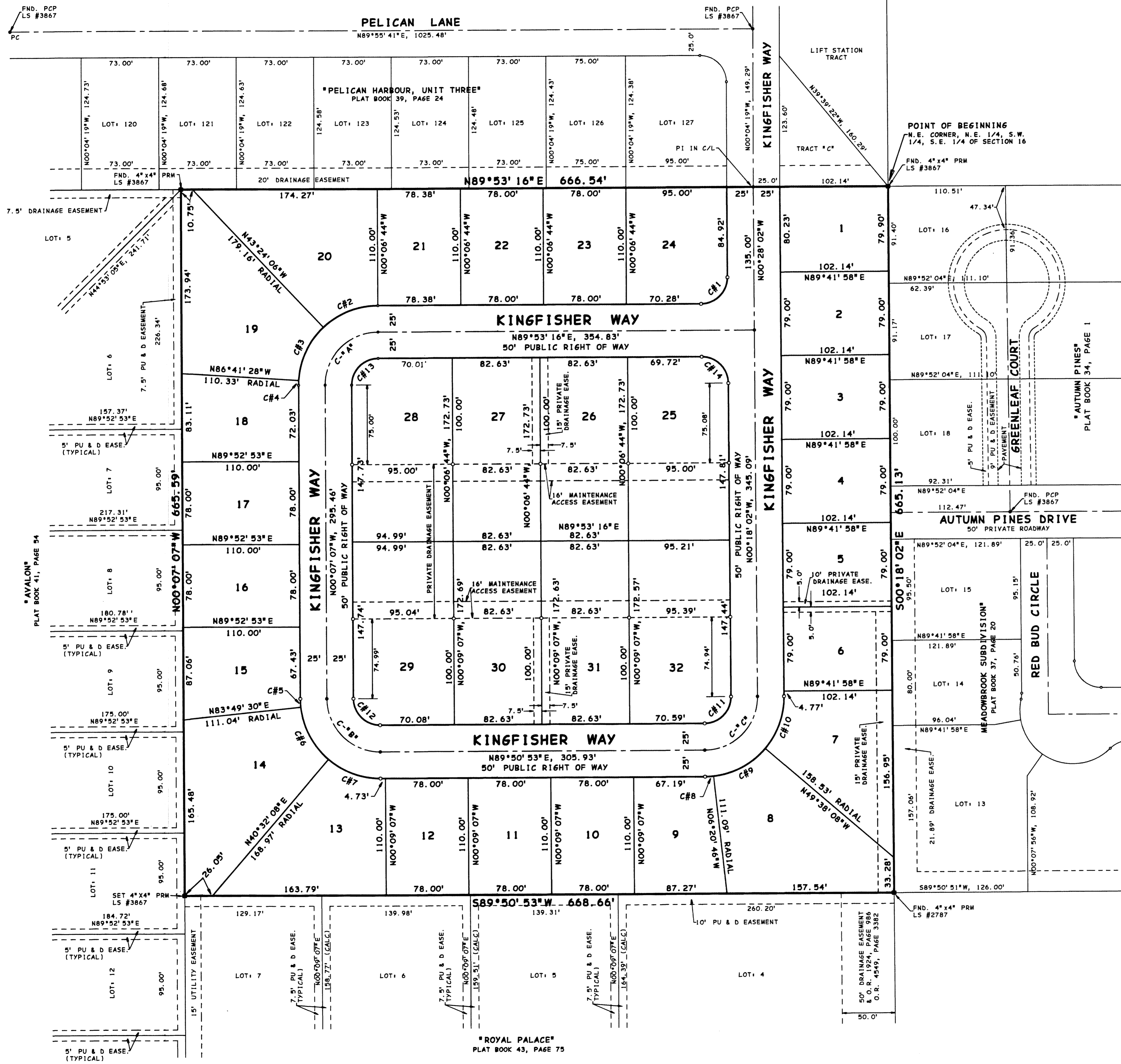


PELICAN HARBOUR, UNIT FOUR

A SUBDIVISION LYING IN SECTION 16, TOWNSHIP 25 SOUTH, RANGE 36 EAST, CITY OF ROCKLEDGE, BREVARD COUNTY, FLORIDA.

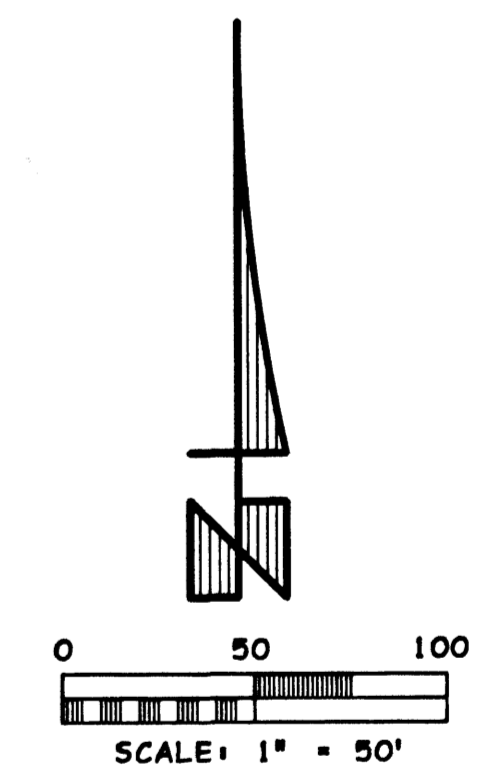


LOT CURVE DATA:

CURVE	RADIUS	DELTA	ARC	TAN	BEARING	CHORD
C #1	25.00'	90°11'18"	39.35'	25.08'	N44°47'37"E	35.41'
C #2	75.00'	43°17'22"	56.67'	29.76'	N68°14'35"E	55.33'
C #3	75.00'	43°17'22"	56.67'	29.76'	N24°57'13"E	55.33'
C #4	75.00'	03°25'39"	4.49'	2.24'	N01°35'42"E	4.49'
C #5	75.00'	06°03'23"	7.93'	3.97'	N03°08'48"W	7.92'
C #6	75.00'	43°17'22"	56.67'	29.76'	N27°49'11"W	55.33'
C #7	75.00'	40°41'15"	53.26'	27.81'	N69°48'30"W	52.15'
C #8	75.00'	06°11'38"	8.11'	4.06'	N86°45'04"E	8.10'
C #9	75.00'	43°17'22"	56.67'	29.76'	N62°00'33"E	55.33'
C #10	75.00'	40°39'54"	53.23'	27.79'	N20°01'55"E	52.12'
C #11	25.00'	90°08'54"	39.33'	25.06'	N44°46'25"E	35.40'
C #12	25.00'	90°02'00"	39.28'	25.01'	N45°08'07"W	35.37'
C #13	25.00'	90°00'23"	39.27'	25.00'	N44°53'05"E	35.36'
C #14	25.00'	89°48'42"	39.19'	24.92'	N45°12'23"W	35.30'

CENTERLINE CURVE DATA:

CURVE	RADIUS	DELTA	ARC	TAN	BEARING	CHORD
C-A	50.00'	90°00'23"	78.55'	50.01'	N44°53'05"E	70.72'
C-B	50.00'	90°02'00"	70.73'	50.03'	N45°08'07"W	70.73'
C-C	50.00'	90°08'54"	78.67'	50.13'	N44°46'25"E	70.80'



MONUMENTATION NOTE:
 ALL MONUMENTATION WITH RESPECT TO LOTS, TRACTS AND RIGHTS OF WAY SHALL BE 5/8" IRON RODS WITH PLASTIC CAP STAMPED "PACKARD / LS #3867".
 IN ACCORDANCE WITH PERFORMANCE BOND REQUIREMENTS WITH THE CITY OF ROCKLEDGE, ALL LOT / TRACT MONUMENTATION WILL BE SET PRIOR TO RELEASE OF SAID BOND.

