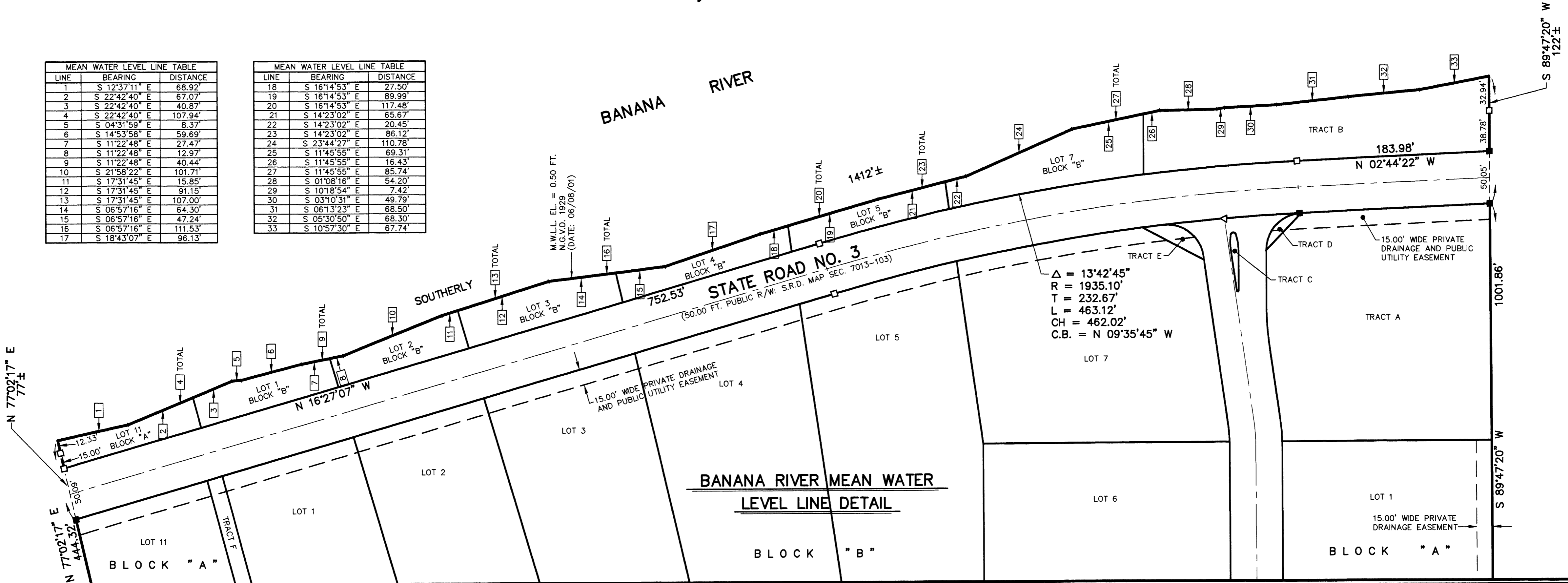


Honeymoon Hill

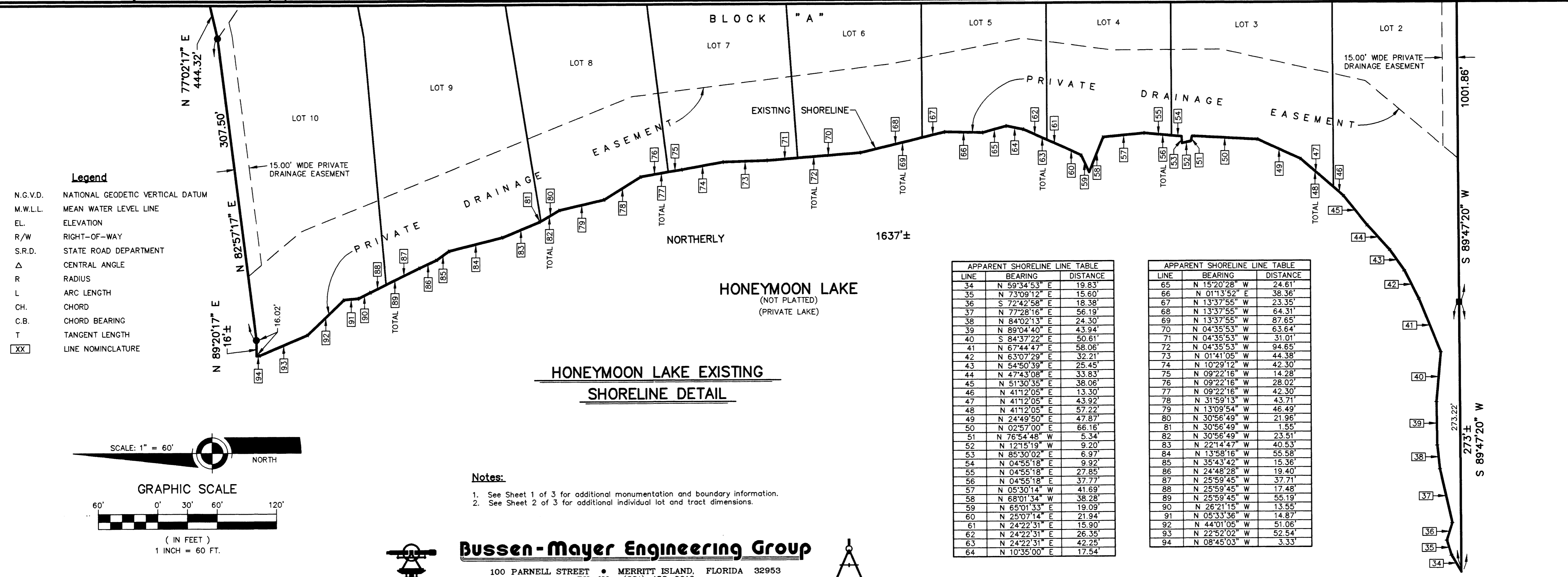
A SUBDIVISION LYING IN SECTION 31, TOWNSHIP 25 SOUTH, RANGE 37 EAST OF BREVARD COUNTY, FLORIDA.

LINE	BEARING	DISTANCE
1	S 12°37'11" E	68.92'
2	S 22°42'40" E	67.07'
3	S 22°42'40" E	40.87'
4	S 22°42'40" E	107.94'
5	S 04°31'59" E	8.37'
6	S 14°53'58" E	59.69'
7	S 11°22'48" E	27.47'
8	S 11°22'48" E	12.97'
9	S 11°22'48" E	40.44'
10	S 21°58'22" E	101.71'
11	S 17°31'45" E	15.85'
12	S 17°31'45" E	91.15'
13	S 17°31'45" E	107.00'
14	S 08°57'16" E	64.30'
15	S 08°57'16" E	47.24'
16	S 08°57'16" E	111.53'
17	S 18°43'07" E	96.13'

LINE	BEARING	DISTANCE
18	S 16°14'53" E	27.50'
19	S 16°14'53" E	89.99'
20	S 16°14'53" E	117.48'
21	S 14°23'02" E	65.67'
22	S 14°23'02" E	20.45'
23	S 14°23'02" E	86.12'
24	S 23°44'27" E	110.78'
25	S 11°45'55" E	69.31'
26	S 11°45'55" E	16.43'
27	S 11°45'55" E	85.74'
28	S 01°08'16" E	54.20'
29	S 10°18'54" E	7.42'
30	S 03°10'31" E	49.79'
31	S 06°13'23" E	68.50'
32	S 05°30'50" E	68.30'
33	S 10°57'30" E	67.74'



BANANA RIVER MEAN WATER LEVEL LINE DETAIL

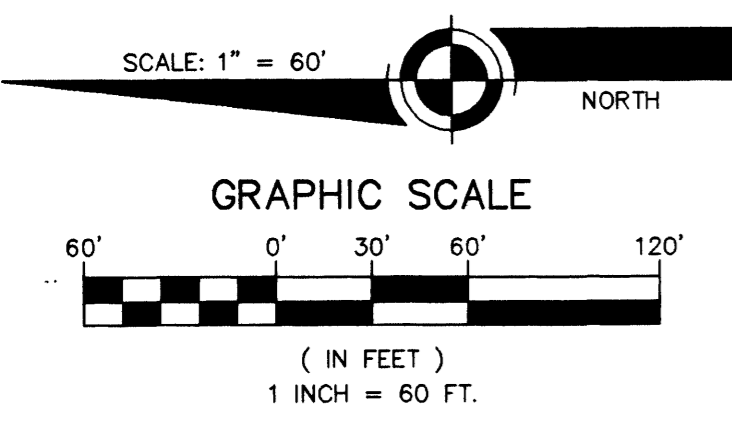


HONEYMOON LAKE EXISTING SHORELINE DETAIL

LINE	BEARING	DISTANCE
34	N 59°34'53" E	19.83'
35	N 73°09'12" E	15.60'
36	S 72°42'58" E	18.38'
37	N 77°28'16" E	56.19'
38	N 84°02'13" E	24.30'
39	N 89°04'40" E	43.94'
40	S 84°37'22" E	50.61'
41	N 67°44'47" E	58.06'
42	N 63°07'29" E	32.21'
43	N 54°50'39" E	25.45'
44	N 47°43'08" E	33.83'
45	N 51°30'35" E	38.08'
46	N 41°12'05" E	13.30'
47	N 41°12'05" E	43.92'
48	N 41°12'05" E	57.22'
49	N 24°49'50" E	47.87'
50	N 02°57'00" E	66.16'
51	N 76°54'48" W	5.34'
52	N 12°15'19" W	9.20'
53	N 85°30'02" E	6.97'
54	N 04°55'18" E	9.92'
55	N 04°55'18" E	27.85'
56	N 04°55'18" E	37.77'
57	N 05°30'14" W	41.69'
58	N 68°01'34" W	38.28'
59	N 65°01'33" E	19.08'
60	N 25°07'14" E	21.94'
61	N 24°22'31" E	15.90'
62	N 24°22'31" E	26.35'
63	N 24°22'31" E	42.25'
64	N 10°35'00" E	17.54'

LINE	BEARING	DISTANCE
65	N 15°20'28" W	24.61'
66	N 01°13'52" E	38.36'
67	N 13°37'55" W	23.35'
68	N 13°37'55" W	64.31'
69	N 13°37'55" W	87.65'
70	N 04°35'53" W	63.64'
71	N 04°35'53" W	31.01'
72	N 04°35'53" W	94.65'
73	N 01°41'05" W	44.38'
74	N 10°29'12" W	42.30'
75	N 09°22'16" W	14.28'
76	N 09°22'16" W	28.02'
77	N 09°22'16" W	42.30'
78	N 31°59'13" W	43.71'
79	N 13°09'54" W	46.49'
80	N 30°56'49" W	21.96'
81	N 30°56'49" W	1.55'
82	N 30°56'49" W	23.51'
83	N 22°14'47" W	40.53'
84	N 13°58'16" W	55.58'
85	N 35°43'42" W	15.36'
86	N 24°48'28" W	19.40'
87	N 25°59'45" W	37.71'
88	N 25°59'45" W	17.48'
89	N 25°59'45" W	55.19'
90	N 26°21'15" W	13.55'
91	N 05°33'36" W	14.87'
92	N 44°01'05" W	51.06'
93	N 22°52'02" W	52.54'
94	N 08°45'03" W	3.33'

- Legend**
- N.G.V.D. NATIONAL GEODETIC VERTICAL DATUM
 - M.W.L.L. MEAN WATER LEVEL LINE
 - EL. ELEVATION
 - R/W RIGHT-OF-WAY
 - S.R.D. STATE ROAD DEPARTMENT
 - Δ CENTRAL ANGLE
 - R RADIUS
 - L ARC LENGTH
 - CH CHORD
 - C.B. CHORD BEARING
 - T TANGENT LENGTH
 - XX LINE NOMINCLATURE



- Notes:**
- See Sheet 1 of 3 for additional monumentation and boundary information.
 - See Sheet 2 of 3 for additional individual lot and tract dimensions.

Bussen-Mayer Engineering Group
 100 PARNELL STREET • MERRITT ISLAND, FLORIDA 32953
 PH. NO.: (321) 453-0010