

GRAND ISLE PHASES 2 VIERA NORTH P.U.D., PARCEL U,X

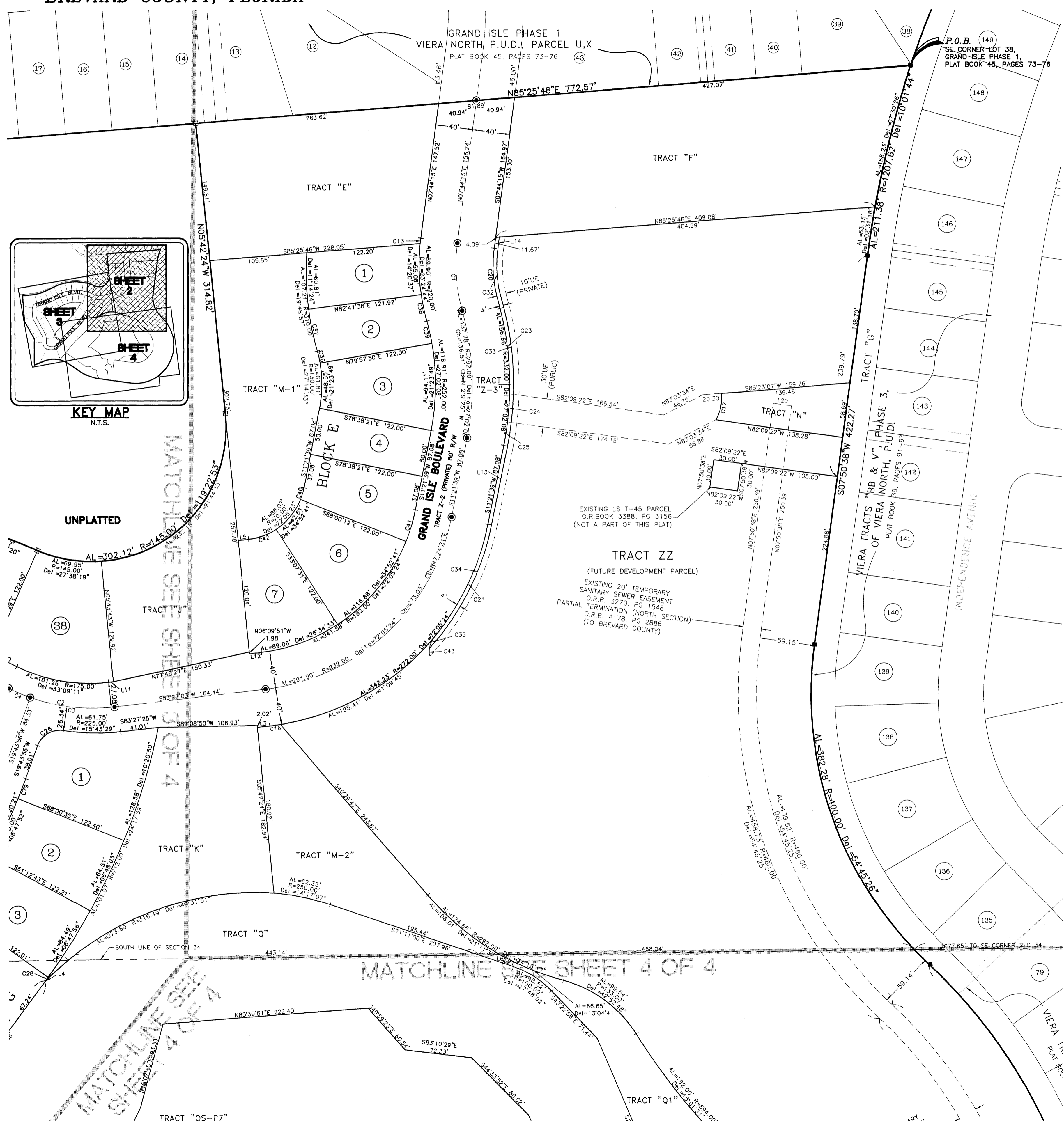
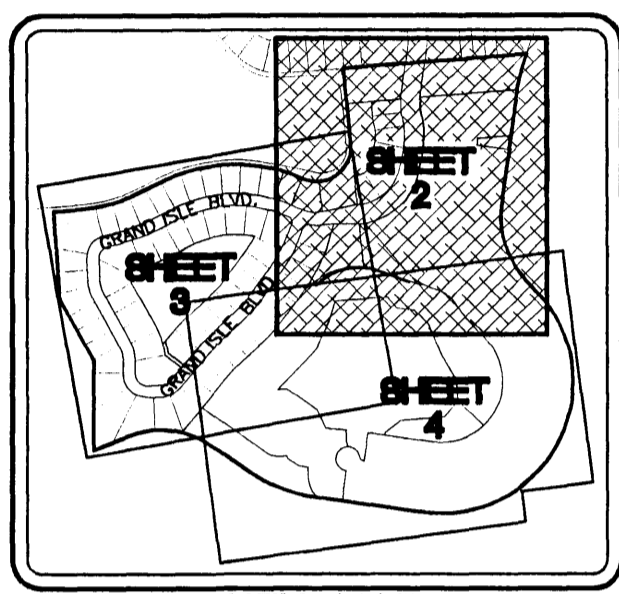
SECTION 34, TOWNSHIP 25 SOUTH, RANGE 36 EAST & SECTION 3, TOWNSHIP 26 SOUTH, RANGE 36 EAST

BREVARD COUNTY, FLORIDA

PLAT BOOK 48 PAGE 24
SHEET 2 OF 4
SECTION 34, TWP. 25S, RANGE 36E &
SECTION 3, TWP. 26S, RANGE 36E

LINE	BEARING	LENGTH
L3	S83°27'03"W	13.53'
L4	N36°04'17"E	1.65'
L5	N83°27'03"E	11.20'
L6	N28°18'36"E	6.67'
L8	N07°36'55"E	10.49'
L9	N15°49'30"W	10.92'
L10	S83°17'58"W	36.59'
L11	N83°27'03"E	5.11'
L12	N83°27'03"E	12.98'
L13	S11°21'39"W	87.08'
L14	N07°44'15"E	12.54'
L15	N28°48'00"W	15.97'
L16	N28°48'00"W	5.77'
L17	S28°48'00"E	5.00'
L19	S10°54'53"W	16.90'
L20	N82°09'22"W	20.00'
L21	N71°11'00"W	12.53'

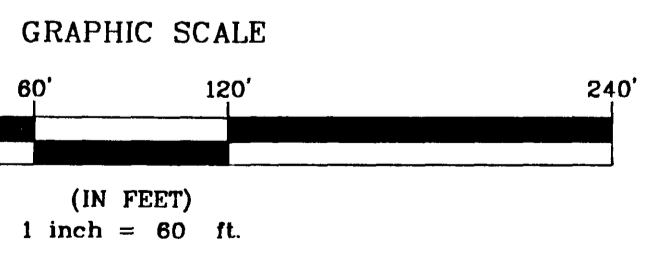
CURVE	LENGTH	RADIUS	CENTRAL ANGLE	CHORD	BEARING
C1	73.55'	180.00'	23°24'44"	73.04'	S03°58'07"E
C2	116.77'	200.00'	33°27'04"	115.12'	S79°49'25"E
C3	91.74'	200.00'	26°16'53"	90.94'	S83°24'30"E
C4	25.03'	200.00'	07°10'11"	25.01'	S66°40'58"E
C5	107.65'	75.00'	82°14'25"	98.65'	S37°14'57"W
C6	65.26'	150.00'	24°55'44"	64.75'	S16°20'08"E
C7	75.21'	150.00'	28°43'41"	74.42'	N14°26'09"W
C8	121.30'	75.00'	92°39'50"	108.50'	S46°24'14"E
C9	63.27'	75.00'	48°19'54"	61.41'	N63°05'54"E
C10	55.63'	422.00'	07°33'08"	55.59'	S42°42'31"W
C11	67.61'	372.00'	10°24'48"	67.52'	N41°16'41"E
C13	5.77'	220.00'	01°30'11"	5.77'	S06°59'09"W
C16	11.76'	272.00'	02°28'37"	11.76'	N82°12'45"E
C17	29.08'	50.00'	33°19'39"	28.68'	N12°02'57"E
C18	36.25'	275.00'	07°33'08"	36.22'	S42°42'31"W
C19	30.77'	25.00'	70°31'44"	28.87'	S47°07'13"E
C20	57.21'	140.00'	23°24'44"	56.81'	S03°58'07"E
C21	135.06'	272.00'	28°27'03"	133.68'	N25°35'11"E
C23	101.48'	332.00'	17°30'47"	101.08'	N06°55'05"W
C24	30.06'	332.00'	05°11'18"	30.05'	N04°25'57"E
C25	25.11'	332.00'	04°20'03"	25.11'	N09°11'38"E
C26	34.67'	25.00'	79°26'58"	31.95'	S59°27'25"W
C27	52.33'	397.00'	07°33'08"	52.29'	S42°42'31"W
C28	4.39'	712.00'	00°21'11"	4.39'	N35°53'42"E
C29	37.08'	25.00'	84°59'01"	33.77'	N22°45'34"W
C30	42.18'	50.00'	48°19'54"	40.94'	N63°05'54"E
C31	54.39'	125.00'	24°55'44"	53.96'	S16°20'08"E
C32	55.57'	136.00'	23°24'44"	55.19'	S03°58'07"E
C33	158.54'	336.00'	27°02'08"	157.08'	N02°09'25"W
C34	150.13'	276.00'	31°09'56"	148.28'	N26°56'37"E
C35	13.76'	25.00'	31°31'38"	13.58'	S24°02'53"W
C36	13.26'	130.00'	05°50'45"	13.26'	N12°57'32"W
C37	46.40'	310.00'	08°34'32"	46.36'	S11°35'38"E
C38	29.05'	220.00'	07°33'55"	29.03'	S11°53'31"E
C39	24.80'	252.00'	05°38'19"	24.79'	N12°51'19"W
C40	12.99'	70.00'	10°38'09"	12.98'	N16°40'44"E
C41	35.64'	192.00'	10°38'10"	35.59'	N16°40'44"E
C42	32.47'	70.00'	26°34'33"	32.18'	N70°09'46"E
C43	8.57'	25.00'	19°38'54"	8.53'	S01°32'23"E
C79	23.25'	590.00'	02°15'29"	23.25'	N20°51'41"E
C81	5.00'	590.00'	00°29'08"	5.00'	N35°49'43"E
C82	36.08'	397.00'	05°12'24"	36.06'	N38°40'29"E
C83	36.08'	397.00'	05°12'24"	36.06'	N43°52'54"E
C84	30.05'	100.00'	17°13'02"	29.94'	N78°39'20"E
C85	21.49'	175.00'	07°02'11"	21.48'	S07°23'22"E
C86	26.04'	100.00'	14°55'05"	25.96'	S03°35'16"W
C87	12.28'	100.00'	07°02'03"	12.27'	S74°51'07"W
C88	20.55'	700.00'	01°40'56"	20.55'	S63°16'13"W
C89	16.97'	578.00'	01°40'56"	16.97'	S63°16'13"W
C90	29.61'	578.00'	02°56'07"	29.61'	N64°51'27"W
C91	12.73'	569.00'	01°16'54"	12.73'	S39°34'24"W
C92	10.00'	447.00'	01°16'54"	10.00'	S39°34'24"W
C93	11.00'	175.00'	03°36'05"	11.00'	N26°59'57"W
C94	18.67'	297.00'	03°36'05"	18.67'	N26°59'57"W
C95	20.74'	406.00'	02°55'35"	20.73'	S63°53'32"W
C96	26.97'	528.00'	02°55'35"	26.97'	S63°53'32"W



MATCHLINE SEE SHEET 3 OF 4

MATCHLINE SEE SHEET 4 OF 4

MATCHLINE SEE SHEET 4 OF 4



THIS PLAT PREPARED BY
B.S.E. CONSULTANTS, INC.
CONSULTING, ENGINEERING, LAND SURVEYING
312 S. Harbor City Blvd., Suite 4, Melbourne, Florida 321 725-3674