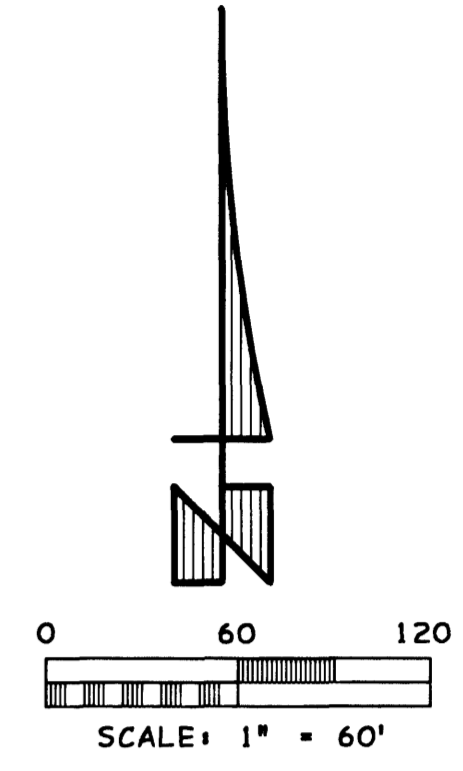
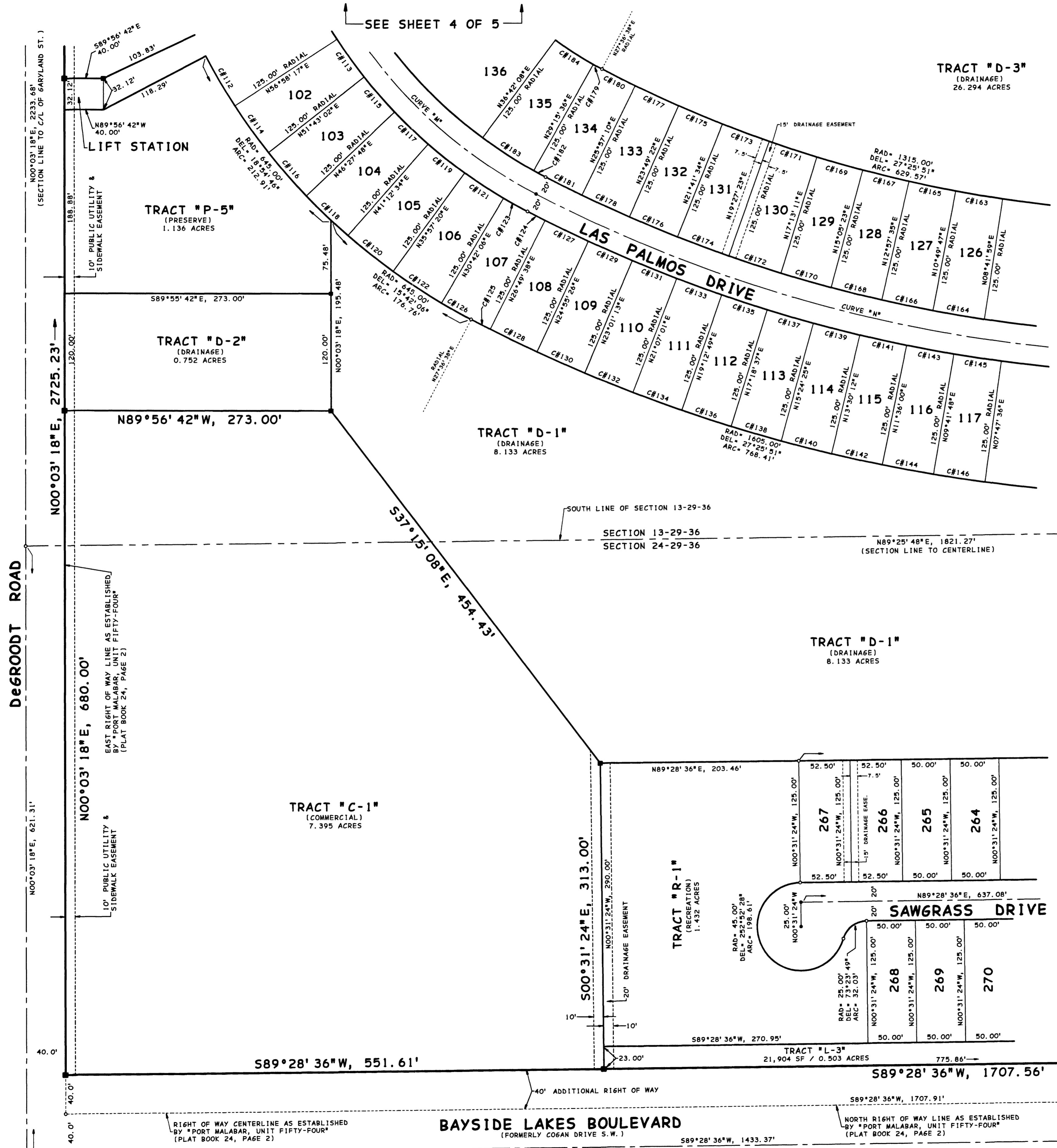




# BRIDGEWATER AT BAYSIDE LAKES



A SUBDIVISION LYING IN SECTIONS 13 & 24, TOWNSHIP 29 SOUTH, RANGE 36 EAST, CITY OF PALM BAY, BREVARD COUNTY, FLORIDA  
BEING A PARTIAL "REPLAT" OF "PORT MALABAR, UNIT FIFTY-FOUR" RECORDED IN PLAT BOOK 24, PAGE 2.



LOT CURVE DATA						
CURVE	RADIUS	DELTA	ARC	TAN	BEARING	CHD
C#112	645.00'	05°15'14"	59.15'	29.59'	N30°24'06"W	59.12'
C#113	520.00'	05°15'14"	47.68'	23.86'	N35°39'20"W	47.67'
C#114	645.00'	05°15'14"	59.15'	29.59'	N35°39'20"W	59.12'
C#115	520.00'	05°15'14"	47.68'	23.86'	N40°54'35"W	47.67'
C#116	645.00'	05°15'14"	59.15'	29.59'	N40°54'35"W	59.12'
C#117	520.00'	05°15'14"	47.68'	23.86'	N46°09'49"W	47.67'
C#118	645.00'	05°15'14"	59.15'	29.59'	N46°09'49"W	59.12'
C#119	520.00'	05°15'14"	47.68'	23.86'	N51°25'03"W	47.67'
C#120	645.00'	05°15'14"	59.15'	29.59'	N51°25'03"W	59.12'
C#121	520.00'	05°15'14"	47.68'	23.86'	N56°40'17"W	47.67'
C#122	645.00'	05°15'14"	59.15'	29.59'	N56°40'17"W	59.12'
C#123	520.00'	03°05'28"	28.05'	14.03'	N60°50'38"W	28.05'
C#124	1480.00'	00°47'00"	20.24'	10.12'	N62°46'53"W	20.24'
C#125	1605.00'	00°47'00"	21.95'	10.97'	N66°46'53"W	21.94'
C#126	645.00'	03°02'28"	34.80'	17.40'	N60°50'38"W	34.79'
C#127	1480.00'	01°54'12"	49.17'	24.59'	N64°07'28"W	49.16'
C#128	1605.00'	01°54'12"	53.32'	26.66'	N64°07'28"W	53.32'
C#129	1480.00'	01°54'12"	49.17'	24.59'	N66°01'40"W	49.16'
C#130	1605.00'	01°54'12"	53.32'	26.66'	N66°01'40"W	53.32'
C#131	1480.00'	01°54'12"	49.17'	24.59'	N67°55'53"W	49.16'
C#132	1605.00'	01°54'12"	53.32'	26.66'	N67°55'53"W	53.32'
C#133	1480.00'	01°54'12"	49.17'	24.59'	N69°50'05"W	49.16'
C#134	1605.00'	01°54'12"	53.32'	26.66'	N69°50'05"W	53.32'
C#135	1480.00'	01°54'12"	49.17'	24.59'	N71°44'17"W	49.16'
C#136	1605.00'	01°54'12"	53.32'	26.66'	N71°44'17"W	53.32'
C#137	1480.00'	01°54'12"	49.17'	24.59'	N73°38'29"W	49.16'
C#138	1605.00'	01°54'12"	53.32'	26.66'	N73°38'29"W	53.32'
C#139	1480.00'	01°54'12"	49.17'	24.59'	N75°32'42"W	49.16'
C#140	1605.00'	01°54'12"	53.32'	26.66'	N75°32'42"W	53.32'
C#141	1480.00'	01°54'12"	49.17'	24.59'	N77°26'54"W	49.16'
C#142	1605.00'	01°54'12"	53.32'	26.66'	N77°26'54"W	53.32'
C#143	1480.00'	01°54'12"	49.17'	24.59'	N79°21'06"W	49.16'
C#144	1605.00'	01°54'12"	53.32'	26.66'	N79°21'06"W	53.32'
C#145	1480.00'	01°54'12"	49.17'	24.59'	N81°15'18"W	49.16'
C#146	1605.00'	01°54'12"	53.32'	26.66'	N81°15'18"W	53.32'
C#163	1315.00'	02°07'48"	48.89'	24.45'	N80°14'07"W	48.88'
C#164	1440.00'	02°07'48"	53.53'	26.77'	N80°14'07"W	53.53'
C#165	1315.00'	02°07'48"	48.89'	24.45'	N78°06'19"W	48.88'
C#166	1440.00'	02°07'48"	53.53'	26.77'	N78°06'19"W	53.53'
C#167	1315.00'	02°07'48"	48.89'	24.45'	N75°58'31"W	48.88'
C#168	1440.00'	02°07'48"	53.53'	26.77'	N75°58'31"W	53.53'
C#169	1315.00'	02°07'48"	48.89'	24.45'	N73°50'43"W	48.88'
C#170	1440.00'	02°07'48"	53.53'	26.77'	N73°50'43"W	53.53'
C#171	1315.00'	02°14'11"	51.33'	25.67'	N71°39'43"W	51.33'
C#172	1440.00'	02°14'11"	56.21'	28.11'	N71°39'43"W	56.21'
C#173	1315.00'	02°14'11"	51.33'	25.67'	N69°25'32"W	51.33'
C#174	1440.00'	02°14'11"	56.21'	28.11'	N69°25'32"W	56.21'
C#175	1315.00'	02°07'48"	48.89'	24.45'	N67°14'32"W	48.88'
C#176	1440.00'	02°07'48"	53.53'	26.77'	N67°14'32"W	53.53'
C#177	1315.00'	02°07'48"	48.89'	24.45'	N65°06'44"W	48.88'
C#178	1440.00'	02°07'48"	53.53'	26.77'	N65°06'44"W	53.53'
C#180	1315.00'	01°39'28"	38.05'	19.03'	N63°13'06"W	38.05'
C#181	1440.00'	01°39'28"	41.67'	20.83'	N63°13'06"W	41.66'
C#183	480.00'	07°26'32"	62.35'	31.22'	N57°01'08"W	62.30'
C#184	355.00'	07°26'32"	46.11'	23.09'	N57°01'08"W	46.08'

CENTERLINE CURVE DATA						
CURVE	RADIUS	DELTA	ARC	TAN	BEARING	CHD
C# *M	500.00'	62°26'40"	544.93'	303.08'	N31°10'02"W	518.36'
C# *N	1460.00'	27°25'51"	698.99'	356.33'	N76°06'18"W	692.33'

