



BRIDGEWATER AT BAYSIDE LAKES

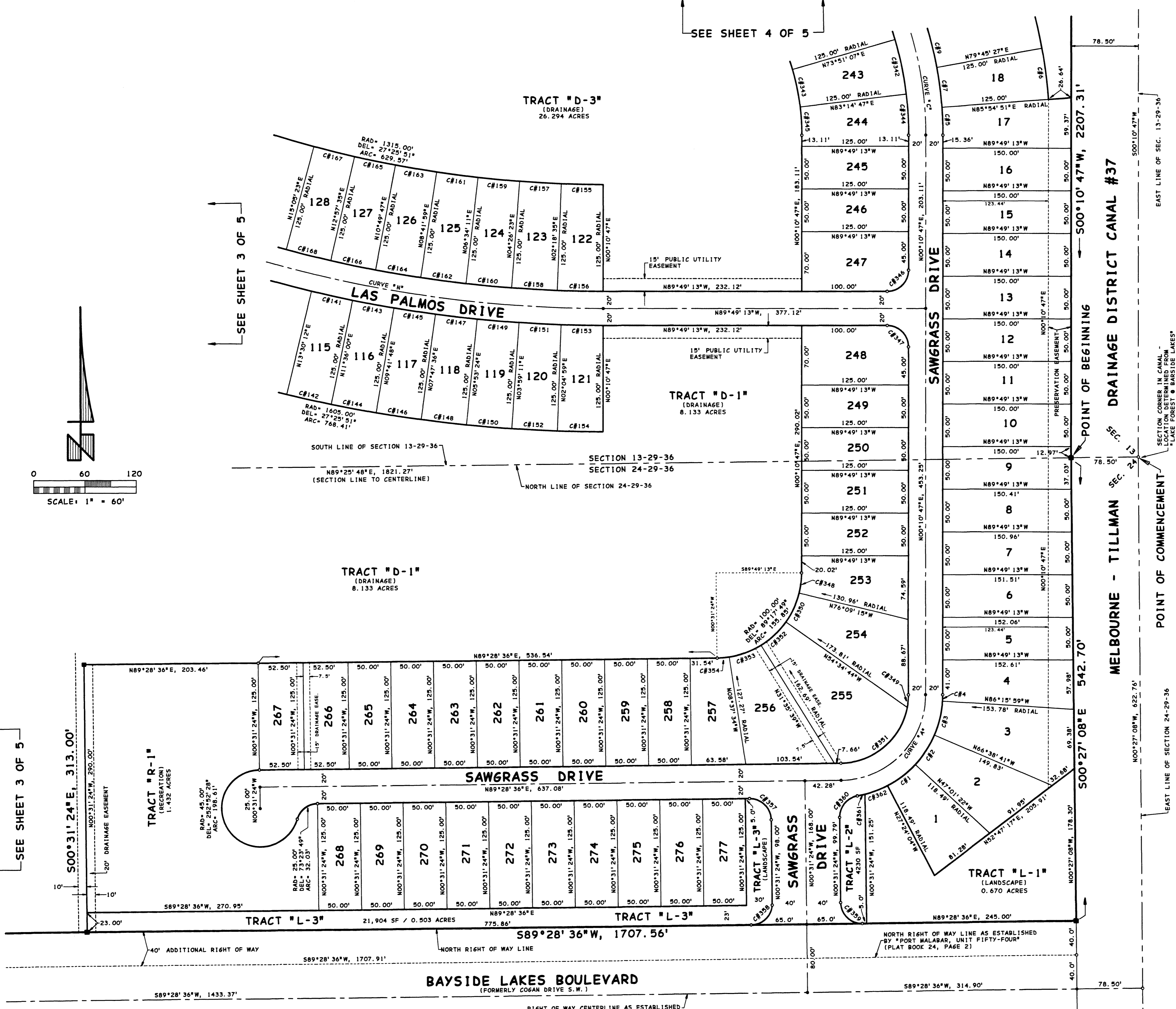
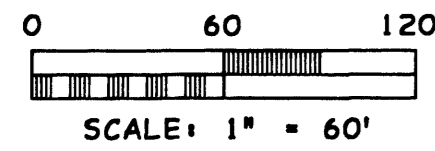
A SUBDIVISION LYING IN SECTIONS 13 & 24, TOWNSHIP 29 SOUTH, RANGE 36 EAST, CITY OF PALM BAY, BREVARD COUNTY, FLORIDA
BEING A PARTIAL "REPLAT" OF "PORT MALABAR, UNIT FIFTY-FOUR" RECORDED IN PLAT BOOK 24, PAGE 2.



SEE SHEET 4 OF 5

SEE SHEET 3 OF 5

SEE SHEET 3 OF 5



LOT CURVE DATA						
CURVE	RADIUS	DELTA	ARC	TAN	BEARING	CHD
C# 1	120.00'	19°37'18"	41.10'	20.75'	N52°47'17"E	40.90'
C# 2	120.00'	19°37'18"	41.10'	20.75'	N33°09'58"E	40.90'
C# 3	120.00'	19°37'18"	41.10'	20.75'	N13°32'40"E	40.90'
C# 4	120.00'	03°33'14"	7.44'	3.72'	N01°55'24"E	7.44'
C# 5	440.00'	04°15'59"	32.76'	16.39'	N01°57'11"W	32.75'
C# 6	565.00'	06°09'24"	60.71'	30.39'	N07°09'51"W	60.68'
C# 7	440.00'	06°09'24"	47.28'	23.66'	N07°09'51"W	47.26'
C#11	1480.00'	01°54'12"	49.17'	24.59'	N77°26'54"W	49.16'
C#12	1605.00'	01°54'12"	53.32'	26.66'	N77°26'54"W	53.32'
C#13	1480.00'	01°54'12"	49.17'	24.59'	N79°21'06"W	49.16'
C#14	1480.00'	01°54'12"	53.32'	26.66'	N79°21'06"W	53.32'
C#15	1480.00'	01°54'12"	49.17'	24.59'	N81°15'18"W	49.16'
C#16	1605.00'	01°54'12"	53.32'	26.66'	N81°15'18"W	53.32'
C#17	1480.00'	01°54'12"	49.17'	24.59'	N83°09'30"W	49.16'
C#18	1605.00'	01°54'12"	53.32'	26.66'	N83°09'30"W	53.32'
C#19	1480.00'	01°54'12"	49.17'	24.59'	N85°03'43"W	49.16'
C#20	1605.00'	01°54'12"	53.32'	26.66'	N85°03'43"W	53.32'
C#21	1480.00'	01°54'12"	49.17'	24.59'	N86°57'55"W	49.16'
C#22	1605.00'	01°54'12"	53.32'	26.66'	N86°57'55"W	53.32'
C#23	1480.00'	01°54'12"	49.17'	24.59'	N88°52'07"W	49.16'
C#24	1605.00'	01°54'12"	53.32'	26.66'	N88°52'07"W	53.32'
C#25	1315.00'	02°07'48"	48.89'	24.45'	N84°29'43"W	48.88'
C#26	1440.00'	02°07'48"	48.89'	24.45'	N88°45'19"W	48.88'
C#27	1315.00'	02°07'48"	48.89'	24.45'	N86°37'31"W	48.88'
C#28	1440.00'	02°07'48"	48.89'	24.45'	N86°37'31"W	53.53'
C#29	1315.00'	02°07'48"	48.89'	24.45'	N84°29'43"W	48.88'
C#30	1440.00'	02°07'48"	48.89'	24.45'	N84°29'43"W	53.53'
C#31	1315.00'	02°07'48"	48.89'	24.45'	N82°21'55"W	48.88'
C#32	1440.00'	02°07'48"	48.89'	24.45'	N82°21'55"W	53.53'
C#33	1315.00'	02°07'48"	48.89'	24.45'	N80°14'07"W	48.88'
C#34	1440.00'	02°07'48"	48.89'	24.45'	N80°14'07"W	48.88'
C#35	1315.00'	02°07'48"	48.89'	24.45'	N78°06'19"W	48.88'
C#36	1440.00'	02°07'48"	48.89'	24.45'	N78°06'19"W	53.53'
C#37	1315.00'	02°07'48"	48.89'	24.45'	N75°58'31"W	48.88'
C#38	1440.00'	02°07'48"	48.89'	24.45'	N75°58'31"W	53.53'
C#39	400.00'	09°23'40"	65.59'	32.87'	N11°27'03"W	65.51'
C#40	275.00'	09°23'40"	45.09'	22.60'	N11°27'03"W	45.04'
C#41	400.00'	06°56'00"	48.40'	24.23'	N03°17'13"W	48.37'
C#42	275.00'	06°56'00"	33.28'	16.66'	N03°17'13"W	33.26'
C#43	25.00'	90°00'00"	39.27'	25.00'	N45°10'47"E	35.36'
C#44	25.00'	90°00'00"	39.27'	25.00'	N44°49'13"W	35.36'
C#45	100.00'	13°39'58"	23.85'	11.98'	N07°00'46"E	23.80'
C#46	80.00'	10°37'59"	14.85'	7.44'	N05°29'46"E	14.83'
C#47	105.00'	21°34'31"	37.66'	19.05'	N24°38'00"E	37.43'
C#48	80.00'	78°39'50"	109.84'	65.55'	N50°08'41"E	101.41'
C#49	100.00'	22°59'05"	40.12'	20.33'	N46°54'49"E	39.85'
C#50	100.00'	22°59'05"	40.09'	20.32'	N69°53'24"E	39.82'
C#51	100.00'	08°06'09"	14.14'	7.08'	N85°25'31"E	14.13'
C#52	25.00'	90°00'00"	39.27'	25.00'	N45°31'24"E	35.36'
C#53	25.00'	90°00'00"	39.27'	25.00'	N44°28'36"E	35.36'
C#54	25.00'	90°00'00"	39.27'	25.00'	N45°31'24"E	35.36'
C#55	25.00'	80°59'10"	35.34'	21.35'	N39°58'11"E	32.47'
C#56	120.00'	04°20'27"	9.09'	4.55'	N78°17'32"E	9.09'
C#57	120.00'	13°31'23"	28.32'	14.23'	N69°21'37"E	28.26'

CENTERLINE CURVE DATA						
CURVE	RADIUS	DELTA	ARC	TAN	BEARING	CHD
C# 1A	100.00'	89°17'49"	155.85'	98.78'	N44°49'41"E	140.55'
C# 1B	420.00'	52°25'14"	384.26'	206.76'	N26°01'50"W	371.00'
C# 1C	1460.00'	27°25'51"	698.99'	356.33'	N76°06'18"W	692.33'

r.m. packard
surveying & mapping, Inc.
1007 Rockledge Drive
Rockledge, FL 32955
Tel.: (321) 832-8335