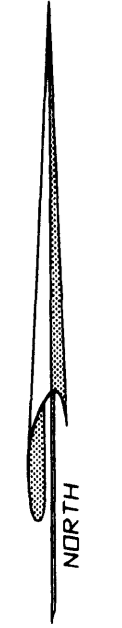
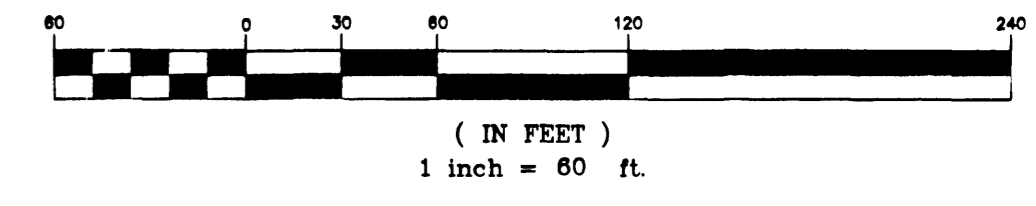


BROOKSHIRE AT HERITAGE OAKS PHASE 2

A SUBDIVISION LYING IN SECTION 7, TOWNSHIP 28 SOUTH, RANGE 37 EAST
BEING A REPLAT OF TRACT NO. 1, BROOKSHIRE AT HERITAGE
OAKS PHASE 1, PLAT BOOK 47, PAGE 3 THROUGH 6
IN THE CITY OF WEST MELBOURNE, BREVARD COUNTY, FLORIDA

GRAPHIC SCALE



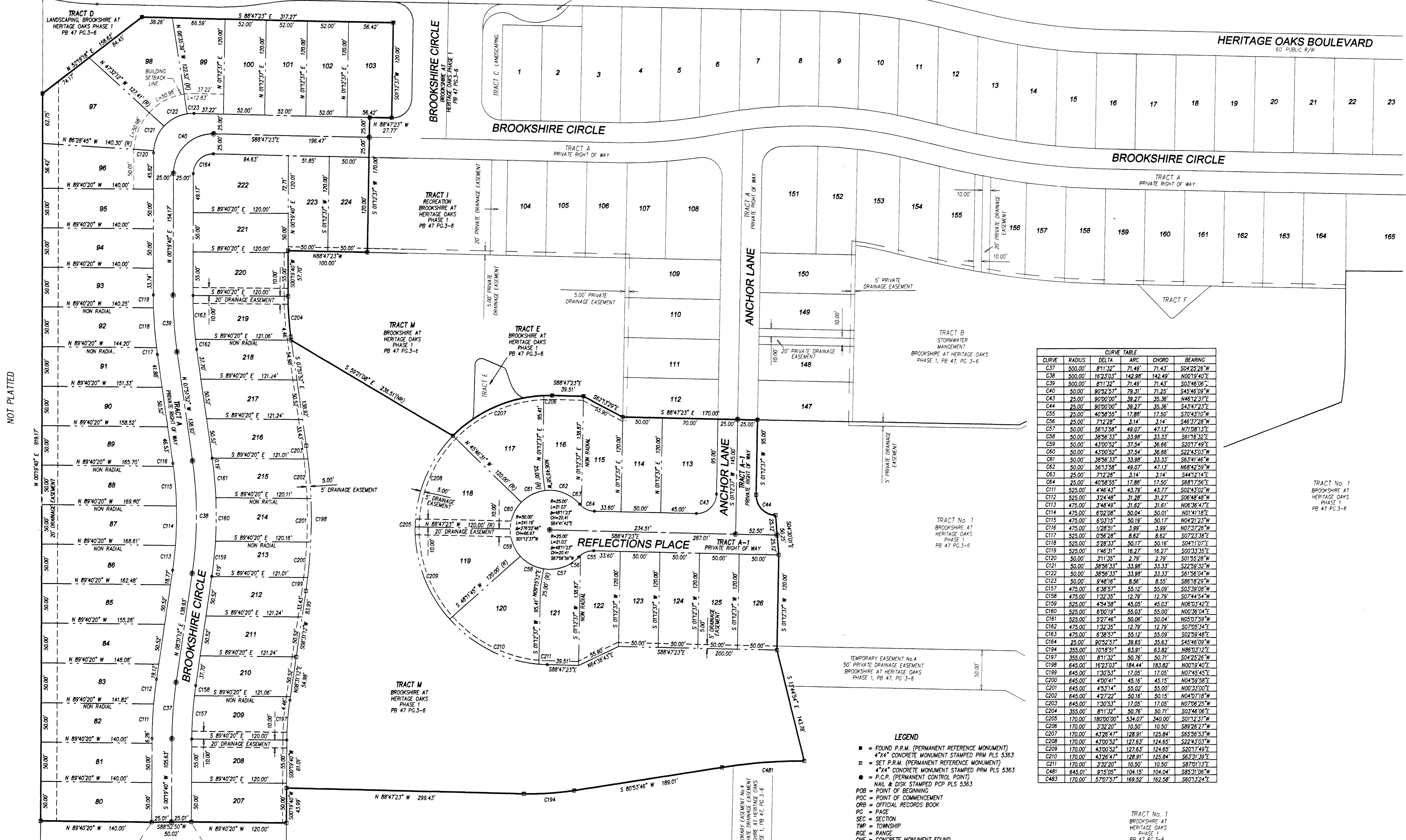
HERITAGE OAK BOULEVARD
60' PUBLIC R/W
BROOKSHIRE AT
HERITAGE OAKS PHASE 1
PB 47 PG.3-6

HERITAGE OAKS BOULEVARD
60' PUBLIC R/W

BROOKSHIRE CIRCLE
BROOKSHIRE AT
HERITAGE OAKS PHASE 1
PB 47 PG.3-6

BROOKSHIRE CIRCLE

BROOKSHIRE CIRCLE



| CURVE TABLE | | | | | |
|-------------|---------|----------|---------|---------|-------------|
| CURVE | RADIUS | DELTA | ARC | CHORD | BEARING |
| C37 | 500.00' | 811.32" | 71.49' | 71.43' | S04°25'26"W |
| C38 | 500.00' | 1623.03" | 142.98' | 142.49' | N00°19'40"E |
| C39 | 500.00' | 811.32" | 71.49' | 71.43' | S03°46'06"W |
| C40 | 50.00' | 9032.57" | 79.31' | 71.25' | S45°46'09"W |
| C43 | 25.00' | 9000.00" | 39.27' | 35.36' | N46°12'37"E |
| C44 | 25.00' | 9000.00" | 39.27' | 35.36' | S43°47'23"E |
| C55 | 25.00' | 4038.55" | 17.88' | 17.50' | S70°43'10"W |
| C56 | 25.00' | 712.28" | 3.14' | 3.14' | S46°37'28"W |
| C57 | 50.00' | 5613.58" | 49.07' | 47.13' | N71°08'13"E |
| C58 | 50.00' | 3856.33" | 33.98' | 33.33' | S61°16'32"E |
| C59 | 50.00' | 4300.52" | 37.54' | 36.66' | S20°17'49"E |
| C60 | 50.00' | 4300.52" | 37.54' | 36.66' | S22°43'03"W |
| C61 | 50.00' | 3856.33" | 33.98' | 33.33' | S63°41'46"W |
| C62 | 50.00' | 5613.58" | 49.07' | 47.13' | N68°42'59"W |
| C63 | 25.00' | 712.28" | 3.14' | 3.14' | S44°21'42"E |
| C64 | 25.00' | 4038.55" | 17.88' | 17.50' | S68°17'56"E |
| C111 | 525.00' | 446.43" | 43.79' | 43.77' | S02°43'02"W |
| C112 | 525.00' | 324.48" | 31.28' | 31.27' | S06°48'48"W |
| C113 | 475.00' | 348.49" | 31.62' | 31.61' | N06°36'47"E |
| C114 | 475.00' | 602.08" | 50.04' | 50.01' | N01°41'18"E |
| C115 | 475.00' | 603.15" | 50.19' | 50.17' | N04°21'23"W |
| C116 | 475.00' | 428.51" | 3.99' | 3.99' | N07°32'26"W |
| C117 | 525.00' | 036.28" | 8.62' | 8.62' | S07°23'38"E |
| C118 | 525.00' | 528.33" | 50.17' | 50.16' | S04°11'07"E |
| C119 | 525.00' | 146.31" | 16.27' | 16.27' | S00°33'35"E |
| C120 | 50.00' | 311.35" | 2.79' | 2.79' | S01°55'28"W |
| C121 | 50.00' | 3856.33" | 33.98' | 33.33' | S22°59'32"W |
| C122 | 50.00' | 3856.33" | 33.98' | 33.33' | S61°16'32"W |
| C123 | 50.00' | 948.16" | 8.56' | 8.55' | S69°18'29"W |
| C157 | 475.00' | 638.97" | 55.12' | 55.09' | S03°19'08"W |
| C158 | 475.00' | 132.35" | 12.79' | 12.79' | S07°44'54"W |
| C159 | 525.00' | 454.58" | 45.05' | 45.01' | N06°03'42"E |
| C160 | 525.00' | 600.19" | 55.03' | 55.00' | N00°36'04"E |
| C161 | 525.00' | 527.46" | 50.06' | 50.04' | N05°07'59"W |
| C162 | 475.00' | 132.35" | 12.79' | 12.79' | S07°05'34"E |
| C163 | 475.00' | 638.97" | 55.12' | 55.09' | S02°59'48"E |
| C164 | 25.00' | 9032.57" | 39.65' | 35.63' | S45°46'09"W |
| C194 | 355.00' | 1078.51" | 63.91' | 63.82' | N86°03'12"E |
| C197 | 355.00' | 811.32" | 50.76' | 50.71' | S04°25'26"W |
| C198 | 645.00' | 1623.03" | 184.44' | 183.82' | N00°19'40"E |
| C199 | 645.00' | 130.53" | 17.05' | 17.05' | N07°45'45"E |
| C200 | 645.00' | 400.41" | 45.15' | 45.15' | N04°59'58"E |
| C201 | 645.00' | 493.14" | 55.02' | 55.00' | N00°33'00"E |
| C202 | 645.00' | 427.22" | 50.16' | 50.15' | N04°07'16"W |
| C203 | 645.00' | 130.53" | 17.05' | 17.05' | N07°46'25"W |
| C204 | 355.00' | 811.32" | 50.76' | 50.71' | S03°46'06"W |
| C205 | 170.00' | 1800.00" | 534.07' | 340.00' | S01°12'37"W |
| C206 | 170.00' | 332.20" | 10.50' | 10.50' | S89°26'27"W |
| C207 | 170.00' | 4326.47" | 128.91' | 125.84' | S65°56'53"W |
| C208 | 170.00' | 4300.52" | 127.63' | 124.65' | S22°43'03"W |
| C209 | 170.00' | 4300.52" | 127.63' | 124.65' | S20°17'49"E |
| C210 | 170.00' | 4326.47" | 128.91' | 125.84' | S63°31'39"E |
| C211 | 170.00' | 332.20" | 10.50' | 10.50' | S87°01'13"E |
| C481 | 645.01' | 915.06" | 104.15' | 104.04' | S85°31'06"W |
| C483 | 170.00' | 5707.57" | 169.52' | 162.58' | S60°13'24"E |

- LEGEND**
- = FOUND P.R.M. (PERMANENT REFERENCE MONUMENT)
4"x4" CONCRETE MONUMENT STAMPED PRM PLS 5363
 - = SET P.R.M. (PERMANENT REFERENCE MONUMENT)
4"x4" CONCRETE MONUMENT STAMPED PRM PLS 5363
 - = P.C.P. (PERMANENT CONTROL POINT)
 - = MAIL & DISK STAMPED POP PLS 5363
 - POB = POINT OF BEGINNING
 - POC = POINT OF COMMENCEMENT
 - ORB = OFFICIAL RECORDS BOOK
 - PG = PAGE
 - SEC = SECTION
 - TWP = TOWNSHIP
 - ROE = RANGE
 - CMF = CONCRETE MONUMENT FOUND
 - COR = CORNER
 - IPF = IRON PIPE FOUND
 - PB = PLAT BOOK
 - PG = PAGE
 - = DENOTES CHANGE IN DIRECTION
(FOR CLARITY PURPOSES ONLY)

PREPARED BY
GORDON & ASSOCIATES
SURVEYORS & MAPPERS, INC.
219 FORREST AVENUE
COCOA, FLORIDA 32922
(321)639-8171

NOTICE: This plat, as recorded in its graphic form, is the official depiction of the subdivided lands described herein and will in no circumstances be supplanted in authority by any other graphic or digital form of the plat. There may be additional restrictions that are not recorded on this plat that may be found in the public records of this county.

NOT PLATTED

50' PUBLIC ACQUIRED WATER

TRACT No. 1
BROOKSHIRE AT
HERITAGE OAKS
PHASE 1
PB 47 PG.3-6

TRACT No. 1
BROOKSHIRE AT
HERITAGE OAKS
PHASE 1
PB 47 PG.3-6

TRACT No. 1
BROOKSHIRE AT
HERITAGE OAKS
PHASE 1
PB 47 PG.3-6

TRACT No. 1
BROOKSHIRE AT
HERITAGE OAKS
PHASE 1
PB 47 PG.3-6