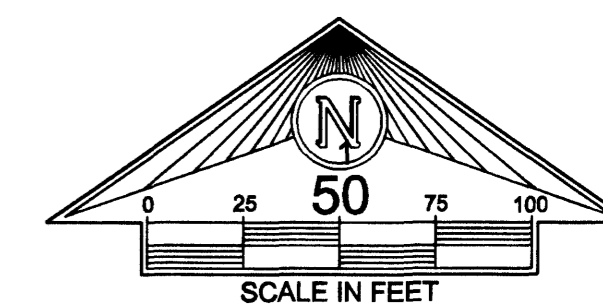


HICKORY GREEN - UNIT TWO

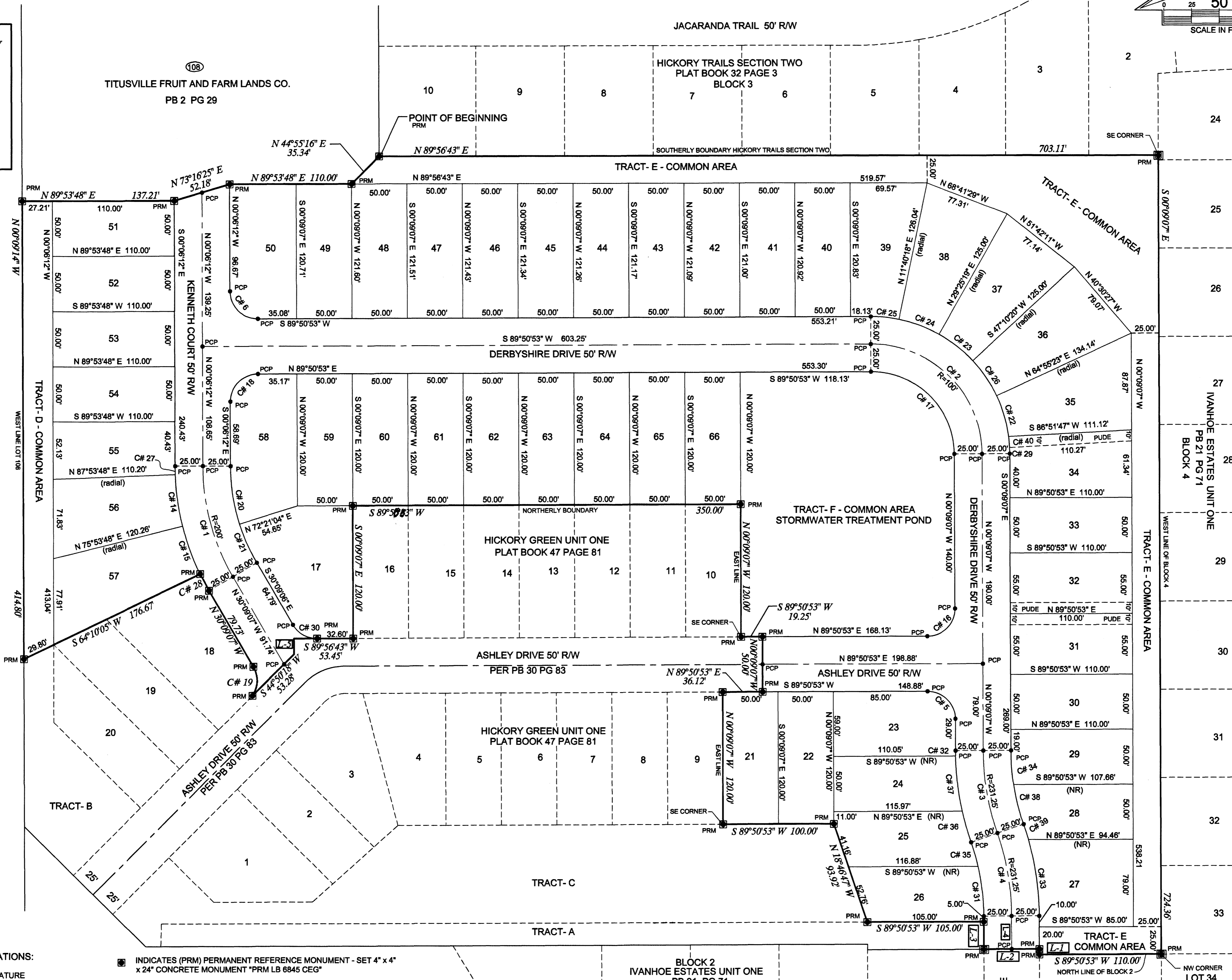
A RePlat of Lot 17, Hickory Green Unit One, as recorded in Plat Book 47 at Page 81 of the Public Records of Brevard County, Florida and a RePlat of a part of Lots 105, 106, 107, 108, 119 and 120 Titusville Fruit and Farm Lands Company Subdivision, lying in Section 20, Township 22 South, Range 35 East, as recorded in Plat Book 2, at Page 29 of the Public Records of Brevard County, Florida.



LINE TABLE

- L-1 N 00°09'07" W 5.00'
- L-2 S 89°50'53" W 50.00'
- L-3 N 00°09'07" W 25.00'
- L-4 N 00°09'07" W 30.00'
- L-5 S 00°05'39" E 14.16'

SEE SHEET 1 of 2 for CURVE TABLE



- LEGEND AND ABBREVIATIONS:
- PC POINT OF CURVATURE
 - PI POINT OF INTERSECTION
 - PT POINT OF TANGENCY
 - R RADIUS
 - D DELTA
 - L LENGTH
 - R/W RIGHT-OF-WAY
 - PUDE PUBLIC UTILITY & DRAINAGE EASEMENT
 - PB PLAT BOOK
 - PG PAGE
 - INDICATES (PRM) PERMANENT REFERENCE MONUMENT - SET 4" x 4" x 24" CONCRETE MONUMENT *PRM LB 6845 CEG*
 - INDICATES (PCP) PERMANENT CONTROL POINT - SET #4ReBar w/Cap or NAIL & DISC *PCP LB 6845 CEG*
 - FOUND CONCRETE MONUMENT *PLS 3072 PRM*
 - Titusville Fruit & Farm Land Co. Subdivision Lot Number
 - (NR) Non-Radial line
 - 56 Indicates Lot Number

prepared by:
Canaveral Engineering Group
SURVEYORS - MAPPERS - ENGINEERS - PLANNERS - CONSULTANTS
255 Pine Street / P.O. Box 6563 Titusville, FL 32782-6563
(V) 321-267-7241 (F) 321-267-3359 (E) ceg@cfl.mcg.com