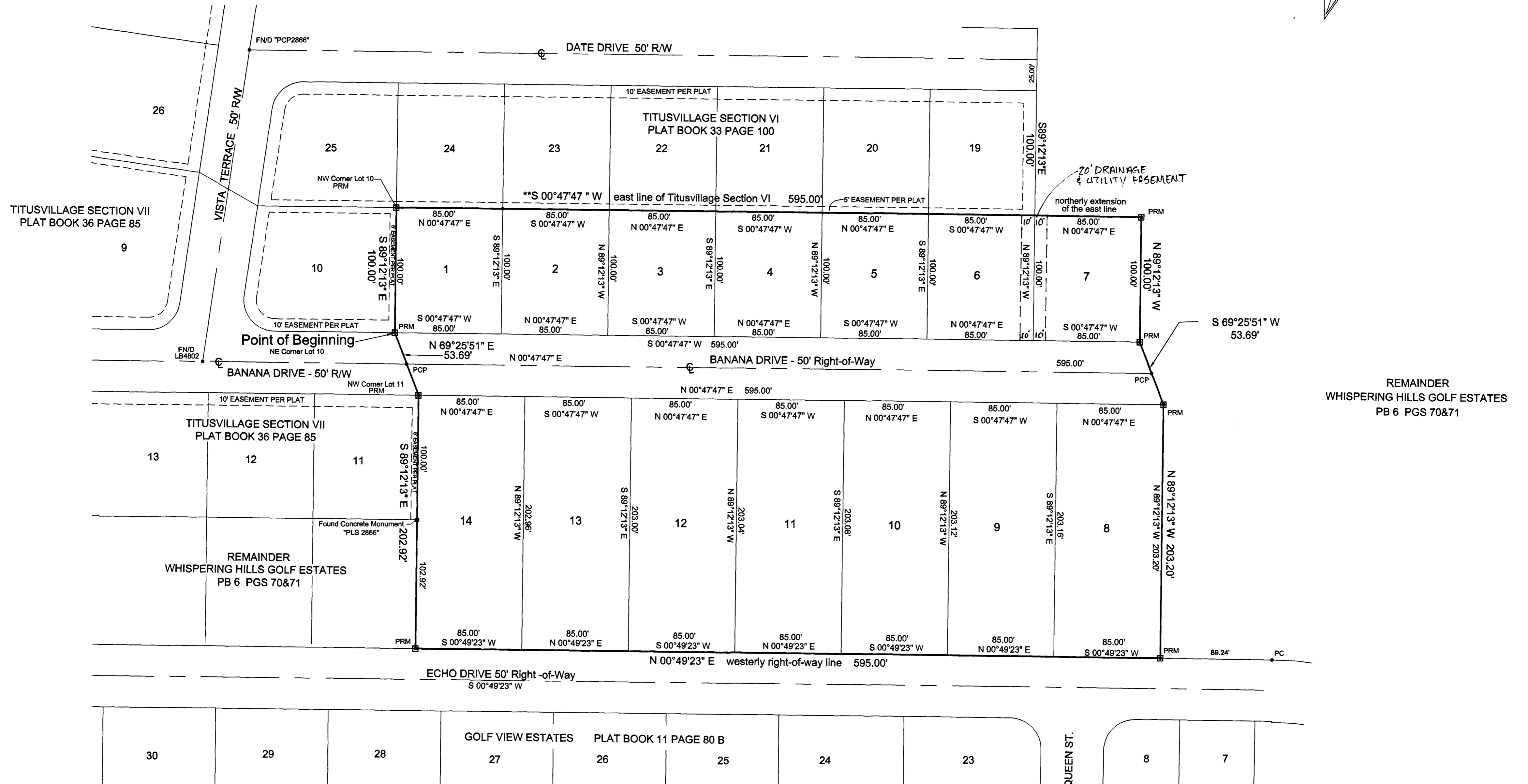
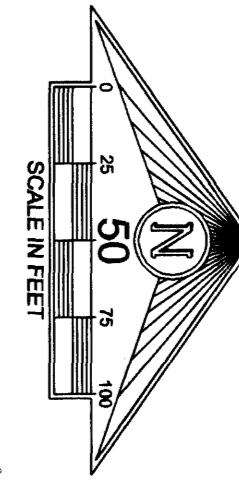


Titusvillage Section XI

City of Titusville, Brevard County, Florida

A Part of the Southeast 1/4 of the Northwest 1/4 of Section 9, Township 22 South, Range 35 East



LEGEND AND ABBREVIATIONS:

- | | | | |
|----|-----------------------|---|---|
| PC | POINT OF CURVATURE | N | NORTH |
| PI | POINT OF INTERSECTION | S | SOUTH |
| PT | POINT OF TANGENCY | E | EAST |
| R | RADIUS | W | WEST |
| D | DELTA | ◻ | INDICATES (PRM) PERMANENT REFERENCE MONUMENT
- SET 4" x 4" CONCRETE MONUMENT "PRM LB 6845 CEG"
(unless otherwise noted) |
| L | LENGTH | ○ | INDICATES (PCP) PERMANENT CONTROL POINT - SET
NAIL & DISC "PCP LB 6845 CEG" (unless otherwise noted) |
| PB | PLAT BOOK | | |

prepared by:
Canaveral Engineering Group
SURVEYORS - MAPPERS - ENGINEERS - PLANNERS - CONSULTANTS
355 Pine Street / P.O. Box 6563 Titusville, FL 32782-6563
(V) 407-267-7241 (F) 407-267-3359 (E) ceg@digital.net