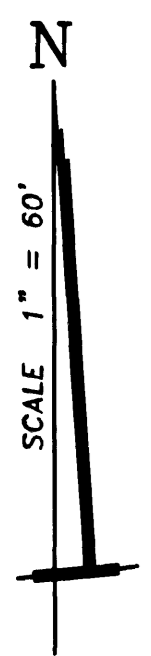
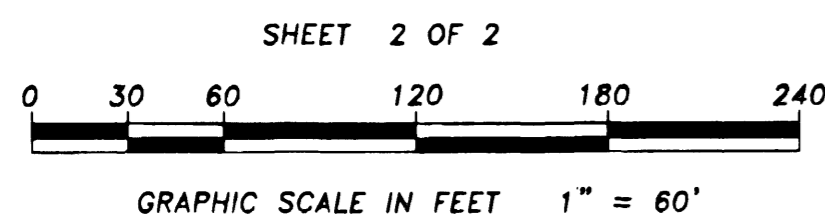


CHELSEA PARK UNIT 6

A SUBDIVISION OF A PORTION OF
 SECTION 22, TOWNSHIP 25 SOUTH, RANGE 36 EAST
 THE CITY OF ROCKLEDGE
 BREVARD COUNTY, FLORIDA

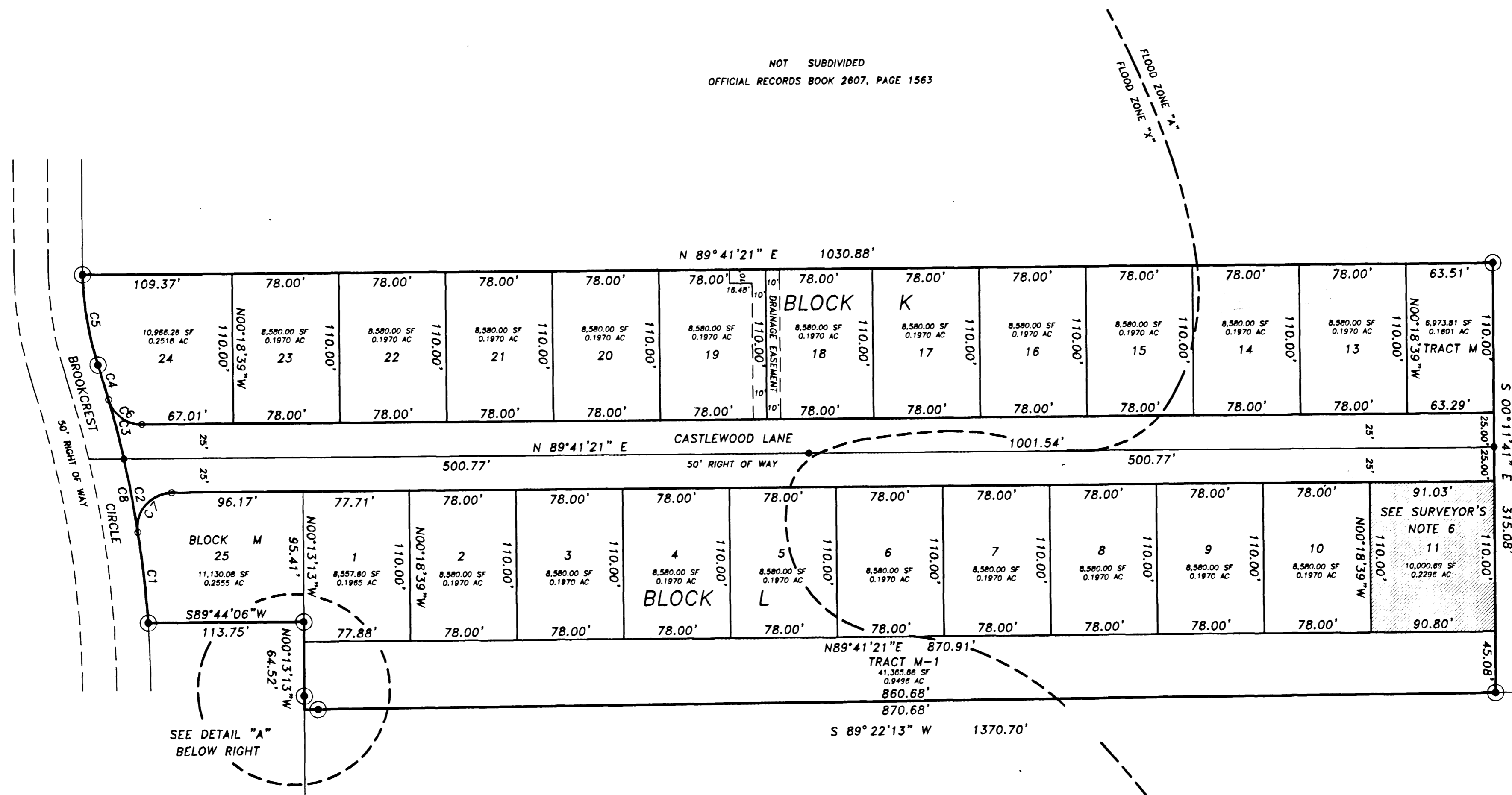
SCALE 1" = 60' OCTOBER 2001



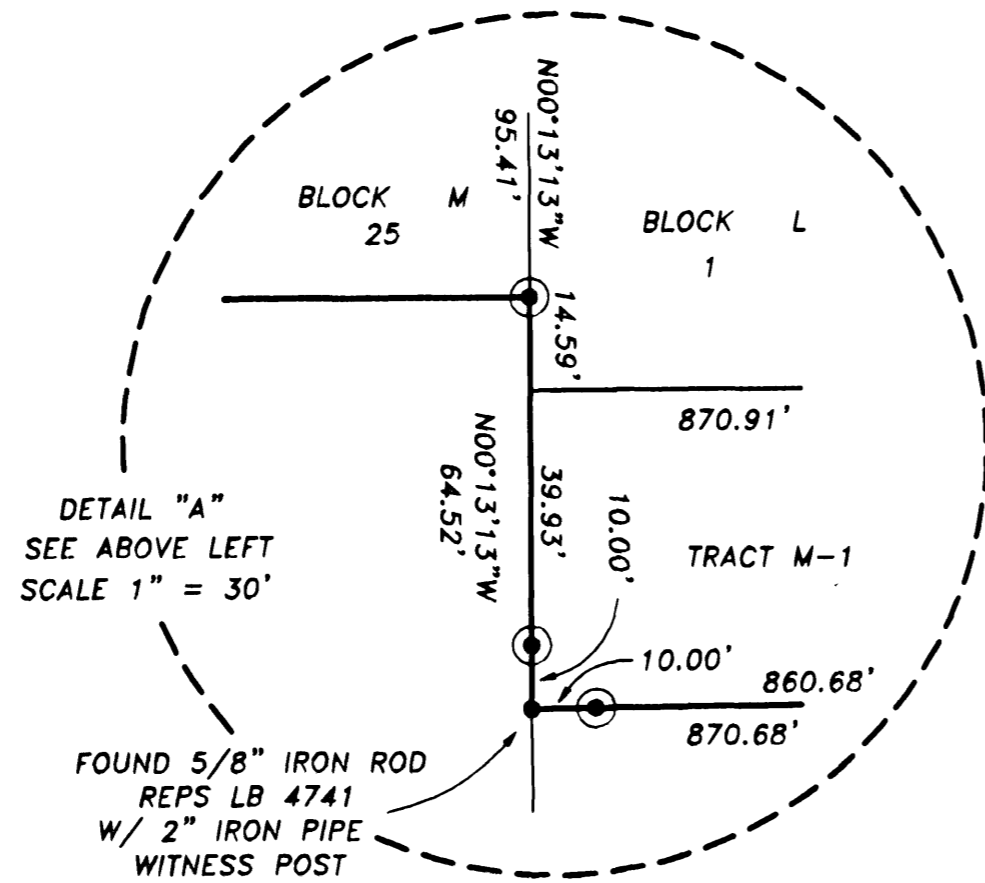
NOT SUBDIVIDED
 OFFICIAL RECORDS BOOK 2607, PAGE 1563

CHELSEA PARK UNIT 5
 PLAT BOOK 46, PAGES 93 & 94

NOT SUBDIVIDED
 OFFICIAL RECORDS BOOK 2607, PAGE 1563



NOT SUBDIVIDED
 OFFICIAL RECORDS BOOK 3454, PAGE 2477



CURVE TABLE					
CURVE	RADIUS	DELTA	ARC	CHORD	CHORD BRG
C1	790.00'	4°51'44"	67.04'	67.02'	N06°18'16"W
C2	790.00'	3°57'28"	54.57'	54.56'	N10°42'52"W
C3	790.00'	3°14'05"	44.60'	44.59'	N14°18'39"W
C4	790.00'	1°55'55"	26.64'	26.64'	N16°53'39"W
C5	230.00'	16°45'53"	67.30'	67.06'	N09°28'40"W
C6	25.00'	74°22'57"	32.46'	30.22'	N53°07'10"W
C7	25.00'	98°25'30"	42.95'	37.86'	N40°28'36"E
C8	790.00'	13°59'12"	192.85'	192.37'	N10°52'00"W

NOTICE:
 THERE MAY BE ADDITIONAL RESTRICTIONS THAT ARE NOT RECORDED ON THIS PLAT THAT MAY BE FOUND IN THE PUBLIC RECORDS OF THIS COUNTY.

NOTICE:
 THIS PLAT, AS RECORDED IN ITS GRAPHIC FORM, IS THE OFFICIAL DEPICTION OF THE SUBDIVIDED LANDS DESCRIBED HEREIN AND WILL IN NO CIRCUMSTANCES BE SUPPLANTED IN AUTHORITY BY ANY OTHER GRAPHIC OR DIGITAL FORM OF THE PLAT.