

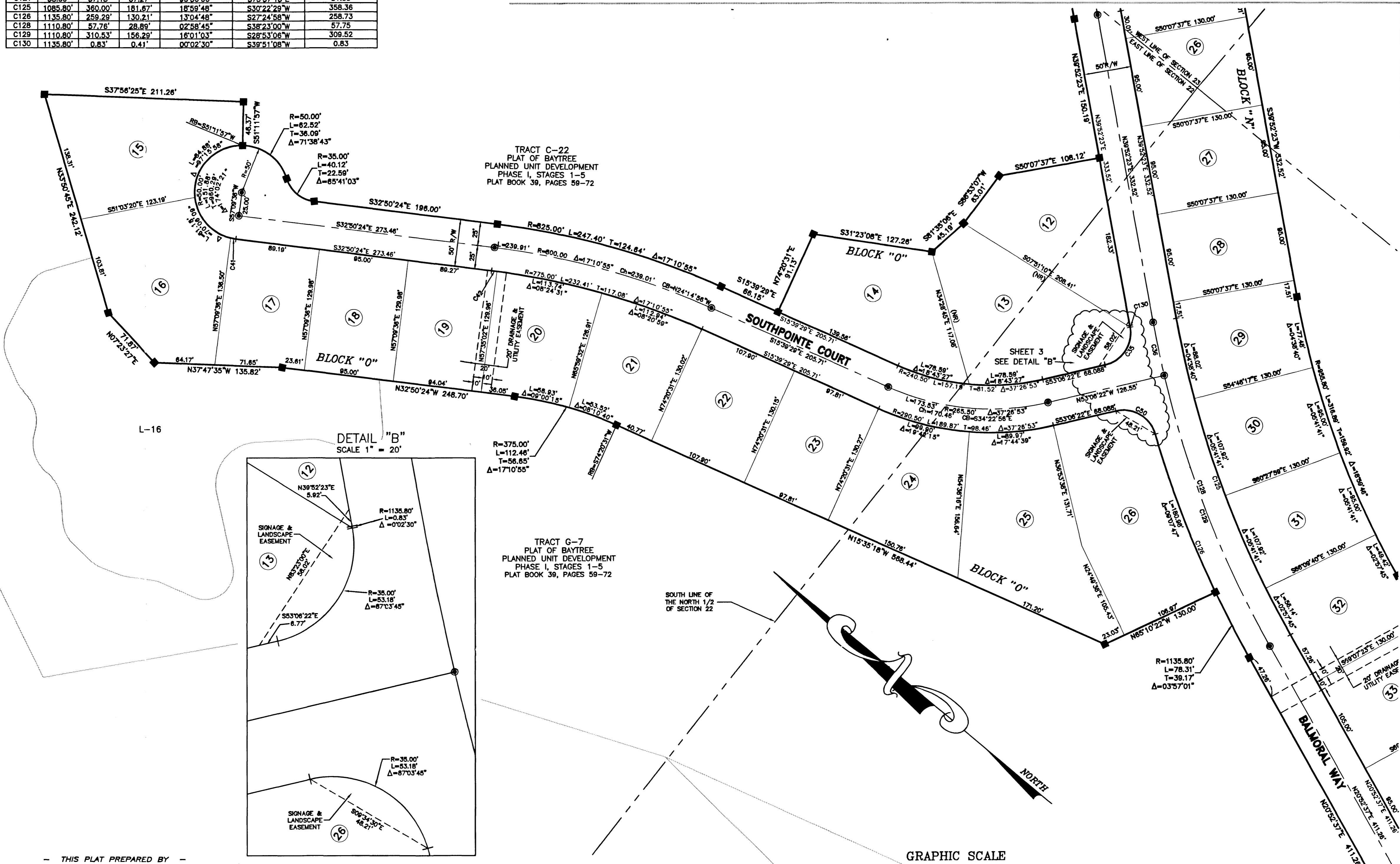
BALMORAL BAYTREE PLANNED UNIT DEVELOPMENT PHASE 3 - TRACT J

A REPLAT OF A PORTION OF TRACT F-6,
 PLAT OF BAYTREE PLANNED UNIT DEVELOPMENT
 PHASE 1, STAGES 1-5 AS RECORDED IN
 PLAT BOOK 39, PAGES 59-72.

SECTIONS 22 & 23
TOWNSHIP 26 SOUTH, RANGE 36 EAST
BREVARD COUNTY, FLORIDA

SEE SHEET 2

CURVE	RADIUS	LENGTH	TANGENT	CURVE TABLE	
				Delta	CHORD BEARING
C36	1110.80'	57.75'	28.89'	02°58'45"	S38°23'00"W
C41	50.00'	5.82'	2.91'	06°40'14"	S29°30'17"E
C42	775.00'	5.73'	2.87'	00°25'26"	N32°37'41"W
C50	35.00'	53.18'	33.25'	87°03'45"	N09°34'30"W
C52	150.00'	6.18'	3.08'	02°21'06"	S36°03'57"E
C75	35.00'	49.73'	30.11'	81°24'05"	S11°24'27"W
C77	361.06'	36.87'	18.45'	05°51'02"	N58°23'07"E
C83	361.06'	34.12'	17.07'	05°24'54"	N08°40'13"E
C85	50.00'	33.04'	17.15'	37°51'29"	N12°57'58"W
C90	35.00'	44.90'	28.14'	73°30'22"	N15°36'02"W
C93	311.06'	15.34'	7.67'	02°49'29"	N59°53'53"E
C95	35.00'	50.44'	30.73'	82°34'28"	S86°37'10"E
C96	35.00'	27.55'	14.53'	45°05'57"	N39°38'40"E
C98	35.00'	57.18'	37.27'	83°38'06"	S10°46'41"W
C100	50.00'	6.62'	3.31'	07°34'55"	S69°26'51"W
C102	50.00'	14.10'	7.10'	16°09'40"	S81°19'08"W
C103	35.00'	27.55'	14.53'	45°05'57"	S84°44'37"W
C112	180.00'	40.24'	20.20'	12°48'27"	S42°10'53"W
C113	35.00'	8.81'	4.43'	14°25'29"	N24°18'26"E
C114	2221.31'	44.77'	22.39'	01°09'17"	S61°51'15"W
C115	35.00'	16.74'	8.60'	30°40'28"	N46°51'24"E
C116	2221.31'	99.80'	49.91'	02°34'27"	S59°59'23"W
C118	2221.31'	12.38'	6.19'	00°19'09"	S58°32'35"W
C120	2025.00'	20.82'	10.41'	00°35'21"	S57°52'25"W
C121	35.00'	57.18'	37.27'	83°38'06"	S75°37'13"E
C125	1085.80'	380.00'	181.87'	18°59'48"	S30°22'29"W
C126	1135.80'	259.29'	130.21'	13°04'48"	S27°24'58"W
C128	1110.80'	57.75'	28.89'	02°58'45"	S38°23'00"W
C129	1110.80'	310.53'	156.29'	16°01'03"	S28°53'06"W
C130	1135.80'	0.83'	0.41'	00°02'30"	S39°51'08"W



SEE SHEET 4