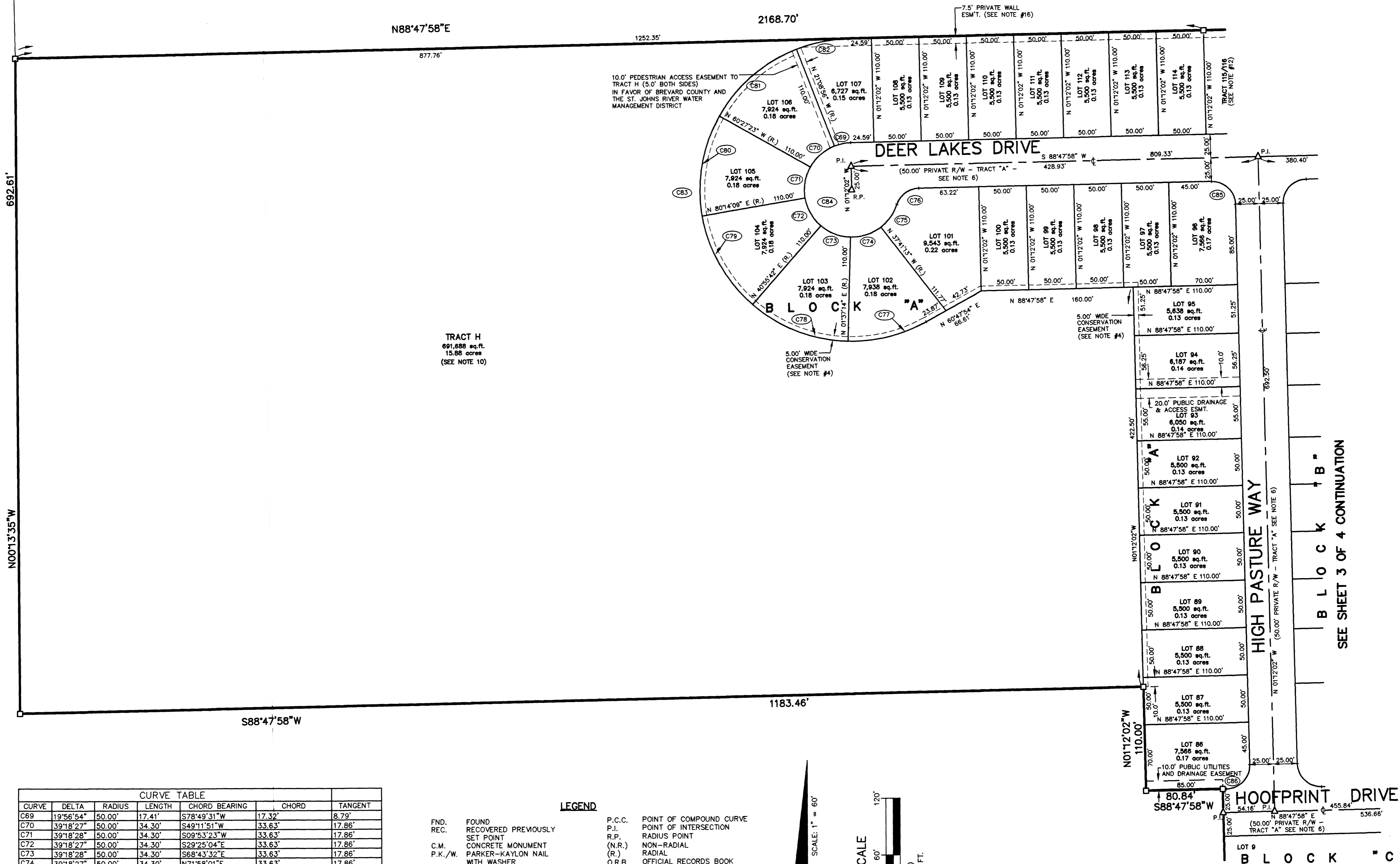


Deer Lakes Phase 1

A SUBDIVISION LYING IN SECTION 25, TOWNSHIP 26 SOUTH, RANGE 36 EAST, BREVARD COUNTY, FLORIDA.



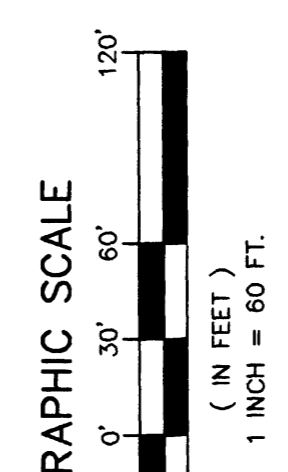
TRACT H
691,688 sq. ft.
15.68 acres
(SEE NOTE 10)

N00°13'35\"/>

692.61'

CURVE TABLE						
CURVE	DELTA	RADIUS	LENGTH	CHORD BEARING	CHORD	TANGENT
C69	19°56'54"	50.00'	17.41'	S78°49'31\"/>		

- LEGEND**
- FND. FOUND
 - REC. RECOVERED PREVIOUSLY
 - C.M. CONCRETE MONUMENT
 - P.K./W. PARKER-KAYLON NAIL WITH WASHER
 - P.R.M. PERMANENT REFERENCE MONUMENT
 - L.B. LAND SURVEYING BUSINESS NUMBER
 - R/W RIGHT OF WAY
 - P.B. PLAT BOOK
 - LS LAND SURVEYOR
 - P.C. POINT OF CURVE/ATURE
 - P.T. POINT OF TANGENCY
 - P.R.C. POINT OF REVERSE CURVE
 - P.C.C. POINT OF COMPOUND CURVE
 - P.I. POINT OF INTERSECTION
 - R.P. RADIUS POINT
 - (N.R.) NON-RADIAL
 - (R.) RADIAL
 - O.R.B. OFFICIAL RECORDS BOOK
 - P.G. PAGE
 - (TYP.) TYPICAL
 - (N.T.S.) NOT TO SCALE
 - N.I.C. NOT INCLUDED
 - LD LINE DATA (SEE LINE TABLE)
 - CD CURVE DATA (SEE CURVE TABLE)
 - ESM'T EASEMENT



Bussen-Mayer Engineering Group

100 PARNELL STREET • MERRITT ISLAND, FLORIDA 32953
PH. NO.: (321) 453-0010

SEE SHEET 3 OF 4 CONTINUATION

