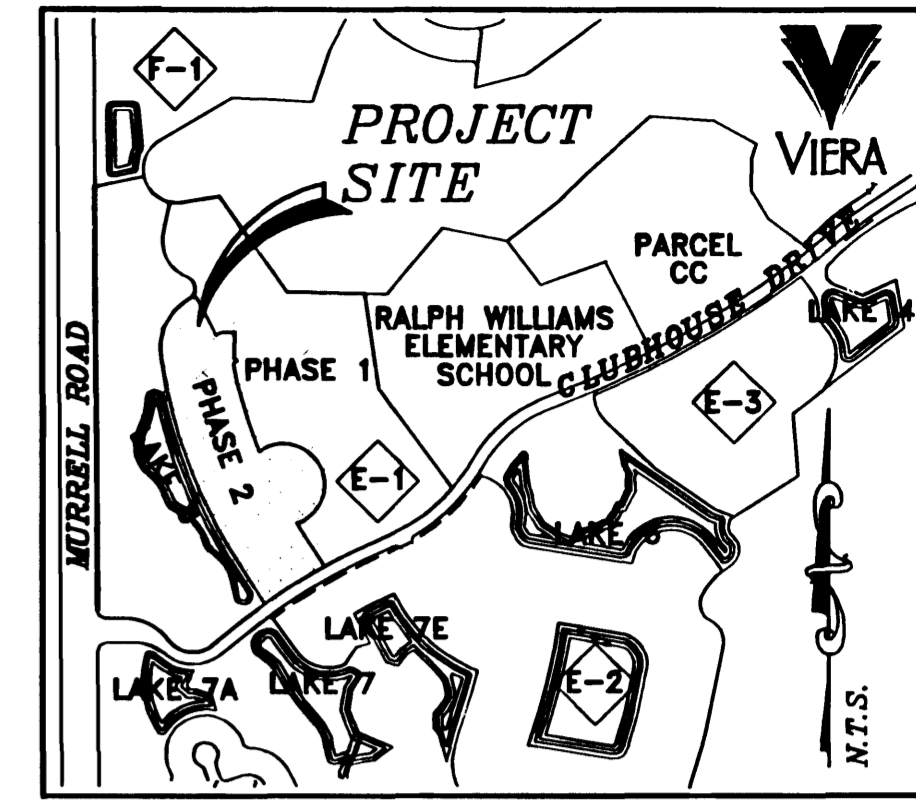
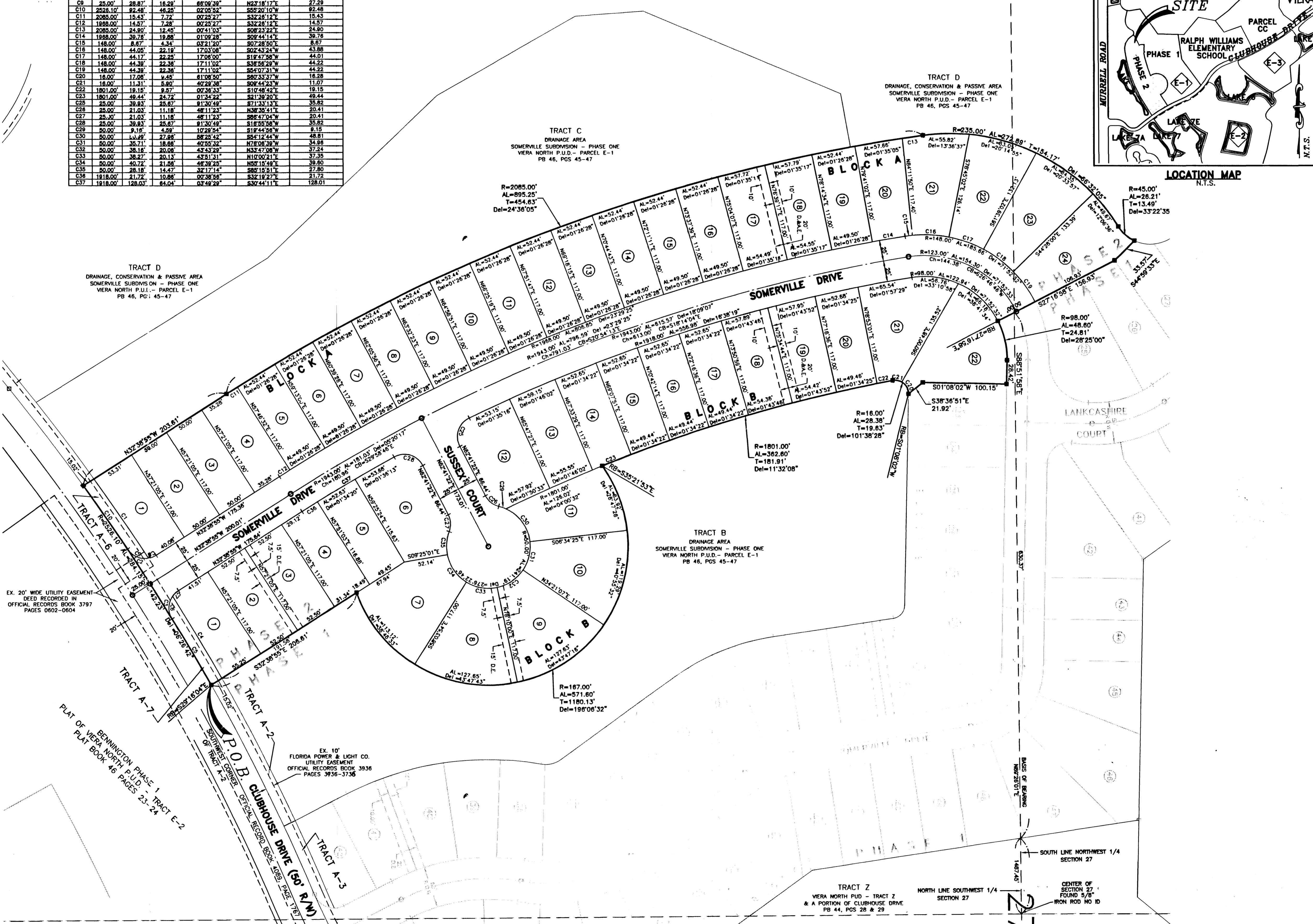


SOMERVILLE SUBDIVISION - PHASE TWO VIERA NORTH P.U.D. - PARCEL E-1 SECTION 27, TOWNSHIP 25 SOUTH, RANGE 36 EAST VIERA, BREVARD COUNTY, FLORIDA

CURVE	RADIUS	LENGTH	TANGENT	CHORD BEARING	CHORD
C1	2540.00'	115.10'	57.56'	S85°36'10"W	115.09
C2	25.00'	38.85'	24.58'	N11°52'08"E	35.06
C3	25.00'	38.71'	24.45'	S77°00'29"E	34.96
C4	2540.00'	115.17'	57.60'	S85°24'55"W	115.16
C5	2528.10'	92.84'	48.32'	S59°40'54"W	92.83
C6	25.00'	28.87'	18.28'	S88°17'14"E	27.29
C7	25.00'	9.84'	4.89'	S43°55'40"E	9.78
C8	25.00'	9.88'	5.06'	N21°12'44"W	9.91
C9	25.00'	28.87'	18.28'	N23°18'17"E	27.29
C10	2528.10'	92.48'	48.25'	S55°20'10"W	92.48
C11	2085.00'	15.43'	7.72'	S32°26'12"E	15.43
C12	1888.00'	14.57'	7.28'	S32°26'12"E	14.57
C13	2085.00'	24.80'	12.45'	S08°23'22"E	24.80
C14	1888.00'	39.78'	19.88'	S02°44'14"E	39.78
C15	148.00'	8.67'	4.34'	S07°28'50"E	8.67
C16	148.00'	44.05'	22.19'	S02°43'24"W	43.88
C17	148.00'	44.17'	22.25'	S19°47'58"W	44.01
C18	148.00'	44.39'	22.38'	S38°56'29"W	44.22
C19	148.00'	44.39'	22.38'	S49°07'31"W	44.22
C20	18.00'	17.08'	8.45'	S83°33'37"W	18.28
C21	18.00'	11.31'	5.90'	S09°44'23"W	11.07
C22	1801.00'	18.15'	9.07'	S10°48'42"E	18.15
C23	1801.00'	48.44'	24.72'	S21°38'20"E	48.44
C24	25.00'	39.63'	25.67'	S71°33'13"E	35.82
C25	25.00'	21.03'	11.18'	N38°36'41"E	20.41
C26	25.00'	21.03'	11.18'	S88°47'04"W	20.41
C27	25.00'	39.83'	25.87'	S18°50'49"E	35.82
C28	25.00'	39.83'	25.87'	S18°50'49"E	35.82
C29	50.00'	9.16'	4.59'	S19°44'58"W	8.15
C30	50.00'	14.89'	7.48'	S8°25'42"E	14.81
C31	50.00'	35.71'	18.68'	N78°08'39"W	34.96
C32	50.00'	38.18'	20.08'	N33°47'08"W	37.24
C33	50.00'	38.27'	20.13'	N10°00'21"E	37.35
C34	50.00'	40.72'	21.48'	N55°15'49"E	39.80
C35	50.00'	28.18'	14.47'	S88°15'51"E	27.80
C36	1818.00'	21.72'	10.86'	S32°19'27"E	21.72
C37	1818.00'	128.03'	64.04'	S30°44'11"E	128.01



LOCATION MAP
N.T.S.



TRACT D
DRAINAGE, CONSERVATION & PASSIVE AREA
SOMERVILLE SUBDIVISION - PHASE ONE
VIERA NORTH P.U.D. - PARCEL E-1
PB 46, PGS 45-47

TRACT C
DRAINAGE AREA
SOMERVILLE SUBDIVISION - PHASE ONE
VIERA NORTH P.U.D. - PARCEL E-1
PB 46, PGS 45-47

TRACT D
DRAINAGE, CONSERVATION & PASSIVE AREA
SOMERVILLE SUBDIVISION - PHASE ONE
VIERA NORTH P.U.D. - PARCEL E-1
PB 46, PGS 45-47

TRACT B
DRAINAGE AREA
SOMERVILLE SUBDIVISION - PHASE ONE
VIERA NORTH P.U.D. - PARCEL E-1
PB 46, PGS 45-47

TRACT Z
VIERA NORTH P.U.D. - TRACT Z
& A PORTION OF CLUBHOUSE DRIVE
PB 44, PGS 28 & 29

EX. 20' WIDE UTILITY EASEMENT
DEED RECORDED IN
OFFICIAL RECORDS BOOK 3797
PAGES 0602-0604

EX. 10' FLORIDA POWER & LIGHT CO.
UTILITY EASEMENT
OFFICIAL RECORDS BOOK 3936
PAGES 3936-3936

- THIS PLAT PREPARED BY -
B.S.E. CONSULTANTS, INC.
CONSULTING, ENGINEERING, LAND SURVEYING
312 S. Harbor City Blvd., Suite 4, Melbourne, Florida (321) 725-3674

