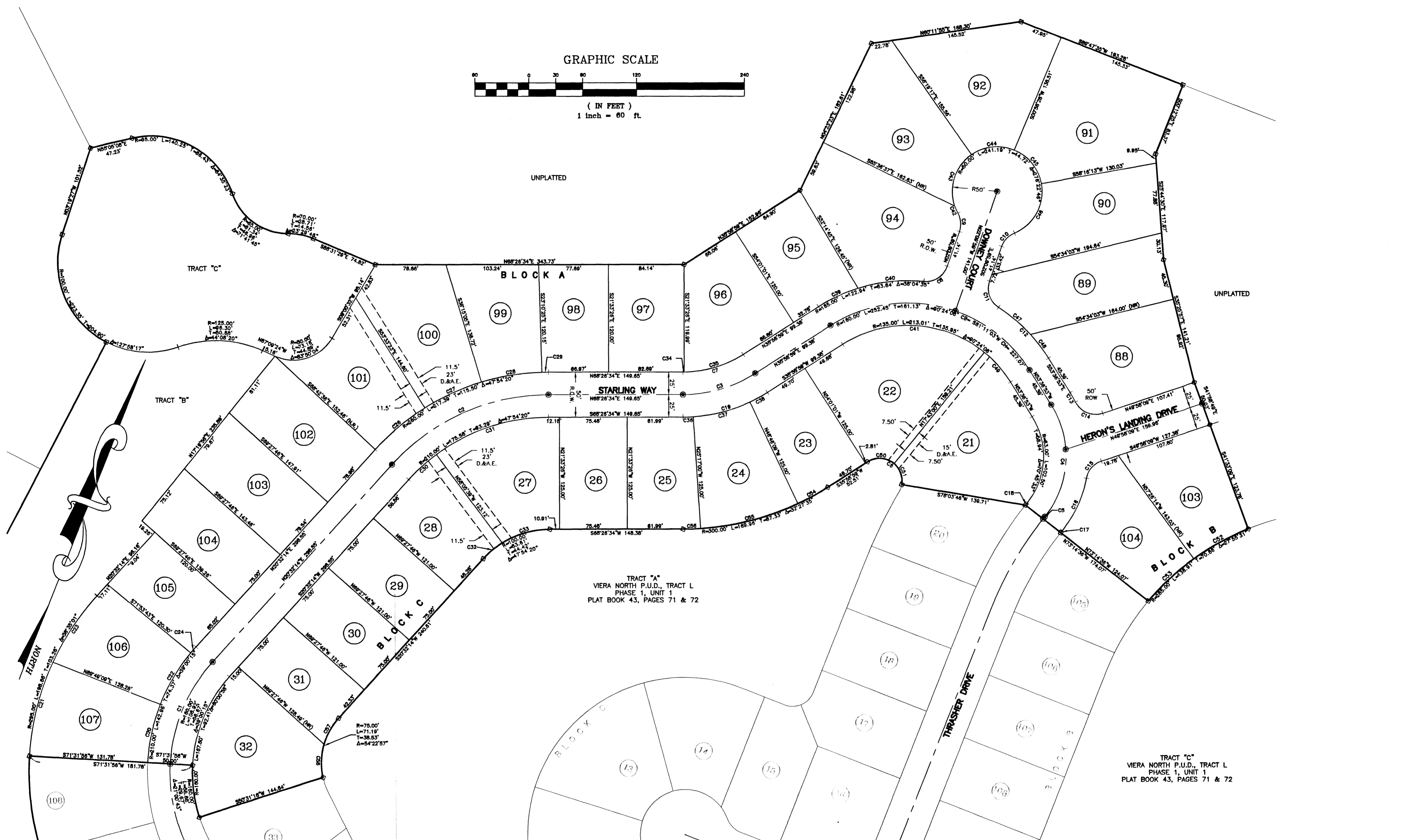
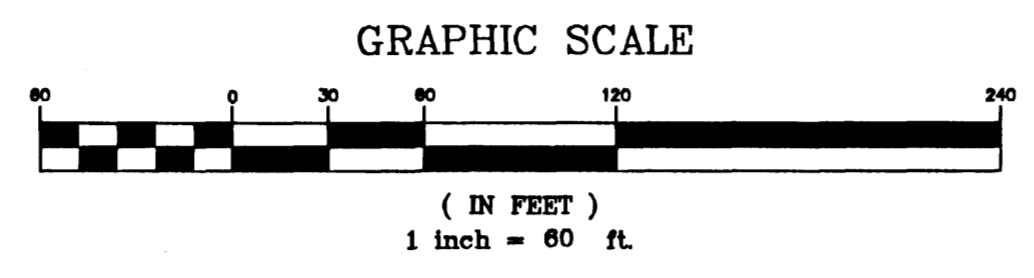


VIERA NORTH P.U.D., TRACT L, PHASE 2, UNIT 5  
 SECTION 34, TOWNSHIP 25 SOUTH, RANGE 36 EAST  
 VIERA, BREVARD COUNTY, FLORIDA



TRACT "A"  
 VIERA NORTH P.U.D., TRACT L  
 PHASE 1, UNIT 1  
 PLAT BOOK 43, PAGES 71 & 72

TRACT "C"  
 VIERA NORTH P.U.D., TRACT L  
 PHASE 1, UNIT 1  
 PLAT BOOK 43, PAGES 71 & 72

NOTE:  
 SEE SHEET 3 OF 3 FOR TRACTS A & B.

CURVE TABLE						CURVE TABLE						CURVE TABLE					
CURVE	LENGTH	RADIUS	CENTRAL ANGLE	CHORD	BEARING	CURVE	LENGTH	RADIUS	CENTRAL ANGLE	CHORD	BEARING	CURVE	LENGTH	RADIUS	CENTRAL ANGLE	CHORD	BEARING
C1	126.05	185.00	39°02'24"	123.63'	S01°01'03"W	C26	72.18	260.00	15°54'23"	71.95'	S28°29'26"W	C50	31.75	25.00	72°45'17"	29.66'	S72°21'37"W
C2	196.49	235.00	47°54'20"	190.81'	S44°29'24"W	C27	69.45	260.00	15°18'17"	69.24'	S44°05'46"W	C51	25.89	25.00	59°19'30"	24.74'	N41°35'59"W
C3	84.98	150.00	32°27'35"	83.85'	N52°12'46"E	C28	68.42	260.00	15°04'40"	68.22'	S59°17'15"W	C52	69.46	285.00	13°57'47"	69.28'	S39°22'05"W
C4	133.38	108.00	70°45'33"	125.06'	N18°14'07"W	C29	7.34	260.00	01°36'59"	7.34'	S67°38'04"W	C53	69.45	285.00	13°57'44"	69.28'	S25°24'19"W
C5	3.11	400.00	00°26'44"	3.11'	S16°55'17"W	C30	41.67	210.00	11°22'06"	41.60'	S28°13'17"W	C54	37.95	300.00	07°14'52"	37.92'	N39°36'25"E
C6	57.83	25.00	132°04'47"	45.69'	N77°58'38"W	C31	133.92	210.00	36°32'14"	131.66'	S50°10'27"W	C55	112.50	300.00	21°29'09"	111.84'	N53°58'25"E
C7	70.82	125.00	32°27'35"	69.87'	N52°12'46"E	C32	27.76	100.00	15°54'11"	27.67'	S28°29'20"W	C56	19.51	300.00	03°43'34"	19.51'	N66°34'47"E
C8	33.26	25.00	76°13'33"	30.86'	N35°56'47"E	C33	55.85	100.00	32°00'09"	55.13'	S52°26'30"W	C57	33.80	75.00	25°49'13"	33.51'	S07°37'38"W
C9	21.03	25.00	48°11'23"	20.41'	N26°15'40"W	C34	1.46	125.00	00°40'02"	1.46'	N68°06'33"E	C58	37.39	75.00	28°33'44"	37.00'	S19°33'51"E
C10	21.03	25.00	48°11'23"	20.41'	S21°55'42"W	C35	69.36	125.00	00°40'02"	68.47'	N51°52'48"E						
C11	33.26	25.00	76°13'33"	30.86'	S40°16'46"E	C36	11.38	175.00	03°43'34"	11.38'	N66°34'47"E						
C12	80.00	185.00	24°46'39"	79.38'	N66°00'13"W	C37	65.63	175.00	21°29'09"	65.24'	N53°58'25"E						
C13	12.01	133.00	05°10'22"	12.00'	N51°01'42"W	C38	22.14	175.00	07°14'52"	22.12'	N39°36'25"E						
C14	35.80	25.00	81°35'20"	32.67'	S89°14'11"E	C39	48.78	185.00	15°06'25"	48.64'	S43°32'11"W						
C15	26.56	25.00	60°52'49"	25.33'	S19°31'44"W	C40	74.17	185.00	22°58'10"	73.67'	S62°34'29"W						
C16	65.12	133.00	28°03'19"	64.48'	N03°07'00"E	C41	169.02	135.00	71°44'00"	158.19'	S71°50'59"W						
C17	2.94	375.00	00°26'58"	2.94'	S16°55'10"W	C42	8.70	50.00	09°58'03"	8.69'	S45°22'20"E						
C18	3.28	425.00	00°26'32"	3.28'	S16°55'23"W	C43	64.64	50.00	74°04'02"	60.23'	S03°21'18"E						
C19	99.14	175.00	32°27'35"	97.82'	N52°12'46"E	C44	50.00	50.00	57°17'45"	47.94'	S62°19'36"W						
C20	67.02	210.00	18°17'09"	66.74'	S09°19'26"E	C45	50.00	50.00	57°17'45"	47.94'	N60°22'40"W						
C21	108.73	295.00	21°07'04"	108.12'	S07°29'14"E	C46	67.85	50.00	77°45'11"	62.76'	N07°08'48"E						
C22	67.02	210.00	18°17'09"	66.74'	S08°57'43"W	C47	46.69	185.00	14°27'32"	46.56'	N71°09'46"W						
C23	89.93	295.00	17°27'57"	89.58'	S11°48'16"W	C48	33.32	185.00	10°19'07"	33.27'	N58°46'27"W						
C24	8.92	210.00	02°25'58"	8.92'	S19°19'16"W	C49	43.99	135.00	18°40'07"	43.79'	N62°58'57"W						

THIS PLAT PREPARED BY  
**B.S.E. CONSULTANTS, INC.**  
 CONSULTING, ENGINEERING, LAND SURVEYING  
 312 S. Harbor City Blvd., Suite 4, Melbourne, Florida (321) 725-3674