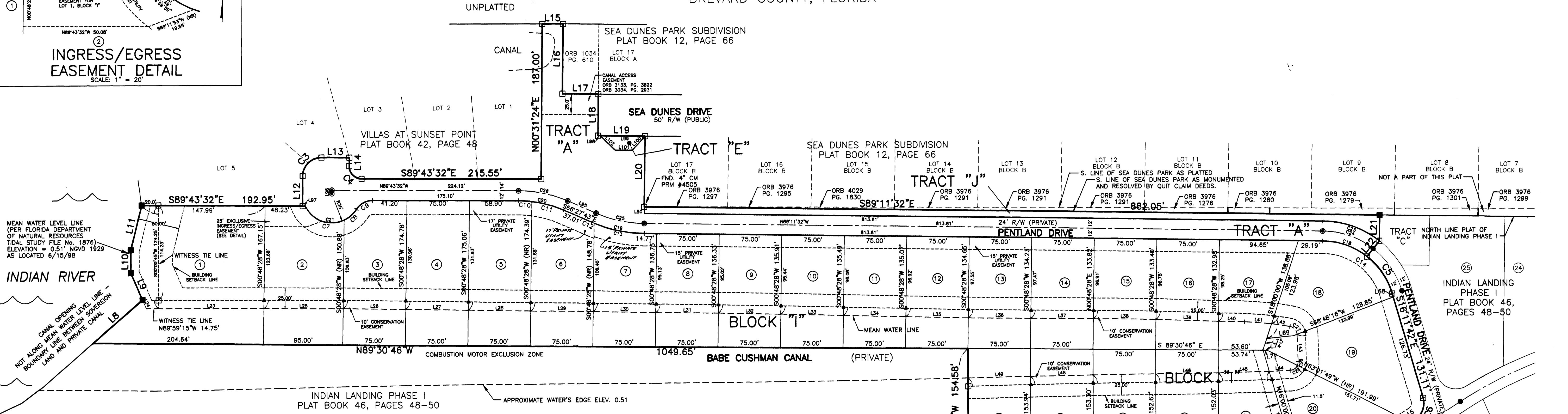
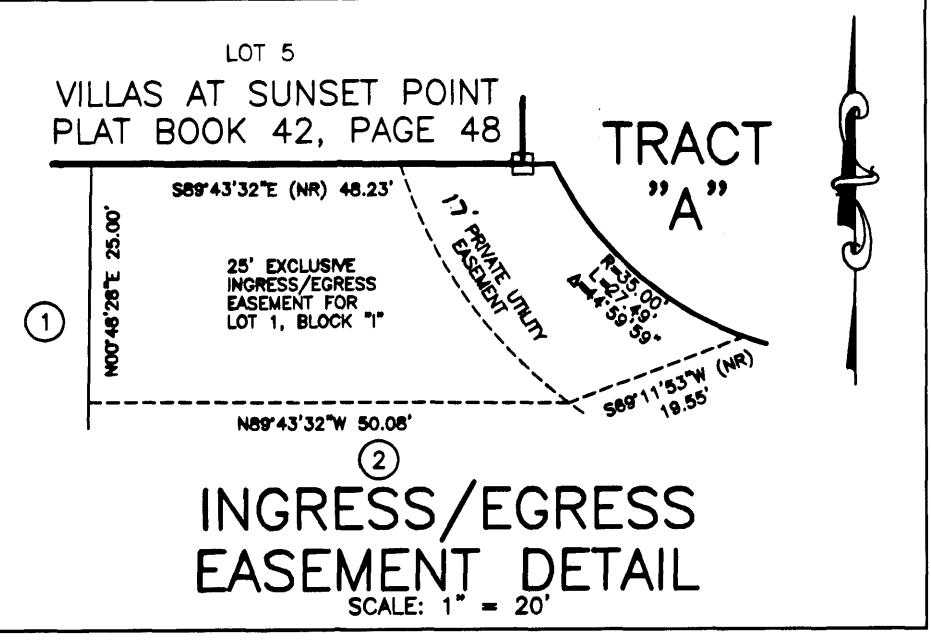


INDIAN LANDING PHASE II

A REPLAT OF TRACT "A" VILLAS AT SUNSET POINT (PLAT BOOK 42, PAGE 48) AND
 A REPLAT OF TRACTS "3A" AND "3B" INDIAN LANDING PHASE I (PLAT BOOK 46, PAGES 48-50)
 LYING IN SECTION 10, TOWNSHIP 29 SOUTH, RANGE 38 EAST,
 BREVARD COUNTY, FLORIDA



CURVE TABLE LEGEND

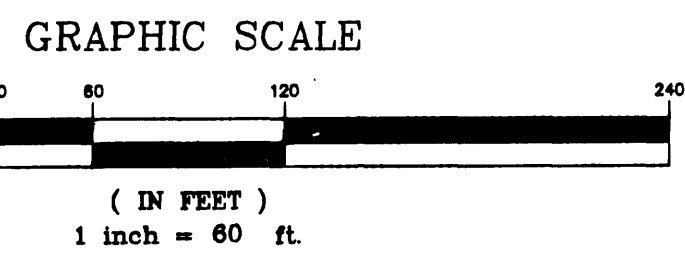
CURVE	RADIUS	DELTA	LENGTH	CHORD	CHORD BEARING
C1	23.00'	82°35'52"	33.16'	30.36'	N48°42'04"W
C2	47.00'	82°35'52"	67.76'	62.04'	S48°42'04"E
C3	22.27'	90°14'56"	35.08'	31.58'	S42°23'56"W
C4	15.00'	90°51'44"	23.79'	21.38'	S44°17'41"E
C5	86.00'	35°36'09"	54.88'	53.81'	S33°59'46"W
C6	23.00'	73°49'41"	29.84'	27.63'	N20°43'09"E
C7	35.00'	85°58'58"	54.98'	49.50'	S70°08'00"E
C8	35.00'	32°19'00"	19.74'	19.48'	N48°44'31"E
C9	23.00'	57°41'28"	23.16'	22.19'	S61°25'45"W
C10	138.00'	06°41'58"	16.14'	16.13'	N86°22'32"W
C11	138.00'	16°33'50"	39.80'	39.76'	N74°44'38"W
C12	162.00'	00°54'15"	2.56'	2.56'	S68°54'51"E
C13	162.00'	21°49'34"	81.71'	81.34'	S78°16'45"E
C14	88.00'	72°59'50"	112.12'	104.69'	N52°41'37"W
C15	438.00'	00°53'18"	6.79'	6.79'	N58°04'38"E
C16	438.00'	19°12'48"	146.87'	146.19'	N68°07'41"E
C17	438.00'	12°15'56"	93.76'	93.59'	N63°52'02"E
C18	88.00'	37°23'41"	87.43'	86.42'	N70°29'41"W
C19	162.00'	22°43'49"	64.27'	63.85'	S77°49'37"E
C20	138.00'	23°15'48"	56.03'	55.85'	N78°05'37"W
C21	35.00'	122°18'58"	74.72'	61.32'	S86°15'30"E
C22	112.00'	37°23'41"	73.10'	71.81'	N70°29'41"W
C23	100.00'	37°23'41"	65.27'	64.11'	N70°29'41"W
C24	150.00'	22°43'49"	59.51'	59.12'	S77°49'37"E
C25	150.00'	23°15'48"	60.80'	60.49'	N78°05'37"W
C26	10.00'	79°18'22"	13.84'	12.76'	N41°34'53"W
C27	10.00'	26°37'33"	4.65'	4.61'	N11°23'04"E
C28	10.00'	62°00'26"	10.82'	10.30'	N55°42'04"E

LINE TABLE LEGEND

LINE	BEARING	DISTANCE
L1	N00°31'56"E (NR)	19.19'
L2	N40°00'00"E	30.66'
L3	N59°20'47"E	51.47'
L4	N00°00'00"W	97.81'
L5	N80°00'00"E	27.58'
L6	N80°00'00"E	56.14'
L7	S00°00'00"W	107.56'
L8	N48°47'25"E	79.31'
L9	N2°25'17"W	25.25'
L10	N00°16'55"E	27.83'
L11	N13°46'55"E	55.32'
L12	S00°16'28"W	36.16'
L13	N89°28'38"W	33.51'
L14	S01°08'11"W	10.09'
L15	N89°43'32"W	25.00'
L16	N00°38'25"E	84.36'
L17	N89°30'30"W	43.00'
L18	N00°35'41"E	50.00'
L19	N89°12'34"W	56.50'
L20	N00°51'33"E	84.79'
L21	S00°48'28"W (NR)	31.02'
L22	S38°12'09"W	24.00'
L23	S89°59'15"E	126.27'
L24	N2°25'17"W	11.44'
L25	S89°51'35"E	85.01'
L26	S89°20'37"E	75.00'
L27	S88°58'52"E	75.00'
L28	S89°11'46"E	75.00'
L29	S89°15'35"E	75.00'
L30	S88°58'03"E	75.00'
L31	S89°16'28"E	75.00'
L32	S88°52'29"E	75.00'
L33	S88°42'03"E	75.00'
L34	S88°33'00"E	75.00'
L35	S88°42'35"E	75.00'

LINE TABLE LEGEND

LINE	BEARING	DISTANCE
L36	S89°15'27"E	75.00'
L37	S89°37'24"E	74.83'
L38	S89°17'29"E	75.17'
L39	S89°03'54"E	75.01'
L40	S88°45'33"E	31.27'
L41	S85°49'01"E	32.37'
L42	S81°14'04"E	107.56'
L43	S01°55'42"E	33.00'
L44	S86°42'17"W	25.25'
L45	S88°31'03"W	61.09'
L46	S89°14'13"W	75.01'
L47	S89°06'30"W	75.01'
L48	S88°49'13"W	75.01'
L49	S88°45'06"W	75.02'
L50	S02°08'05"E	8.01'
L51	N16°11'42"W	4.38'
L52	N84°09'19"E	32.02'
L53	S89°30'46"E	5.29'
L54	S18°00'00"W	14.90'
L55	S89°30'46"E	5.15'
L56	N80°00'00"W	1.28'
L57	S00°00'00"W	24.60'
L58	S00°00'00"W	2.96'
L59	N00°00'00"W	11.50'
L60	N66°27'43"W	37.01'
L61	S00°16'28"W	4.00'
L62	S89°43'32"E (NR)	3.27'
L63	S89°12'34"E	2.77'
L64	S89°12'34"E	53.73'
L65	S42°39'00"W	22.75'
L66	N80°00'00"W	20.20'
L67	N46°01'30"W	25.17'
L68	N90°00'00"E	17.75'
L69	S00°00'00"W	26.80'



- LEGEND**
- 4"x4" CONCRETE MONUMENT SET - STAMPED "POWHSOK PRM No. 5383"
 - NAIL AND DISK SET - STAMPED "POWHSOK PCP No. 5383"
 - 4"x4" CONCRETE MONUMENT FOUND - STAMPED "POWHSOK PRM No. 5383"
 - NAIL AND DISK FOUND - STAMPED "POWHSOK PCP No. 5383"
 - PERMANENT REFERENCE MONUMENT
 - PRM PAGE
 - CM CONCRETE MONUMENT
 - TWP. TOWNSHIP
 - R/W RIGHT-OF-WAY
 - ORB OFFICIAL RECORDS BOOK
 - D.E. DRAINAGE EASEMENT
 - U&DE UTILITY AND DRAINAGE EASEMENT
 - C CURVE CENTERLINE
 - R CURVE RADIUS
 - L CURVE LENGTH
 - NR NON-RADIAL
 - LB LICENSED BUSINESS
 - C CENTERLINE
 - ▲ NAIL & DISK SET - STAMPED "POWHSOK PLS No. 5383"
 - NOTE: ALL LINES ARE RADIAL UNLESS OTHERWISE NOTED.

SOUTH SHORES PHASE II
 PLAT BOOK 43, PAGES 42 - 46

NOTICE: THIS PLAT, AS RECORDED IN ITS GRAPHIC FORM, IS THE OFFICIAL DEPICTION OF THE SUBDIVIDED LANDS DESCRIBED HEREIN AND WILL IN NO CIRCUMSTANCES BE SUPPLANTED IN AUTHORITY BY ANY OTHER GRAPHIC OR DIGITAL FORM OF THE PLAT. THERE MAY BE ADDITIONAL RESTRICTIONS THAT ARE NOT RECORDED ON THIS PLAT THAT MAY BE FOUND IN THE PUBLIC RECORDS OF THIS COUNTY.

UTILITY AND DRAINAGE EASEMENTS AS SHOWN ARE PRIVATE.

