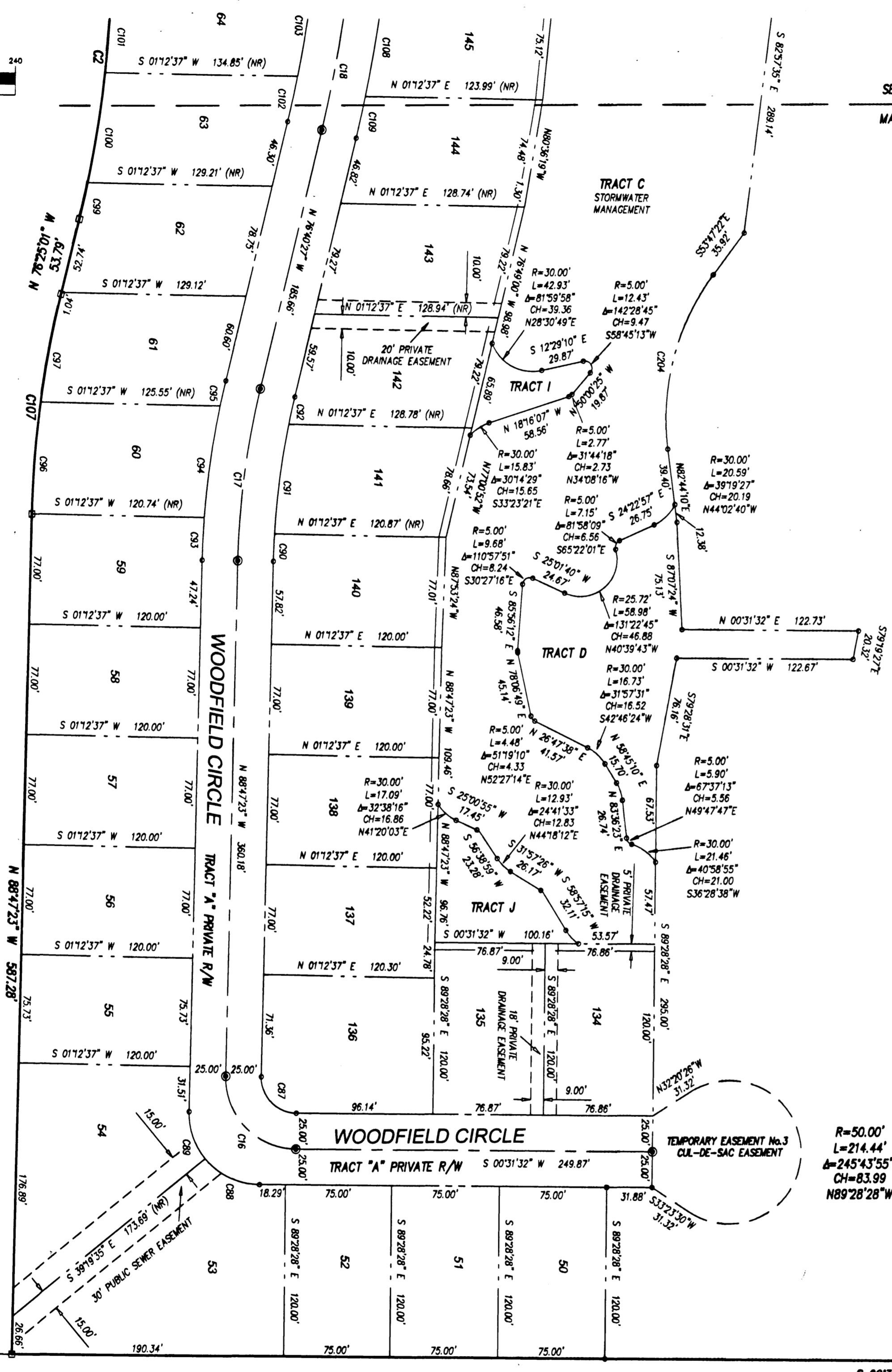
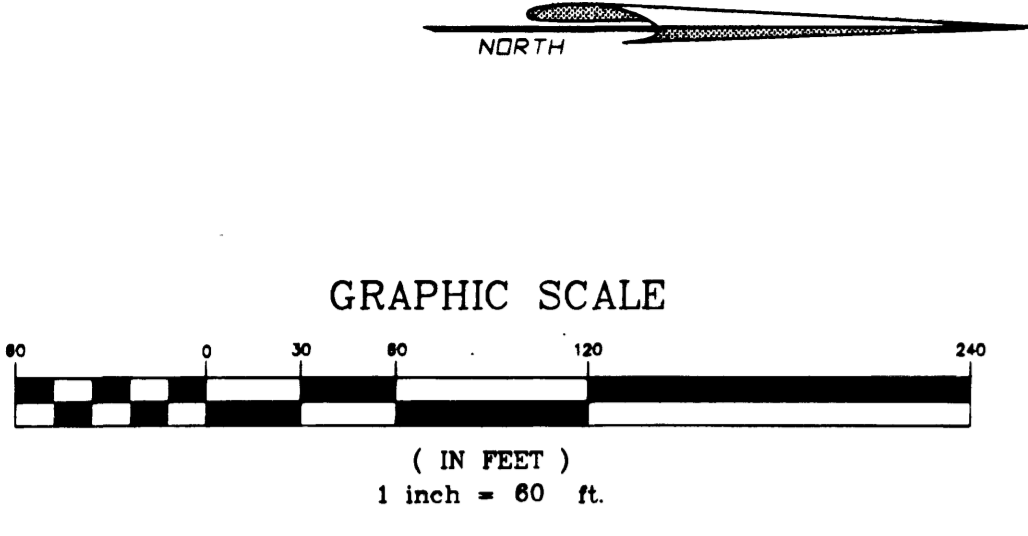


WOODFIELD AT HERITAGE OAKS PHASE 1

A SUBDIVISION LYING IN SECTION 7, TOWNSHIP 28 SOUTH, RANGE 37 EAST
 IN THE CITY OF WEST MELBOURNE, BREVARD COUNTY, FLORIDA



SEE SHEET 2
 MATCH LINE

TRACT No. 1
 RESERVED FOR FUTURE DEVELOPMENT

- LEGEND**
- = FOUND P.R.M. (PERMANENT REFERENCE MONUMENT)
 4"x4" CONCRETE MONUMENT STAMPED PRM PLS 5363
 - = SET P.R.M. (PERMANENT REFERENCE MONUMENT)
 4"x4" CONCRETE MONUMENT STAMPED PRM PLS 5363
 - = P.C.P. (PERMANENT CONTROL POINT)
 NAIL & DISK STAMPED PCP PLS 5363
 - = DENOTES CHANGE IN DIRECTION
 (FOR CLARITY PURPOSES ONLY)
 - POB = POINT OF BEGINNING
 - POC = POINT OF COMMENCEMENT
 - ORB = OFFICIAL RECORDS BOOK
 - PG = PAGE
 - SEC = SECTION
 - TWP = TOWNSHIP
 - RGE = RANGE
 - CMF = CONCRETE MONUMENT FOUND
 - COR = CORNER
 - IPF = IRON PIPE FOUND
 - PB = PLAT BOOK
 - PG = PAGE
 - NR = NON RADIAL

CURVE	RADIUS	DELTA	ARC	CHORD	BEARING
C2	780.00'	12°22'22"	168.44'	168.11'	N82°36'12"W
C16	50.00'	90°41'05"	79.14'	71.13'	N45°52'04"E
C17	575.00'	12°06'57"	121.59'	121.36'	S82°43'55"E
C18	925.00'	12°06'56"	195.60'	195.23'	N82°43'55"W
C87	25.00'	90°41'05"	39.57'	35.52'	N45°52'04"E
C88	50.00'	50°08'53"	43.76'	42.38'	N25°35'59"E
C89	50.00'	40°32'12"	35.37'	34.64'	N70°56'31"E
C90	550.00'	1°59'56"	19.19'	19.19'	S87°47'25"E
C91	550.00'	8°04'22"	77.49'	77.43'	S82°45'16"E
C92	550.00'	2°02'38"	19.62'	19.62'	S77°41'46"E
C93	800.00'	2°50'34"	29.77'	29.77'	S82°22'06"E
C94	800.00'	7°32'41"	79.01'	78.95'	S82°10'28"E
C95	800.00'	1°43'41"	18.10'	18.09'	S77°32'17"E
C96	720.18'	6°15'06"	78.58'	78.54'	S85°40'00"E
C97	720.61'	6°07'29"	77.03'	76.99'	S79°28'46"E
C99	780.00'	1°54'35"	26.00'	26.00'	N77°22'19"W
C100	780.00'	5°42'31"	77.72'	77.68'	N81°10'52"W
C101	780.00'	4°45'16"	64.72'	64.70'	N88°24'45"W
C102	800.00'	2°03'51"	32.34'	32.34'	N77°42'12"W
C103	900.00'	4°56'48"	77.70'	77.68'	N81°12'22"W
C107	720.61'	12°22'22"	155.61'	155.31'	S82°36'12"E
C108	950.00'	4°34'10"	75.76'	75.74'	N80°45'21"W
C109	950.00'	1°47'50"	29.80'	29.80'	N77°34'21"W
C204	170.00'	43°28'29"	128.99'	125.92'	S75°31'36"E

HENRY AVENUE
 ORB. 7451, PAGE 27
 PUBLIC R/W

POB
 NO. 1
 NORTHEAST CORNER OF
 SECTION 7

"NOTICE: This plat, as recorded in its graphic form, is the official depiction of the subdivided lands described herein and will in no circumstances be supplanted in authority by any other graphic or digital form of the plat. There may be additional restrictions that are not recorded on this plat that may be found in the public records of this county."