

CHELSEA PARK UNIT 5

A SUBDIVISION OF A PORTION OF
SECTION 22, TOWNSHIP 25 SOUTH, RANGE 36 EAST
AND
A RESUBDIVISION OF A PORTION OF
TRACT 5, CHELSEA PARK UNIT 1
PLAT BOOK 41 AT PAGES 58 THROUGH 60

THE CITY OF ROCKLEDGE
BREVARD COUNTY, FLORIDA

CURVE	RADIUS	DELTA	ARC	CHORD	CHORD BRG
E2	475.00'	17°34'57"	151.90'	145.19'	N09°03'23"W
E4	175.00'	18°19'22"	55.96'	234.00'	S09°03'45"E

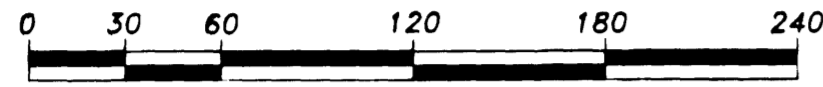
LINE	BEARING	DISTANCE
E1	N00°15'54"W	98.96'
E3	N17°50'51"W	194.03'
E5	N00°28'31"E	31.52'

LINE	BEARING	DISTANCE
F1	N00°15'54"W	77.99'
F2	S88°38'58"E	540.02'
F3	S00°14'54"E	79.45'
F4	N88°29'40"W	540.04'

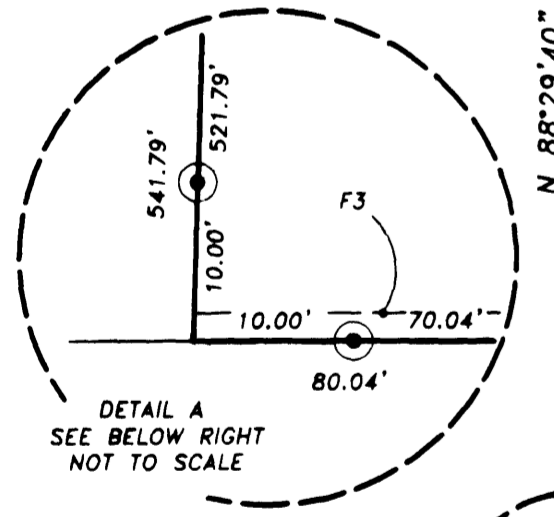
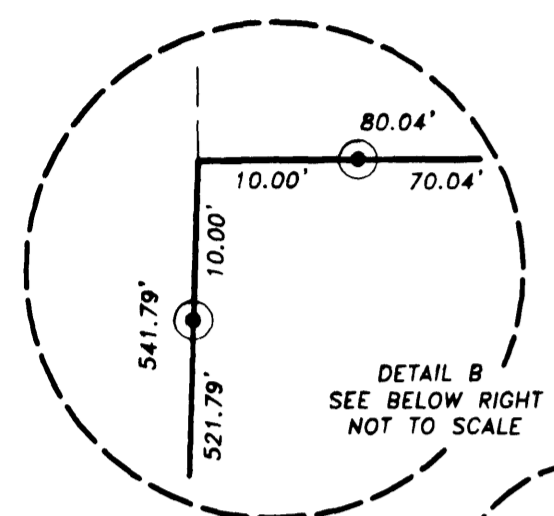
SCALE 1" = 60'

MARCH 2001

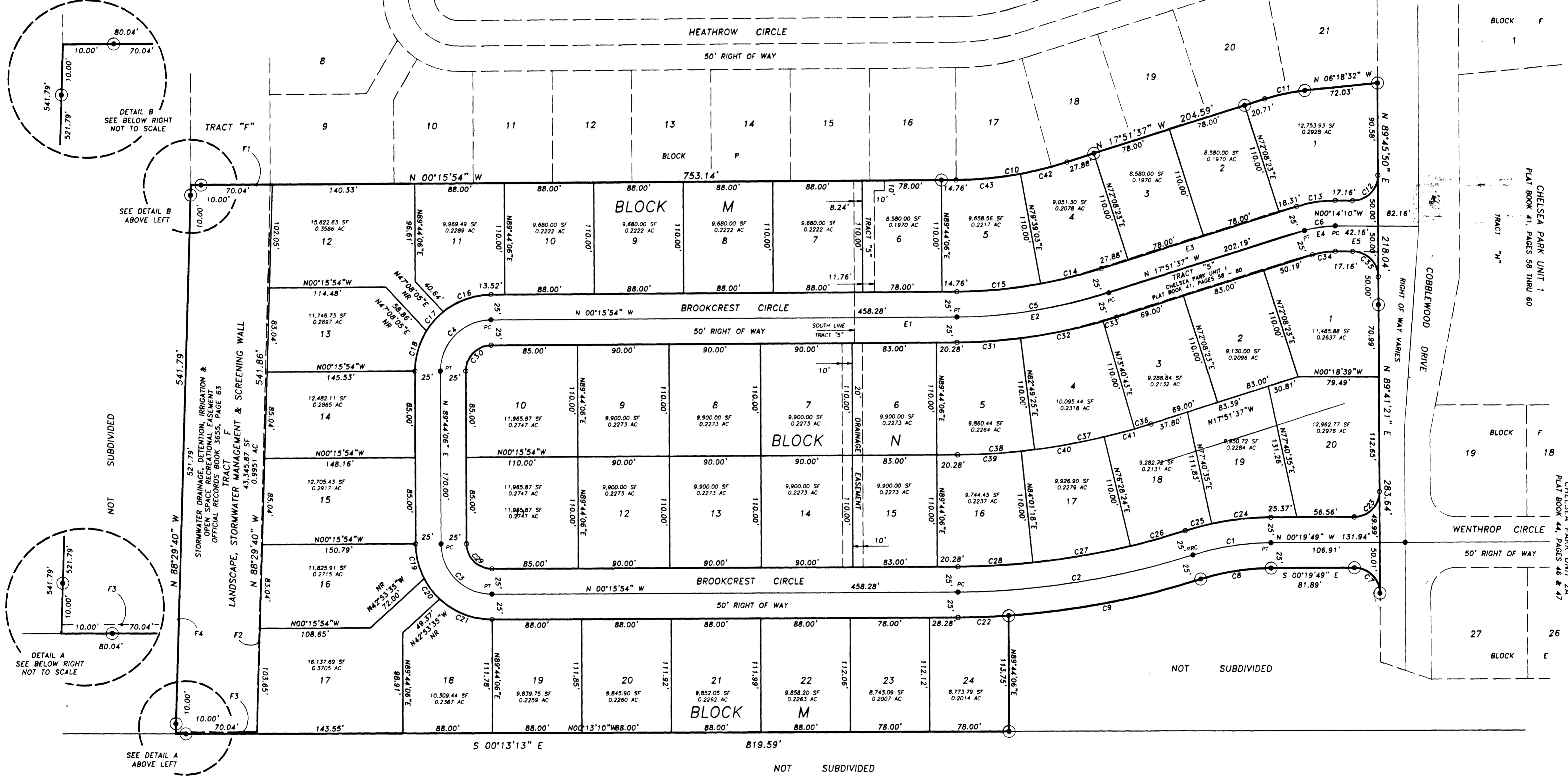
SHEET 2 OF 2



GRAPHIC SCALE IN FEET 1" = 60'



CHELSEA PARK UNIT 1
PLAT BOOK 41, PAGES 58 THRU 60



CURVE	RADIUS	DELTA	ARC	CHORD	CHORD BRG
C1	255.00'	17°31'47"	78.02'	77.71'	S09°05'43"E
C2	765.00'	17°35'43"	234.93'	234.00'	S09°03'45"E
C3	50.00'	90°00'00"	78.54'	70.71'	N44°44'06"E
C4	50.00'	90°00'00"	78.54'	70.71'	S45°15'54"E
C5	495.00'	17°35'43"	152.01'	151.42'	S09°03'45"E
C6	100.00'	17°37'27"	30.76'	30.64'	S09°02'53"E
C7	25.00'	90°01'10"	39.28'	35.36'	S44°40'46"W
C8	230.00'	17°31'47"	70.37'	70.10'	S09°05'43"E
C9	790.00'	13°59'12"	192.85'	192.37'	S10°52'00"E
C10	360.00'	17°35'43"	110.56'	110.12'	N09°03'45"W
C11	200.00'	11°33'05"	40.32'	40.25'	N12°05'05"W

CURVE	RADIUS	DELTA	ARC	CHORD	CHORD BRG
C12	25.00'	90°00'00"	39.27'	35.36'	S45°14'10"E
C13	125.00'	17°37'27"	38.45'	38.30'	S09°02'53"E
C14	470.00'	7°30'40"	61.61'	61.57'	S14°06'17"E
C15	470.00'	10°05'03"	82.72'	82.61'	S05°18'25"E
C16	75.00'	38°46'40"	50.76'	49.80'	S19°39'14"E
C17	75.00'	19°17'19"	25.25'	25.13'	S48°41'13"E
C18	75.00'	31°56'01"	41.80'	41.26'	N74°17'53"E
C19	75.00'	27°09'44"	35.56'	35.22'	N78°09'15"E
C20	75.00'	19°17'19"	25.25'	25.13'	N52°55'43"E
C21	75.00'	43°32'57"	57.01'	55.64'	N21°30'35"E
C22	790.00'	3°36'31"	49.75'	49.74'	S02°04'09"E

CURVE	RADIUS	DELTA	ARC	CHORD	CHORD BRG
C23	25.00'	89°58'50"	39.26'	35.35'	S45°19'14"E
C24	280.00'	11°59'36"	58.61'	58.50'	S06°19'37"E
C25	280.00'	5°32'11"	27.06'	27.05'	S15°05'31"E
C26	740.00'	4°20'01"	55.97'	55.96'	S15°41'36"E
C27	740.00'	7°32'54"	97.49'	97.42'	S09°45'09"E
C28	740.00'	5°42'48"	73.79'	73.76'	S03°07'18"E
C29	25.00'	90°00'00"	39.27'	35.36'	N44°44'06"E
C30	25.00'	90°00'00"	39.27'	35.36'	S45°15'54"E
C31	520.00'	6°54'41"	62.73'	62.69'	S03°43'14"E
C32	520.00'	9°08'42"	83.00'	82.91'	S11°44'56"E
C33	520.00'	1°32'20"	13.97'	13.97'	S17°05'27"E

CURVE	RADIUS	DELTA	ARC	CHORD	CHORD BRG
C34	75.00'	17°37'27"	23.07'	22.98'	S09°02'53"E
C35	25.00'	90°00'00"	39.27'	35.36'	N44°45'50"E
C36	630.00'	1°32'20"	16.92'	16.92'	S17°05'27"E
C37	630.00'	9°08'42"	100.56'	100.45'	S11°44'56"E
C38	630.00'	6°54'41"	75.99'	75.95'	S03°43'14"E
C39	630.00'	5°42'48"	62.82'	62.80'	S03°07'18"E
C40	630.00'	7°32'54"	83.00'	82.94'	S09°45'09"E
C41	630.00'	4°20'01"	47.65'	47.64'	S15°41'36"E
C42	360.00'	7°30'40"	47.19'	47.16'	N14°06'17"W
C43	360.00'	10°05'03"	63.36'	63.28'	N05°18'26"W